



safety glazing certification council

P.O. BOX 730
SACKETS HARBOR, N. Y. 13685
PHONE 315-646-2234
FAX 315-646-2297

MINUTES OF EIGHTY-NINTH MEETING OF THE CERTIFICATION COMMITTEE OCTOBER 13th and 14th, 2016 SHERATON TORONTO AIRPORT TORONTO, ON

		Date and Votes Present	
		<u>10/13/16</u>	<u>10/14/16</u>
<u>Members and Alternates Present</u>			
AGC Fab.	Mark Cody	1	1
AGC Industries	Mark Cody	1	1
Cardinal Glass	Bernie Herron	1	1
Consolidated Glass	Shane Merryman	1	1
Guardian Fabrication Inc.	Wayne Griffin	1	1
Guardian Industries Corp.	Wayne Griffin	1	1
Intigral	Ed Hetrick	1	1
Oldcastle Building Envelope	Rick Wright	1	1
Standard Bent Glass	Tim Moore	1	1
Trulite	Jeff Haberer	1	1
Trulite	Ray Wakefield	Present	Absent
Viracon	Brian Louks	1	1
<u>Members by Virtue of Being a Director</u>			
Public Interest	Patrick Loughran	1	Absent
Public Interest	Elaine Rodman	1	1
Public Interest	Peter Weismantle	1	1
Public Interest	Bill Nugent	1	1
		<hr/>	<hr/>
		Votes	
		15	14
<u>Guests</u>			
Optigas	Ryan McHugh	Present	Absent
<u>Legal Counsel</u>			
Schiff, Hardin LLP	William M. Hannay	Present	Present
<u>Administrative Staff</u>			
AMS, Inc.	John Kent	Present	Present
AMS, Inc.	Katrina Stafford	Present	Present
		<hr/>	<hr/>
Persons Present		18	15

10.13.16.1 The meeting was called to order at 1:07pm by Chairman Mark Cody and a quorum declared. All present introduced themselves. Voting rights and responsibilities were reviewed.

10.13.16.2 A presentation was provided by Ryan McHugh of Optigas entitled "Vision Systems for Fragmentation Analysis". Upon completion, time was allowed for questions. All thanked Mr. McHugh.

10.13.16.3 The minutes of the November 3 and 4, 2015 meeting were reviewed. A motion was made by Haberer/Weismantle to approve the minutes as submitted.

Vote: 14 Affirmative
1 Abstain
Motion Passed

10.13.16.4 **Legal Counsel's Report – W. Hannay - (See attachment #1).**

- A. SGCC Anti-Trust Guidelines were distributed to the group and read out loud
- B. SGCC, a corporation incorporated under the Illinois General Not for Profit Corporation Act, is in good legal standing in the State of Illinois with no pending or threatened litigation.

10.13.16.5 **Committee Structure - (See Attachment #2)**

The attachment shows results of committee and sub-committee membership at the conclusion of the meeting.

10.13.16.6 **Board of Directors' Report – P. Weismantle**

- A. The Board reviewed SGCC legal matters and received guidance from Bill Hannay
- B. ANSI/ISO 17065 accreditation with AMS as the Certification Body (CB) was finalized September 2nd, 2016. The SGCC program is now covered by this accreditation.
- C. Board make-up and succession planning was addressed
- D. Financial matters we reviewed and the SGCC Board voted to suspend the Business Account fee to licensees for the L17 and F18 certification period
- E. SGCC intends to pursue the development of software intended to provide training to testing laboratory personnel.
- F. The ANSI Z97.1 committee was encouraged to work on the update of the ANSI Z97.1 testing procedures to include consideration of a new impactor design.

10.13.16.7 **Financial Report – E. Rodman - (See Attachment #3)**

10.13.16.8 **Administrator's Report – J. Kent - (See Attachment #4)**

10.13.16.9 **Quick Action Sub-committee Report (No Report)**

10.13.16.10 **Program Testing Results Review (See Attachment #5)**

The results of program testing were reviewed. This data will be maintained for future use.

10.13.16.11 **ANSI Accreditation (See Attachment #6)**

ANSI/ISO 17065 accreditation with AMS as the Certification Body (CB) was finalized September 2nd, 2016. The SGCC program is now covered by this accreditation.

10.13.16.12 **CPSC (See Attachment #7)**

As noted in the attachment, CPSC granted SGCC's petition to replace the test method in CPSC 16 CFR 1201 with ANSI Z97.1. Notice was published March 23, 2016 with an effective date of April 22, 2016.

10.13.16.13 **ANSI Z97.1**

- A. An update of committee activity was provided. The committee has been somewhat dormant after publication of the 2015 standard but intends to initiate the next review cycle in 2017.
- B. **(See Attachment #8)** The ANSI Z97.1 – 2015 standard was publically available September 24th, 2015. The attached memo described the primary standard revisions and implementation of the new ANSI requirements in the SGCC program.

10.13.16.14 **VIG – (See Attachment #9)**

After review of the ANSI TI on VIG and prior SGCC direction, the committee provided the following direction (Attachment #9 reflects direction at the conclusion of the meeting):

- A. Include narrative on VIG hybrid constructions in future revisions
- B. Administrator directed to utilize Q&A sheet as revised
- C. The group requested a future presentation to better understand VIG

10.13.16.15 **Canadian CAN/CGSB 12.1 – (See Attachment #10)**

10.13.16.16 **SG Labeling and the Building Code**

SGCC, ANSI, CPSC, CAN/CGSB and the building code(s) (as well as others) all have requirements for the permanent labelling of safety glazing. SGCC has attempted to assemble all these requirements. Upon review, there is clearly some ambiguity and room for interpretation. The question was also asked if there may be a way to simplify these requirements. After discussion:

- A. John Kent will further assemble and review material for any possible future simplification
- B. All were encouraged to forward any information on this subject
- C. Bill Hannay will contact CPSC to clarify CPSC labelling requirements to determine if there is any opportunity to reduce label content

10.13.16.17 The meeting was adjourned for the day at 4:55pm by Chairman Mark Cody.

10.14.16.1 The meeting was called to order at 8:35am by Chairman Mark Cody and a quorum declared.

10.14.16.2 **Testing Laboratory Status -**

- A. **(See Attachment #11)** The status of SGCC Approved Testing Laboratories were reviewed.
- B. Due to program procedural issues, ANSI Z97.1 revisions and changes with CPSC, the SGCC laboratory manual has been significantly revised (format and content). The revised DRAFT document was shared with the group. After discussion the SGCC laboratory

testing committee was directed to review the document and upon acceptance authorized to approve the document. A call will be organized in the near future.

- C. It was earlier noted the SGCC Board intends to pursue the development of software intended to provide training to testing laboratory personnel.

10.14.16.3 **Fabricator Rep's and Agents (See Attachment #12)**

After discussion a motion was made by Weismantle/Merryman to accept revisions to the CPD and License Agreement as noted clarifying an SGCC Licensee must be a manufacturer/fabricator of safety glazing.

Vote: Unanimous Affirmative
Motion Passed

10.14.16.4 **SGCC Quality Assurance Requirements**

Requirements for an SGCC Certified Licensee's quality assurance program have remained unchanged for several years. Question was raised if changes should be made. After discussion the matter was referred to the SGCC Laboratory and QA Sub-Committee.

10.14.16.5 **New Business (See Attachment #13)**

- A. Is Laminated Patterned Glass (LPG) certified separately from Laminated Transparent Glass (LTG)? After review a motion was made by Weismantle/Hetrick, NO, LPG is not certified separately from LTG. Guideline L.1 shall be revised as edited.

Vote: Unanimous Affirmative
Motion Passed

- B. Further question was raised as to how Laminated Specialty Products (LSP) should be certified. It was agreed to include this topic at the next meeting considering such factors as inserts, interlayers, encapsulation, thickness, color/tint, material chemical composition.

10.14.16.6 **Old**

NONE

10.14.16.7 **Next Meeting**

2017 The SGCC Certification Committee meeting is tentatively scheduled for September 14-15th in the Sackets Harbor, New York area.

2018 October 3-4 at Naples Bay Resort, Naples Bay Florida

2019 October in the Dallas Fort Worth area.

10.14.16.8 The meeting was adjourned by the chair at 10:05 AM.

SGCC ANTITRUST COMPLIANCE GUIDELINES

A. It is the policy of SGCC to comply fully with the antitrust laws applicable to trade association activities.

B. In furtherance of this policy, all SGCC meetings are attended by SGCC legal counsel, and the SGCC's officers, directors, and Administrator periodically consult with SGCC legal counsel.

C. Each participant in SGCC activities has a responsibility to avoid any improper conduct from an antitrust standpoint. The following guidelines will assist in meeting this responsibility.

1. SGCC meetings are held solely to manage and operate SGCC and its certification program, in accordance with SGCC's corporate purposes, the SGCC Bylaws, and the Certified Products Directory.

2. No participant in SGCC activities, including the certification program and standards development efforts (such as ANSI Z97.1), should attempt to misuse his or her position within SGCC to gain an unfair competitive advantage on behalf of his or her company.

3. To avoid antitrust problems (either civil or criminal), the following legally-sensitive subjects should not be discussed by competitors at or during SGCC meetings:

- a. Future marketing plans of specific competitors;

- b. Any complaints or business plans relating to specific customers, suppliers, geographic markets or products;

- c. Agreements between competitors to allocate markets, customers or products;

- d. Agreements between competitors to refuse to deal with a supplier or a customer;

- e. Purchasing plans or bidding plans (except privately between two parties with a vertical commercial relationship such as supplier and customer); or

- f. Current or future price information and pricing plans, bidding plans, refund or rebate plans, discount plans, credit plans, specific product costs, profit margin information or terms of sale.

Any question regarding the legality of a discussion topic or business practice should be brought to the attention of SGCC legal counsel* or your company's individual legal counsel.

April 2010

* William M. Hannay, Schiff Hardin LLP, 7200 Sears Tower, Chicago, IL 60606; (312) 258-5617; (312) 258-5700 (fax); e-mail: whannay@schiffhardin.com.



safety glazing certification council
P.O. BOX 730
SACKETS HARBOR, N. Y. 13685
PHONE 315-646-2234
FAX 315-646-2297

SGCC Committee Structure (as of 10/14/2016)

SGCC Board of Directors		President: Brian Loukes
Scope: The overall affairs of the Council shall be managed by its Board of Directors.		
Members		
<u>Public Interest</u>	<u>Business Community</u>	
Peter Weismantle	Richard Paschel	
June Willcott – Vice President	Shane Merryman - Secretary	
Elaine Rodman - Treasurer	Rick Wright	
William Nugent	Brian Loukes	
Patrick Loughran	Mark Cody	

Sub Committee: <u>Certification Committee</u>	Chair: Mark Cody
Scope: It shall be the duty of this Committee to formulate, review, administer and apply a certification program for the Council.	
Members	
All Licensees and Board Members	

Sub Committee: <u>Quick Action</u>	Chair: Mark Cody
Scope: Between meetings resolution of any issue, appeal or request for review that can not be dealt with by the administrator, or is beyond the guidance provided to the Administrator or for which the Administrator has rendered a decision that is not acceptable by the applicant.	
Members	
SGCC President	Brian Loukes
Certification Committee Chair	Mark Cody
Public Interest	June Willcott

Sub Committee: <u>Nominating</u>	Chair: Richard Paschel	Public Interest Member: Peter Weismantle
Scope: The Nominating sub committee is a subcommittee of the Board and appointed by the President to research and present a slate of SGCC Board nominees and officers for the annual SGCC participants meeting.		

Sub Committee: <u>Time, Place and Marketing</u>	Chair: Elaine Rodman
Scope: Canvas for scheduled meetings of glass and associated industry meetings; develop a list of possible locations and specific dates for future meetings for submittal to participants for vote. Maintain SGCC marketing plan.	
Members	
Rick Wright	

Sub Committee: Laboratory and QA Inspection		Chair: Bernie Herron
Scope: Address and resolve concerns related to the interrelationship between the laboratories, the administrator, and SGCC participants. Development and maintenance of the laboratory testing manual and program quality assurance requirements.		
Members		
Wayne Griffin		Rick Wright
Mark Cody		

Annual Financial Comparison Summary
2011 Through 2016 (June 30)

Revenues	2011	2012	2013	2014	2015	2016
Administrative	\$ 537,804	\$ 573,698	\$ 526,839	\$ 632,317	\$ 698,825	\$ 860,756
Testing	\$ 849,675	\$ 989,037	\$ 1,003,728	\$ 952,625	\$ 1,186,707	\$ 1,461,625
Business Account Income	\$ -	\$ 15,905	\$ 32,297	\$ 35,235	\$ 37,361	\$ 41,814
Impactor Bags	\$ 1,395	\$ 75	\$ 600	\$ 525	\$ 1,725	\$ 675
Test Labs Under Five	\$ -	\$ -	\$ -	\$ -	\$ -	\$ -
Interest Income	\$ 14,685	\$ 5,490	\$ 8,740	\$ 3,527	\$ 10,444	\$ 6,370
Total Revenue	\$ 1,403,559	\$ 1,584,205	\$ 1,572,204	\$ 1,624,229	\$ 1,935,062	\$ 2,371,240
Test Fee Transfers	\$ -	\$ -	\$ 84,280	\$ 46,637	\$ 56,447	\$ 55,868
Total Revenue (Discretionary)	\$ 16,080	\$ 21,470	\$ 125,917	\$ 85,924	\$ 104,252	\$ 104,052

Expenses	2011	2012	2013	2014	2015	2016
Administrative	\$ 537,804	\$ 573,698	\$ 526,839	\$ 632,317	\$ 698,825	\$ 860,756
Testing	\$ 849,675	\$ 989,037	\$ 919,448	\$ 905,988	\$ 1,130,260	\$ 1,405,757
Legal	\$ 20,781	\$ 27,541	\$ 21,821	\$ 20,144	\$ 13,546	\$ 25,717
Accounting	\$ 3,100	\$ 3,100	\$ 3,100	\$ 3,100	\$ 3,100	\$ 3,100
Board Meetings	\$ 12,310	\$ 12,389	\$ 10,591	\$ 15,626	\$ 15,522	\$ 14,766
<i>Meetings (Hotel expenses etc.)</i>	\$ 6,045	\$ 8,054	\$ 5,030	\$ 10,415	\$ 8,449	\$ 7,884
<i>Meetings (Board Mbr Exp.)</i>	\$ 4,805	\$ 4,335	\$ 3,864	\$ 4,374	\$ 4,806	\$ 3,231
<i>Meetings (JGK Assoc. Mtg. Exp.)</i>	\$ 1,460	\$ -	\$ 1,697	\$ 837	\$ 2,267	\$ 3,651
Miscellaneous	¹ \$ 3,420	\$ 167	\$ -	\$ -	¹ \$ 3,500	\$ 280
Membership Fees	² \$ -	² \$ -	² \$ -	\$ 2,500	\$ 3,667	\$ 2,500
Insurance	\$ 4,458	\$ 4,907	\$ 4,125	\$ 4,994	\$ 5,022	\$ 5,328
Web Page	\$ 5,512	\$ -	\$ -	\$ 5,000	\$ 5,000	\$ 5,000
Marketing	\$ 1,004	\$ -	\$ -	\$ 616	\$ -	\$ -
Bank Charges	\$ 1,584	\$ 1,711	\$ 1,043	\$ 2,233	\$ 2,415	\$ 3,662
Total Expenses	\$ 1,439,648	\$ 1,612,550	\$ 1,486,967	\$ 1,592,518	\$ 1,880,857	\$ 2,326,866
Change in Net Assets	\$ (36,089)	\$ (28,345)	\$ 85,237	\$ 31,711	\$ 54,205	\$ 44,374
Net Assets	\$ 285,792	\$ 257,447	\$ 342,684	\$ 374,395	\$ 428,600	\$ 472,974
Total Expenses (Discretionary)	\$ 52,169	\$ 49,815	\$ 40,680	\$ 54,213	\$ 51,772	\$ 60,353

¹ Impactor Bag Purchase² Membership Fees included in Board Meeting expenses

Investment	Initial Purchase Value	Current Interest Rate	Date of Maturity	Value at End of Fiscal Year 6/30/16	Comments
Key/Union Bank N.A.	\$ 230,000	Variable	5/9/2018	\$ 235,497	5 year structured CD/3.05
NBT (Formerly Alliance)	\$ 230,000	0.30%	7/1/2017	\$ 232,929	12 month CD
Carthage Savings and Loan	\$ 230,000	0.49%	6/24/2017	\$ 233,788	12 month CD
First National Bank of Dryden	\$ 230,000	0.70%	7/15/2017	\$ 236,124	24 month CD interest added
Community Bank	\$ 220,000	0.15%	1/15/2017	\$ 221,435	12 month CD
Watertown Savings CDARS	\$ 220,000	2.03%	1/15/2017	\$ 221,305	24 month CD

Name of Bank	Bank Balance as of 9/30/16
M&T Bank - Checking	\$ 47,706
WSB Savings Account	\$ 251,760

ADMINISTRATIVE REPORT

SGCC Fall Meeting
October 13-14, 2016 Toronto, ON

July 1, 2016 Certified Products Directory (CPD)

<i>Cut-off Date</i>	<i>Copies</i>	<i>Subscription List Mailing</i>
July 1, 2016	2268	2102

	2010 As of Oct	2011 As of Oct	2012 As of Oct	2013 As of Sept	2014 As of Sept	2015 As of Sept	2016 As of Oct
No. of Plants	245	256	262	275	297	331	368
% increase in Plants	+2%	+4%	+2%	+5%	+8%	+12%	+11%
Offshore Plants	50	50	57	59	68	89	105
% increase in Offshore Plants	+16%	+/- 0%	+14%	+4%	+15%	+31%	+18%
No. of Licensees	152	160	168	178	198	229	251
Total Certified Products	1573	1651	1726	1789	1895	2079	2306
% increase in Certified Products	+3%	+5%	+5%	+4%	+6%	+10%	+11%
ANSI Only	22	18	13	13	14	17	6
CPSC Only	18	18	18	17	5	0	0
COMPOSITE	1533	1615	1695	1392	1335	1180	1196
Plants COMP+CAN				43	75	110	141
Products COMP+CAN				367	541	882	1104

Administrative Activity

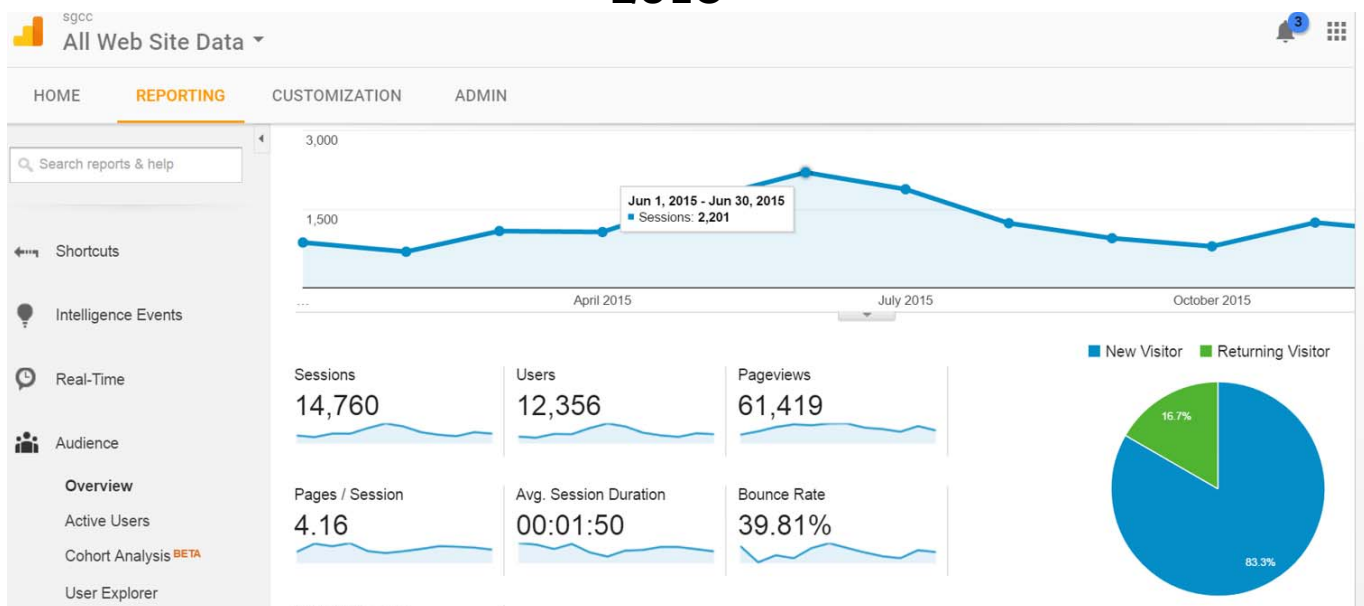
November 2015	Notice of ANSI 2015 Changes to Participants
January 2016	Mailing of January 2016 Certified Products Directory
April 2016	Mailing of L16 Invoices
April 2016	CPSC Ruling Memo Notice to Participants
June 2016	CPSC Implementation Notice to Participants
July 2016	Mailing of July 2016 Certified Products Directory
July 2016	Mailing of Meeting Notices
October 2016	Mailing of F17 Invoices

SGCC Website Report

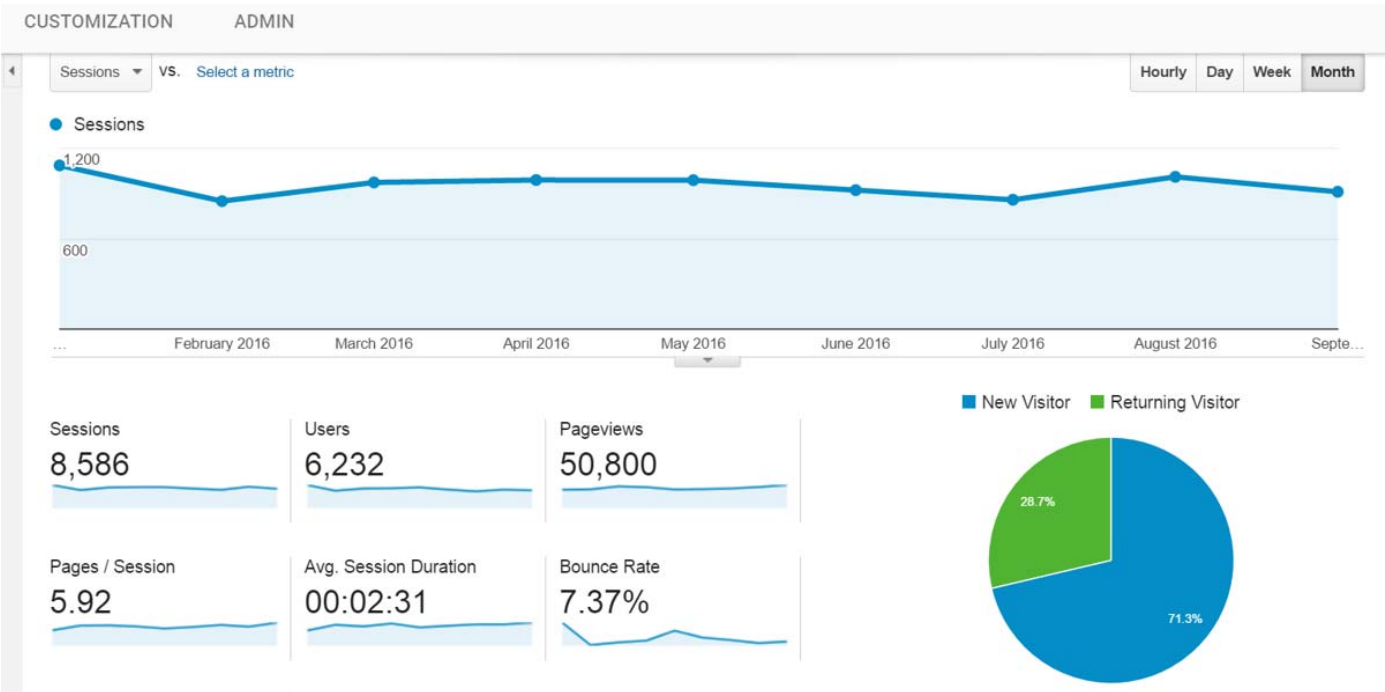
www.sgcc.org

	2013	2014	2015	2016
Total Visits:	3,398	4,855	14,760	8,586
Average Visits per Month:	283	404	1,230	954
Month with Highest Visits (number of visits)	May, 2013 (323)	July, 2014 (584)	June, 2015 (2201)	July, 2016 (1675)
Top three Visiting Countries (% of total visits):	US China UAE	US (56%) China (9%) Canada (6%)	US (44%) Russia (11%) China (7%)	US (54%) China (10%) Canada (6%)
Unique Visitors:		3,546 79% were new users 21% returning visitors	12,356 83% were new users 17% returning visitors	6,232 71% were new users 29% returning visitors
Top Three Visited Pages (% of total visits):	Certified Products Search Record of Compliance Testing Certified Plants	Home Page (31%) Certified Plants (15%) Record of Compliance Testing (8%)	Home Page (36%) Certified Plants (15%) Certified Products (12%)	Home Page (30%) Certified Plants (17%) Certified Products (15%)
Download of Certified Products Directory:	579 downloads	738 downloads	2702 downloads	2228 downloads
	Old Tracking System	New Tracking System (Google Analytics)	Google Analytics	Google Analytics

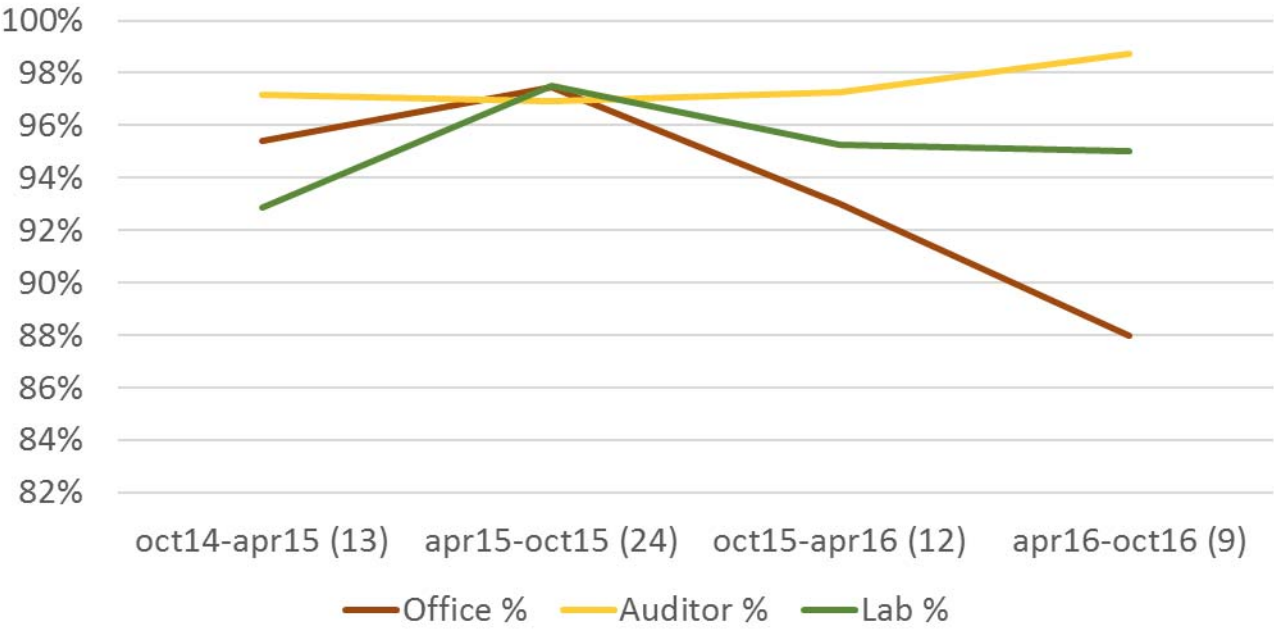
2015



2016 to date



SGCC Customer Feedback - Rolling 6 mos.
(total # of surveys in this period)

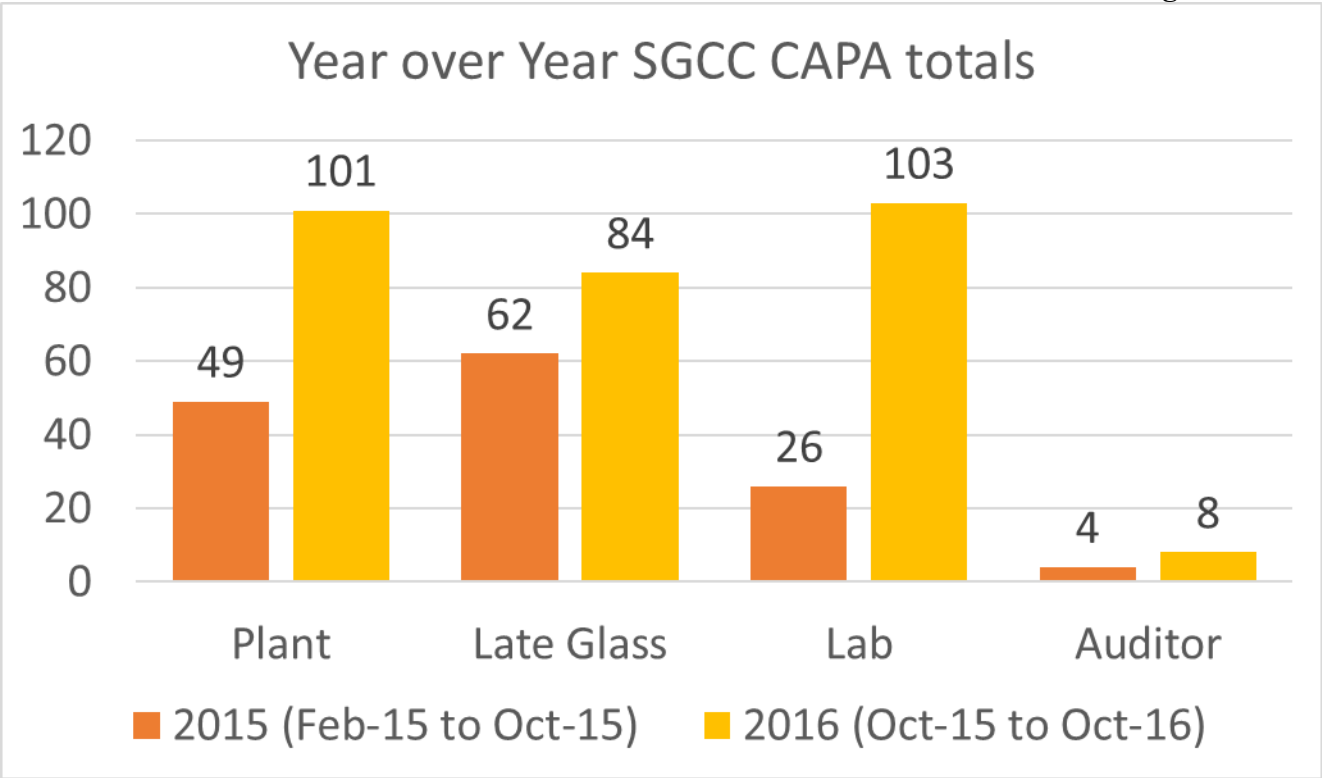


Feedback (Oct-15 to Oct-16):

"Every time we have anything regarding SGCC everyone we deal with is always very professional and timely. There really isn't much more you can ask for as a customer"

"Website provides great information on the certification process."

"We get limited time to ship the glass samples to your lab by sea. Sending them by express courier is really expensive"



Program Testing Results

A05/Agenda Item: C11

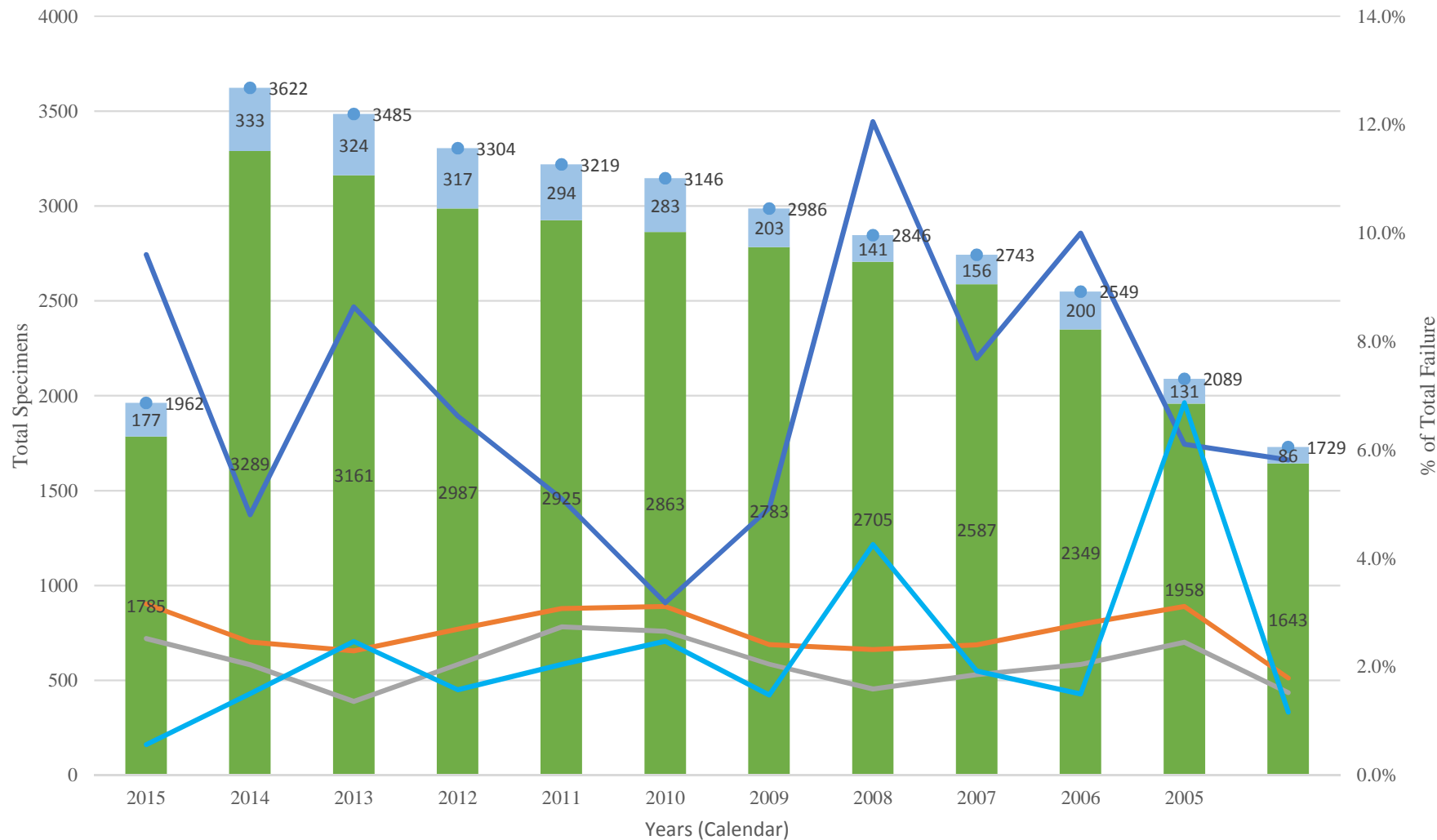
		Selections (% of total products)				Product Failures (Calendar Year)				Failures														
Year	Total Specimens	Participant %	Inspector %	Total Tempered Products %	Total Laminated Products %	Total Failures		Participant Selected % failure	Inspector Selected % failure	Tempered			Tempered (TTG)			Tempered (TPG)			Laminated Impact			Laminated Boil		
						Total Failures	Total Failures (%)			total	% failure	Tempered % of Total Temp Product Failure	total	% failure	Tempered % of Total Temp (TTG) Product Failure	total	% failure	Tempered % of Total Temp (TPG) Product Failure	total	% failure	Laminated Impact % of Total Lami Products Failure	total	% failure	Laminated Boil % of Total Lami Products Failure
2016 to Date	1962	94%	6%	91%	9%	62	3.2%	97%	3%	45	73%	2.5%	29	47%	1.6%	16	26%	0.9%	17	27%	9.6%	1	2%	0.6%
2015	3622	98%	2%	91%	9%	89	2.5%	99%	1%	67	75%	2.0%	55	62%	1.7%	12	13%	0.4%	16	18%	4.8%	5	6%	1.5%
2014	3485	87%	13%	91%	9%	80	2.3%	89%	11%	43	54%	1.4%	27	34%	0.9%	16	20%	0.5%	28	35%	8.6%	8	10%	2.5%
2013	3304	92%	8%	90%	10%	89	2.7%	97%	3%	61	69%	2.0%	50	56%	1.7%	10	11%	0.3%	21	24%	6.6%	5	6%	1.6%
2012	3219	86%	14%	91%	9%	99	3.1%	86%	14%	80	81%	2.7%	49	49%	1.7%	29	29%	1.0%	15	15%	5.1%	6	6%	2.0%
2011	3146	72%	28%	91%	9%	98	3.1%	78%	22%	76	78%	2.7%	43	44%	1.5%	32	33%	1.1%	9	9%	3.2%	7	7%	2.5%
2010	2986	64%	36%	93%	7%	72	2.4%	90%	10%	57	79%	2.0%	40	56%	1.4%	17	24%	0.6%	10	14%	4.9%	3	4%	1.5%
2009	2846	48%	52%	95%	5%	66	2.3%	71%	29%	43	65%	1.6%	23	35%	0.9%	17	26%	0.6%	17	26%	12.1%	6	9%	4.3%
2008	2743	47%	53%	94%	6%	66	2.4%	53%	47%	48	73%	1.9%	34	52%	1.3%	12	18%	0.5%	12	18%	7.7%	3	5%	1.9%
2007	2549	47%	53%	92%	8%	71	2.8%	62%	38%	48	68%	2.0%	N/A	NA	NA	N/A	NA	NA	20	28%	10.0%	3	4%	1.5%
2006	2089	41%	59%	94%	6%	65	3.1%	83%	17%	48	74%	2.5%	N/A	NA	NA	N/A	NA	NA	8	12%	6.1%	9	14%	6.9%
2005	1729	53%	47%	95%	5%	31	1.8%	65%	35%	25	81%	1.5%	N/A	NA	NA	N/A	NA	NA	5	16%	5.8%	1	3%	1.2%
2004	1620	42%	58%	N/A	N/A	36	2.2%	67%	33%	N/A	N/A	NA	N/A	NA	NA	N/A	NA	NA	N/A	N/A	NA	N/A	N/A	NA
2003	1536	24%	76%	N/A	N/A	31	2.0%	55%	45%	N/A	N/A	NA	N/A	NA	NA	N/A	NA	NA	N/A	N/A	NA	N/A	N/A	NA
2002	1470	43%	57%	N/A	N/A	26	1.8%	81%	19%	N/A	N/A	NA	N/A	NA	NA	N/A	NA	NA	N/A	N/A	NA	N/A	N/A	NA
2001	1373	55%	45%	N/A	N/A	33	2.4%	76%	24%	N/A	N/A	NA	N/A	NA	NA	N/A	NA	NA	N/A	N/A	NA	N/A	N/A	NA
2000	1281	72%	28%	N/A	N/A	21	1.6%	33%	67%	N/A	N/A	NA	N/A	NA	NA	N/A	NA	NA	N/A	N/A	NA	N/A	N/A	NA

Notes:

Failure totals for tempered and laminated glass was not recorded until 2005

N/A = Not Available

Total Specimens (Tempered & Laminated) vs. % Total Product Failure



Total Tempered Products Tested

Total Failures (%)

Laminated Impact % of Total Lami Products Failure

Total Specimens

Total Laminated Products Tested

Tempered % of Total Temp Product Failure

Laminated Boil % of Total Lami Products Failure

CERTIFICATE of ACCREDITATION

PRODUCT CERTIFICATION

The **American National Standards Institute** hereby affirms that

Administrative Management Systems, Inc. (AMS)

100 W. Main St., Sackets Harbor, NY 13685, USA

ACCREDITATION ID# 0961

meets the ANSI accreditation program requirements and those set forth in

ISO/IEC 17065:2012 Conformity assessment – Requirement for bodies certifying products, processes and services

LIST OF CERTIFICATION SCHEME(S)

IGCC/IGMA Certification Program for Insulating Glass

NACC North American Contractor Certification Program for Architectural Glass and Metal Contractors

WDMA Hallmark Certification Program

SGCC Safety Glazing Certification Council Certification Program

for programs within the following

SCOPE OF ACCREDITATION

GRANTED 2014-10-27:

81.040.20: Glass in building

91.060.50: Doors and windows. Including door sets, their components, blinds, shutters. Door and window hardware



**ANSI Accredited Program
PRODUCT CERTIFICATION**

ANSI VICE PRESIDENT, ACCREDITATION SERVICES

2016-12-01

VALID THROUGH



IAF Product
MLA Signatory



safety glazing certification council

P.O. BOX 730
SACKETS HARBOR, N. Y. 13685
PHONE 315-646-2234

To: All SGCC Licensees, Interested Parties and Approved Laboratories
From: John Kent, SGCC Administrative Manager
Subject: CPSC Ruling
Date: April 1, 2016

It is with great pleasure that I announce to you that the Consumer Product Safety Commission (CPSC) has granted SGCC's petition to streamline and simplify the process of testing safety glazing materials by eliminating the existing CPSC test method contained in 16 CFR 1201.4 and replacing it with the applicable test provisions of ANSI Z97.1-2015.

The full decision issued by the CPSC on March 23, 2016, may be viewed at <http://www.sgcc.org/Information.aspx>. The effective date of the change will be April 22, 2016. While there are other minor changes to the CPSC rule, the major effect is that for the first time in nearly 40 years the US safety glazing community will be able to test to a single test method. SGCC initially filed its petition with the commission in 2012 and diligently worked with the CPSC staff over the past four years to achieve this important result.

Earlier this week, the SGCC Board of Directors reviewed implementation of the CPSC decision and decided that while in the future there may need to be minor changes to labeling and test sample submittal procedures, there will be no effect on the SGCC process for this certification period, first of 2016 (F16). This is in large part due to the fact that SGCC previously decided to do all testing for F16 to the ANSI Z97.1-**2015** test standard.

Please join me in congratulating SGCC and everyone involved in this landmark decision for the safety glazing community.

If you have any questions, feel free to contact us any time. Further direction in regard to the Last of 2016 (L16) certification period, which starts July 2016, will be forthcoming.

Best Regards,

John G. Kent

A handwritten signature in black ink, appearing to read 'John G. Kent', with a stylized flourish at the end.

SGCC Administrative Manager



safety glazing certification council

P.O. BOX 730

SACKETT'S HARBOR, N. Y. 13685

PHONE 315-646-2234

E-mail: staff@amscert.com

A08

January 5, 2016

IMPORTANT SGCC INFORMATION **SGCC Implementation of New ANSI Z97.1 "2015"**

The latest version of ANSI Z97.1 (now 2015) was made publicly available as of September 24, 2015. At the fall 2015 SGCC meeting, it was agreed to utilize the new version of ANSI Z97.1 starting in the First of 2016 (F16) certification period. We would recommend obtaining a copy of the new standard for reference if you have not already done so. Copies may be purchased as follows:

Link to Z97 website: <http://www.ansiz97.com> To purchase by phone: (212) 642-4900

Summary of Changes in Standard

(See Final Page)

Effect on Safety Glazing Producers

- The standard year designation will need to be updated on your permanent label once testing to the 2015 version of the standard is completed.
- For laminated and organic coated glass producers, SGCC shall default to boil testing. Should you wish to have your product "bake" tested instead, you will need to notify SGCC.
- Review weathering requirements as applicable.

Effect on SGCC Approved Laboratories

- Acceptance criteria has changed, review, train, and implement for 2015 version testing.
- Prepare for Bake test of laminated and organic coated glass.
- Review weathering requirements (indoor use only) as applicable.

Implementation Schedule

<u>SGCC Certification Period</u>	<u>Test</u>	<u>Labeling</u>
Last Half 2015 (L15)	If testing is not already complete and lab can accommodate, per licensee request, ANSI Z97.1 - 2015 testing shall be allowed.	
First Half 2016 (F16)	2015	2009 (prior to test)
Last Half 2016 (L16)	2015	2015 (see note 2 below)

Changes to SGCC Label

ANSI Z97.1-2015 requires the following label information:

1. Supplier's name or mark
2. "ANSI Z97.1-2015"
3. Test Size (U or L), and Drop Height Class (A, B)
4. Place of fabrication (If more than one plant)

Typical SGCC Label (Composite + CAN)

Z97.1-2009

ABC Glass - Plant A (Optional)
16 CFR 1201 II
ANSI Z97.1 - **2009**
CAN/CGSB 12.1-90
SGCC 9999 1/4UA

Z97.1-2015

ABC Glass – Plant A (Optional)
16 CFR 1201 II
ANSI Z97.1 - **2015**
CAN/CGSB 12.1-90
SGCC 9999 1/4UA

Notes:

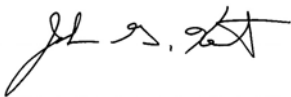
- 1) Testing to the ANSI Z97.1-2009 version of the standard will not be considered equivalent to the 2015 version.
- 2) Labeling of product to ANSI Z97.1-2015 shall not occur until 2015 version testing has passed.
- 3) F16 testing to ANSI Z97.1-2015 shall be on 34 x 76-inch sample for companies wishing an unlimited size designation.
- 4) Products that are certified "Indoor Use Only" will need to retest to the new indoor weathering requirements of the 2015 standard by 1/1/2017.
- 5) SGCC labeling requirements are minimum requirements for SGCC. Other jurisdictions, standards and codes may have additional requirements.
- 6) SGCC Guideline G.5 should be noted:

G.5

The SGCC® item number, when used as part of a permanent label, designates the name of the licensee (participant) and also the location of the manufacturing plant.

Thank you for your attention to this matter. If you have any questions, please feel free to contact us any time and as always, thank you for your support of the SGCC Certification process.

Best regards,



John G. Kent
SGCC Administrative Manager

“Summary” of Changes to ANSI Z97.1 - 2015

(The following provides an abbreviated review of changes between the 2009 and 2015 version of the standard. This should not be used as a substitute for a full review and understanding of the changes between the 2 versions of the standard.)

1. Revision Cycle
 - a. 2009 – Revision started
 - b. 2014 – Full standard ballot
 - c. 2015 (September) – Standard publically available
 - d. 2016 – Next revision cycle to start
2. Wired Glass (Monolithic) – Applicability removed (Class C, 12-inch drop removed)
3. Thermal Test (Dry Bake) – Test added as an alternate to (wet) boil (16 hours @ 100°C) applicable to laminated and organic coated glass
4. Acceptance Criteria (mode of breakage) – 4 types created
 - a. Type 1 – Fragments contained – Laminated and Organic Coated Glass
 - b. Type 2 – 10 largest particles – Tempered
 - c. Type 3 – Stiffness and hardness – Plastic
 - d. Type 4 – No break – Applicable to all (tempered must also pass center punch test)
5. Type 1 – Fragments contained
 - a. 3-inch sphere with 4-pounds force, and -
 - b. Total detached particles < the equivalent weight of 15.5 in²
 - c. No individual detached particle > the equivalent weight of 6.82 in²
 - d. Exempt detached particles < 1 in²
6. Technical Interpretations – The technical interpretations to the 2009 standard were added dealing with tempered glass center punch area of exclusion and weathering acceptance criteria.
7. Weathering –
 - a. Various clarifying language
 - b. Changes to indoor use only products
 - c. Appendix B – Weathering Table added
8. Marking – No changes other than the year designation



safety glazing certification council

P.O. BOX 730

SACKETS HARBOR, N. Y. 13685

PHONE 315-646-2234

E-mail: staff@amscert.com

October 13, 2016

VIG ANSI Interpretation and Information

VIG is a developing technology. These guidelines will be subject to future updates and revisions. Recently, the ANSI Z97.1 committee issued a TI (Technical Interpretation) on VIG (Vacuum Insulating Glass) testing. Please visit <http://www.ansiz97.com/interpretation/> for this and other ANSI Z97.1 Technical Interpretations. Also, see below FAQs SGCC has assembled.

1. Q- Does SGCC certify vacuum insulating glass (VIG), and how is it tested?
A- SGCC provides certification to ANSI Z97.1-2015. There has been some question as to how vacuum insulating glass (VIG) would be tested. On July 14th, 2016 the ANSI committee rendered the attached Technical Interpretation (TI 20160624 001 VIG). In summary, a VIG must be tested in a “final product” condition as a unit after the complete VIG process. With passing test results in accordance with ANSI Z97.1-2015 and this TI, SGCC would offer certification.
2. Q- How long is the testing?
A- VIG testing for SGCC certification should take no longer than normal (tempered, laminated) testing. If advanced arrangements are made with the test lab, we have seen testing complete in a matter of days from receipt at the lab.
3. Q- What are the requirements for samples?
A- See ANSI TI 20160624 001 VIG which requires testing in a “final product” condition. Other sample requirements (size and quantity) are the same as normal tempered and laminated glass. Each nominal thickness combination should be tested and certified separately and this will cover any nominal thickness combinations within the certified products. For example testing of 4+4mm and 5+5mm would certify any combination of 4 or 5 mm. Vacuum space width, shall not be a factor in certification other than to determine overall nominal thickness to be certified.
4. Q- What is the cost?
A- The selected lab would need to be consulted for testing fees, but we would expect the fee to be at or near normal tempered or laminated glass testing. Certification fees would be the same as the SGCC published fees.
5. Q- Is low-E required in the test samples?
A- Application of SGCC guidelines would be the same as for non-VIG. For example SGCC guideline T.3 does not require low-E be present in test samples.
6. Q- How would VIG be evaluated after impact?
A- Laminated glass in a VIG is evaluated as ANSI Type 1. Tempered glass in a VIG is evaluated as ANSI Type 2. All ANSI protocols are applicable.

SGCC will update information as it becomes available. If you have any additional questions or input at this time, please feel free to contact Katrina Stafford (kstafford@amscert.com).

CGSB Update (as of 9/2016)

A notification has been issued to the Canadian Glass Committee voting members regarding all the CAN/CGSB glass standards. Per Standards Council of Canada guidelines, any standard developed under SCC guidelines **must be reviewed periodically** and the CAN/CGSB glass standards are very time dated. For this reason, the Canadian Glass Committee has been asked to vote on whether to approve, affirm or withdraw the individual standards listed below:

There are three different proposed actions as follows:

New Editions

CAN/CGSB-12.1 – *Safety Glazing*

CAN/CGSB-12.8 – *Insulating Glass Units (proposed work item)*

Reaffirmations

CAN/CGSB-12.2 – *Flat, Clear Sheet Glass*

CAN/CGSB-12.3 – *Flat, Clear Float Glass*

CAN/CGSB-12.4 – *Heat Absorbing Glass*

Withdrawals

CAN/CGSB-12.6 – *Transparent (one-Way) Mirrors*

CAN/CGSB-12.9 – *Spandrel Glass*

CAN/CGSB-12.10 – *Glass, Light and Heat Reflecting*

CAN/CGSB-12.11 – *Wired Safety Glass*

CAN/CGSB-12.12 – *Plastic Safety Glazing Sheets*

CAN/CGSB-12.13 – *Patterned Glass*

CAN/CGSB-12.20 – *Structural Design of Glass for Buildings*

One particular item of note is that a standard that has not been revised since the original date of publication can be reaffirmed. If a standard has had a revision, even a minor one, it cannot be reaffirmed, it can become a new work item or withdrawn. **The Glass Committee did review the CAN/CGSB 12.2, 12.3, AND 12.4 and these standards still have validity in the National Building Code of Canada. The CAN/CGSB 12.6, 12.9, 12.10, 12.12, 12.13 and 12.20 have not been reviewed and CGSB is proposing to have these standards withdrawn.**

The Glass Committee did vote to withdraw CAN/CGSB 12.11, Wired Safety Glass.

CAN/CGSB 12.1, Safety Glazing is now out for final vote by the committee. If no substantive/editorial comments are received, the standard will go for publication and translation into French.

The CAN/CGSB 12.8, Insulating Glass Units is a new work item for the Committee and efforts are underway to secure funding for this work.

This ballot is closing Friday September 30th, 2016 and the results compiled for the committee's review.

Margaret Webb

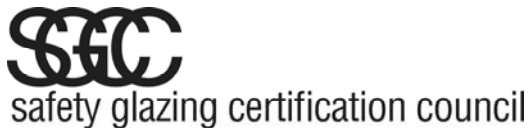
SGCC Testing Laboratory Status

(Last updated 9/22/2016)

7. Laboratory Agrees that initial approval by the SGCC Certification Committee is contingent upon an initial survey of Laboratory's test facilities by the SGCC. Laboratory agrees to pay the cost of the initial survey and inspection of the testing facilities. In order for a test facility to be considered for initial approval, a letter of interest or intent to use must be provided from 5 certified fabrication facilities. Ongoing laboratory approval is subject to approval by the SGCC Certification Committee and shall be for a period of two (2) years. During this period the laboratories facilities shall be re-surveyed and all issues arising from this survey resolved. A non-refundable fee of \$3000 annually for each facility shall be charged for SGCC Laboratory approval and surveys. This fee shall be waived under the following conditions:

1. During the first 2 calendar years of initial SGCC Lab approval
2. When 5 or more SGCC participating plants have selected the facility as their designated testing laboratory for that year.

Company	Location	Date of Initial Approval	Date of Last Inspection	Approved by SGCC	Accredited to ISO/IEC 17025/Agency	Signed Agmt (date)	No. of Plants
Intertek/ATI	Fresno, CA	11/18/1997	3/4/2016	11/3/2015	IAS TL-264	11/13/2015	45
	Kent, WA	10/29/2009	Tent 11/7/16	11/3/2015	IAS TL-330	11/13/2015	11
	Plano, TX	7/1/2004	10/9/2015	11/3/2015	IAS TL-331	11/13/2015	38
	St. Paul, MN	10/6/1992	6/20/2016	11/3/2015	IAS TL-285	11/13/2015	20
	York, PA	6/30/1985	9/3/2015	11/3/2015	IAS TL-144	11/13/2015	58
	Lithia Springs, GA	5/17/2012	Tent 11/21/16	11/3/2015	IAS TL-338	11/13/2015	23
Intertek	Cortland, NY	1981	11/17/2015	11/3/2015	IAS TL-212	12/10/2015	22
Intertek	Montreal QC	2/20/2015	1/20/2015	11/3/2015	SCC 1003-15/84	1/28/2015	6
Fenestration Testing Laboratories	Medley, FL	10/2/1997	Tent 10/20/16	11/3/2015	A2LA #3308.01	10/19/2015	60
National Certified Testing Laboratories, Inc.	Everett, WA	10/14/1997	Tent 11/8/16	11/3/2015	A2LA #3054.03	10/19/2015	14
	York, PA	5/19/2011	11/19/2015	11/3/2015	A2LA #3054.01	10/19/2015	12
Bowser-Morner, Inc.	Dayton, OH	1991	9/24/2015	11/3/2015	L-A-B #L2444	10/22/2015	17
Construction Consulting Laboratory West	Ontario, CA	11/19/1997	2/29/2016	11/3/2015	IAS TL-226	12/4/2015	23
Element Materials Technology	Des Moines, IA	6/11/1999	8/26/2015	11/3/2015	A2LA #1479.02	12/1/2015	10
	Wausau, WI	11/29/2011	8/26/2016	11/3/2015	A2LA #1479.04	10/19/2015	6



Administrative Management Systems, Inc.
Administrative Office
PO Box 730, 205 West Main
Sackets Harbor, NY 13685
Phone: (315) 646-2234
Fax: (315) 646-2297
E-mail: staff@amscert.com

Fabricator Rep's and Agents

A. Definitions

1. Manufacturer (Fabricator) – Company and location where product is made into a safety glazing
2. Agent – A company or individual (other than an employee of the Manufacturer) claiming to represent the Manufacturer exclusively or otherwise. This representation may be for any number of reason's (sales, distribution, private branding, business representation, translation)

B. Issue

Can an agent be a Licensee?

11.4.15.4 Fabricator Rep's and Agents

There appears to be some discrepancy between various SGCC documents if only manufacturer/fabricators can be SGCC licensees. Additionally there has been some ambiguity as to the relationship of some representatives and the ultimate fabrication facility. Bill Hannay was requested to investigate the issue and provide a recommendation. There was a preference that only manufacturer/fabricators can be licensees.

If “NO” then:

C. Revisions

CPD

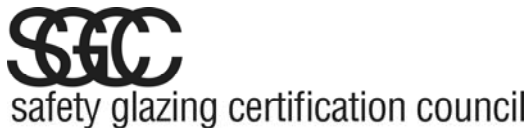
WHO CAN BECOME A LICENSEE?

Any manufacturer of safety glazing materials ~~or any party contracting for the manufacture of safety glazing materials~~ is eligible, on a voluntary basis, to become a licensee. A manufacturer is the entity who fabricates, constructs, treats, or combines glazing materials with other materials to make a final safety glazing material.

PRODUCTS LISTED IN CERTIFIED PRODUCTS DIRECTORY

Approved products are listed in a Certified Products Directory (CPD). The directory is published every six months and is sent to door, sash and building products manufacturers, glazing contractors, home builders, architects, regulatory agencies, code-making groups, etc. Directory listings contain the licensee's name, ~~for licensee's designated agent~~, the licensee's plant location and product description of safety glazing material certified by SGCC®.

LICENSE AGREEMENT (See attached edits)



Administrative Management Systems, Inc.
Administrative Office
 PO Box 730, 205 West Main
 Sackets Harbor, NY 13685
 Phone: (315) 646-2234
 Fax: (315) 646-2297
 E-mail: staff@amscert.com

Laminated Glass

1) LTG vs LPG

L.1

Certification of clear laminated glass will also cover tinted, heat absorbing, and coated glasses, clear or tinted interlayer, and both flat and bent laminates of the same nominal thickness. (Revised 7/1/2016)

L.5

Laminated safety glass shall be identified by type of base glass, per Guideline L.8, and certified in 1 of 3 product type codes (A, HS, T). In consideration of Guideline L.1, Laminated Transparent Glass (LTG) is defined as 2 or more lites of glass with the same family of polymer (interlayer(s)) between the lites. Laminated Patterned glass (LPG) shall be defined the same as LTG except that at least one lite shall be patterned glass. Laminated Specialty Product (LSP) shall be defined as 2 or more lites of glass or other material with multiple interlayers, same or different family, with an insert (other layer of sheeting or non-continuous material) encapsulated in between the interlayers. For LSP, changes in material of plies or insert and changes in thickness of insert shall require separate certification. Changes in coatings, color or decorative pattern shall be included in the same certification. (Revised 10/2/2014)

T.1

Certification of either flat glass or patterned glass will not cover the other except as noted in Guideline T.2. (Flat glass designates ground and polished plate, float and sheet glass.) (Revised 7/1/2016)

Glass Product Type Codes

TTG	TEMPERED TRANSPARENT GLASS
TPG	TEMPERED PATTERNED GLASS
TBG	TEMPERED BENT GLASS
TBP	TEMPERED BENT PATTERNED GLASS
LTG	LAMINATED TRANSPARENT GLASS
LPG	LAMINATED PATTERNED GLASS
LSP	LAMINATED SPECIALTY PRODUCTS
OCG	ORGANIC COATED GLASS
OCH	ORGANIC COATED GLASS HYBRID
SPS	SAFETY PLASTIC SHEET

Laminated Patterned Glass

(H) Laminated Patterned Glass

8-10mm PGT Industries	Nokomis, FL	4812	COMPOSITE	(.090) (s)(ip)(A)	285	U	A
8-10mm PGT Industries	Nokomis, FL	4801	COMPOSITE	(.060) (s)(b)(A)	285	U	A

Issue: Is LPG Certified separately from LTG?

If NO

L.1 Certification of clear laminated glass will also cover tinted, heat absorbing, and coated glasses, clear or tinted interlayer, and flat, patterned and bent laminates of the same nominal thickness. (Revised 7/1/2016)

If YES

L.1 Certification of clear laminated glass will also cover tinted, heat absorbing, and coated glasses, clear or tinted interlayer, and both flat and bent laminates of the same nominal thickness. Certification of either laminated transparent glass (LTG) or laminated patterned glass (LPG) will not cover the other. (Revised 7/1/2016)

2) LSP

	Description	Thickness (mm/inch)	Overall Interlayer	SGCC #
1	3mm glass / 0.030 PVB / Insert / 0.030 PVB / 3mm glass	9.92/0.390 (10mm/3/8)	0.060	#1
2	2.4mm glass / 0.030 PVB / Insert / 0.030 PVB / 2.4mm glass	8.72/.343 (8mm/5/16)	0.060	#1
3	2.4mm glass / 0.030 PVB / Insert / 0.030 PVB / Insert / 0.030 PVB / 2.4mm glass	11.88/.468 (10mm/3/8)	0.090	#2

This product would be an LSP thus SGCC guideline L.5 would apply:

1. Is weathering needed? – SGCC has never required weathering of inserts as long as the insert is encapsulated by the interlayer material. If the insert is some form of plastic interlayer and contributes to adhesion, where the loss of adhesion characteristics would affect the performance of the product, then yes, the insert should be weathered.
2. What needs to be tested? – Since for SGCC certification, initially each nominal thickness must be tested, initially product 1, 2, and 3 should be tested. For on-going certification, we can certify product 1 and 2 under one SGCC number (one test each certification period) since both products in effect have an 0.060 interlayer. Certification (in short) is by nominal thickness, interlayer material and thinnest interlayer. Since in effect Product 3 has a 0.090 interlayer, it would need to be certified separately. Also per L.5, in effect there is a change in thickness of insert from 1&2 to 3 thus requiring a separate certification number.