

July 1, 1972



safety glazing certification council

certified products directory
safety glazing material used in buildings

PROGRAM CONCEPT

This directory is an essential and fundamental part of the Safety Glazing Certification Council, Inc. certification program.

This directory is up-dated and issued at least twice a year and is the only valid source of information concerning SGCC certified safety glazing materials. By specifying or using safety glazing materials bearing the labels listed herein, you can be assured that the manufacturer of the materials named in the label has certified that the labeled materials comply with the safety characteristics established by the American National Standard Z97.1-1972 and that the compliance of the manufacturer with the requirements of that standard is being checked periodically by an independent testing laboratory under the supervision of the Safety Glazing Certification Council, Inc.

Safety Glazing Certification Council, Inc. (not for profit) is the sponsor of this certification program. Any safety glazing material, whether transparent or not, is eligible for certification in this program.

Every manufacturer of safety glazing material is eligible to participate, however his products are not accepted and certified until an independent laboratory test indicates compliance with the standard. Then, at least twice a year, SGCC independently selects samples during unannounced visits to the manufacturing plant or randomly from the market place. The re-examination of these samples is used to provide certification of a continuing nature. Based upon these re-evaluation reports SGCC authorizes continued use of the certification label and product listing in this certified products directory.

The presence of a permanent label (registered and approved by SGCC) will indicate the safety glazing material is in compliance with the "break safe characteristics" of ANS Z97.1-1972.

The SGCC certification label must be permanently marked on each piece of safety glazing material or else it is not certified by SGCC. Typical labels are reproduced in this certified products directory in the same size that you will find them on each piece of safety glazing material.

This directory (one of two to be published yearly) contains a listing of the Certified Safety Glazing Materials of each participant that is in good standing and whose products have been found by test and subsequent evaluation to be in compliance with the requirements of the Specifications.



safety glazing certification council

1640 west 32 place
hialeah, florida 33012

This directory is furnished to you as a service of the Safety Glazing Certification Council. Listed in the directory are safety glazing materials which meet all requirements of the American National Standards Institute (ANSI). Also listed are materials for interior use only, which meet the safety requirements of ANSI but not the weathering requirements. As explained in the directory, one requirement for meeting the ANSI standard provides that all certified safety glazing materials must be available to the independent certification agency for unannounced, random sampling and testing on a periodic and continuing basis. Should you have any questions or comments, or should you wish to receive future copies of this directory (published approximately every six months), please write directly to:

*Mrs. Shirley Stafford
Assistant Secretary
Safety Glazing Certification Council
1640 West 32nd Place
Hialeah, Florida 33012*

SAFETY GLAZING CERTIFICATION COUNCIL

A handwritten signature in cursive script that reads "Robert A. Nance". The signature is written in dark ink and is positioned above a horizontal line.

Robert A. Nance, P.E.
Administrator of Certification

SAFETY GLAZING CERTIFICATION COUNCIL

Widespread use of high performance safety glazing materials in buildings can help to reduce accident frequency and severity. Many states, national lending agencies, sophisticated professionals and local regulatory authorities require the use of safety glazing materials in hazardous locations to reduce the frequency and severity of accidents associated with ordinary materials.

To aid professionals, contractors and owners in the specification and selection of safety glazing materials and to help inspectors identify safety glazing materials and distinguish them from other types, formal certification and labeling is essential.

The certification programs initiated separately by Glass Tempering Association and Safety Glazing Industry, Inc. several years ago have joined forces in the Safety Glazing Certification Council (SGCC). SGCC is a unique organization with balanced leadership equally representative of both public and manufacturing interests.

Building upon established practices, SGCC provides "third party independent laboratory certification" of safety glazing material performance characteristics with respect to the nationally recognized standard and test methods developed by American National Standards Institute. SGCC bases its certification upon product performance evaluation tests conducted at prescribed intervals by experienced professionals.

Types of safety glazing materials which meet all aspects of a nationally recognized standard may be so certified and labeled. Copies of SGCC's bylaws and procedures are available on request. Laboratories experienced in testing of safety glazing materials may qualify as testing agencies. Manufacturers are invited to apply for certification of their safety glazing products.

THE CERTIFICATION COMMITTEE OF THE SAFETY GLAZING CERTIFICATION COUNCIL MET ON MARCH 8, 1972 AND MAY 18, 1972. INTERESTED PERSONS MAY OBTAIN MINUTES OF THESE MEETINGS BY WRITING SGCC.

CERTIFIED PRODUCTS

SGCC-11	Feather-lite	SGCC-60	PPG Industries	SGCC-106	C-E Glass
SGCC-12	Virginia Glass	SGCC-61	PPG Industries	SGCC-107	C-E Glass
SGCC-13	Virginia Glass	SGCC-62	PPG Industries	SGCC-108	C-E Glass
SGCC-14	Virginia Glass	SGCC-63	PPG Industries	SGCC-109	C-E Glass
SGCC-16	S.A. Glaverbel	SGCC-64	PPG Industries	SGCC-110	C-E Glass
SGCC-17	Intercosmic Plastics	SGCC-65	PPG Industries	SGCC-111	C-E Glass
SGCC-18	Southern Plastics	SGCC-66	PPG Industries	SGCC-112	C-E Glass
SGCC-19	Libbey-Owens-Ford	SGCC-67	PPG Industries	SGCC-113	C-E Glass
SGCC-20	Libbey-Owens-Ford	SGCC-68	PPG Industries	SGCC-114	PPG Industries
SGCC-21	Libbey-Owens-Ford	SGCC-69	PPG Industries	SGCC-115	Asahi Glass Co., Ltd.
SGCC-22	Libbey-Owens-Ford	SGCC-70	PPG Industries	SGCC-116	Asahi Glass Co., Ltd.
SGCC-23	Libbey-Owens-Ford	SGCC-71	PPG Industries	SGCC-117	Asahi Glass Co., Ltd.
SGCC-24	ASG Industries	SGCC-72	PPG Industries	SGCC-118	Flex-O-Glass, Inc.
SGCC-25	ASG Industries	SGCC-73	PPG Industries	SGCC-120	Rowland Products, Inc.
SGCC-26	ASG Industries	SGCC-74	PPG Industries	SGCC-121	ASG Industries
SGCC-27	ASG Industries	SGCC-75	PPG Industries	SGCC-122	ASG Industries
SGCC-28	ASG Industries	SGCC-76	C-E Glass	SGCC-123	Scanglas A/S
SGCC-30	ASG Industries	SGCC-77	C-E Glass	SGCC-124	C-E Glass
SGCC-31	ASG Industries	SGCC-78	Guardian Industries	SGCC-125	C-E Glass
SGCC-32	ASG Industries	SGCC-79	C-E Glass	SGCC-126	Libbey-Owens-Ford
SGCC-33	ASG Industries	SGCC-80	Saint Gobain	SGCC-127	Hamilton of Indiana
SGCC-34	Fourco Glass Co.	SGCC-81	Saint Gobain	SGCC-128	Hamilton of Indiana
SGCC-35	Fourco Glass Co.	SGCC-82	Libbey-Owens-Ford	SGCC-129	Hamilton of Indiana
SGCC-36	Fourco Glass Co.	SGCC-83	Guardian Industries	SGCC-130	Guardian Industries
SGCC-37	Vidrierias De Llodio	SGCC-84	Libbey-Owens-Ford	SGCC-131	Guardian Industries
SGCC-38	Vidrierias De Llodio	SGCC-85	Libbey-Owens-Ford	SGCC-132	C-E Glass
SGCC-39	Guardian Industries	SGCC-86	ASG Industries	SGCC-133	C-E Glass
SGCC-40	Guardian Industries	SGCC-87	Globe-Amerada	SGCC-135	Guardian Industries
SGCC-41	Guardian Industries	SGCC-88	Laminated Glass Corp.	SGCC-136	K-S-H, Inc.
SGCC-42	Guardian Industries	SGCC-89	ASG Industries	SGCC-137	C-E Glass
SGCC-43	Guardian Industries	SGCC-90	ASG Industries	SGCC-138	C-E Glass
SGCC-44	Guardian Industries	SGCC-91	ASG Industries	SGCC-139	ASG Industries
SGCC-45	Globe-Amerada	SGCC-92	Virginia Glass	SGCC-140	Minex-Poland
SGCC-46	Asahi Glass Co., Ltd.	SGCC-93	Virginia Glass	SGCC-141	ASG Industries
SGCC-47	C-E Glass	SGCC-94	Virginia Glass	SGCC-142	ASG Industries
SGCC-49	C-E Glass	SGCC-95	Virginia Glass	SGCC-143	ASG Industries
SGCC-50	C-E Glass	SGCC-96	Guardian Industries	SGCC-144	C-E Glass
SGCC-51	C-E Glass	SGCC-97	Guardian Industries	SGCC-145	C-E Glass
SGCC-53	C-E Glass	SGCC-98	Guardian Industries	SGCC-146	C-E Glass
SGCC-54	Hamilton of Indiana	SGCC-99	K-S-H, Inc.	SGCC-147	Dearborn Glass Co.
SGCC-55	Hamilton of Indiana	SGCC-100	C-E Glass	SGCC-150	Libbey-Owens-Ford
SGCC-56	Hamilton of Indiana	SGCC-101	PPG Industries	SGCC-151	Libbey-Owens-Ford
SGCC-57	Hamilton of Indiana	SGCC-102	PPG Industries	SGCC-152	Plaskolite, Inc.
SGCC-58	PPG Industries	SGCC-103	ASG Industries	SGCC-153	Rohm and Haas
SGCC-59	PPG Industries	SGCC-104	Glass Guard	SGCC-154	Rohm and Haas
		SGCC-105	Glass Guard		

CERTIFIED PRODUCTS

For listing by product type, please see page 11.

Asahi Glass Company, Ltd.; Tokyo, Japan

SGCC-46	3/16 inch	tempered transparent glass	Unlimited size
SGCC-116	SS/DS	laminated transparent glass	Unlimited size
SGCC-115	1/4 inch	laminated transparent glass	Unlimited size
SGCC-117	1/4 inch	polished wire glass	Unlimited size

ASG Industries, Inc.; Greenland, Tennessee

SGCC-139	3/16 inch	tempered transparent glass	Unlimited size
SGCC-142	7/32 inch	tempered transparent glass	Unlimited size
SGCC-89	1/4 inch	tempered transparent glass	Unlimited size
SGCC-90	3/8 inch	tempered transparent glass	Unlimited size
SGCC-91	1/2 inch	tempered transparent glass	Unlimited size
SGCC-143	3/4 inch	tempered transparent glass	Unlimited size

ASG Industries, Inc.; Kingsport, Tennessee

SGCC-28	3/16 inch	tempered transparent glass	Unlimited size
SGCC-32	7/32 inch	tempered transparent glass	Unlimited size
SGCC-24	1/4 inch	tempered transparent glass	Unlimited size
SGCC-30	3/8 inch	tempered transparent glass	Unlimited size
SGCC-141	1/8 inch	tempered pattern glass	Unlimited size
SGCC-33	3/16 inch	tempered pattern glass	Unlimited size
SGCC-31	210 inch	tempered pattern glass	Unlimited size
SGCC-25	7/32 inch	tempered pattern glass	Unlimited size
SGCC-27	7/32 inch	laminated transparent glass	Unlimited size
SGCC-26	1/4 inch	laminated transparent glass	Unlimited size
SGCC-86	1/4 inch	polished wire glass (diamond)	Unlimited size
SGCC-121	1/4 inch	polished wire glass (square)	Unlimited size
SGCC-122	1/4 inch	polished wire glass (pinstripe)	Unlimited size
SGCC-103	7/32 inch	pattern wire glass	Unlimited size

C-E Glass; Atlanta, Georgia

SGCC-124	3/16 inch	tempered transparent glass	Unlimited size
SGCC-108	1/4 inch	tempered transparent glass	Unlimited size
SGCC-125	210 inch	tempered pattern glass	Unlimited size

C-E Glass; Fullerton, California

SGCC-107	7/32 inch	tempered pattern glass	Unlimited size
----------	-----------	------------------------	----------------

C-E Glass; Houston, Texas

SGCC-110	3/16 inch	tempered transparent glass	Unlimited size
SGCC-137	1/4 inch	tempered transparent glass	Unlimited size
SGCC-138	210 inch	tempered pattern glass	Unlimited size

C-E Glass; Lancaster, Ohio

SGCC-145	3/16 inch	tempered transparent glass	Unlimited size
SGCC-146	1/4 inch	tempered transparent glass	Unlimited size
SGCC-144	210 inch	tempered pattern glass	Unlimited size

C-E Glass; Long Beach, California			
SGCC-111	3/16 inch	tempered transparent glass	Unlimited size
SGCC-112	1/4 inch	tempered transparent glass	Unlimited size
SGCC-113	210 inch	tempered pattern glass	Unlimited size
C-E Glass; Miami, Florida			
SGCC-76	3/16 inch	tempered transparent glass	Unlimited size
SGCC-77	7/32 inch	tempered transparent glass	Unlimited size
SGCC-49	1/4 inch	tempered transparent glass	Unlimited size
SGCC-50	210 inch	tempered pattern glass	Unlimited size
C-E Glass; Pennsauken, New Jersey			
SGCC-51	1/8 inch	tempered transparent glass	Unlimited size
SGCC-133	3/16 inch	tempered transparent glass	Unlimited size
SGCC-53	1/4 inch	tempered transparent glass	Unlimited size
SGCC-132	210 inch	tempered pattern glass	28" by 54"
C-E Glass; Shawnee, Oklahoma			
SGCC-79	1/4 inch	polished wire glass	Unlimited size
C-E Glass; St. Louis, Missouri			
SGCC-100	1/4 inch	polished wire glass	Unlimited size
SGCC-106	1/4 inch	pattern wire glass (hammered square)	Unlimited size
C-E Glass; Tampa, Florida			
SGCC-109	3/16 inch	tempered transparent glass	Unlimited size
SGCC-47	1/4 inch	tempered transparent glass	Unlimited size
Dearborn Glass Co.; Bedford Park, Illinois			
SGCC-147	7/32 inch	laminated transparent glass (with 0.030 plastic)	Unlimited size
Feather-lite Manufacturing Co.; Hot Springs, Arkansas			
SGCC-11	3/16 inch	tempered transparent glass	Unlimited size
Flex-O-Glass, Inc.; Chicago, Illinois			
SGCC-118	0.080 inch through 0.100 inch acrylic		Unlimited size
Fourco Glass Co.; Fort Smith, Arkansas			
SGCC-36	3/16 inch	tempered transparent glass	Unlimited size
SGCC-35	7/32 inch	tempered transparent glass	Unlimited size
SGCC-34	1/4 inch	tempered transparent glass	Unlimited size
Glass Guard Industries, Inc.; Webster, Massachusetts			
SGCC-104	3/16 inch	tempered transparent glass	Unlimited size
SGCC-105	1/4 inch	tempered transparent glass	Unlimited size
S. A. Glaverbel; Bruxelles, Belgium			
SGCC-16	3/16 inch	tempered transparent glass	Unlimited size

Globe-Amerada Glass Co.; Elk Grove Village, Illinois			
SGCC-87	0.145 inch	laminated transparent glass	34" by 40"
SGCC-45	7/32 inch	laminated transparent glass	Unlimited size
Guardian Industries Corp.; Carleton, Michigan			
SGCC-135	3/16 inch	tempered transparent glass	Unlimited size
SGCC-131	1/4 inch	tempered transparent glass	Unlimited size
Guardian Industries Corp.; Fort Lauderdale, Florida			
SGCC-78	3/16 inch	tempered transparent glass	Unlimited size
SGCC-39	7/32 inch	tempered transparent glass	Unlimited size
SGCC-40	1/4 inch	tempered transparent glass	Unlimited size
SGCC-41	3/8 inch	tempered transparent glass	Unlimited size
SGCC-42	7/32 inch	tempered pattern glass	Unlimited size
Guardian Industries Corp.; Millbury, Ohio			
SGCC-83	3/16 inch	tempered transparent glass	Unlimited size
SGCC-130	1/4 inch	tempered transparent glass	Unlimited size
Guardian Industries Corp.; Torrance, California			
SGCC-44	3/16 inch	tempered transparent glass	Unlimited size
SGCC-96	7/32 inch	tempered transparent glass	Unlimited size
SGCC-43	1/4 inch	tempered transparent glass	Unlimited size
SGCC-97	3/8 inch	tempered transparent glass	Unlimited size
SGCC-98	1/2 inch	tempered transparent glass	Unlimited size
Hamilton of Indiana; Vincennes, Indiana			
SGCC-54	1/8 inch	tempered transparent glass	Unlimited size
SGCC-56	3/16 inch	tempered transparent glass	Unlimited size
SGCC-55	7/32 inch	tempered transparent glass	Unlimited size
SGCC-57	1/4 inch	tempered transparent glass	Unlimited size
SGCC-127	3/8 inch	tempered transparent glass	Unlimited size
SGCC-128	1/2 inch	tempered transparent glass	Unlimited size
SGCC-129	210 inch	tempered pattern glass	Unlimited size
Intercosmic Plastics; Division of ICP Industries, Inc.; Miami, Florida			
SGCC-17	0.090 inch	pattern plastic (for <u>indoor</u> use <u>only</u>)	Unlimited size
K-S-H, Inc.; Crestwood, Missouri			
SGCC-99	0.100 inch	pattern plastic (for <u>indoor</u> use <u>only</u>)	Unlimited size
K-S-H, Inc.; Xenia, Ohio			
SGCC-136	0.080 inch	through 0.125 inch acrylic	Unlimited size
Laminated Glass Corp.; Detroit, Michigan			
SGCC-88	7/32 inch	laminated transparent glass	Unlimited size

Libbey-Owens-Ford Co.; East Toledo, Ohio				
SGCC-23	SS/SS		laminated transparent glass	Unlimited size
SGCC-22	SS/DS		laminated transparent glass	Unlimited size
SGCC-82	1/4	inch	laminated transparent glass	Unlimited size
SGCC-126	1/2	inch	laminated transparent glass	Unlimited size

Libbey-Owens-Ford Co.; Lathrop, California				
SGCC-84	3/16	inch	tempered transparent glass	Unlimited size
SGCC-85	1/4	inch	tempered transparent glass	Unlimited size

Libbey-Owens-Ford Co.; Rossford, Ohio				
SGCC-21	1/8	inch	tempered transparent glass	Unlimited size
SGCC-20	3/16	inch	tempered transparent glass	Unlimited size
SGCC-19	1/4	inch	tempered transparent glass	Unlimited size
SGCC-150	1/2	inch	tempered transparent glass	Unlimited size
SGCC-151	3/4	inch	tempered transparent glass	Unlimited size

Minex-Poland; Poland				
SGCC-140	210	inch	tempered pattern glass	Unlimited size

PPG Industries, Inc.; Creighton, Pennsylvania				
SGCC-114	1/4	inch	laminated transparent glass	Unlimited size

PPG Industries, Inc.; Crestline, Ohio				
SGCC-60	1/8	inch	tempered transparent glass	26 3/4" by 72"
SGCC-65	3/16	inch	tempered transparent glass	26 3/4" by 72"
SGCC-101	7/32	inch	tempered transparent glass	26 3/4" by 72"
SGCC-102	1/4	inch	tempered transparent glass	26 3/4" by 72"

PPG Industries, Inc.; Ford City, Pennsylvania				
SGCC-61	3/16	inch	tempered transparent glass	Unlimited size
SGCC-66	7/32	inch	tempered transparent glass	Unlimited size
SGCC-70	1/4	inch	tempered transparent glass	Unlimited size
SGCC-74	3/8	inch	tempered transparent glass	Unlimited size
SGCC-75	1/2	inch	tempered transparent glass	Unlimited size

PPG Industries, Inc.; Fresno, California				
SGCC-64	3/16	inch	tempered transparent glass	Unlimited size
SGCC-69	7/32	inch	tempered transparent glass	Unlimited size
SGCC-73	1/4	inch	tempered transparent glass	Unlimited size

PPG Industries, Inc.; Mt. Vernon, Ohio				
SGCC-58	1/8	inch	tempered transparent glass	Unlimited size
SGCC-62	3/16	inch	tempered transparent glass	Unlimited size
SGCC-67	7/32	inch	tempered transparent glass	Unlimited size
SGCC-71	1/4	inch	tempered transparent glass	Unlimited size

PPG Industries, Inc.; Mt. Zion, Illinois

SGCC-59	1/8 inch	tempered transparent glass	Unlimited size
SGCC-63	3/16 inch	tempered transparent glass	Unlimited size
SGCC-68	7/32 inch	tempered transparent glass	Unlimited size
SGCC-72	1/4 inch	tempered transparent glass	Unlimited size

Plaskolite, Inc.; Columbus, Ohio

SGCC-152	0.080 inch through 0.125 inch	acrylic	34" by 72"
----------	-------------------------------	---------	------------

Rohm and Haas Co.; Louisville, Kentucky

SGCC-154	0.080 inch through 0.187 inch	Plexiglas K	Unlimited size
----------	-------------------------------	-------------	----------------

Rohm and Haas Co.; Knoxville, Tennessee

SGCC-153	0.100 inch (and greater thicknesses)	Plexiglas G	Unlimited size
----------	--------------------------------------	-------------	----------------

Rowland Products; Kensington, Connecticut

SGCC-120	0.093 inch (and greater thicknesses)	Polycarbonate	Unlimited size
----------	--------------------------------------	---------------	----------------

Saint Gobain; France

SGCC-81	3/16 inch	tempered transparent glass	Unlimited size
SGCC-80	7/32 inch	tempered transparent glass	Unlimited size

Scanglas; Korsor, Denmark

SGCC-123	3/16 inch	tempered transparent glass	Unlimited size
----------	-----------	----------------------------	----------------

Southern Plastics; Columbia, South Carolina

SGCC-18	0.090 inch	pattern plastic (for indoor use only)	Unlimited size
---------	------------	---------------------------------------	----------------

Vidrierias De Llodio; Spain

SGCC-38	3/16 inch	tempered transparent glass	Unlimited size
SGCC-37	7/32 inch	tempered transparent glass	Unlimited size

Virginia Glass Products Corp.; Martinsville, Virginia

SGCC-12	3/16 inch	tempered transparent glass	Unlimited size
SGCC-13	7/32 inch	tempered transparent glass	Unlimited size
SGCC-14	1/4 inch	tempered transparent glass	Unlimited size
SGCC-93	3/8 inch	tempered transparent glass	Unlimited size
SGCC-94	1/2 inch	tempered transparent glass	Unlimited size
SGCC-95	3/4 inch	tempered transparent glass	Unlimited size
SGCC-92	7/32 inch	tempered pattern glass	Unlimited size

CERTIFIED PRODUCTS

For listing by manufacturing plant, please see page 6.

TEMPERED TRANSPARENT GLASS

1/8 inch tempered transparent glass

C-E Glass; Pennsauken, New Jersey	SGCC-51	Unlimited size
Hamilton of Indiana; Vincennes, Indiana	SGCC-54	Unlimited size
Libbey-Owens-Ford Co.; Rossford, Ohio	SGCC-21	Unlimited size
PPG Industries, Inc.; Crestline, Ohio	SGCC-60	26 3/4" by 72"
PPG Industries, Inc.; Mt. Vernon, Ohio	SGCC-58	Unlimited size
PPG Industries, Inc.; Mt. Zion, Illinois	SGCC-59	Unlimited size

3/16 inch tempered transparent glass

Asahi Glass Co., Ltd.; Toyko, Japan	SGCC-46	Unlimited size
ASG Industries, Inc.; Greenland, Tennessee	SGCC-139	Unlimited size
ASG Industries, Inc.; Kingsport, Tennessee	SGCC-28	Unlimited size
C-E Glass; Atlanta, Georgia	SGCC-124	Unlimited size
C-E Glass; Houston, Texas	SGCC-110	Unlimited size
C-E Glass; Lancaster, Ohio	SGCC-145	Unlimited size
C-E Glass; Long Beach, California	SGCC-111	Unlimited size
C-E Glass; Miami, Florida	SGCC-76	Unlimited size
C-E Glass; Pennsauken, New Jersey	SGCC-133	Unlimited size
C-E Glass; Tampa, Florida	SGCC-109	Unlimited size
Feather-lite Manufacturing Co.; Hot Springs, Arkansas	SGCC-11	Unlimited size
Fourco Glass Co.; Fort Smith, Arkansas	SGCC-36	Unlimited size
Glass Guard Industries, Inc.; Webster, Massachusetts	SGCC-104	Unlimited size
S. A. Glaverbel; Bruxelles, Belgium	SGCC-16	Unlimited size
Guardian Industries Corp.; Carleton, Michigan	SGCC-135	Unlimited size
Guardian Industries Corp.; Fort Lauderdale, Florida	SGCC-78	Unlimited size
Guardian Industries Corp.; Millbury, Ohio	SGCC-83	Unlimited size
Guardian Industries Corp.; Torrance, California	SGCC-44	Unlimited size
Hamilton of Indiana; Vincennes, Indiana	SGCC-56	Unlimited size
Libbey-Owens-Ford Co.; Lathrop, California	SGCC-84	Unlimited size
Libbey-Owens-Ford Co.; Rossford, Ohio	SGCC-20	Unlimited size
PPG Industries, Inc.; Crestline, Ohio	SGCC-65	26 3/4" by 72"
PPG Industries, Inc.; Ford City, Pennsylvania	SGCC-61	Unlimited size
PPG Industries, Inc.; Fresno, California	SGCC-64	Unlimited size
PPG Industries, Inc.; Mt. Vernon, Ohio	SGCC-62	Unlimited size
PPG Industries, Inc.; Mt. Zion, Illinois	SGCC-63	Unlimited size
Saint Gobain; France	SGCC-81	Unlimited size
Scanglas; Korsor, Denmark	SGCC-123	Unlimited size
Vidrierias De Llodio; Spain	SGCC-38	Unlimited size
Virginia Glass Products Corp.; Martinsville, Virginia	SGCC-12	Unlimited size

TEMPERED TRANSPARENT GLASS

7/32 inch tempered transparent glass

ASG Industries, Inc.; Greenland, Tennessee	SGCC-142	Unlimited size
ASG Industries, Inc.; Kingsport, Tennessee	SGCC-32	Unlimited size
C-E Glass; Miami, Florida	SGCC-77	Unlimited size
Fourco Glass Co.; Fort Smith, Arkansas	SGCC-35	Unlimited size
Guardian Industries Corp.; Fort Lauderdale, Florida	SGCC-39	Unlimited size
Guardian Industries Corp.; Torrance, California	SGCC-96	Unlimited size
Hamilton of Indiana; Vincennes, Indiana	SGCC-55	Unlimited size
PPG Industries, Inc.; Crestline, Ohio	SGCC-101	26 3/4" by 72"
PPG Industries, Inc.; Ford City, Pennsylvania	SGCC-66	Unlimited size
PPG Industries, Inc.; Fresno, California	SGCC-69	Unlimited size
PPG Industries, Inc.; Mt. Vernon, Ohio	SGCC-67	Unlimited size
PPG Industries, Inc.; Mt. Zion, Ohio	SGCC-68	Unlimited size
Saint Gobain; France	SGCC-80	Unlimited size
Vidrierias De Llodio; Spain	SGCC-37	Unlimited size
Virginia Glass Products Corp.; Martinsville, Virginia	SGCC-13	Unlimited size

1/4 inch tempered transparent glass

ASG Industries, Inc.; Greenland, Tennessee	SGCC-89	Unlimited size
ASG Industries, Inc.; Kingsport, Tennessee	SGCC-24	Unlimited size
C-E Glass; Atlanta, Georgia	SGCC-108	Unlimited size
C-E Glass; Houston, Texas	SGCC-137	Unlimited size
C-E Glass; Lancaster, Ohio	SGCC-146	Unlimited size
C-E Glass; Long Beach, California	SGCC-112	Unlimited size
C-E Glass; Miami, Florida	SGCC-49	Unlimited size
C-E Glass; Pennsauken, New Jersey	SGCC-53	Unlimited size
C-E Glass; Tampa, Florida	SGCC-47	Unlimited size
Fourco Glass Co.; Fort Smith, Arkansas	SGCC-34	Unlimited size
Glass Guard Industries, Inc.; Webster, Massachusetts	SGCC-105	Unlimited size
Guardian Industries Corp.; Carleton, Michigan	SGCC-131	Unlimited size
Guardian Industries Corp.; Fort Lauderdale, Florida	SGCC-40	Unlimited size
Guardian Industries Corp.; Millbury, Ohio	SGCC-130	Unlimited size
Guardian Industries Corp.; Torrance, California	SGCC-43	Unlimited size
Hamilton of Indiana; Vincennes, Indiana	SGCC-57	Unlimited size
Libbey-Owens-Ford Co.; Lathrop, California	SGCC-85	Unlimited size
Libbey-Owens-Ford Co.; Rossford, Ohio	SGCC-19	Unlimited size
PPG Industries, Inc.; Crestline, Ohio	SGCC-102	26 3/4" by 72"
PPG Industries, Inc.; Ford City, Pennsylvania	SGCC-70	Unlimited size
PPG Industries, Inc.; Fresno, California	SGCC-73	Unlimited size
PPG Industries, Inc.; Mt. Vernon, Ohio	SGCC-71	Unlimited size
PPG Industries, Inc.; Mt. Zion, Illinois	SGCC-72	Unlimited size
Virginia Glass Products Corp.; Martinsville, Virginia	SGCC-14	Unlimited size

TEMPERED TRANSPARENT GLASS

3/8 inch tempered transparent glass

ASG Industries, Inc.; Greenland, Tennessee	SGCC-90	Unlimited size
ASG Industries, Inc.; Kingsport, Tennessee	SGCC-30	Unlimited size
Guardian Industries Corp.; Fort Lauderdale, Florida	SGCC-41	Unlimited size
Guardian Industries Corp.; Torrance, California	SGCC-97	Unlimited size
Hamilton of Indiana; Vincennes, Indiana	SGCC-127	Unlimited size
PPG Industries, Inc.; Ford City, Pennsylvania	SGCC-74	Unlimited size
Virginia Glass Products Corp.; Martinsville, Virginia	SGCC-93	Unlimited size

1/2 inch tempered transparent glass

ASG Industries, Inc.; Greenland, Tennessee	SGCC-91	Unlimited size
Guardian Industries Corp.; Torrance, California	SGCC-98	Unlimited size
Hamilton of Indiana; Vincennes, Indiana	SGCC-128	Unlimited size
Libbey-Owens-Ford Co.; Rossford, Ohio	SGCC-150	Unlimited size
PPG Industries, Inc.; Ford City, Pennsylvania	SGCC-75	Unlimited size
Virginia Glass Products Corp.; Martinsville, Virginia	SGCC-94	Unlimited size

3/4 inch tempered transparent glass

ASG Industries, Inc.; Greenland, Tennessee	SGCC-143	Unlimited size
Libbey-Owens-Ford Co.; Rossford, Ohio	SGCC-151	Unlimited size
Virginia Glass Products Corp.; Martinsville, Virginia	SGCC-95	Unlimited size

TEMPERED PATTERN GLASS

1/8 inch tempered pattern glass

ASG Industries, Inc.; Kingsport, Tennessee	SGCC-141	Unlimited size
--	----------	----------------

3/16 inch tempered pattern glass

ASG Industries, Inc.; Kingsport, Tennessee	SGCC-33	Unlimited size
--	---------	----------------

210 inch tempered pattern glass

ASG Industries, Inc.; Kingsport, Tennessee	SGCC-31	Unlimited size
C-E Glass; Atlanta, Georgia	SGCC-125	Unlimited size
C-E Glass; Houston, Texas	SGCC-138	Unlimited size
C-E Glass; Lancaster, Ohio	SGCC-144	Unlimited size
C-E Glass; Long Beach, California	SGCC-113	Unlimited size
C-E Glass; Miami, Florida	SGCC-50	Unlimited size
C-E Glass; Pennsauken, New Jersey	SGCC-132	28" by 54"
Hamilton of Indiana; Vincennes, Indiana	SGCC-129	Unlimited size
Minex-Poland; Poland	SGCC-140	Unlimited size

7/32 inch tempered pattern glass

ASG Industries, Inc.; Kingsport, Tennessee	SGCC-25	Unlimited size
C-E Glass; Fullerton, California	SGCC-107	Unlimited size
Guardian Industries Corp.; Fort Lauderdale, Florida	SGCC-42	Unlimited size
Virginia Glass Products Corp.; Martinsville, Virginia	SGCC-92	Unlimited size

LAMINATED TRANSPARENT GLASS

<u>0.145 inch laminated transparent glass</u> Globe-Amerada Glass Co.; Elk Grove Village, Illinois	SGCC-87	34" by 40"
<u>SS/SS laminated transparent glass</u> Libbey-Owens-Ford Co.; East Toledo, Ohio	SGCC-23	Unlimited size
<u>SS/DS laminated transparent glass</u> Asahi Glass Co., Ltd.; Tokyo, Japan Libbey-Owens-Ford Co.; East Toledo, Ohio	SGCC-116 SGCC-22	Unlimited size Unlimited size
<u>7/32 inch laminated transparent glass</u> ASG Industries, Inc.; Kingsport, Tennessee Globe-Amerada Glass Co.; Elk Grove Village, Illinois Laminated Glass Corp.; Detroit, Michigan	SGCC-27 SGCC-45 SGCC-88	Unlimited size Unlimited size Unlimited size
<u>7/32 inch laminated transparent glass with 0.030 plastic</u> Dearborn Glass Co.; Bedford Park, Illinois	SGCC-147	Unlimited size
<u>1/4 inch laminated transparent glass</u> Asahi Glass Co., Ltd.; Tokyo, Japan ASG Industries, Inc.; Kingsport, Tennessee Libbey-Owens-Ford Co.; East Toledo, Ohio PPG Industries, Inc.; Creighton, Pennsylvania	SGCC-115 SGCC-26 SGCC-82 SGCC-114	Unlimited size Unlimited size Unlimited size Unlimited size
<u>1/2 inch laminated transparent glass</u> Libbey-Owens-Ford Co.; East Toledo, Ohio	SGCC-126	Unlimited size

TRANSPARENT WIRE GLASS

<u>1/4 inch polished wire glass</u> Asahi Glass Co., Ltd.; Tokyo, Japan ASG Industries, Inc.; Kingsport, Tennessee	SGCC-117 SGCC-86 (diamond)	Unlimited size Unlimited size
ASG Industries, Inc.; Kingsport, Tennessee	SGCC-121 (square)	Unlimited size
ASG Industries, Inc.; Kingsport, Tennessee	SGCC-122 (pinstripe)	Unlimited size
C-E Glass; Shawnee, Oklahoma	SGCC-79	Unlimited size
C-E Glass; St. Louis, Missouri	SGCC-100	Unlimited size

PATTERN WIRE GLASS

7/32 inch pattern wire glass

ASG Industries, Inc.; Kingsport, Tennessee

SGCC-103
(finetex pinstripe) Unlimited size

1/4 inch pattern wire glass

C-E Glass; St. Louis, Missouri

SGCC-106
(hammered square) Unlimited size

SAFETY PLASTIC SHEET

0.080 inch through 0.100 inch acrylic sheet

Flex-O-Glass, Inc.; Chicago, Illinois

SGCC-118 Unlimited size

0.080 inch through 0.125 inch acrylic sheet

K-S-H, Inc.; Xenia, Ohio

Plaskolite, Inc.; Columbus, Ohio

SGCC-136 Unlimited size
SGCC-152 34" by 72"

0.093 inch (and greater thicknesses) polycarbonate

Rowland Products; Kensington, Connecticut

SGCC-120 Unlimited size

0.080 inch through 0.187 inch Plexiglas K

Rohm and Haas Co.; Louisville, Kentucky

SGCC-154 Unlimited size

0.100 inch (and greater thicknesses) Plexiglas G

Rohm and Haas Co.; Knoxville, Tennessee

SGCC-153 Unlimited size

SAFETY PLASTIC SHEET FOR INDOOR USE ONLY

COMPLIES ONLY WITH "BREAK SAFE CHARACTERISTICS" OF ANS Z97.1-1972
(MUST NOT BE MARKED WITH ANS Z97.1-1972)

0.090 inch pattern plastic

Intercosmic Plastics, Division of ICP Industries, Inc.;
Miami, Florida

SGCC-17 Unlimited size
(for indoor use only)

Southern Plastics; Columbia, South Carolina

SGCC-18 Unlimited size
(for indoor use only)

0.100 inch pattern plastic

K-S-H, Inc.; Crestwood, Missouri

SGCC-99 Unlimited size
(for indoor use only)

SGCC LABEL REQUIREMENTS

The SGCC certification label must be permanently marked on each piece of safety glazing material or else it is not certified by SGCC. The typical labels reproduced in this certified products directory are the same size that you will find them on each piece of safety glazing material.

The permanent label must contain the name or trade mark of the participant.

The permanent label must contain ANS Z97.1-1972 or ANSI Z97.1-1972 except for safety plastic sheet for indoor use only (which does not comply with the U.V. requirements of ANS Z97.1-1972) in which case the label must include the wording "for interior use only" or "for indoor use only".

The permanent label must contain identification of the plant in which the product was made (the SGCC number does this by reference to this certified products directory).

The permanent label must be affixed to certified products only at the time and place of manufacture.

The permanent label must be affixed only to safety glazing materials of the participants' own manufacture, which has been certified by SGCC.

The permanent label must not be sold, transferred or otherwise disposed of in any manner other than being affixed to the participants certified production.

The permanent label must not be affixed to any product from which certification has been withdrawn or which is produced with a process basically different from the one used when certification was obtained.

The permanent label must have SGCC approval and acceptance prior to use.

* * * *

Asahi Glass Company, Ltd.
c/o Sentinel Enterprises, Inc.
2138 Biscayne Blvd.
Miami, Florida 33137



POLISHED WIRE GLASS
ASAHI GLASS
Wired Safety Glass
ANSI Z97.1-1972
SGCC 117 250-U

ASG Industries, Inc.
P.O. Box 88
Kingsport, Tennessee 37662

TRU-TEMP
TEMPERED
SAFETY GLASS
ANS Z97.1-1972
219 SDT U SGCC-31

Tentative label

C-E Glass
825 Hylton Road
Pennsauken, New Jersey 08110

ARM-R-CLAD
SAFETY TEMPERED
BM
GE GLASS
ANSI Z97.1-1972-250U
PENNSAUKEN,
N.J.
SGCC-53

Dearborn Glass Company
6600 South Harlem Avenue
Bedford Park, Illinois 60501

LAMINATED
SAFETY GLASS
D.G.C.
7/32U
A.N.S.I. Z97.1-1972
SGCC-147

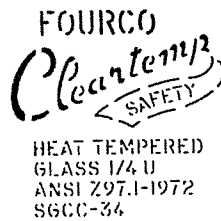
Feather-lite Manufacturing Company
21000 Hubbell Avenue
Detroit, Michigan 48237

FEATHER-LITE
SAFETY
PANE
TEMPERED SAFETY GLASS
USAS Z 97.1-1972
SGCC-II 3/16U 032

Flex-O-Glass, Inc.
1100 North Cicero Avenue
Chicago, Illinois 60651

FLEX-O-CRYLIC T.M.
SGCC-118
ACRYLIC SAFETY GLAZING
ANSI Z97.1-1972 .080U
FLEX-O-GLASS, INC.
CHICAGO, ILLINOIS 60651

Fourco Glass Company
P.O. Box 4147; Station B
Fort Smith, Arkansas 72901



Glass Guard Industries, Inc.
Box 817 Cudworth Road
Webster, Massachusetts 01570



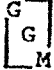
S.A. Glaverbel
c/o Veerman International Company
41 East 42 Street
New York, New York 10017

Tentative label

Glaverbel
GR - tempered 3/16"
ANS Z97.1-1972 188 U
SGCC-16

Globe-Amerada Glass Company
2001 Greenleaf Avenue
Elk Grove Village, Illinois 60007

Laminated Safety Glass

SGCC-45  218-U
ANS Z97.1-1972

Guardian Industries Corporation
127 North Campbell Avenue
Detroit, Michigan 48209

Tentative label



ANS Z97.1-1972
1/4 U

Hamilton of Indiana, Inc.
2000 Chestnut Street
Vincennes, Indiana 47591

TEMPER-TUF
HAMILTON OF INDIANA
ANSI Z97.1-1972 1/8U SGCC-54
TEMPERED SAFETY GLASS

Intercosmic Plastics
Division of ICP Industries, Inc.
7410 N.E. Third Court
Miami, Florida 33138

Tentative label

Intercosmic
Miami, Florida
(for interior use only)

SGCC-17 090U

K-S-H, Inc.
10091 Manchester Road
St. Louis, Missouri 63122

ANSI Z97.1 1972
KSH, INC.
.080 THRU .125 U
ACRYLIC
SGCC 136

Laminated Glass Corporation
355 West Lancaster Avenue
Haverford, Pennsylvania 19041

Laminated Safety Glass

SGCC-88  7/32-U
ANS Z97.1-1972

Tentative label



Tempered Safety Glass
ANS Z97.1-1972
3/16" U
SGCC-20

Libbey-Owens-Ford Company
811 Madison Avenue
Toledo, Ohio 43624

Tentative label

Minex-Poland
Tempered Pattern Glass
ANS Z97.1-1972
SGCC-140 210U

Minex-Poland
c/o M.L. Burke Company
33204 Western Avenue
Union City, California 94587

PPG Industries, Inc.
Rt. 20 at Ferry Street; Box 617
Creighton, Pennsylvania 15030

PPG HERCULITE K
ANSI Z-97.1-1972 3/16"-U
TEMPERED SAFETY GLASS
SGCC-62 11372

Plaskolite, Inc.
1770 Joyce Avenue
Columbus, Ohio 43219

plaskolite PL-G
SGCC-152
ANSI Z97.1-1972
.080 L TO .125 L
COLUMBUS, OHIO

Rohm and Haas Company
Independence Mall West
Philadelphia, Pennsylvania 19105

Tentative label
PLEXIGLAS G R & H CO.
ACRYLIC SAFETY GLAZING
ANSI Z97.1-1972 0.100U
SGCC-153

Rowland Products, Inc.
Fairview Lane
Kensington, Connecticut 06037

Tentative label
ROWLEX®
POLYCARBONATE SAFETY GLAZING
ANS Z97.1-1972 SGCC-120
093 U through 250 U

Saint Gobain
c/o Euroglass Corporation
551 Fifth Avenue
New York, New York 10017

Tentative label
SAINT-GOBAIN
SGCC-81 3/16" U
D U R F L E X
ANS Z97.1-1972

Scanglas A/S
c/o Interglass Corporation
240-28 Bayview Avenue
Douglas Manor, New York 11363

SCANGLAS

3/16" U TEMPERED
TRANSPARENT GLASS
ANS Z 97.1-1972
SGCC-123

Southern Plastics Company
P.O. Drawer 39
Columbia, South Carolina 29202

SOPLASCO 090 UPS
SGCC - 18
INTERIOR USE ONLY

Tentative label

TEMPERIT



7/32"U SGCC-37
tempered glass
ANSI Z97.1-1972

Vidrierias De Llodio, S.A.
c/o Seaply Glass Company
271 North Avenue
New Rochelle, New York 10802

Virginia Glass Products Corporation
P.O. Box 5431
Martinsville, Virginia 24112



American National Standard Performance Specifications and Methods of Test for Safety Glazing Material Used in Buildings

Performance Specifications and Methods of Test for Safety Glazing Material Used in Buildings, covers glazing material designed to reduce or minimize the likelihood of cutting and piercing injuries from human contact.

Z97.1-1972 endeavors to prescribe the functional properties of safety glazing materials in such a manner that they can be used any

place in buildings for which they possess the necessary characteristics.

Z97.1-1972 is also intended to serve as a basis for standards drafted by federal, state, and local regulatory bodies, as well as for reference by building officials and others in a similar capacity.

The Steering Committee of ANSI Z97, Safety Requirements for Architectural Glazing Material, recently adopted a statement con-

cerning administration of the standard's provisions.

According to the statement, "it is the intent of the Z97 Committee that the interpretation of ANSI Z97.1-1972 in its day-to-day application is the responsibility of those administering the standard in accordance with Section 5, which requires certification in accordance with ANSI Z34.1 (Practice for Certification Procedures)."

Individual copies of Z97.1-1972 are priced at \$3.50.

† **Z97.1-1972 Safety Glazing Material Used in Buildings, Performance Specifications and Methods of Test for**..... 3.25

***Members' Discount Applies**

Establishes specifications and methods of test for safety glazing material (glazing material designed to promote safety and to reduce or minimize the likelihood of cutting and piercing injuries from human contact) as used for all building and architectural purposes.

Revision of Z97.1-1966

ORDER FROM:

AMERICAN NATIONAL STANDARDS INSTITUTE
1430 BROADWAY
NEW YORK, NEW YORK 10018

SGCC Board of Directors:

Norman Nitschke, Glasstech, Chairman
Thomas C. Carson, ASG Industries
Robert W. McKinley, PPG Industries
Phil Dykstra, National Safety Council
Dick Sanderson, BOCA International
Herbert Wiltsee, Council of State Governments

SGCC Officers:

Norman Nitschke, President
Al V. Bartosic, Vice President
Henry E. Walker, Vice President
Phil Dykstra, Secretary
Shirley Stafford, Assistant Secretary
Robert L. Brown, Treasurer

SGCC Certification Committee:

Donald J. Vild, Chairman
Leonard Bogen, Southern Plastics
Robert L. Brown, Virginia Glass Products
Paul F. Burnham, Jr., Asahi
Thomas C. Carson, ASG Industries
Delbert L. Christensen, Flex-O-Glass
Thomas Coyne, Guardian
Phil Dykstra, National Safety Council
Hugh R. France, C-E Glass
Avery C. Fried, Feather-lite
Bill Korn, K-S-H, Inc.
Martin W. Lerner, Laminated Glass
Richard T. McGuire, PPG Industries
Dick Miller, Globe-Amerada
Norman Nitschke, Glasstech
Miquel De Rancogne, Saint Gobain
Dick Sanderson, BOCA International
Joseph L. Solomon, Glass Guard Industries
Gary L. Tate, Hamilton
Henry E. Walker, Fourco Glass Company
Herbert Wiltsee, Council of State Governments

SGCC Certification Program Administrator:

Robert A. Nance, P.E., CSC

Legal Counsel:

Samuel Steen, Esq.

Auditor:

Blackie Hunter, CPA

PROCEDURAL GUIDE

SAFETY GLAZING CERTIFICATION COUNCIL CERTIFICATION PROGRAM FOR SAFETY GLAZING MATERIALS USED IN BUILDINGS

FORWARD

Acceptance of a certified product containing safety glazing materials comes with the conviction that such certification assures a high level of safety and quality and that the integrity of the identifying mark or certification label is being reliably maintained by a competent certifying agency.

The provisions of American National Standard Z97.1, provide a sound technical basis for the required high level of safety. With the addition of independent administration plus periodic routine sampling and product evaluation, a program of product certification is developed in accordance with the accepted American National Standards as contained in American National Standard Z34.1. The Certification Program described here is predicated upon the concept of independent and impartial administration of the certification procedures which are incorporated in the SGCC license agreement.

To insure administration of the Certification Program in a uniform and equitable manner, this Procedural Guide has been prepared for the information and guidance of the participants.

It should be noted that the *SGCC License Agreement* is the governing document for operation of the Certification Program. This Procedural Guide, which *is not* an extension of that document, serves merely to describe the administrative procedure and routine operation of the Certification Program.

GENERAL INFORMATION

The Certification Concept

The SGCC Certification Program is based on the conviction that no standard of safety or quality is good without the *continuous adherence of the participants* to that standard.

To buyers, specifiers, code officials and users, the SGCC certification label offers the manufacturer's *assurance* that his safety glazing material has been *produced in conformance* to American National Standard Z97.1, covering safety glazing materials used in buildings.

Many state laws, municipal ordinances and building codes require that all glazing installed in certain pre-defined *hazardous* locations comply with the ANSI standard. This standard, promulgated by the American National Standards Institute, *requires* certification in accordance with ANS Z34.1, prior to labeling safety glazing materials as conforming to ANS Z97.1.

Who Can Participate?

Every manufacturer of safety glazing materials is eligible, *on a voluntary basis*, to participate.

Who Conducts the Program?

The Safety Glazing Certification Council, a non-profit corporation, is the sponsor of this certification program. SGCC supervises the certification program under which the Administrator periodically checks and reports compliance of the manufacturers of products having the SGCC certification label with the requirements of ANSI Z97.1.

Administration

Certification Services Corporation (CSC), is the independent *Administrator* of the Certification Program. CSC maintains the SGCC Office Of Certification and handles the routine day to day business. All transactions are done in the name of SGCC.

How Can You Become a Participant?

The following must be accomplished before SGCC can certify an item of safety glazing material:

- a) The manufacturer signs two copies of the SGCC License Agreement (including notarization of the Affidavit, Appendix A) and sends these to SGCC. SGCC will countersign both copies and return one to the manufacturer.
- b) The manufacturer sends to SGCC one copy of a valid test report from an official SGCC-recognized testing laboratory indicating full and complete compliance with the Specifications, *namely ANS Z97.1*. (This is the "initial" or "prototype" testing and the sample is furnished by the manufacturer directly to any one of the SGCC-recognized independent commercial testing laboratories, which the manufacturer selects).
- c) The manufacturer sends to SGCC, the six-month certification fee *for each item which is to be certified*.
- d) The manufacturer sends to SGCC a *black on white* copy of his proposed permanent label.

After receipt of *all* of the above four items, SGCC sends to the participant a Notice of Product Certification which includes a SGCC Certification Number. This number *must* be incorporated into the permanent label to be affixed on each piece of certified safety glazing material. The certified item will then be listed in the next published Certified Products Directory.

HOW THE CERTIFICATION PROGRAM WORKS

The *American National Standards Institute* sets safety standards and safety glazing materials *must meet or exceed* applicable ANSI standards before they can be certified by SGCC. Specifications for safety glazing materials used in buildings are developed and reviewed at least every five years by ANSI.

SGCC-Recognized Independent Testing Laboratories conduct all tests. All laboratories, whose test reports are utilized by this Certification Program shall be approved by the SGCC Certification Committee. Initial or prototype tests are performed at the testing laboratory selected by the participant. Routine evaluation samples are tested by the testing laboratory selected by the Administrator.

Administrator Authorizes Certification

As sole judge of compliance with applicable standards, the Administrator authorizes a product which has been approved to be listed in the Certified Products Directory.

Participants Label Safety Glazing Material within the limits of the product size tested. If 34" by 76" is the initial or prototype test size, then certification is extended to all sizes and the label contains a letter U, designating such unlimited size. The letter L, contained within the label, denotes that certification is limited to the width and length of the initial or prototype test size.

Products Listed in Certified Products Directory

Approved products are listed in the Certified Products Directory, which is published at least every six months. It is sent to door, sash and building products manufacturers, glazing contractors, home builders, architects, regulatory agencies and code-making groups, etc. Directory listings contain the participants name, plant location, product description and a copy of the actual label that is *permanently* marked upon each piece of certified safety glazing material.

The Administrator Samples Certified Safety Glazing Material from the participants' inventory once every six months.

An Approved Testing Laboratory Determines Compliance of these samples with the Specifications. Tests are made either at the place of manufacture or at the laboratory selected by the Administrator from the approved list. Results of each test are mailed promptly to the participant and to the Administrator.

COMPLIANCE SAFEGUARDS

How is Compliance Assured?

Any certified product found in the course of routine sampling and evaluation not to be in compliance with the Specifications, is subject to having certification removed. The participant is given a 30-day grace period in which to demonstrate to the satisfaction of the Administrator that his product is in compliance. If he does not, certification is *automatically terminated* at the end of the 30-day period.

Challenging a Certified Product

Complaints of non-compliance from any source will be investigated promptly by SGCC upon receipt of the complaint in writing along with an appropriate surety deposit. A minimum surety deposit of \$1,000 will be required for each complaint of non-compliance. The surety deposit

will be assessed at the rate of \$150 per man day *plus* the reasonable costs of travel and maintenance entailed in resolving such incidents. Refunds of part or all of the surety deposit will be made when applicable. All costs involved will be paid from the complaintants' surety deposit, *unless* the investigation proves non-compliance, *in which case all costs will be borne by the participant found to be in non-compliance.*

Withdrawal of Certified Product

Any product which has been certified may be voluntarily withdrawn from the Certification Program by the participant at any time.

COSTS

What Does The Program Cost?

The participant pays all projected fees to SGCC on a six-months basis, in advance. A participant is invoiced for each item that is certified and listed separately in the Certified Products Directory. The invoice will include the fees to be paid to the Testing Laboratory by SGCC for future routine evaluation testing.

Initial certification for each item will be for a period of six months. However, the next invoice to a participant will have the fees prorated to the nearest whole month in such a manner that participation in the Certification Program will be on January 1 to July 1 and July 1 to January 1 basis.

Program Costs:

- \$350 per six months for the first product at a plant.
- \$50 per six months for each additional product at the same plant.
- \$50 (estimated testing costs) per six months per product.

Distribution of Fees:

- \$12.50 per six months from each product to SGCC for administrative expenses.
 - \$337.50 per six months from the first product at each plant to CSC.
 - \$37.50 per six months from each additional product at the same plant to CSC.
- All testing fees are paid directly to the Testing Laboratory by SGCC.

CERTIFICATION PROGRAM DOCUMENTS AND AGREEMENTS

License Agreement

This agreement, incorporating independent program administration and routine, periodic, independent, sampling and evaluation, governs the relationship between SGCC and the participant.

Future Amendments or Revisions to the License Agreement will be recommended by the SGCC Certification Committee and enacted by the SGCC Board of Directors.

Effective Date, Duration and Termination

The License Agreement becomes effective on the date of its execution; has an initial duration of six months (adjustable to a January 1 to

July 1 and a July 1 to January 1 basis), and is automatically renewed for successive, additional periods of six months, unless either party gives notice at least sixty days prior to the date of expiration that cancellation is requested or unless revoked by SGCC for causes set forth in the document.

Administration Service Agreement

This agreement, entered into by SGCC and Certification Services Corporation, governs the relationship between SGCC and CSC, the independent Administrator. In general, it provides that the Administrator:

- a) samples certified products routinely
- b) has the right to witness any and all testing
- c) reviews all test reports in order to determine compliance of the certified product with the Specifications
- d) inspects and approves all in-plant and Test Laboratory test facilities for use in this Certification Program (Test Laboratories are "recognized" or approved by the SGCC Certification Committee)
- e) publishes and mails the SGCC Certified Products Directory on or about each January 1 and July 1
- f) handles all routine clerical duties of SGCC with respect to certification matters
- g) acts as SGCC treasurer, invoicing participants, maintaining a bank account and dispersing funds (quarterly fiscal reports are made to the SGCC Certification Committee)
- h) contracts for testing with approved Test Laboratories
- i) attends all scheduled meetings of the SGCC Certification Committee and
- j) in all of its actions, acts in the name of SGCC.

Procedural Guide

This guide outlines program procedures in accordance with the provisions of the License Agreement and the Administration Service Agreement, for the guidance of those concerned with the procedural details of the Certification Program's operation. It covers the steps to be taken in any given procedural situation in the interest of equitable and uniform treatment of participants and the preservation of the integrity of the Certification Program.

Certified Products Directory

This directory is the one document and publication that is normally in

the public's eye and contains a listing of the certified safety glazing materials of each participant.

Certification Label

This Certification Mark is permanently affixed to each piece of certified safety glazing material by the participant. It contains a code that refers to the listing in the Certified Products Directory. The listing then provides a complete product description including the company name, plant location, etc.

PROGRAM RESPONSIBILITY

The *SGCC Board of Directors* has overall responsibility for the well being and acceptance of the Certification Program by the industry, building officials and the public. It also bears legal corporate responsibility.

The *SGCC Certification Committee* has the responsibility for the general procedure and policy pertaining to operation of the Certification Program. As a part thereof, it:

- a) establishes certification "guidelines"
- b) determines the applicability of the Specifications in a specific situation where a question is raised by a participant or the Administrator
- c) approves Test Laboratories
- d) determines which of the Specifications are to be designated effective for the purposes of product certification and the date or dates on which they become effective
- e) recommends to the SGCC Board of Directors, changes to be made in the License Agreement

Communications

SGCC Board of Directors
Mr. Norman C. Nitschke, Chairman
Glasstech, Inc.
926 Dearborn Avenue
Toledo, Ohio 43605
Phone: 419-849-2923

SGCC
Mrs. Shirley Stafford, Asst. Secy
1640 West 32 Place
Hialeah, Florida 33012
Phone: 305-822-1141

SGCC Certification Committee
Mr. Donald J. Vild, Chairman
c/o Libbey-Owens-Ford Company
1701 East Broadway
Toledo, Ohio 43605
Phone 419-242-5782

SGCC
Mr. Robert A. Nance, P.E.
Administrator of Certification
1640 West 32 Place
Hialeah, Florida 33012
Phone: 305-822-1141

CERTIFICATION GUIDE LINES AND INTERPRETATIONS

For guidance in certifying safety glazing materials the SGCC Certification Committee has adopted the following:

1. Certification of any nominal thickness of tempered safety plate, float or sheet glass will also cover the other two types. ANS Z97.1 does not require the permanent trademark on tempered safety glass to specify which type of glass is used nor is it required that the test specimens be identified in this regard. Similarly laminated safety glass need not be identified by type of base glass.

Since the minimum allowable thickness in Federal Specification DD-G-451c is different for plate/float and sheet glass of equal nominal thickness, SGCC may not in all cases be able to certify the glass tested meets this specification. When this situation arises, the participant upon the request of SGCC must furnish a statement indicating all plate/float and sheet of his manufacture meet the thickness requirements of Federal Specification DD-G-451c. Wired glass can be checked by SGCC for thickness compliance.

2. Certification of regular tempered or laminated glass will also cover tinted, heat absorbing and coated glasses of the same nominal thickness.

3. Certification of one patterned glass will also cover similar patterns of the same nominal thickness. The participant shall furnish to SGCC Certification Committee 6" by 6" samples of each type of patterned glass he wishes included in each group. These will be reviewed by the Certification Committee to evaluate their similarity to the pattern tested.

4. Certification of one wired glass will apply to other wired glasses providing: a) the glass thickness is nominally equal to that for the samples tested and b) the wire diameter is at least as great as for the samples tested. Additionally, 6" by 6" samples of all wired glass which the participant wishes to be certified shall be submitted to SGCC Certification Committee. These will be reviewed by the Certification Committee to evaluate their similarity to the wired glass tested. When a particular wired glass is suspect, initial compliance to ANS Z97.1 will be required. Subsequent retesting for compliance may be for any approved wired glass.

5. Certification of either flat glass or patterned glass will not cover the other except as noted in guide line 6. (Flat glass designates ground and polished plate, float and sheet glass.)

6. Polished plate glass and the rough plate glass blank from which it is produced will be considered to be of equal nominal thickness. Certification of tempered flat glass will therefore be interpreted as including tempered rough plate blank.

7. When a laminated glass is certified, other laminated glasses having the same thickness or thicknesses of glass and a greater thickness of plastic interlayer will be considered to be of equal nominal thickness and to be included in the certification.

8. Tests for initial compliance of safety glazing with ANS Z97.1 will be accepted from Electrical Testing Laboratories, Inc., Miami Testing Laboratory, Inc., Twining Laboratories of Southern California, Inc., or other testing laboratory subsequently approved by the SGCC Certification Committee.

9. Paragraph (3) section 4.1.3 of ANS Z97.1-1972 is intended to apply to plastics only and not other safety glazing materials.

10. In cases where routine evaluation samples fail to comply with the Specifications:

a) Within 30 days participant must submit samples to the Administrator that comply with the Specifications or certification of this product will be withdrawn (as provided in the license agreement).

b) Within 3 months the Administrator shall obtain an additional random sample for evaluation (in addition to the routine evaluation sample obtained at least twice a year). The costs involved shall be paid by the participant.

c) The Administrator shall be certain that the sample obtained in b) above is of recent production.

11. In cases where a certified item is produced infrequently or in small quantities so as to make it difficult for the Administrator to obtain routine evaluation samples, the participant shall notify the Administrator at least two weeks in advance of any production of such item.

12. Any type of safety glazing material that is laminated; including those with a sprayed on coating and those with an applied sheet material, must comply with the requirements of paragraph 4.2 of the ANS Z97.1-1972 (boil test).

13. Sheet plastic for interior use only do not have to comply with paragraph 4.3 of the ANS Z97.1-1972 (U V Weathering).

14. Sheet plastics for exterior use must comply with paragraph 4.3 of the ANS Z97.1-1972 (U V Weathering).

15. Certified and permanently labeled safety glazing materials such as laminated glass, wired glass and rigid plastic may be cut into smaller pieces by a distributor or installer after manufacture and it is not practical for each such smaller piece to bear a manufacturers' permanent label when finally installed in a building. When this is the case, then the distributor or installer shall apply a permanent label to each piece, which states his name and certifies that he cut the piece from material that was properly labeled in accordance with the requirements of SGCC.

For the purpose of this guide line, a permanent label is defined as one that will remain permanently legible and would be destroyed in attempts to remove it from the product.

16. Delisting procedures for certified products shall be as follows:

When routine evaluation samples (or additional random samples, see SGCC GL 10) fail to comply with the Specifications:

a) Written notice is sent to the participant by the administrator.

b) Within 30 days participant must submit samples to the administrator that comply with the Specifications.

c) Written notice of removal of certification is issued to the participant by the administrator if the samples are not received within the allotted 30 days or if the samples submitted fail to comply with the Specifications.

17. If a participant who manufactures a certified product outside the 48 contiguous States feels that in a particular instance that he will be unable to act as provided for in paragraph b) of SGCC guide line 16, he should notify the administrator. The administrator will then contact the chairman of the certification committee for a decision as to what action is to be taken.

18. The administrator shall remove certification from all of any participants products for failure to pay any monies due to SGCC within 30 days of invoice date. (Reference License Agreement A.2, A.12, and B.6.
19. Specimen sizes up to 34 inches by 77 inches shall be valid samples when independently obtained by the administrator for purposes of routine evaluation.
20. In cases where the administrator samples and identifies specimens for routine evaluation on the participant's premises:
 - a) The participant be permitted 6 weeks in which to effect delivery of said specimens to the administrator's designated testing laboratory.
 - b) Failure to act as specified above shall be construed by the Administrator as failure of the said specimens to comply with the specifications and the administrator shall act as provided for in License Agreement A.6.
21. Participation in the certification program will be on a January 1 to July 1 and July 1 to January 1 basis. Charges will be prorated to the nearest whole month based on the date of approval for certification.
22. The SGCC Certified Products Directory shall be reissued and distributed every six months (about January 1 and July 1) or more often - 1) at the request of the majority of the Certification Committee, 2) at the request of an individual participant, or 3) at the direction of the Board of Directors. When an individual participant requests the additional mailing, he will be charged the entire cost. Distribution at present is to all FHA field offices and all AAMA member companies. Each participant is requested to submit additional names for mailing.
23. After initial compliance with a sample size as stated in Table 1, testing of other sizes which represent the sizes manufactured may be allowed, provided however that all sizes produced up to the size provided by Table 1, ANS Z97.1-1972 are exposed to selection for testing.
24. Certification of one tint or color of rigid plastic will also cover other tints or colors of the same nominal thickness.
25. Certification of one patterned rigid plastic will also cover similar patterns of the same nominal thickness. The participant shall furnish to SGCC Certification Committee 6" by 6" samples of each type of patterned plastic he wished included in each group. These will be reviewed by the Certification Committee to evaluate their similarity to the pattern tested.
26. For certification purposes the nominal thickness of 210 tempered pattern glass shall be 0.210 inches and thickness tolerances shall be plus 0.031 inches and minus 0.016 inches.
27. For certifying all plastics covering a range of thicknesses prototype impact tests are required of the minimum thickness and also of the maximum thickness (except that 0.250 inch thickness would be tested if the maximum thickness exceeds 0.250 inches). Only one certification number will be issued and shall be marked upon all thicknesses. Routine re-evaluation samples are to be selected by the Administrator from any of the certified thicknesses.
28. For all plastics requiring UV weathering tests an infra red spectrogram shall be obtained of all prototype weathering specimens. An infra red spectrogram shall be obtained of all routine re-evaluation samples and shall be compared with that of the prototype in lieu of conducting weathering tests.

**CONSUMER
SAFETY
GLAZING
COMMITTEE**



1000 Connecticut Ave., N.W., Suite 401 ■ Washington, D.C. 20036 ■ Area Code 202/296-1662

July 3, 1972

CONSUMER SAFETY GLAZING COMMITTEE
STATUS REPORT

By W. Jeff Keirns, Chairman

MODEL BUILDING CODES

The Southern Standard Building Code, the Basic Building Code, and the Uniform Building Code have adopted upgraded glass safety requirements; and these appear in the 1969 or 1970 editions of the respective codes.

ONE AND TWO FAMILY DWELLING CODE

This is a model building code, specifically for 1 and 2 family dwellings, developed by a joint effort of all three of the model building codes and the American Insurance Association.

SPONSORING ORGANIZATIONS:

International Brotherhood of
Painters and Allied Trades, AFL-CIO

Flat Glass Marketing Association

National Glass Dealers Association

PPG Industries, Inc.

Architectural Aluminum
Manufacturers Association

Glass Tempering Association

Home Conference-
National Safety Council

ASG Industries, Inc.

Libbey-Owens-Ford Company

Rohm and Haas Company

C-E Glass Company

Amerada Glass Company

Bureau of Community
Environmental Management (Injury
Control), U.S. Public Health Service

Mobay Chemical Company

Fourco Glass Company

Sealed Insulating Glass
Manufacturers Association

General Electric Company
Plastics Department

A section on glass, including a section on safety glazing in areas subject to accidental human impact is included.

STATE BUILDING CODES

1. Mandatory State Codes

Six states have mandatory state codes: Indiana, North Carolina, Ohio, Wisconsin, California and Connecticut. All except Wisconsin include safety glazing requirements in their codes.

Wisconsin is in the process of updating its code.

2. Special State Regulations

New York has adopted Rule No. 47 relating to "Transparent Glass Doors in Mercantile Establishments and in Public and Commercial Buildings and Structures"

Maryland has adopted Regulations 43HO4 relating to "Transparent Glass Doors in Mercantile Establishments and in Public and Commercial Buildings and Structures"

SAFETY GLAZING LEGISLATION

California - Assembly Bill No. 399 became law. Effective date Nov. 1970. This was amended by Senate Bill No. 601 which became effective Nov. 1971.

Colorado - House Bill 1110 became law. Effective date July 1, 1971.

Delaware - Senate Bill No. 23 became law. Effective date Jan. 1, 1972.

Florida - House Bill No. 214 became law effective July 1, 1969. An amended version, Senate Bill No. 417, was passed by the legislature and became effective July 1, 1970.

Georgia - House Bill 412 became law. Effective date, July 1, 1970.

SAFETY GLAZING LEGISLATION (continued)

- Hawaii - House Bill No. 379 became law. Effective date May 28, 1971.
- Illinois - Senate Bill No. 101 became law. Effective date Jan. 1, 1972.
- Kentucky - House Bill 353 became law. Effective date Jan. 1, 1971.
- Maryland - Senate Bill No. 317 became effective July 1, 1969. House Bill 797 providing up-grading amendments to SB317 was passed and signed by the Governor. Effective date, July 1, 1971.
- Massachusetts - Senate Bill No. 1401 became law. Effective date April 1, 1972. House Bill No. 5324 extended effective date to Jan. 1, 1973.
- New Jersey - Assembly Bill No. 496 became law. Effective date Mar. 28, 1972.
- New York - Assembly Bill 11456 - Senate Bill 9580 - passed by legislature April 28, 1972 - awaits Governor's signature. Effective date, July 1, 1973.
- Ohio - House Bill No. 9 became law. Effective date July 1, 1972.
- Oklahoma - House Bill No. 1350 became law. Effective date Jan. 1, 1972.
- Oregon - House Bill 1771, and the regulations developed by the Public Health Department, became law effective July 1, 1970.
- Pennsylvania - Senate Bill No. 29 became law. Effective date Jan. 1, 1972.
- Tennessee - Senate Bill No. 178 became law. Effective date Jan. 1, 1972.
- West Virginia - House Bill No. 504 became law. Effective date July 1, 1971.

FHA MINIMUM PROPERTY STANDARDS

In July, 1969, FHA issued Interim Revision No. 45 revising those sections of the Minimum Property Standards for 1 and 2 Family Dwellings dealing with the glazing requirements for sliding glass doors, storm doors, tub enclosures and shower doors and fixed-glazed panels adjacent to entrance or exit doors.

Also issued was Revision No. M-13. This revision imposes in Multi-Family Housing the same requirements that Revision No. 45 requires for 1 and 2 Family Dwellings.

The two revisions require use of only safety glazing material in all sliding glass doors, tub enclosures and shower doors. Safety glazing materials must also be used in storm doors and those fixed panels adjacent to entrance doors unless the glazing is protected by substantial grilles on both sides up to a height of 42 inches from the floor level.

MOBILE HOME STANDARDS

The American National Standard ANSI-A119.1, sponsored by the Mobile Home Manufacturers Association, has been adopted by 28 states through legislative enactment. Thus, these states have accepted this ANSI standard as the code for mobile homes.

The 1971 edition of this standard incorporates safety glazing requirements for glazings in "hazardous locations".

INDUSTRIALIZED HOUSING LEGISLATION

The following states have enacted legislation for building inspection codes for factory-built housing. Some or all incorporate safety glazing requirements for glazing in "hazardous locations".

California	Hawaii	New York	South Carolina
Colorado	Indiana	North Carolina	Virginia
Connecticut	Maine	Ohio	Washington
Florida	Maryland	Oklahoma	West Virginia
Georgia	Minnesota	Oregon	

PUBLIC INFORMATION
Department



NATIONAL SAFETY COUNCIL
425 North Michigan Avenue
Chicago, Illinois 60611
Phone 527-4800
Area Code 312

June, 1972

Dear Program Director:

Most public service spots you receive deal with problems. Most contain good advice given by interesting people who may ... or may not ... have a personal involvement with the "cause" they represent.

Here's a 60-second PSA on the use of safety glazing materials. It contains good advice from someone who is deeply involved because of an accident that happened to her. Fortunately, Della Reese lived to tell about it.

We think this spot is particularly suitable during seasons in which glass doors are in frequent use.

Della volunteered her services and the cost of production was covered by a grant from the Consumer Safety Glazing Committee*.

We hope you'll use it frequently. If you can't use it, please offer it to a neighboring station or return it. Please return the postage-paid reply card. Your comments, whatever they are, are wanted.

Sincerely,

Ed Van Natta

Ed Van Natta
Director
Radio-TV Services

"DELLA REESE - GLASS SAFETY"
* 1000 Connecticut Ave., N.W.
Washington, D. C. 20036



PUBLIC INFORMATION DEPARTMENT

(312) 527-4800

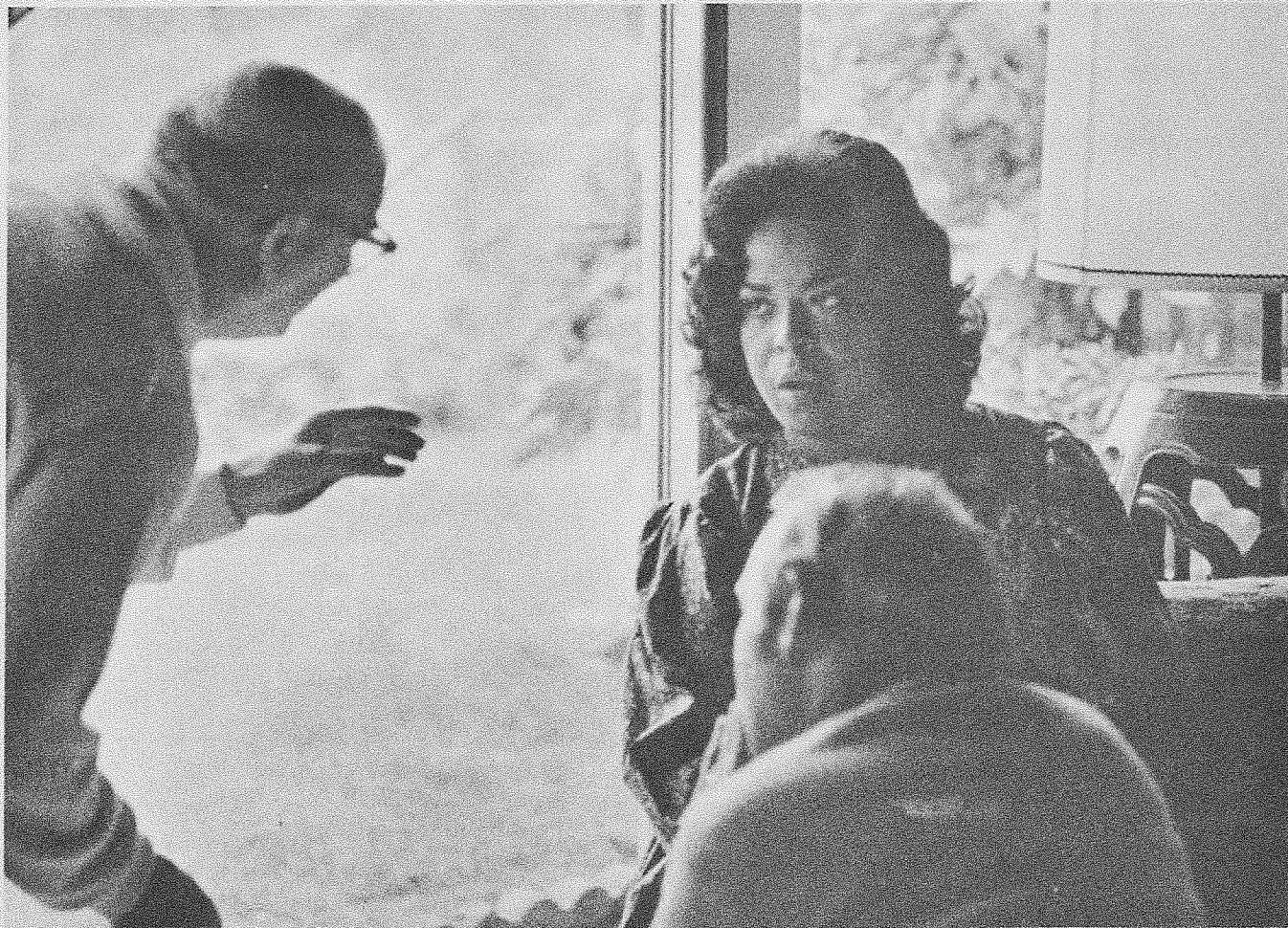
CONTACT: ED VAN NATTA

TV COPY

"DELLA REESE -- GLASS SAFETY"

60-second public service spot

Background: In September 1970, Della Reese fell through an unmarked sliding glass door. It was not glazed with a safety glazing material. Her injuries were immediate and severe. Della's young daughter ran for a neighboring doctor. Nevertheless, Della nearly lost her life. Recovery included more than four hours on the operating table, seven pints of blood, 1,000 stitches, one month in intensive care, and about five months in and out of a hospital bed. She tells her story calmly, informatively and with warm believability.....



DELLA REESE TELLS IT LIKE IT WAS

A 50-50 chance to live, seven pints of blood, 1,000 stitches, five hours on the operating table, five months in bed. That was the price paid by singer Della Reese for walking into a sliding glass door—an accident that causes an estimated 250,000 injuries every year. In

the photo above, she discusses a scene in a National Safety Council TV spot with NSC's home safety director Phil Dykstra. Perhaps you'll see the public service spot as Della encourages the use of safety glazing—now required by many state laws.

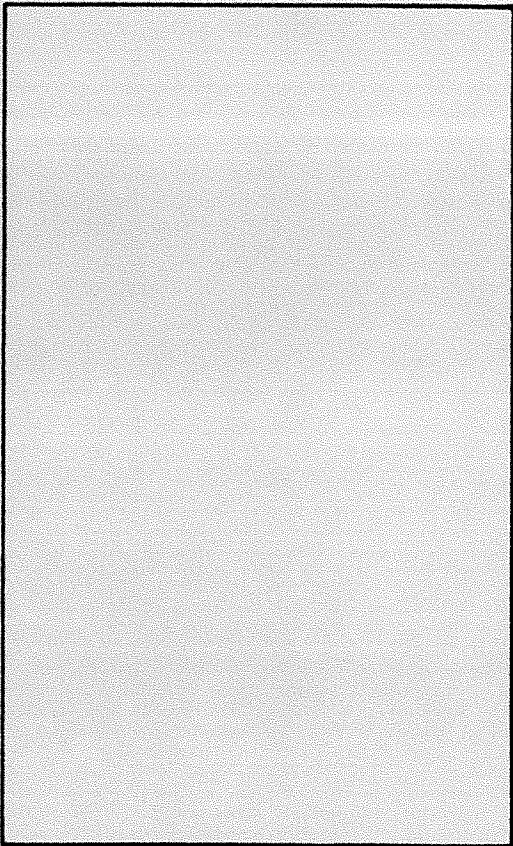
future editions of this certified products directory
will be sent to individuals making a request on their
corporate letterhead.



safety glazing certification council

1640 west 32 place
maitland, florida 33072

to



THIRD CLASS MAIL