

JULY 1, 1977



safety glazing certification council

certified products directory
safety glazing material used in buildings

TABLE OF CONTENTS

Program Concept	page 4
Meetings this year	page 5
Membership Roster	page 6
Board of Directors	page 7
Certified Products (Numerically)	page 8
Certified Products (By Plant)	page 10
Pattern Glass Classification	page 20
Certified Products (By Product)	page 21
SGCC Label Requirements	page 30
Participants and their Typical Labels	page 31
Participants without a certified product	page 38
Procedural Guide	page 39
Communications	page 44
SGCC Approved Laboratories	page 45
Guidelines for Certification	page 46
ANSI Z97.1-1975	page 50

© Safety Glazing Certification Council, 1977

July 1, 1977; SGCC 3

PROGRAM CONCEPT

The safety of the public is paramount. Manufacturers of safety glazing products, building code administrators and others responsible for the safety of the public, recognizing the need for a common standard for safety glazing materials, jointly established the Safety Glazing Certification Council (SGCC).

The Safety Glazing Certification Council is a non-profit organization which has established and maintains a program to administer periodic testing as outlined in American National Standard Z97.1-1975, an internationally recognized standard for safety glazing in buildings. This standard subjects glazing materials to a practical test to determine that if they are broken by human contact, they break in a manner that would minimize the likelihood of cutting or piercing injury. SGCC's responsibilities are threefold: to assure a periodic testing program is maintained; to approve and register the form of the manufacturer's label; and to withdraw the manufacturer's authority to use that label if its products do not meet ANSI Z97.1-1975 standards.

Management and control of the program is vested in a board of directors, half representing industry and half representing public interest. The public interest representatives are empowered to veto any action regardless of the number present at a meeting. This insures against industry dominance of SGCC actions. The organization is operated in compliance with the American National Standard Practice for Certification Procedures Z34.1-1947 (R1959).

The program uses independent testing laboratories under the supervision of a qualified administrator, who is a professional engineer. He is unaffiliated with any manufacturer of safety glazing materials, and is hired by and responsible to the Safety Glazing Certification Council. The manufacturer of the products listed herein has certified that the labeled materials comply with the safety characteristics established by ANSI Z97.1-1975. The compliance of the manufacturer with the requirements of that standard is being checked periodically by an independent testing laboratory under the supervision of SGCC.

Every manufacturer of safety glazing material is eligible and encouraged to apply for certification. However, his products are not accepted and certified until an independent laboratory test indicates compliance with the standard. Once certified, each product is assigned an SGCC certification number to identify it and the factory at which it is made. Then, at least twice a year SGCC independently selects samples during unannounced visits to the manufacturing plant or randomly from the market place to ensure continued adherence to the standard. Based on these re-evaluation reports SGCC authorizes continued use of the certification label and the product listing published in this directory.

The directory is divided into three basic listings: the first is by numerical sequence of certified product numbers listing the manufacturer holding that number; the second is of manufacturers listed alphabetically by plants and the approved products manufactured at those plants; the third is by products listing all manufacturers and their plants approved for each product. There is also an alphabetical listing by manufacturers illustrating a typical label of that manufacturer. The table of contents lists various procedural and administrative information, as well as information as to where officers and directors may be located.

Information from SGCC concerning a statement of procedures or copies of the minutes are available to manufacturers, public interest groups and individuals upon request.

MEETINGS OF THE CERTIFICATION COMMITTEE

The Certification Committee of the Safety Glazing Certification Council met on April 27 and 28 during 1977. Interested persons may obtain minutes of these meetings by writing to the Safety Glazing Certification Council.

* * * * *

Certification in this directory is up-to-date as of July 1, 1977; however, products may be certified or certification removed from time to time. Please contact the SGCC office for the latest up-to-date information.

Requests for future copies of this directory, or any questions or comments should be directed to:

Mr. Robert A. Nance, P. E.
Administrative Manager
Safety Glazing Certification Council
1640 West 32 Place
Hialeah, Florida 33012
Telephone 305-558-1352

ROSTER

April, 1977

BOARD OF DIRECTORS

Representing Public Interest

Mrs. Jean Cornwell, Consumer
 Phil Dykstra, National Safety Council
 Richard C. Elstner, Wiss, Janney and Elstner
 Mrs. Sylvia Lav, Consumer
 Joseph E. Minor, Texas Tech University
 Orville L. Pierson, Consumer
 Lynford K. Snell, Federal Housing Admin.

Representing Industry

Thomas C. Carson, ASG Industries
 Homer H. Goldsberry, Rotuba
 George L. Graf, Jr., du Pont
 Richard L. Morrison, Ford Motor, Chairman
 Norman Nitschke, Glasstech
 Caryl E. Twitchell, Three M
 Donald J. Vild, Libbey-Owens-Ford

SGCC Officers

Richard L. Morrison, President
 Orville L. Pierson, Vice President
 Richard C. Elstner, Secretary
 Shirley Stafford, Assistant Secretary
 Thomas C. Carson, Interim Treasurer

SGCC CERTIFICATION COMMITTEE

Gene Gilbert, Chairman

Licensee

ASG Industries
 Armour Laminated
 Buchmin Industries
 M. L. Burke
 C-E Glass
 Canadian Pittsburgh
 Central Glass
 Chromalloy-Safetee
 Downey Glass
 Falconer Plate Glass
 Feather-lite
 Flex-O-Glass
 Ford Motor Company
 Fourco Glass Company
 General Electric
 Globe-Amerada
 Guardian Industries
 Hamilton of Indiana
 K-S-H
 LOF Glass
 Libbey-Owens-Ford
 Minex-Poland
 Northwestern Industries
 Ohio Plate Glass
 PPG Industries
 Plaskolite
 Rohm and Haas
 Rotuba Extruders
 Safelite
 Sheffield Plastics
 Swedcast
 Tempered Glass
 Tempglass
 Temp-Safe
 Texas Tempered Glass
 Tuf-flex Glass
 Vidrios Securit
 Viracon
 Virginia Glass
 Visador

Primary Member

Thomas C. Carson
 M. H. Russell
 Roy Buchmin
 Maurice L. Burke
 James M. Staples
 J. M. Peeters
 Hajime Hattori
 Earle D. Moiles
 Jim Pinsky
 Richard E. Turner
 Avery C. Fried
 Harold G. Warp
 Richard L. Morrison
 John Linder
 Robert O. L. Lynn
 Richard R. Miller
 Pieter Knorr
 Gary L. Tate
 Larry W. Cornell
 Donald J. Vild
 Donald J. Vild
 Maurice L. Burke
 Norman G. Heutmaker
 Gene Gilbert
 Richard T. McGuire
 William Klimek
 A. J. Bartosic
 Homer H. Goldsberry
 David R. Jones
 Thomas Kradel
 Ron E. Mildon
 Paul F. Tumey
 Irvin D. Fintel
 Lewis E. Hunt, Jr.
 Hugh France
 Bernard Nathan
 Jaime Urrutia
 Harold Landsman
 Robert L. Brown
 James Seale

First Alternate

David K. Shaddock

 C. J. Youngblood
 F. T. Barker
 Takayoshi Sakaida
 Steve Zabetakis

 Leigh T. Yates

 Delbert Christensen
 E. L. Henrickson
 Edward Rearick
 Herbert L. Curry

 Robert Hayes
 Ronald Purdue
 William W. Korn
 Leroy E. Drake, Jr.
 Leroy E. Drake, Jr.

 James C. Clark
 Charles R. Sutermeister
 Harley Thomas
 T. C. Tjader
 Albert M. Bell
 Homer C. Lewis
 Bernard W. Brooks
 R. G. Braun
 David P. Moorhead

 Thomas D. Boicey
 Joseph O. Kramer

 James Full
 Brooks R. Leavitt
 Roger Hall

Second Alternate

W. H. Beazell

 Lucien Nelson
 Richard T. McGuire

 Richard H. Turner

 Floyd Austin
 L. James Horvath
 John C. Morgan
 John C. Morgan

 James A. Millen
 Lu Weil
 Richard J. Regan, Jr.
 Eugene E. Drood

 Frank J. Scott
 Jerry Bienenfeld

 Donald J. Vild

 A. P. Stillman
 Gerald L. Reynolds

Members from those without certified products:

du Pont George L. Graf, Jr.
 Mobay Henry S. Byrne
 Standard Packaging Martin I. Cohen
 Three M Company Caryl E. Twitchell

Robert B. Rector
 Paul W. Mitchell
 Barry Skolnick
 Louis F. Masonick

G. A. Berger

Members by virtue of being a director:

Consumer
 National Safety Council
 Wiss, Janney and Elstner
 Consumer
 Texas Tech University
 Federal Housing Administration
 Consumer
 Glasstech

Mrs. Jean Cornwell
 Phil Dykstra
 Richard C. Elstner
 Mrs. Sylvia Lav
 Joseph E. Minor
 Lynford K. Snell
 Orville L. Pierson
 Norman Nitschke

SGCC Certification Program Administrator:

Robert A. Nance, CSC
 Nancy W. Johnson, CSC
 Carl R. Walden, CSC

Auditor:

Joseph B. Press, CPA

Legal Counsel:

Samuel Steen, Esquire

SGCC BOARD OF DIRECTORS

Representing Public Interest

Mrs. J. D. Cornwell, Jr.
Route 4; Swan Lake Road
Stockbridge, Georgia 30281
Telephone 404-633-1451

Mr. Phil Dykstra
National Safety Council
444 North Michigan Avenue
Chicago, Illinois 60611
Telephone 312-527-4800

Mr. Richard C. Elstner, S. E.
Wiss, Janney, Elstner and Associates, Inc.
Consulting and Research Engineers
330 Pfingsten Road
Northbrook, Illinois 60062
Telephone 312-272-7400

Mrs. Sylvia Lav
98 Princeton Road
Rockville Center, New York 11570
Telephone 516-764-1732

Dr. Joseph E. Minor, P. E.
Institute for Disaster Research
Texas Tech University
P. O. Box 4089
Lubbock, Texas 79409
Telephone 806-742-3523

Dr. Orville L. Pierson
862 Gainsway Road
Yardley, Pennsylvania 19067
Telephone 215-493-1595

Mr. Lynford K. Snell
HUD Building
Architectural and Engineering Division
Washington, D. C. 20024
Telephone 202-755-5924

Representing Industry

Mr. Thomas C. Carson
ASG Industries, Inc.
P. O. Box 88
Kingsport, Tennessee 37662
Telephone 615-245-3121

Mr. Homer H. Goldsberry
Rotuba Extruders, Inc.
1401 Park Avenue South
Linden, New Jersey 07036
Telephone 201-486-1000

Dr. George L. Graf, Jr.
E. I. DuPont de Nemours and Company
Plastic Products and Resins Department
Chestnut Run
Wilmington, Delaware 19898
Telephone 302-774-3572

Mr. Richard L. Morrison
Ford Motor Company
One Parklane Boulevard
Dearborn, Michigan 48126
Telephone 313-322-1385

Mr. Norman Nitschke
Glasstech, Inc.
801 Front Street
Toledo, Ohio 43605
Telephone 419-693-0696

Mr. Caryl E. Twitchell
3 M Company
Building 230-BC8
St. Paul, Minnesota 55101
Telephone 612-733-6585

Mr. Donald J. Vild
Libbey-Owens-Ford Company
1701 East Broadway
Toledo, Ohio 43605
Telephone 419-242-5781

CERTIFIED PRODUCTS — NUMERICAL SEQUENCE

SGCC- 12 Virginia Glass	SGCC-137 Texas Tempered Glass	SGCC-266 PPG Industries
SGCC- 14 Virginia Glass	SGCC-140 Minex-Poland	SGCC-267 PPG Industries
SGCC- 19 Libbey-Owens-Ford	SGCC-141 ASG Industries	SGCC-270 Tuf-flex
SGCC- 24 ASG Industries	SGCC-150 Libbey-Owens-Ford	SGCC-274 M. L. Burke
SGCC- 26 ASG Industries	SGCC-151 Libbey-Owens-Ford	SGCC-279 Ohio Plate Glass
SGCC- 27 ASG Industries	SGCC-152 Plaskolite	SGCC-286 Vidrierias De Llodio
SGCC- 28 ASG Industries	SGCC-157 Chromalloy-Safetee	SGCC-291 Fourco Glass
SGCC- 31 ASG Industries	SGCC-160 Guardian Industries	SGCC-293 Fourco Glass
SGCC- 37 Vidrierias De Llodio	SGCC-173 Sheffield Plastics	SGCC-295 PPG Industries
SGCC- 38 Vidrierias De Llodio	SGCC-181 Chromalloy-Safetee	SGCC-297 Fourco Glass
SGCC- 39 Guardian Industries	SGCC-182 Chromalloy-Safetee	SGCC-298 Tuf-flex
SGCC- 40 Guardian Industries	SGCC-185 Ohio Plate Glass	SGCC-300 Guardian Industries
SGCC- 41 Guardian Industries	SGCC-186 Ohio Plate Glass	SGCC-308 Falconer Plate Glass
SGCC- 43 Guardian Industries	SGCC-187 Ohio Plate Glass	SGCC-311 Falconer Plate Glass
SGCC- 47 C-E Glass	SGCC-188 Ohio Plate Glass	SGCC-314 Tuf-flex
SGCC- 49 C-E Glass	SGCC-189 Taylor Products	SGCC-315 Tuf-flex
SGCC- 50 C-E Glass	SGCC-190 Taylor Products	SGCC-316 Rotuba Extruders
SGCC- 54 Hamilton of Indiana	SGCC-191 Taylor Products	SGCC-320 Tuf-flex
SGCC- 56 Hamilton of Indiana	SGCC-192 Taylor Products	SGCC-321 Tuf-flex
SGCC- 57 Hamilton of Indiana	SGCC-194 PPG Industries	SGCC-322 Tuf-flex
SGCC- 59 PPG Industries	SGCC-195 PPG Industries	SGCC-323 Tuf-flex
SGCC- 60 PPG Industries	SGCC-196 PPG Industries	SGCC-328 Ohio Plate Glass
SGCC- 61 PPG Industries	SGCC-200 PPG Industries	SGCC-330 C-E Glass
SGCC- 63 PPG Industries	SGCC-201 C-E Glass	SGCC-331 C-E Glass
SGCC- 64 PPG Industries	SGCC-203 Ohio Plate Glass	SGCC-336 C-E Glass
SGCC- 65 PPG Industries	SGCC-205 Armour Laminated	SGCC-337 Tempered Glass
SGCC- 70 PPG Industries	SGCC-206 Armour Laminated	SGCC-338 Tempered Glass
SGCC- 73 PPG Industries	SGCC-209 Canadian Pittsburgh	SGCC-341 Ford Motor Company
SGCC- 74 PPG Industries	SGCC-219 PPG Industries	SGCC-342 Ford Motor Company
SGCC- 75 PPG Industries	SGCC-220 ASG Industries	SGCC-344 C-E Glass
SGCC- 76 C-E Glass	SGCC-221 K-S-H	SGCC-345 C-E Glass
SGCC- 82 Libbey-Owens-Ford	SGCC-225 Safelite Industries	SGCC-346 C-E Glass
SGCC- 89 ASG Industries	SGCC-227 Viracon	SGCC-348 Tempered Glass
SGCC- 90 ASG Industries	SGCC-228 Viracon	SGCC-350 LOF Glass
SGCC- 91 ASG Industries	SGCC-229 Tuf-flex	SGCC-351 LOF Glass
SGCC- 92 Virginia Glass	SGCC-232 Viracon	SGCC-352 LOF Glass
SGCC- 93 Virginia Glass	SGCC-237 Safelite Industries	SGCC-357 Armour Laminated
SGCC- 94 Virginia Glass	SGCC-245 C-E Glass	SGCC-358 Armour Laminated
SGCC- 95 Virginia Glass	SGCC-246 C-E Glass	SGCC-359 Sheffield Plastics
SGCC- 97 Guardian Industries	SGCC-248 PPG Industries	SGCC-360 C-E Glass
SGCC- 98 Guardian Industries	SGCC-249 PPG Industries	SGCC-361 C-E Glass
SGCC- 99 K-S-H	SGCC-250 PPG Industries	SGCC-371 C-E Glass
SGCC-102 PPG Industries	SGCC-251 Canadian Pittsburgh	SGCC-373 LOF Glass
SGCC-108 C-E Glass	SGCC-252 Tyre Brothers	SGCC-374 LOF Glass
SGCC-110 Texas Tempered Glass	SGCC-253 Tyre Brothers	SGCC-375 LOF Glass
SGCC-114 PPG Industries	SGCC-254 Tyre Brothers	SGCC-378 Chromalloy-Safetee
SGCC-118 Flex-O-Glass	SGCC-255 Tyre Brothers	SGCC-379 Chromalloy-Safetee
SGCC-125 C-E Glass	SGCC-256 Tyre Brothers	SGCC-380 Chromalloy-Safetee
SGCC-127 Hamilton of Indiana	SGCC-257 Tuf-flex	SGCC-381 Chromalloy-Safetee
SGCC-128 Hamilton of Indiana	SGCC-258 Tuf-flex	SGCC-382 PPG Industries
SGCC-129 Hamilton of Indiana	SGCC-263 Guardian Industries	SGCC-384 PPG Industries
SGCC-131 Guardian Industries	SGCC-264 Guardian Industries	SGCC-385 C-E Glass
SGCC-136 K-S-H	SGCC-265 C-E Glass	SGCC-386 Libbey-Owens-Ford

CERTIFIED PRODUCTS — NUMERICAL SEQUENCE

SGCC-389 Tuf-flex	SGCC-501 Northwestern Industries	SGCC-618 C-E Glass
SGCC-390 Tuf-flex	SGCC-502 Northwestern Industries	SGCC-619 C-E Glass
SGCC-391 Tuf-flex	SGCC-503 C-E Glass	SGCC-620 C-E Glass
SGCC-392 Tuf-flex	SGCC-508 Central Glass	SGCC-621 Hamilton of Indiana
SGCC-396 Ford Motor Company	SGCC-509 Visador	SGCC-625 Armour Laminated
SGCC-397 Ford Motor Company	SGCC-510 Visador	SGCC-626 Ohio Plate Glass
SGCC-400 PPG Industries	SGCC-511 C-E Glass	SGCC-629 Tempered Glass
SGCC-402 PPG Industries	SGCC-514 Downey Glass	SGCC-630 Downey Glass
SGCC-403 PPG Industries	SGCC-515 Downey Glass	SGCC-631 Guardian Industries
SGCC-404 PPG Industries	SGCC-516 Downey Glass	SGCC-632 ASG Industries
SGCC-405 PPG Industries	SGCC-520 Anglass Industries	SGCC-633 Guardian Industries
SGCC-409 Guardian Industries	SGCC-525 Tuf-flex	SGCC-634 Minex-Poland
SGCC-410 C-E Glass	SGCC-526 Chromalloy-Safetee	SGCC-635 Minex-Poland
SGCC-411 C-E Glass	SGCC-532 Temp-Safe	SGCC-637 Cal-Temp
SGCC-412 C-E Glass	SGCC-533 Armour Laminated	SGCC-638 Cal-Temp
SGCC-413 C-E Glass	SGCC-543 Central Glass	SGCC-639 Cal-Temp
SGCC-414 C-E Glass	SGCC-544 Libbey-Owens-Ford	SGCC-640 Cal-Temp
SGCC-415 M. L. Burke	SGCC-545 LOF Glass	SGCC-641 Cal-Temp
SGCC-421 Tempered Glass	SGCC-547 ASG Industries	SGCC-642 Sun Valley
SGCC-425 Guardian Industries	SGCC-553 Central Glass	SGCC-643 Sun Valley
SGCC-440 Temp-Safe	SGCC-560 Swedcast	SGCC-644 M. L. Burke
SGCC-441 Temp-Safe	SGCC-562 Ohio Plate Glass	SGCC-646 Minex-Poland
SGCC-444 Libbey-Owens-Ford	SGCC-564 Buchmin Industries	SGCC-647 PPG Industries
SGCC-445 Globe-Amerada	SGCC-567 Manchester Products	SGCC-648 PPG Industries
SGCC-446 PPG Industries	SGCC-570 Texas Tempered Glass	SGCC-650 Armour Laminated
SGCC-448 Vidrierias De Llodio	SGCC-573 K-S-H	SGCC-651 Armour Laminated
SGCC-449 Libbey-Owens-Ford	SGCC-574 Vidrios Securit	SGCC-652 Armour Laminated
SGCC-450 Libbey-Owens-Ford	SGCC-583 Artistic Glass	SGCC-653 PPG Industries
SGCC-451 Libbey-Owens-Ford	SGCC-584 Artistic Glass	SGCC-654 Ohio Plate Glass
SGCC-452 C-E Glass	SGCC-585 Artistic Glass	SGCC-657 Armour Laminated
SGCC-453 C-E Glass	SGCC-586 Feather-lite	SGCC-658 Cristales Inastillables
SGCC-454 PPG Industries	SGCC-587 ASG Industries	SGCC-659 M. L. Burke
SGCC-455 PPG Industries	SGCC-588 ASG Industries	SGCC-662 Guardian Industries
SGCC-456 PPG Industries	SGCC-589 M. L. Burke	SGCC-663 Falconer Plate Glass
SGCC-458 Guardian Industries	SGCC-592 Tempglass	SGCC-664 Falconer Plate Glass
SGCC-463 Viracon	SGCC-593 Tempglass	SGCC-665 Guardian Industries
SGCC-464 Libbey-Owens-Ford	SGCC-594 Tempglass	SGCC-666 Sierracin Corporation
SGCC-470 Visador	SGCC-595 Tempglass	SGCC-667 C-E Glass
SGCC-471 Guardian Industries	SGCC-597 Tempglass	SGCC-668 Texas Tempered Glass
SGCC-474 PPG Industries	SGCC-598 ASG Industries	SGCC-669 Texas Tempered Glass
SGCC-475 PPG Industries	SGCC-600 Doulton Tempered	SGCC-670 Northwestern Industries
SGCC-478 Northwestern Industries	SGCC-601 Doulton Tempered	SGCC-671 General Glass Imports
SGCC-479 Northwestern Industries	SGCC-603 Downey Glass	SGCC-672 Carolina Processed Glass
SGCC-481 Northwestern Industries	SGCC-604 Downey Glass	SGCC-673 Carolina Processed Glass
SGCC-482 Tuf-flex	SGCC-605 Downey Glass	SGCC-674 Carolina Processed Glass
SGCC-483 Tuf-flex	SGCC-606 Downey Glass	SGCC-675 PPG Industries
SGCC-487 Guardian Industries	SGCC-607 Downey Glass	SGCC-676 PPG Industries
SGCC-488 Temp-Safe	SGCC-608 Downey Glass	SGCC-677 Downey Glass
SGCC-489 C-E Glass	SGCC-609 Downey Glass	SGCC-678 Downey Glass
SGCC-490 Tuf-flex	SGCC-610 Feather-lite	SGCC-681 Romsit
SGCC-491 Tuf-flex	SGCC-612 Falconer Plate Glass	SGCC-682 Romsit
SGCC-496 Mitsubishi Rayon	SGCC-614 Libbey-Owens-Ford	SGCC-683 ASG Industries
SGCC-499 ASG Industries	SGCC-615 M. L. Burke	SGCC-684 ASG Industries
SGCC-500 Northwestern Industries	SGCC-617 Guardian Industries	SGCC-690 Sun Valley

CERTIFIED PRODUCTS ALPHABETICAL BY PLANT

FOR LISTING BY PRODUCT TYPE, PLEASE SEE PAGE 21

ASG Industries, Inc.; Greenland, Tennessee			
SGCC-598	1/8	inch tempered transparent glass	Unlimited size
SGCC-220	3/16	inch tempered transparent glass	Unlimited size
SGCC- 89	1/4	inch tempered transparent glass	Unlimited size
SGCC- 90	3/8	inch tempered transparent glass	Unlimited size
SGCC- 91	1/2	inch tempered transparent glass	Unlimited size
SGCC-547	3/4	inch tempered transparent glass	Unlimited size
SGCC-587	1/8	inch tempered pattern glass (shallow patterns)	Unlimited size
SGCC-588	7/32	inch tempered pattern glass (shallow patterns)	Unlimited size
ASG Industries, Inc.; Kingsport, Tennessee			
SGCC- 28	3/16	inch tempered transparent glass	Unlimited size
SGCC- 24	1/4	inch tempered transparent glass	Unlimited size
SGCC-141	1/8	inch tempered pattern glass (shallow patterns)	Unlimited size
SGCC- 31	7/32	inch tempered pattern glass (shallow patterns)	Unlimited size
SGCC- 27	7/32	inch laminated transparent glass (0.015 inch plastic)	Unlimited size
SGCC- 26	1/4	inch laminated transparent glass (0.015 inch plastic)	Unlimited size
SGCC-499	1/8:1/4	laminated transparent glass (0.015 inch plastic)	Unlimited size
SGCC-632	1/4	inch polished wired glass (3/4 inch diamond)	Unlimited size
SGCC-683	1/4	inch polished wired glass (Pinstripe)	Unlimited size
SGCC-684	7/32	inch pattern wired glass (Pinstripe; 1/2 inch parallel) (Finetex)	Unlimited size
Anglass Industries, Inc.; San Fernando, California			
SGCC-520	1/8	inch tempered transparent glass	Unlimited size
Armour Laminated Glass Company, Inc.; Brooklyn, New York			
SGCC-650	1/4	inch tempered transparent glass	Unlimited size
SGCC-651	1/2	inch tempered transparent glass	Unlimited size
SGCC-533	1/4	inch laminated transparent glass (0.015 inch plastic)	Unlimited size
SGCC-652	3/8	inch laminated transparent glass (0.015 inch plastic)	Unlimited size
Armour Laminated Glass Company, Inc.; Santa Fe Springs, California			
SGCC-625	3/16	inch tempered transparent glass	Unlimited size
SGCC-205	1/4	inch tempered transparent glass	Unlimited size
SGCC-657	1/8	inch tempered pattern glass (shallow patterns)	Unlimited size
SGCC-206	7/32	inch tempered pattern glass (shallow patterns)	Unlimited size
SGCC-357	1/4	inch laminated transparent glass (0.030 inch plastic)	Unlimited size
SGCC-358	1/2	inch laminated transparent glass (0.030 inch plastic)	Unlimited size
Artistic Glass Products Company; Trumbauersville, Pennsylvania			
SGCC-583	1/8	inch tempered transparent glass	16" by 19"
SGCC-584	3/16	inch tempered transparent glass	18" by 24"
SGCC-585	1/4	inch tempered transparent glass	18" by 24"
Buchmin Industries; Reedley, California			
SGCC-564	1/4	inch laminated transparent glass (0.015 inch plastic)	Unlimited size
M. L. Burke Company; Cornwells Heights, Pennsylvania			
SGCC-415	1/8	inch tempered transparent glass	Unlimited size
SGCC-274	3/16	inch tempered transparent glass	Unlimited size
SGCC-615	1/4	inch tempered transparent glass	Unlimited size
SGCC-644	1/8	inch tempered pattern glass (shallow patterns)	Unlimited size
SGCC-659	5/32	inch tempered pattern glass (medium patterns)	Unlimited size
SGCC-589	7/32	inch tempered pattern glass (shallow patterns)	Unlimited size

CERTIFIED PRODUCTS ALPHABETICAL BY PLANT

FOR LISTING BY PRODUCT TYPE, PLEASE SEE PAGE 21

C-E Glass; Atlanta, Georgia

SGCC-667	3/16	inch	tempered	transparent	glass	Unlimited size
SGCC-108	1/4	inch	tempered	transparent	glass	Unlimited size
SGCC-371	3/8	inch	tempered	transparent	glass	Unlimited size
SGCC-125	7/32	inch	tempered	pattern	glass (shallow patterns)	Unlimited size

C-E Glass; Carson, California

SGCC-453	1/8	inch	tempered	transparent	glass	Unlimited size
SGCC-410	3/16	inch	tempered	transparent	glass	Unlimited size
SGCC-411	1/4	inch	tempered	transparent	glass	Unlimited size
SGCC-412	3/8	inch	tempered	transparent	glass	Unlimited size
SGCC-413	1/2	inch	tempered	transparent	glass	Unlimited size
SGCC-452	1/8	inch	tempered	pattern	glass (shallow patterns)	Unlimited size
SGCC-618	5/32	inch	tempered	pattern	glass (medium patterns)	Unlimited size
SGCC-414	3/16	inch	tempered	pattern	glass (shallow patterns)	Unlimited size
SGCC-619	7/32	inch	tempered	pattern	glass (shallow patterns)	Unlimited size
SGCC-620	7/32	inch	tempered	pattern	glass (medium patterns)	Unlimited size

C-E Glass; Cinnaminson, New Jersey

SGCC-489	1/8	inch	tempered	transparent	glass	Unlimited size
SGCC-503	5/32	inch	tempered	transparent	glass (32 ounce)	Unlimited size
SGCC-245	3/16	inch	tempered	transparent	glass	Unlimited size
SGCC-246	1/4	inch	tempered	transparent	glass	Unlimited size
SGCC-345	3/8	inch	tempered	transparent	glass	Unlimited size
SGCC-346	1/2	inch	tempered	transparent	glass	Unlimited size
SGCC-265	7/32	inch	tempered	pattern	glass (shallow patterns)	Unlimited size

C-E Glass; Lancaster, Ohio; Slocum Street

SGCC-330	3/16	inch	tempered	transparent	glass	30" by 39"
SGCC-331	7/32	inch	tempered	transparent	glass	30" by 39"

C-E Glass; Miami, Florida

SGCC-76	3/16	inch	tempered	transparent	glass	Unlimited size
SGCC-49	1/4	inch	tempered	transparent	glass	Unlimited size
SGCC-50	7/32	inch	tempered	pattern	glass (shallow patterns)	Unlimited size

C-E Glass; Tampa, Florida

SGCC-385	3/16	inch	tempered	transparent	glass	Unlimited size
SGCC-47	1/4	inch	tempered	transparent	glass	Unlimited size
SGCC-201	7/32	inch	tempered	pattern	glass (shallow patterns)	Unlimited size

C-E Glass; Warrenton, Missouri

SGCC-360	1/8	inch	tempered	transparent	glass	Unlimited size
SGCC-336	3/16	inch	tempered	transparent	glass	Unlimited size
SGCC-361	1/4	inch	tempered	transparent	glass	Unlimited size
SGCC-511	1/8	inch	tempered	pattern	glass (shallow patterns)	30" by 70"
SGCC-344	7/32	inch	tempered	pattern	glass (shallow patterns)	Unlimited size

Cal-Temp; Santa Fe Springs, California

SGCC-637	3/16	inch	tempered	transparent	glass	Unlimited size
SGCC-638	1/4	inch	tempered	transparent	glass	Unlimited size
SGCC-639	3/8	inch	tempered	transparent	glass	Unlimited size
SGCC-640	1/2	inch	tempered	transparent	glass	Unlimited size
SGCC-641	7/32	inch	tempered	pattern	glass (shallow patterns)	Unlimited size

CERTIFIED PRODUCTS ALPHABETICAL BY PLANT

FOR LISTING BY PRODUCT TYPE, PLEASE SEE PAGE 21

Canadian Pittsburgh Industries, Ltd.; Owen Sound, Ontario, Canada

SGCC-251	1/8	inch	tempered transparent glass	Unlimited size
SGCC-209	3/16	inch	tempered transparent glass	Unlimited size

Carolina Processed Glass, Inc.; Rock Hill, South Carolina

SGCC-672	3/16	inch	tempered transparent glass	Unlimited size
SGCC-673	1/4	inch	tempered transparent glass	Unlimited size
SGCC-674	3/8	inch	tempered transparent glass	30" by 72"

Central Glass Company, Ltd.; Tokyo, Japan

SGCC-553	1/4	inch	laminated transparent glass (0.015 inch plastic)	Unlimited size
SGCC-508	1/4	inch	polished wired glass (3/4 inch diamond mesh)	Unlimited size
SGCC-543	1/4	inch	polished wired glass (1/2 inch square mesh)	Unlimited size

Chromalloy-Safetee Glass Division; King of Prussia, Pennsylvania

SGCC-526	3/16	inch	tempered transparent glass	Unlimited size
SGCC-157	1/4	inch	tempered transparent glass	Unlimited size
SGCC-181	3/8	inch	tempered transparent glass	Unlimited size
SGCC-182	1/2	inch	tempered transparent glass	Unlimited size
SGCC-378	7/32	inch	laminated transparent glass (0.015 inch plastic)	Unlimited size
SGCC-379	1/4	inch	laminated transparent glass (0.015 inch plastic)	Unlimited size
SGCC-380	3/8	inch	laminated transparent glass (0.015 inch plastic)	Unlimited size
SGCC-381	1/2	inch	laminated transparent glass (0.015 inch plastic)	Unlimited size

Cristales Inastillables De Mexico, S. A.; Mexico City, Mexico

SGCC-658	1/4	inch	laminated transparent glass (0.015 inch plastic)	Unlimited size
----------	-----	------	--	----------------

Doulton Tempered Glass, Ltd.; Bradford, England

SGCC-600	5/32	inch	tempered transparent glass (32 ounce)	Unlimited size
SGCC-601	1/4	inch	tempered transparent glass	Unlimited size

Downey Glass Company; Downey, California

SGCC-603	1/8	inch	tempered transparent glass	Unlimited size
SGCC-606	3/16	inch	tempered transparent glass	Unlimited size
SGCC-609	1/4	inch	tempered transparent glass	Unlimited size
SGCC-604	1/8	inch	tempered pattern glass (shallow patterns)	Unlimited size
SGCC-605	1/8	inch	tempered pattern glass (medium patterns)	Unlimited size
SGCC-607	3/16	inch	tempered pattern glass (shallow patterns)	Unlimited size
SGCC-608	7/32	inch	tempered pattern glass (shallow patterns)	Unlimited size

Downey Glass Company; Los Angeles, California

SGCC-630	3/16	inch	tempered transparent glass	Unlimited size
SGCC-514	1/4	inch	tempered transparent glass	Unlimited size
SGCC-515	3/8	inch	tempered transparent glass	Unlimited size
SGCC-516	1/2	inch	tempered transparent glass	Unlimited size
SGCC-677	3/16	inch	tempered pattern glass (shallow patterns)	Unlimited size
SGCC-678	7/32	inch	tempered pattern glass (shallow patterns)	Unlimited size

Falconer Plate Glass Corporation; Falconer, New York

SGCC-663	3/16	inch	tempered transparent glass	Unlimited size
SGCC-308	1/4	inch	tempered transparent glass	Unlimited size
SGCC-612	3/8	inch	tempered transparent glass	Unlimited size
SGCC-311	1/2	inch	tempered transparent glass	Unlimited size
SGCC-664	3/4	inch	tempered transparent glass	Unlimited size

CERTIFIED PRODUCTS ALPHABETICAL BY PLANT

FOR LISTING BY PRODUCT TYPE, PLEASE SEE PAGE 21

Feather-lite Manufacturing Company; Malvern, Arkansas

SGCC-586	1/8	inch	tempered transparent glass	Unlimited size
SGCC-610	3/16	inch	tempered transparent glass	Unlimited size

Flex-O-Glass, Inc.; Dixon, Illinois

SGCC-118	0.080	inch	through 0.125 inch smooth extruded acrylic	Unlimited size
----------	-------	------	--	----------------

Ford Motor Company; Dearborn, Michigan

SGCC-341	1/8	inch	tempered transparent glass	Unlimited size
SGCC-396	5/32	inch	tempered transparent glass (32 ounce)	Unlimited size
SGCC-342	3/16	inch	tempered transparent glass	Unlimited size
SGCC-397	1/4	inch	tempered transparent glass	Unlimited size

Fourco Glass Company; Clarksburg, West Virginia

SGCC-297	1/8	inch	tempered transparent glass	Unlimited size
SGCC-291	3/16	inch	tempered transparent glass	Unlimited size
SGCC-293	1/4	inch	tempered transparent glass	Unlimited size

General Glass Imports Corporation; Medias, Romania

SGCC-671	3/16	inch	tempered transparent glass	Unlimited size
----------	------	------	----------------------------	----------------

Globe-Amerada Glass Company; Elk Grove Village, Illinois

SGCC-445	7/32	inch	laminated transparent glass (0.015 inch plastic)	Unlimited size
----------	------	------	--	----------------

Guardian Industries Corporation; Carleton, Michigan

SGCC-631	3/16	inch	tempered transparent glass	Unlimited size
SGCC-131	1/4	inch	tempered transparent glass	Unlimited size
SGCC-160	3/8	inch	tempered transparent glass	Unlimited size
SGCC-263	1/2	inch	tempered transparent glass	Unlimited size

Guardian Industries Corporation; Fort Lauderdale, Florida

SGCC-633	3/16	inch	tempered transparent glass	Unlimited size
SGCC- 39	7/32	inch	tempered transparent glass	Unlimited size
SGCC- 40	1/4	inch	tempered transparent glass	Unlimited size
SGCC- 41	3/8	inch	tempered transparent glass	Unlimited size
SGCC-617	7/32	inch	tempered pattern glass (shallow patterns)	Unlimited size

Guardian Industries Corporation; Torrance, California

SGCC-409	3/16	inch	tempered transparent glass	Unlimited size
SGCC-425	7/32	inch	tempered transparent glass	Unlimited size
SGCC- 43	1/4	inch	tempered transparent glass	Unlimited size
SGCC- 97	3/8	inch	tempered transparent glass	Unlimited size
SGCC- 98	1/2	inch	tempered transparent glass	Unlimited size
SGCC-264	7/32	inch	tempered pattern glass (shallow patterns)	Unlimited size

Guardian Industries Corporation; Upper Sandusky, Ohio

SGCC-458	7/32	inch	laminated transparent glass (0.015 inch plastic)	Unlimited size
SGCC-487	1/4	inch	laminated transparent glass (0.015 inch plastic)	Unlimited size

Guardian Industries Corporation; Webster, Massachusetts

SGCC-300	1/8	inch	tempered transparent glass	Unlimited size
SGCC-665	3/16	inch	tempered transparent glass	Unlimited size
SGCC-662	1/4	inch	tempered transparent glass	Unlimited size
SGCC-471	3/8	inch	tempered transparent glass	Unlimited size

CERTIFIED PRODUCTS ALPHABETICAL BY PLANT

FOR LISTING BY PRODUCT TYPE, PLEASE SEE PAGE 21

Hamilton of Indiana, Inc.; Vincennes, Indiana

SGCC- 54	1/8	inch	tempered transparent glass	Unlimited size
SGCC- 56	3/16	inch	tempered transparent glass	Unlimited size
SGCC- 57	1/4	inch	tempered transparent glass	Unlimited size
SGCC-127	3/8	inch	tempered transparent glass	Unlimited size
SGCC-128	1/2	inch	tempered transparent glass	Unlimited size
SGCC-621	1/8	inch	tempered pattern glass (shallow patterns)	Unlimited size
SGCC-129	7/32	inch	tempered pattern glass (shallow patterns)	Unlimited size

K-S-H, Inc.; Crestwood, Missouri

SGCC- 99	0.100	inch	through 3/16 inch pattern extruded plastic (Indoor use only) (Glacial, Calypso, Roundel)	Unlimited size
----------	-------	------	---	----------------

K-S-H, Inc.; Tustin, California

SGCC-573	0.080	inch	through 0.125 inch smooth extruded acrylic	Unlimited size
SGCC-221	0.100	inch	through 3/16 inch pattern extruded plastic (Indoor use only) (Calypso, Glacial, Starlite, Roundel)	Unlimited size

K-S-H, Inc.; Xenia, Ohio

SGCC-136	0.060	inch	through 0.125 inch smooth extruded acrylic	Unlimited size
----------	-------	------	--	----------------

LOF Glass, Inc.; Laurinburg, North Carolina

SGCC-350	1/8	inch	tempered transparent glass	Unlimited size
SGCC-545	5/32	inch	tempered transparent glass (32 ounce)	Unlimited size
SGCC-351	3/16	inch	tempered transparent glass	Unlimited size
SGCC-352	1/4	inch	tempered transparent glass	Unlimited size
SGCC-373	5/16	inch	tempered transparent glass	Unlimited size
SGCC-374	3/8	inch	tempered transparent glass	Unlimited size
SGCC-375	1/2	inch	tempered transparent glass	Unlimited size

Libbey-Owens-Ford Company; East Toledo, Ohio

SGCC-450	SS/SS		laminated transparent glass (0.015 inch plastic)	Unlimited size
SGCC-451	SS/DS		laminated transparent glass (0.015 inch plastic)	Unlimited size
SGCC- 82	1/4	inch	laminated transparent glass (0.015 inch plastic)	Unlimited size
SGCC-614	1/2	inch	laminated transparent glass (0.030 inch plastic)	Unlimited size

Libbey-Owens-Ford Company; Rossford, Ohio

SGCC-386	3/16	inch	tempered transparent glass	Unlimited size
SGCC- 19	1/4	inch	tempered transparent glass	Unlimited size
SGCC-464	5/16	inch	tempered transparent glass	Unlimited size
SGCC-449	3/8	inch	tempered transparent glass	Unlimited size
SGCC-150	1/2	inch	tempered transparent glass	Unlimited size
SGCC-544	5/8	inch	tempered transparent glass	Unlimited size
SGCC-151	3/4	inch	tempered transparent glass	Unlimited size
SGCC-444	7/8	inch	tempered transparent glass	Unlimited size

Manchester Products Company; Chatsworth, California

SGCC-567	0.100	inch	smooth extruded acrylic	Unlimited size
----------	-------	------	-------------------------	----------------

Minex-Poland; Jaroszwiec, Poland

SGCC-140	7/32	inch	tempered pattern glass (shallow patterns)	Unlimited size
----------	------	------	---	----------------

CERTIFIED PRODUCTS ALPHABETICAL BY PLANT

FOR LISTING BY PRODUCT TYPE, PLEASE SEE PAGE 21

Minex-Poland; Sandomierz, Poland

SGCC-634	1/8	inch	tempered transparent glass	Unlimited size
SGCC-646	3/16	inch	tempered transparent glass	Unlimited size
SGCC-635	5/32	inch	tempered pattern glass (shallow patterns)	Unlimited size

Mitsubishi Rayon Company, Ltd.; Ohtake, Japan

SGCC-496	0.080	inch	and greater thicknesses smooth continuously cast acrylic	Unlimited size
----------	-------	------	--	----------------

Northwestern Industries, Inc.; Seattle, Washington

SGCC-478	1/8	inch	tempered transparent glass	Unlimited size
SGCC-670	5/32	inch	tempered transparent glass	Unlimited size
SGCC-479	3/16	inch	tempered transparent glass	Unlimited size
SGCC-481	1/4	inch	tempered transparent glass	Unlimited size
SGCC-500	3/8	inch	tempered transparent glass	Unlimited size
SGCC-501	1/2	inch	tempered transparent glass	Unlimited size
SGCC-502	7/32	inch	tempered pattern glass (shallow patterns)	Unlimited size

Ohio Plate Glass Company; Lewisburg, Ohio

SGCC-187	1/8	inch	tempered transparent glass	Unlimited size
SGCC-185	3/16	inch	tempered transparent glass	Unlimited size
SGCC-279	7/32	inch	tempered transparent glass	Unlimited size
SGCC-186	1/4	inch	tempered transparent glass	Unlimited size
SGCC-203	1/8	inch	tempered pattern glass (shallow patterns)	Unlimited size
SGCC-654	1/8	inch	tempered pattern glass (medium patterns)	Unlimited size
SGCC-188	3/16	inch	tempered pattern glass (shallow patterns)	Unlimited size
SGCC-328	3/16	inch	tempered pattern glass (deep patterns)	Unlimited size
SGCC-562	7/32	inch	tempered pattern glass (shallow patterns)	Unlimited size
SGCC-626	7/32	inch	tempered pattern glass (medium patterns)	Unlimited size

PPG Industries, Inc.; Baltimore, Maryland

SGCC-454	3/16	inch	tempered transparent glass	Unlimited size
SGCC-455	1/4	inch	tempered transparent glass	Unlimited size
SGCC-474	3/8	inch	tempered transparent glass	Unlimited size
SGCC-475	1/2	inch	tempered transparent glass	Unlimited size
SGCC-456	7/32	inch	tempered pattern glass (shallow patterns)	Unlimited size

PPG Industries, Inc.; Carlisle, Pennsylvania

SGCC-250	1/8	inch	tempered transparent glass	Unlimited size
SGCC-675	5/32	inch	tempered transparent glass (32 ounce)	Unlimited size
SGCC-249	3/16	inch	tempered transparent glass	Unlimited size
SGCC-382	1/4	inch	tempered transparent glass	Unlimited size

PPG Industries, Inc.; Chicago, Illinois

SGCC-266	3/16	inch	tempered transparent glass	Unlimited size
SGCC-267	1/4	inch	tempered transparent glass	Unlimited size
SGCC-647	3/8	inch	tempered transparent glass	Unlimited size
SGCC-648	1/2	inch	tempered transparent glass	Unlimited size
SGCC-653	7/32	inch	tempered pattern glass (shallow patterns)	Unlimited size

PPG Industries, Inc.; Creighton, Pennsylvania

SGCC-114	1/4	inch	laminated transparent glass (0.015 inch plastic)	Unlimited size
----------	-----	------	--	----------------

CERTIFIED PRODUCTS ALPHABETICAL BY PLANT

FOR LISTING BY PRODUCT TYPE, PLEASE SEE PAGE 21

PPG Industries, Inc.; Crestline, Ohio				
SGCC- 60	1/8	inch	tempered transparent glass	Unlimited size
SGCC- 65	3/16	inch	tempered transparent glass	Unlimited size
SGCC-102	1/4	inch	tempered transparent glass	26 3/4" by 72"
SGCC-446	3/16	inch	tempered pattern glass (deep patterns)	Unlimited size
PPG Industries, Inc.; Dallas, Texas				
SGCC-400	3/16	inch	tempered transparent glass	Unlimited size
SGCC-402	1/4	inch	tempered transparent glass	Unlimited size
SGCC-405	3/8	inch	tempered transparent glass	Unlimited size
SGCC-403	1/2	inch	tempered transparent glass	Unlimited size
SGCC-404	7/32	inch	tempered pattern glass (shallow patterns)	Unlimited size
PPG Industries, Inc.; Ford City, Pennsylvania				
SGCC- 61	3/16	inch	tempered transparent glass	Unlimited size
SGCC- 70	1/4	inch	tempered transparent glass	Unlimited size
SGCC- 74	3/8	inch	tempered transparent glass	Unlimited size
SGCC- 75	1/2	inch	tempered transparent glass	Unlimited size
SGCC-248	3/4	inch	tempered transparent glass	Unlimited size
PPG Industries, Inc.; Fresno, California				
SGCC-295	1/8	inch	tempered transparent glass	Unlimited size
SGCC-676	5/32	inch	tempered transparent glass (32 ounce)	Unlimited size
SGCC- 64	3/16	inch	tempered transparent glass	Unlimited size
SGCC- 73	1/4	inch	tempered transparent glass	Unlimited size
SGCC-384	5/32	inch	tempered pattern glass (medium patterns)	Unlimited size
PPG Industries, Inc.; Miami, Florida				
SGCC-195	3/16	inch	tempered transparent glass	Unlimited size
SGCC-194	1/4	inch	tempered transparent glass	Unlimited size
SGCC-196	3/8	inch	tempered transparent glass	Unlimited size
SGCC-200	1/2	inch	tempered transparent glass	Unlimited size
SGCC-219	7/32	inch	tempered pattern glass (shallow patterns)	Unlimited size
PPG Industries, Inc.; Mt. Zion, Illinois				
SGCC- 59	1/8	inch	tempered transparent glass	Unlimited size
SGCC- 63	3/16	inch	tempered transparent glass	Unlimited size
Plaskolite, Inc.; Columbus, Ohio				
SGCC-152	0.080	inch	through 0.125 inch smooth extruded acrylic	Unlimited size
Romsit; Medias, Romania				
SGCC-682	5/32	inch	tempered transparent glass	Unlimited size
SGCC-681	3/16	inch	tempered transparent glass	Unlimited size
Rotuba Extruders, Inc.; Linden, New Jersey				
SGCC-316	0.080	inch	and greater thicknesses smooth extruded acrylic	Unlimited size
Safelite Industries; Denver, Colorado				
SGCC-237	1/4	inch	laminated transparent glass (0.015 inch plastic)	Unlimited size
Safelite Industries; Wichita, Kansas				
SGCC-225	1/8	inch	tempered transparent glass	Unlimited size

CERTIFIED PRODUCTS ALPHABETICAL BY PLANT

FOR LISTING BY PRODUCT TYPE, PLEASE SEE PAGE 21

Sheffield Plastics, Inc.; Sheffield, Massachusetts			
SGCC-173	0.080 inch	through 0.125 inch smooth extruded acrylic	Unlimited size
SGCC-359	0.060 inch	and greater thicknesses smooth extruded polycarbonate	Unlimited size
Sierracin Corporation; Sylmar, California			
SGCC-666	7/16 inch	laminated transparent glass 0.100 chemically tempered glass: 0.060 PVB: 0.125 polycarbonate: 0.060 PVB: 0.100 chemically tempered glass	Unlimited size
Sun Valley Tempered Glass Company; Oxnard, California			
SGCC-642	3/16 inch	tempered transparent glass	Unlimited size
SGCC-643	1/4 inch	tempered transparent glass	Unlimited size
SGCC-690	7/32 inch	tempered pattern glass (shallow patterns)	Unlimited size
Swedcast Corporation; Florence, Kentucky			
SGCC-560	0.080 inch	and greater thicknesses smooth continuously cast acrylic (SWEDGLAZE SG-B)	Unlimited size
Taylor Products, Inc.; Payne, Ohio			
SGCC-190	3/16 inch	tempered transparent glass	Unlimited size
SGCC-192	7/32 inch	tempered transparent glass	Unlimited size
SGCC-189	1/4 inch	tempered transparent glass	Unlimited size
SGCC-191	7/32 inch	tempered pattern glass (shallow patterns)	Unlimited size
Tempered Glass Corporation; Tampa, Florida			
SGCC-629	3/16 inch	tempered transparent glass	Unlimited size
SGCC-337	1/4 inch	tempered transparent glass	Unlimited size
SGCC-348	3/8 inch	tempered transparent glass	Unlimited size
SGCC-338	1/2 inch	tempered transparent glass	Unlimited size
SGCC-421	7/32 inch	tempered pattern glass (shallow patterns)	Unlimited size
Tempglass, Inc.; Perrysburg, Ohio			
SGCC-592	3/16 inch	tempered transparent glass	Unlimited size
SGCC-593	1/4 inch	tempered transparent glass	Unlimited size
SGCC-594	3/8 inch	tempered transparent glass	Unlimited size
SGCC-595	1/2 inch	tempered transparent glass	Unlimited size
SGCC-597	7/32 inch	tempered pattern glass (shallow patterns)	Unlimited size
Temp-Safe, Inc.; Edmond, Oklahoma			
SGCC-440	3/16 inch	tempered transparent glass	Unlimited size
SGCC-441	1/4 inch	tempered transparent glass	Unlimited size
SGCC-532	3/8 inch	tempered transparent glass	Unlimited size
SGCC-488	1/2 inch	tempered transparent glass	Unlimited size
Texas Tempered Glass Company; Houston, Texas			
SGCC-110	3/16 inch	tempered transparent glass	Unlimited size
SGCC-137	1/4 inch	tempered transparent glass	Unlimited size
SGCC-668	3/8 inch	tempered transparent glass	Unlimited size
SGCC-669	1/2 inch	tempered transparent glass	Unlimited size
SGCC-570	7/32 inch	laminated transparent glass (0.015 inch plastic)	Unlimited size

CERTIFIED PRODUCTS ALPHABETICAL BY PLANT

FOR LISTING BY PRODUCT TYPE, PLEASE SEE PAGE 21

Tuf-flex Glass, Inc.; Atlanta, Georgia

SGCC-320	3/16	inch	tempered transparent glass	Unlimited size
SGCC-321	1/4	inch	tempered transparent glass	Unlimited size
SGCC-322	3/8	inch	tempered transparent glass	Unlimited size
SGCC-323	1/2	inch	tempered transparent glass	Unlimited size

Tuf-flex Glass, Inc.; Elmhurst, Illinois

SGCC-257	3/16	inch	tempered transparent glass	Unlimited size
SGCC-229	1/4	inch	tempered transparent glass	Unlimited size
SGCC-258	3/8	inch	tempered transparent glass	Unlimited size
SGCC-270	1/2	inch	tempered transparent glass	Unlimited size

Tuf-flex Glass, Inc.; Irving, Texas

SGCC-389	3/16	inch	tempered transparent glass	Unlimited size
SGCC-390	1/4	inch	tempered transparent glass	Unlimited size
SGCC-391	3/8	inch	tempered transparent glass	Unlimited size
SGCC-392	1/2	inch	tempered transparent glass	Unlimited size

Tuf-flex Glass, Inc.; Saddle Brook, New Jersey

SGCC-525	3/16	inch	tempered transparent glass	Unlimited size
SGCC-298	1/4	inch	tempered transparent glass	Unlimited size
SGCC-314	3/8	inch	tempered transparent glass	Unlimited size
SGCC-315	1/2	inch	tempered transparent glass	Unlimited size

Tuf-flex Glass, Inc.; Union City, California

SGCC-490	3/16	inch	tempered transparent glass	Unlimited size
SGCC-491	1/4	inch	tempered transparent glass	Unlimited size
SGCC-482	3/8	inch	tempered transparent glass	Unlimited size
SGCC-483	1/2	inch	tempered transparent glass	Unlimited size

Tyre Brothers Glass Company; Los Angeles, California

SGCC-252	3/16	inch	tempered transparent glass	Unlimited size
SGCC-253	1/4	inch	tempered transparent glass	Unlimited size
SGCC-254	3/8	inch	tempered transparent glass	Unlimited size
SGCC-255	1/2	inch	tempered transparent glass	Unlimited size
SGCC-256	7/32	inch	tempered pattern glass (shallow patterns)	Unlimited size

Vidrierias De Llodio, S. A.; Alava, Spain

SGCC-286	1/8	inch	tempered transparent glass	Unlimited size
SGCC-448	5/32	inch	tempered transparent glass (32 ounce)	Unlimited size
SGCC- 38	3/16	inch	tempered transparent glass	Unlimited size
SGCC- 37	7/32	inch	tempered transparent glass	Unlimited size

Vidrios Securit, S. A.; Barranquilla, Colombia

SGCC-574	1/8	inch	tempered transparent glass	Unlimited size
----------	-----	------	----------------------------	----------------

Viracon, Inc.; Owatonna, Minnesota

SGCC-227	3/16	inch	tempered transparent glass	Unlimited size
SGCC-228	1/4	inch	tempered transparent glass	Unlimited size
SGCC-463	7/32	inch	tempered pattern glass (shallow patterns)	Unlimited size
SGCC-232	1/4	inch	laminated transparent glass (0.015 inch plastic)	Unlimited size

CERTIFIED PRODUCTS ALPHABETICAL BY PLANT

FOR LISTING BY PRODUCT TYPE, PLEASE SEE PAGE 21

Virginia Glass Products Corporation; Martinsville, Virginia					
SGCC- 12	3/16	inch	tempered transparent glass		Unlimited size
SGCC- 14	1/4	inch	tempered transparent glass		Unlimited size
SGCC- 93	3/8	inch	tempered transparent glass		Unlimited size
SGCC- 94	1/2	inch	tempered transparent glass		Unlimited size
SGCC- 95	3/4	inch	tempered transparent glass		Unlimited size
SGCC- 92	7/32	inch	tempered pattern glass (shallow patterns)		Unlimited size
Visador Company; Jasper, Texas					
SGCC-470	1/8	inch	leaded transparent glass		
			4.20 by 9.89 inch and 3.76 by 7.95 inch diamonds	25"	by 67"
SGCC-509	1/8	inch	leaded annealed pattern glass (Cathedral)		
			3.76 by 7.95 inch and 4.35 by 9.85 inch diamonds	25"	by 67"
			3.24 by 8.04 inch diamond	22"	by 72"
SGCC-510	3/16	inch	leaded annealed pattern glass (Flemish)		
			3.76 by 7.95 inch and 4.32 by 9.86 inch diamonds	25"	by 67"
			3.24 by 8.01 inch diamond	22"	by 72"
			3.24 by 8.07 inch diamond	23"	by 72"

* * * * *

CLASSIFIED TEMPERED GLASS PATTERNS

1/8 inch shallow

(01) P-516	(02) Luxlite	(03) Factrolite	(09) Spray Lite	(32) Muralex
(34) Velvex	(36) Ribbed	(37) Aquatex	(38) Finetex	(39) Industrex

1/8 inch medium

(04) Rattan	(05) Cotswold	(06) Patchwork	(07) Burlap	(08) Smooth Rough
(11) Flemish	(31) Skytex	(33) Seashell	(35) Flax	(52) Pattern 73
(56) Syenite	(57) Pattern 229			

1/8 inch deep

(10) Autumn

5/32 inch shallow

(59) Luxlite	(60) Factrolite	(64) Spray Lite	(70) Muralex	(72) Velvex
(74) Ribbed	(75) Aquatex	(76) Finetex	(81) Pattern 6	

5/32 inch medium

(61) Cotswold	(62) Burlap	(63) Smooth Rough	(66) Flemish	(69) Skytex
(71) Seashell	(73) Flax	(77) Pattern 73	(78) Syenite	(79) Pattern 229
(80) Pattern 76				

5/32 inch deep

(65) Autumn	(67) Oceanic	(68) Roundel
-------------	--------------	--------------

3/16 inch shallow

(50) Pattern 62	(51) P-516	(54) Shower lite
-----------------	------------	------------------

3/16 inch medium

(58) Pattern 76

3/16 inch deep

(12) Oceanic	(13) Roundel	(41) Lozenge
--------------	--------------	--------------

7/32 inch shallow

(14) Velvex	(15) Muralex	(16) Industrex	(17) Aquatex	(18) Pattern 100
(19) Pattern 6	(20) Pattern 62	(21) Spray Lite	(22) Burlap	(23) Factrolite
(24) Satinlite	(25) Luxlite	(26) J-3	(27) P-516	(28) Smooth Rough
(30) Cascade	(42) Pluralite	(44) Flax	(46) Skytex	(55) Textured Plat

7/32 inch medium

(43) Seashell	(45) Beadex	(47) Syenite	(48) Flemish	(49) Textured Line
---------------	-------------	--------------	--------------	--------------------

7/32 inch deep

(29) Lozenge	(53) Broad Lite
--------------	-----------------

CERTIFIED PRODUCTS BY PRODUCT TYPE

FOR LISTING BY MANUFACTURING PLANT, PLEASE SEE PAGE 10

TEMPERED TRANSPARENT GLASS

1/8 inch tempered transparent glass

ASG Industries, Inc.; Greenland, Tennessee	SGCC-598	Unlimited size
Anglass Industries, Inc.; San Fernando, California	SGCC-520	Unlimited size
Artistic Glass Products Company; Trumbauersville, Pennsylvania	SGCC-583	16" by 19"
M. L. Burke Company; Cornwells Heights, Pennsylvania	SGCC-415	Unlimited size
C-E Glass; Carson, California	SGCC-453	Unlimited size
C-E Glass; Cinnaminson, New Jersey	SGCC-489	Unlimited size
C-E Glass; Warrenton, Missouri	SGCC-360	Unlimited size
Canadian Pittsburgh Industries, Ltd.; Owen Sound, Ontario, Canada	SGCC-251	Unlimited size
Downey Glass Company; Downey, California	SGCC-603	Unlimited size
Feather-lite Manufacturing Company; Malvern, Arkansas	SGCC-586	Unlimited size
Ford Motor Company; Dearborn, Michigan	SGCC-341	Unlimited size
Fourco Glass Company; Clarksburg, West Virginia	SGCC-297	Unlimited size
Guardian Industries Corporation; Webster, Massachusetts	SGCC-300	Unlimited size
Hamilton of Indiana, Inc.; Vincennes, Indiana	SGCC- 54	Unlimited size
LOF Glass, Inc.; Laurinburg, North Carolina	SGCC-350	Unlimited size
Minex-Poland; Sandomierz, Poland	SGCC-634	Unlimited size
Northwestern Industries, Inc.; Seattle, Washington	SGCC-478	Unlimited size
Ohio Plate Glass Company; Lewisburg, Ohio	SGCC-187	Unlimited size
PPG Industries, Inc.; Carlisle, Pennsylvania	SGCC-250	Unlimited size
PPG Industries, Inc.; Crestline, Ohio	SGCC- 60	Unlimited size
PPG Industries, Inc.; Fresno, California	SGCC-295	Unlimited size
PPG Industries, Inc.; Mt. Zion, Illinois	SGCC- 59	Unlimited size
Safelite Industries; Wichita, Kansas	SGCC-225	Unlimited size
Vidrierias De Llodio, S. A.; Alava, Spain	SGCC-286	Unlimited size
Vidrios Securit, S. A.; Barranquilla, Colombia	SGCC-574	Unlimited size

5/32 inch tempered transparent glass (32 ounce)

C-E Glass; Cinnaminson, New Jersey	SGCC-503	Unlimited size
Doulton Tempered Glass, Ltd.; Bradford, England	SGCC-600	Unlimited size
Ford Motor Company; Dearborn, Michigan	SGCC-396	Unlimited size
LOF Glass, Inc.; Laurinburg, North Carolina	SGCC-545	Unlimited size
Northwestern Industries, Inc.; Seattle, Washington	SGCC-670	Unlimited size
PPG Industries, Inc.; Carlisle, Pennsylvania	SGCC-675	Unlimited size
PPG Industries, Inc.; Fresno, California	SGCC-676	Unlimited size
Romsit; Medias, Romania	SGCC-682	Unlimited size
Vidrierias De Llodio, S. A.; Alava, Spain	SGCC-448	Unlimited size

3/16 inch tempered transparent glass

ASG Industries, Inc.; Greenland, Tennessee	SGCC-220	Unlimited size
ASG Industries, Inc.; Kingsport, Tennessee	SGCC- 28	Unlimited size
Armour Laminated Glass Company, Inc.; Santa Fe Springs, California	SGCC-625	Unlimited size
Artistic Glass Products Company; Trumbauersville, Pennsylvania	SGCC-584	18" by 24"
M. L. Burke Company; Cornwells Heights, Pennsylvania	SGCC-274	Unlimited size
C-E Glass; Atlanta, Georgia	SGCC-667	Unlimited size
C-E Glass; Carson, California	SGCC-410	Unlimited size
C-E Glass; Cinnaminson, New Jersey	SGCC-245	Unlimited size
C-E Glass; Lancaster, Ohio; Slocum Street	SGCC-330	30" by 39"
C-E Glass; Miami, Florida	SGCC- 76	Unlimited size
C-E Glass; Tampa, Florida	SGCC-385	Unlimited size
C-E Glass; Warrenton, Missouri	SGCC-336	Unlimited size
Cal-Temp; Santa Fe Springs, California	SGCC-637	Unlimited size
Canadian Pittsburgh Industries, Ltd.; Owen Sound, Ontario, Canada	SGCC-209	Unlimited size

July 1, 1977; SGCC 21

CERTIFIED PRODUCTS BY PRODUCT TYPE

FOR LISTING BY MANUFACTURING PLANT, PLEASE SEE PAGE 10

3/16 inch tempered transparent glass - continued

Carolina Processed Glass, Inc.; Rock Hill, South Carolina	SGCC-672	Unlimited size
Chromalloy-Safetee Glass Division; King of Prussia, Pennsylvania	SGCC-526	Unlimited size
Downey Glass Company; Downey, California	SGCC-606	Unlimited size
Downey Glass Company; Los Angeles, California	SGCC-630	Unlimited size
Falconer Plate Glass Corporation; Falconer, New York	SGCC-663	Unlimited size
Feather-lite Manufacturing Company; Malvern, Arkansas	SGCC-610	Unlimited size
Ford Motor Company; Dearborn, Michigan	SGCC-342	Unlimited size
Fourco Glass Company; Clarksburg, West Virginia	SGCC-291	Unlimited size
General Glass Imports Corporation; Medias, Romania	SGCC-671	Unlimited size
Guardian Industries Corporation; Carleton, Michigan	SGCC-631	Unlimited size
Guardian Industries Corporation; Fort Lauderdale, Florida	SGCC-633	Unlimited size
Guardian Industries Corporation; Torrance, California	SGCC-409	Unlimited size
Guardian Industries Corporation; Webster, Massachusetts	SGCC-665	Unlimited size
Hamilton of Indiana, Inc.; Vincennes, Indiana	SGCC- 56	Unlimited size
LOF Glass, Inc.; Laurinburg, North Carolina	SGCC-351	Unlimited size
Libbey-Owens-Ford Company; Rossford, Ohio	SGCC-386	Unlimited size
Minex-Poland; Sandomierz, Poland	SGCC-646	Unlimited size
Northwestern Industries, Inc.; Seattle, Washington	SGCC-479	Unlimited size
Ohio Plate Glass Company; Lewisburg, Ohio	SGCC-185	Unlimited size
PPG Industries, Inc.; Baltimore, Maryland	SGCC-454	Unlimited size
PPG Industries, Inc.; Carlisle, Pennsylvania	SGCC-249	Unlimited size
PPG Industries, Inc.; Chicago, Illinois	SGCC-266	Unlimited size
PPG Industries, Inc.; Crestline, Ohio	SGCC- 65	Unlimited size
PPG Industries, Inc.; Dallas, Texas	SGCC-400	Unlimited size
PPG Industries, Inc.; Ford City, Pennsylvania	SGCC- 61	Unlimited size
PPG Industries, Inc.; Fresno, California	SGCC- 64	Unlimited size
PPG Industries, Inc.; Miami, Florida	SGCC-195	Unlimited size
PPG Industries, Inc.; Mt. Zion, Illinois	SGCC- 63	Unlimited size
Romsit; Medias, Romania	SGCC-681	Unlimited size
Sun Valley Tempered Glass Company; Oxnard, California	SGCC-642	Unlimited size
Taylor Products, Inc.; Payne, Ohio	SGCC-190	Unlimited size
Tempered Glass Corporation; Tampa, Florida	SGCC-629	Unlimited size
Tempglass, Inc.; Perrysburg, Ohio	SGCC-592	Unlimited size
Temp-Safe, Inc.; Edmond, Oklahoma	SGCC-440	Unlimited size
Texas Tempered Glass Company; Houston, Texas	SGCC-110	Unlimited size
Tuf-flex Glass, Inc.; Atlanta, Georgia	SGCC-320	Unlimited size
Tuf-flex Glass, Inc.; Elmhurst, Illinois	SGCC-257	Unlimited size
Tuf-flex Glass, Inc.; Irving, Texas	SGCC-389	Unlimited size
Tuf-flex Glass, Inc.; Saddle Brook, New Jersey	SGCC-525	Unlimited size
Tuf-flex Glass, Inc.; Union City, California	SGCC-490	Unlimited size
Tyre Brothers Glass Company; Los Angeles, California	SGCC-252	Unlimited size
Vidrierias De Llodio, S. A.; Alava, Spain	SGCC- 38	Unlimited size
Viracon, Inc.; Owatonna, Minnesota	SGCC-227	Unlimited size
Virginia Glass Products Corporation; Martinsville, Virginia	SGCC- 12	Unlimited size

7/32 inch tempered transparent glass

C-E Glass; Lancaster, Ohio; Stocum Street	SGCC-331	30" by 39"
Guardian Industries Corporation; Fort Lauderdale, Florida	SGCC- 39	Unlimited size
Guardian Industries Corporation; Torrance, California	SGCC-425	Unlimited size
Ohio Plate Glass Company; Lewisburg, Ohio	SGCC-279	Unlimited size
Taylor Products, Inc.; Payne, Ohio	SGCC-192	Unlimited size
Vidrierias De Llodio, S. A.; Alava, Spain	SGCC- 37	Unlimited size

CERTIFIED PRODUCTS BY PRODUCT TYPE

FOR LISTING BY MANUFACTURING PLANT, PLEASE SEE PAGE 10

1/4 inch tempered transparent glass

ASG Industries, Inc.; Greenland, Tennessee	SGCC- 89	Unlimited size
ASG Industries, Inc.; Kingsport, Tennessee	SGCC- 24	Unlimited size
Armour Laminated Glass Company, Inc.; Brooklyn, New York	SGCC-650	Unlimited size
Armour Laminated Glass Company, Inc.; Santa Fe Springs, California	SGCC-205	Unlimited size
Artistic Glass Products Company; Trumbauersville, Pennsylvania	SGCC-585	18" by 24"
M. L. Burke Company; Cornwells Heights, Pennsylvania	SGCC-615	Unlimited size
C-E Glass; Atlanta, Georgia	SGCC-108	Unlimited size
C-E Glass; Carson, California	SGCC-411	Unlimited size
C-E Glass; Cinnaminson, New Jersey	SGCC-246	Unlimited size
C-E Glass; Miami, Florida	SGCC- 49	Unlimited size
C-E Glass; Tampa, Florida	SGCC- 47	Unlimited size
C-E Glass; Warrenton, Missouri	SGCC-361	Unlimited size
Cal-Temp; Santa Fe Springs, California	SGCC-638	Unlimited size
Carolina Processed Glass, Inc.; Rock Hill, South Carolina	SGCC-673	Unlimited size
Chromalloy-Safetee Glass Division; King of Prussia, Pennsylvania	SGCC-157	Unlimited size
Doulton Tempered Glass, Ltd.; Bradford, England	SGCC-601	Unlimited size
Downey Glass Company; Downey, California	SGCC-609	Unlimited size
Downey Glass Company; Los Angeles, California	SGCC-514	Unlimited size
Falconer Plate Glass Corporation; Falconer, New York	SGCC-308	Unlimited size
Ford Motor Company; Dearborn, Michigan	SGCC-397	Unlimited size
Fourco Glass Company; Clarksburg, West Virginia	SGCC-293	Unlimited size
Guardian Industries Corporation; Carleton; Michigan	SGCC-131	Unlimited size
Guardian Industries Corporation; Fort Lauderdale, Florida	SGCC- 40	Unlimited size
Guardian Industries Corporation; Torrance, California	SGCC- 43	Unlimited size
Guardian Industries Corporation; Webster, Massachusetts	SGCC-662	Unlimited size
Hamilton of Indiana, Inc.; Vincennes, Indiana	SGCC- 57	Unlimited size
LOF Glass, Inc.; Laurinburg, North Carolina	SGCC-352	Unlimited size
Libbey-Owens-Ford Company; Rossford, Ohio	SGCC- 19	Unlimited size
Northwestern Industries, Inc.; Seattle, Washington	SGCC-481	Unlimited size
Ohio Plate Glass Company; Lewisburg, Ohio	SGCC-186	Unlimited size
PPG Industries, Inc.; Baltimore, Maryland	SGCC-455	Unlimited size
PPG Industries, Inc.; Carlisle, Pennsylvania	SGCC-382	Unlimited size
PPG Industries, Inc.; Chicago, Illinois	SGCC-267	Unlimited size
PPG Industries, Inc.; Crestline, Ohio	SGCC-102	26 3/4" by 72"
PPG Industries, Inc.; Dallas, Texas	SGCC-402	Unlimited size
PPG Industries, Inc.; Ford City, Pennsylvania	SGCC- 70	Unlimited size
PPG Industries, Inc.; Fresno, California	SGCC- 73	Unlimited size
PPG Industries, Inc.; Miami, Florida	SGCC-194	Unlimited size
Sun Valley Tempered Glass Company; Oxnard, California	SGCC-643	Unlimited size
Taylor Products, Inc.; Payne, Ohio	SGCC-189	Unlimited size
Tempered Glass Corporation; Tampa, Florida	SGCC-337	Unlimited size
Tempglass, Inc.; Perrysburg, Ohio	SGCC-593	Unlimited size
Temp-Safe, Inc.; Edmond, Oklahoma	SGCC-441	Unlimited size
Texas Tempered Glass Company; Houston, Texas	SGCC-137	Unlimited size
Tuf-flex Glass, Inc.; Atlanta, Georgia	SGCC-321	Unlimited size
Tuf-flex Glass, Inc.; Elmhurst, Illinois	SGCC-229	Unlimited size
Tuf-flex Glass, Inc.; Irving, Texas	SGCC-390	Unlimited size
Tuf-flex Glass, Inc.; Saddle Brook, New Jersey	SGCC-298	Unlimited size
Tuf-flex Glass, Inc.; Union City, California	SGCC-491	Unlimited size
Tyre Brothers Glass Company; Los Angeles, California	SGCC-253	Unlimited size
Viracon, Inc.; Owatonna, Minnesota	SGCC-228	Unlimited size
Virginia Glass Products Corporation; Martinsville, Virginia	SGCC- 14	Unlimited size

CERTIFIED PRODUCTS BY PRODUCT TYPE

FOR LISTING BY MANUFACTURING PLANT, PLEASE SEE PAGE 10

5/16 inch tempered transparent glass

LOF Glass, Inc.; Laurinburg, North Carolina	SGCC-373	Unlimited size
Libbey-Owens-Ford Company; Rossford, Ohio	SGCC-464	Unlimited size

3/8 inch tempered transparent glass

ASG Industries, Inc.; Greenland, Tennessee	SGCC- 90	Unlimited size
C-E Glass; Atlanta, Georgia	SGCC-371	Unlimited size
C-E Glass; Carson, California	SGCC-412	Unlimited size
C-E Glass; Cinnaminson, New Jersey	SGCC-345	Unlimited size
Cal-Temp; Santa Fe Springs, California	SGCC-639	Unlimited size
Carolina Processed Glass, Inc.; Rock Hill, South Carolina	SGCC-674	30" by 72"
Chromalloy-Safetee Glass Division; King of Prussia, Pennsylvania	SGCC-181	Unlimited size
Downey Glass Company; Los Angeles, California	SGCC-515	Unlimited size
Falconer Plate Glass Corporation; Falconer, New York	SGCC-612	Unlimited size
Guardian Industries Corporation; Carleton, Michigan	SGCC-160	Unlimited size
Guardian Industries Corporation; Fort Lauderdale, Florida	SGCC- 41	Unlimited size
Guardian Industries Corporation; Torrance, California	SGCC- 97	Unlimited size
Guardian Industries Corporation; Webster, Massachusetts	SGCC-471	Unlimited size
Hamilton of Indiana, Inc.; Vincennes, Indiana	SGCC-127	Unlimited size
LOF Glass, Inc.; Laurinburg, North Carolina	SGCC-374	Unlimited size
Libbey-Owens-Ford Company; Rossford, Ohio	SGCC-449	Unlimited size
Northwestern Industries, Inc.; Seattle, Washington	SGCC-500	Unlimited size
PPG Industries, Inc.; Baltimore, Maryland	SGCC-474	Unlimited size
PPG Industries, Inc.; Chicago, Illinois	SGCC-647	Unlimited size
PPG Industries, Inc.; Dallas, Texas	SGCC-405	Unlimited size
PPG Industries, Inc.; Ford City, Pennsylvania	SGCC- 74	Unlimited size
PPG Industries, Inc.; Miami, Florida	SGCC-196	Unlimited size
Tempered Glass Corporation; Tampa, Florida	SGCC-348	Unlimited size
Tempglass, Inc.; Perrysburg, Ohio	SGCC-594	Unlimited size
Temp-Safe, Inc.; Edmond, Oklahoma	SGCC-532	Unlimited size
Texas Tempered Glass Company; Houston, Texas	SGCC-668	Unlimited size
Tuf-flex Glass, Inc.; Atlanta, Georgia	SGCC-322	Unlimited size
Tuf-flex Glass, Inc.; Elmhurst, Illinois	SGCC-258	Unlimited size
Tuf-flex Glass, Inc.; Irving, Texas	SGCC-391	Unlimited size
Tuf-flex Glass, Inc.; Saddle Brook, New Jersey	SGCC-314	Unlimited size
Tuf-flex Glass, Inc.; Union City, California	SGCC-482	Unlimited size
Tyre Brothers Glass Company; Los Angeles, California	SGCC-254	Unlimited size
Virginia Glass Products Corporation; Martinsville, Virginia	SGCC- 93	Unlimited size

1/2 inch tempered transparent glass

ASG Industries, Inc.; Greenland, Tennessee	SGCC- 91	Unlimited size
Armour Laminated Glass Company, Inc.; Brooklyn, New York	SGCC-651	Unlimited size
C-E Glass; Carson, California	SGCC-413	Unlimited size
C-E Glass; Cinnaminson, New Jersey	SGCC-346	Unlimited size
Cal-Temp; Santa Fe Springs, California	SGCC-640	Unlimited size
Chromalloy-Safetee Glass Division; King of Prussia, Pennsylvania	SGCC-182	Unlimited size
Downey Glass Company; Los Angeles, California	SGCC-516	Unlimited size
Falconer Plate Glass Corporation; Falconer, New York	SGCC-311	Unlimited size
Guardian Industries Corporation; Carleton, Michigan	SGCC-263	Unlimited size
Guardian Industries Corporation; Torrance, California	SGCC- 98	Unlimited size
Hamilton of Indiana, Inc.; Vincennes, Indiana	SGCC-128	Unlimited size
LOF Glass, Inc.; Laurinburg, North Carolina	SGCC-375	Unlimited size
Libbey-Owens-Ford Company; Rossford, Ohio	SGCC-150	Unlimited size

CERTIFIED PRODUCTS BY PRODUCT TYPE

FOR LISTING BY MANUFACTURING PLANT, PLEASE SEE PAGE 10

1/2 inch tempered transparent glass - continued

Northwestern Industries, Inc.; Seattle, Washington	SGCC-501	Unlimited size
PPG Industries, Inc.; Baltimore, Maryland	SGCC-475	Unlimited size
PPG Industries, Inc.; Chicago, Illinois	SGCC-648	Unlimited size
PPG Industries, Inc.; Dallas, Texas	SGCC-403	Unlimited size
PPG Industries, Inc.; Ford City, Pennsylvania	SGCC- 75	Unlimited size
PPG Industries, Inc.; Miami, Florida	SGCC-200	Unlimited size
Tempered Glass Corporation; Tampa, Florida	SGCC-338	Unlimited size
Tempglass, Inc.; Perrysburg, Ohio	SGCC-595	Unlimited size
Temp-Safe, Inc.; Edmond, Oklahoma	SGCC-488	Unlimited size
Texas Tempered Glass Company; Houston, Texas	SGCC-669	Unlimited size
Tuf-flex Glass, Inc.; Atlanta, Georgia	SGCC-323	Unlimited size
Tuf-flex Glass, Inc.; Elmhurst, Illinois	SGCC-270	Unlimited size
Tuf-flex Glass, Inc.; Irving, Texas	SGCC-392	Unlimited size
Tuf-flex Glass, Inc.; Saddle Brook, New Jersey	SGCC-315	Unlimited size
Tuf-flex Glass, Inc.; Union City, California	SGCC-483	Unlimited size
Tyre Brothers Glass Company; Los Angeles, California	SGCC-255	Unlimited size
Virginia Glass Products Corporation; Martinsville, Virginia	SGCC- 94	Unlimited size

5/8 inch tempered transparent glass

Libbey-Owens-Ford Company; Rossford, Ohio	SGCC-544	Unlimited size
---	----------	----------------

3/4 inch tempered transparent glass

ASG Industries, Inc.; Greenland, Tennessee	SGCC-547	Unlimited size
Falconer Plate Glass Corporation; Falconer, New York	SGCC-664	Unlimited size
Libbey-Owens-Ford Company; Rossford, Ohio	SGCC-151	Unlimited size
PPG Industries, Inc.; Ford City, Pennsylvania	SGCC-248	Unlimited size
Virginia Glass Products Corporation; Martinsville, Virginia	SGCC- 95	Unlimited size

7/8 inch tempered transparent glass

Libbey-Owens-Ford Company; Rossford, Ohio	SGCC-444	Unlimited size
---	----------	----------------

TEMPERED PATTERN GLASS

1/8 inch tempered pattern glass (shallow patterns)

ASG Industries, Inc.; Greenland, Tennessee	SGCC-587	Unlimited size
ASG Industries, Inc.; Kingsport, Tennessee	SGCC-141	Unlimited size
Armour Laminated Glass Company, Inc.; Santa Fe Springs, California	SGCC-657	Unlimited size
M. L. Burke Company; Cornwells Heights, Pennsylvania	SGCC-644	Unlimited size
C-E Glass; Carson, California	SGCC-452	Unlimited size
C-E Glass; Warrenton, Missouri	SGCC-511	30" by 70"
Downey Glass Company; Downey, California	SGCC-604	Unlimited size
Hamilton of Indiana, Inc.; Vincennes, Indiana	SGCC-621	Unlimited size
Ohio Plate Glass Company; Lewisburg, Ohio	SGCC-203	Unlimited size

1/8 inch tempered pattern glass (medium patterns)

Downey Glass Company; Downey, California	SGCC-605	Unlimited size
Ohio Plate Glass Company; Lewisburg, Ohio	SGCC-654	Unlimited size

5/32 inch tempered pattern glass (shallow patterns)

Minex-Poland; Sandomierz, Poland	SGCC-635	Unlimited size
----------------------------------	----------	----------------

CERTIFIED PRODUCTS BY PRODUCT TYPE

FOR LISTING BY MANUFACTURING PLANT, PLEASE SEE PAGE 10

5/32 inch tempered pattern glass (medium patterns)

M. L. Burke Company; Cornwells Heights, Pennsylvania	SGCC-659	Unlimited size
C-E Glass; Carson, California	SGCC-618	Unlimited size
PPG Industries, Inc.; Fresno, California	SGCC-384	Unlimited size

3/16 inch tempered pattern glass (shallow patterns)

C-E Glass; Carson, California	SGCC-414	Unlimited size
Downey Glass Company; Downey, California	SGCC-607	Unlimited size
Downey Glass Company; Los Angeles, California	SGCC-677	Unlimited size
Ohio Plate Glass Company; Lewisburg, Ohio	SGCC-188	Unlimited size

3/16 inch tempered pattern glass (deep patterns)

Ohio Plate Glass Company; Lewisburg, Ohio	SGCC-328	Unlimited size
PPG Industries, Inc.; Crestline, Ohio	SGCC-446	Unlimited size

7/32 inch tempered pattern glass (shallow patterns)

ASG Industries, Inc.; Greenland, Tennessee	SGCC-588	Unlimited size
ASG Industries, Inc.; Kingsport, Tennessee	SGCC- 31	Unlimited size
Armour Laminated Glass Company, Inc.; Santa Fe Springs, California	SGCC-206	Unlimited size
M. L. Burke Company; Cornwells Heights, Pennsylvania	SGCC-589	Unlimited size
C-E Glass; Atlanta, Georgia	SGCC-125	Unlimited size
C-E Glass; Carson, California	SGCC-619	Unlimited size
C-E Glass; Cinnaminson, New Jersey	SGCC-265	Unlimited size
C-E Glass; Miami, Florida	SGCC- 50	Unlimited size
C-E Glass; Tampa, Florida	SGCC-201	Unlimited size
C-E Glass; Warrenton, Missouri	SGCC-344	Unlimited size
Cal-Temp; Santa Fe Springs, California	SGCC-641	Unlimited size
Downey Glass Company; Downey, California	SGCC-608	Unlimited size
Downey Glass Company; Los Angeles, California	SGCC-678	Unlimited size
Guardian Industries Corporation; Fort Lauderdale, Florida	SGCC-617	Unlimited size
Guardian Industries Corporation; Torrance, California	SGCC-264	Unlimited size
Hamilton of Indiana, Inc.; Vincennes, Indiana	SGCC-129	Unlimited size
Minex-Poland; Jaroszwiec, Poland	SGCC-140	Unlimited size
Northwestern Industries, Inc.; Seattle, Washington	SGCC-502	Unlimited size
Ohio Plate Glass Company; Lewisburg, Ohio	SGCC-562	Unlimited size
PPG Industries, Inc.; Baltimore, Maryland	SGCC-456	Unlimited size
PPG Industries, Inc.; Chicago, Illinois	SGCC-653	Unlimited size
PPG Industries, Inc.; Dallas, Texas	SGCC-404	Unlimited size
PPG Industries, Inc.; Miami, Florida	SGCC-219	Unlimited size
Sun Valley Tempered Glass Company; Oxnard, California	SGCC-690	Unlimited size
Taylor Products, Inc.; Payne, Ohio	SGCC-191	Unlimited size
Tempered Glass Corporation; Tampa, Florida	SGCC-421	Unlimited size
Tempglass, Inc.; Perrysburg, Ohio	SGCC-597	Unlimited size
Tyre Brothers Glass Company; Los Angeles, California	SGCC-256	Unlimited size
Viracon, Inc.; Owatonna, Minnesota	SGCC-463	Unlimited size
Virginia Glass Products Corporation; Martinsville, Virginia	SGCC- 92	Unlimited size

7/32 inch tempered pattern glass (medium patterns)

C-E Glass; Carson, California	SGCC-620	Unlimited size
Ohio Plate Glass Company; Lewisburg, Ohio	SGCC-626	Unlimited size

CERTIFIED PRODUCTS BY PRODUCT TYPE

FOR LISTING BY MANUFACTURING PLANT, PLEASE SEE PAGE 10

LAMINATED TRANSPARENT GLASS

SS/SS laminated transparent glass

Libbey-Owens-Ford Company; East Toledo, Ohio (0.015 inch plastic) SGCC-450 Unlimited size

SS/DS laminated transparent glass

Libbey-Owens-Ford Company; East Toledo, Ohio (0.015 inch plastic) SGCC-451 Unlimited size

7/32 inch laminated transparent glass

ASG Industries, Inc.; Kingsport, Tennessee (0.015 inch plastic) SGCC- 27 Unlimited size

Chromalloy-Safetee Glass Division; King of Prussia, Pennsylvania
(0.015 inch plastic) SGCC-378 Unlimited size

Globe-Amerada Glass Company; Elk Grove Village, Illinois
(0.015 inch plastic) SGCC-445 Unlimited size

Guardian Industries Corporation; Upper Sandusky, Ohio
(0.015 inch plastic) SGCC-458 Unlimited size

Texas Tempered Glass Company; Houston, Texas (0.015 inch plastic) SGCC-570 Unlimited size

1/4 inch laminated transparent glass

ASG Industries, Inc.; Kingsport, Tennessee (0.015 inch plastic) SGCC- 26 Unlimited size

Armour Laminated Glass Company, Inc.; Brooklyn, New York
(0.015 inch plastic) SGCC-533 Unlimited size

Armour Laminated Glass Company, Inc.; Santa Fe Springs, California
(0.030 inch plastic) SGCC-357 Unlimited size

Buchmin Industries; Reedley, California (0.015 inch plastic) SGCC-564 Unlimited size

Central Glass Company, Ltd.; Tokyo, Japan (0.015 inch plastic) SGCC-553 Unlimited size

Chromalloy-Safetee Glass Division; King of Prussia, Pennsylvania
(0.015 inch plastic) SGCC-379 Unlimited size

Cristales Inastillables De Mexico, S. A.; Mexico City, Mexico
(0.015 inch plastic) SGCC-658 Unlimited size

Guardian Industries Corporation; Upper Sandusky, Ohio
(0.015 inch plastic) SGCC-487 Unlimited size

Libbey-Owens-Ford Company; East Toledo, Ohio (0.015 inch plastic) SGCC- 82 Unlimited size

PPG Industries, Inc.; Creighton, Pennsylvania (0.015 inch plastic) SGCC-114 Unlimited size

Safelite Industries; Denver, Colorado (0.015 inch plastic) SGCC-237 Unlimited size

Viracon, Inc.; Owatonna, Minnesota (0.015 inch plastic) SGCC-232 Unlimited size

3/8 inch laminated transparent glass

Armour Laminated Glass Company, Inc.; Brooklyn, New York
(0.015 inch plastic) SGCC-652 Unlimited size

Chromalloy-Safetee Glass Division; King of Prussia, Pennsylvania
(0.015 inch plastic) SGCC-380 Unlimited size

1/8:1/4 inch laminated transparent glass

ASG Industries, Inc.; Kingsport, Tennessee (0.015 inch plastic) SGCC-499 Unlimited size

7/16 inch laminated transparent glass

Sierracin Corporation; Sylmar, California
0.100 chemically tempered glass: 0.060 PVB:
0.125 polycarbonate: 0.060 PVB:
0.100 chemically tempered glass SGCC-666 Unlimited size

CERTIFIED PRODUCTS BY PRODUCT TYPE

FOR LISTING BY MANUFACTURING PLANT, PLEASE SEE PAGE 10

1/2 inch laminated transparent glass

Armour Laminated Glass Company, Inc.; Santa Fe Springs, California (0.030 inch plastic)	SGCC-358	Unlimited size
Chromalloy-Safetee Glass Division; King of Prussia, Pennsylvania (0.015 inch plastic)	SGCC-381	Unlimited size
Libbey-Owens-Ford Company; East Toledo, Ohio (0.030 inch plastic)	SGCC-614	Unlimited size

TRANSPARENT WIRED GLASS

1/4 inch polished wired glass

ASG Industries, Inc.; Kingsport, Tennessee (Pinstripe)	SGCC-683	Unlimited size
ASG Industries, Inc.; Kingsport, Tennessee (3/4 inch diamond)	SGCC-632	Unlimited size
Central Glass Company Ltd.; Tokyo, Japan (3/4 inch diamond mesh)	SGCC-508	Unlimited size
Central Glass Company, Ltd.; Tokyo, Japan (1/2 inch square mesh)	SGCC-543	Unlimited size

PATTERN WIRED GLASS

7/32 inch pattern wired glass

ASG Industries, Inc.; Kingsport, Tennessee (Pinstripe; 1/2 inch parallel) (Finetex)	SGCC-684	Unlimited size
--	----------	----------------

SAFETY PLASTIC SHEET

0.060 inch and greater thicknesses polycarbonate

Sheffield Plastics, Inc.; Sheffield, Massachusetts (extruded; smooth)	SGCC-359	Unlimited size
--	----------	----------------

0.060 inch through 0.125 inch acrylic

K-S-H, Inc.; Xenia, Ohio (extruded; smooth)	SGCC-136	Unlimited size
---	----------	----------------

0.080 inch and greater thicknesses acrylic

Mitsubishi Rayon Company, Ltd.; Ohtake, Japan (continuously cast; smooth)	SGCC-496	Unlimited size
Rotuba Extruders, Inc.; Linden, New Jersey (extruded; smooth)	SGCC-316	Unlimited size
Swedcast Corporation; Florence, Kentucky (continuously cast; smooth) (SWEDGLAZE SG-B)	SGCC-560	Unlimited size

0.080 inch through 0.125 inch acrylic

Flex-O-Glass, Inc.; Dixon, Illinois (extruded; smooth)	SGCC-118	Unlimited size
K-S-H, Inc.; Tustin, California (extruded; smooth)	SGCC-573	Unlimited size
Plaskolite, Inc.; Columbus, Ohio (extruded; smooth)	SGCC-152	Unlimited size
Sheffield Plastics, Inc.; Sheffield, Massachusetts (extruded; smooth)	SGCC-173	Unlimited size

0.100 inch acrylic

Manchester Products Company; Chatsworth, California (extruded; smooth)	SGCC-567	Unlimited size
---	----------	----------------

LEADED GLASS

1/8 inch annealed transparent glass

Visador Company; Jasper, Texas 4.20 by 9.89 inch and 3.76 by 7.95 inch diamonds	SGCC-470	25" by 67"
--	----------	------------

1/8 inch annealed pattern glass

Visador Company; Jasper, Texas (Cathedral) 3.76 by 7.95 and 4.35 by 9.85 inch diamonds 3.24 by 8.04 inch diamond	SGCC-509	25" by 67" 22" by 72"
--	----------	--------------------------

CERTIFIED PRODUCTS BY PRODUCT TYPE

FOR LISTING BY MANUFACTURING PLANT, PLEASE SEE PAGE 10

3/16 inch annealed pattern glass

Visador Company; Jasper, Texas (Flemish)

3.76 by 7.95 and 4.32 by 9.86 inch diamonds

3.24 by 8.01 inch diamond

3.24 by 8.07 inch diamond

SGCC-510

25" by 67"

22" by 72"

23" by 72"

SAFETY PLASTIC SHEET FOR INDOOR USE ONLY

0.100 inch through 3/16 inch plastic

K-S-H, Inc.; Crestwood, Missouri (pattern; extruded;
indoor use only) (Glacial, Calypso, Roundel)

SGCC- 99 Unlimited size

K-S-H, Inc.; Tustin, California (pattern; extruded;
indoor use only; (Calypso, Glacial, Starlite, Roundel)

SGCC-221 Unlimited size

* * * * *

SGCC LABEL REQUIREMENTS

The SGCC certification label must be permanently marked on each piece of safety glazing material or else it is not certified by SGCC. The typical labels reproduced in this certified products directory are the same size that you will find on each piece of safety glazing material.

The permanent label must contain the SGCC number, ANSI Z97.1-1975, nominal thickness, and the letter U or L indicating certified size.

Safety plastic sheet for indoor use only must indicate the wording "Indoor Use Only" SGCC number, nominal thickness, and the letter U or L indicating certified size.

The permanent label must contain identification of the plant in which the product was made and the name or trade mark of the participant. (The SGCC number does this by reference to this certified products directory.)

The permanent label must be affixed to certified products only at the time and place of manufacture.

The permanent label must be affixed only to safety glazing materials of the participant's own manufacture, which has been certified by SGCC.

The permanent label must not be sold, transferred or otherwise disposed of in any manner other than being affixed to the participant's certified production.

The permanent label must not be affixed to any product from which certification has been withdrawn or which is produced with a process basically different from the one used when certification was obtained.

* * * * *

EXAMPLE OF PARTICIPANT'S TYPICAL LABEL

ASG INDUSTRIES, INC.
P. O. Box 88
Kingsport, Tennessee 37662

▲▲
TRU-TEMP
16 CFR 1201.CII
ANSI Z97.1 1975
1/4U SGCC-24
ASG 001

BUCHMIN INDUSTRIES
1485 East Curtis Avenue
Reedley, California 93654

Tentative label
ANSI Z97.1-1975
SGCC-564 1/4 U

ANGLASS INDUSTRIES, INC.
12364 Gladstone Avenue
San Fernando, California 91342

TEMPERED
SAFETY GLASS
ANGLASS
CALIFORNIA, USA
ANSI Z97.1-1975
SGCC-520 1/8U

M. L. BURKE COMPANY
33204 Western Avenue
Union City, California 94587

MLB TEMP
SAFETY TEMPERED
GLASS
ANSI-Z97.1-1975
SGCC-274 3/16U

C-E GLASS
825 Hylton Road
Pennsauken, New Jersey 08110

ARMOUR LAMINATED GLASS COMPANY, INC.
9401 Ann Street
Santa Fe Springs, California 90670

TEMPERED SAFETY GLASS
[^A_LG] SGCC 625
3/16 U
ANSI Z97.1-1975

ARM-R-CLAD
®
GE GLASS
SAFETY TEMPERED
ANSI Z97.1-1975 .187U
SGCC 410 NDB

ARTISTIC GLASS PRODUCTS COMPANY
P. O. Box 38
Quakertown, Pennsylvania 18951

AGP 3-16 L
ANSI-Z97.1 1975
SGCC 584

CAL-TEMP; CALIFORNIA GLASS DISTRIBUTORS
9010 South Norwalk Boulevard
Santa Fe Springs, California 90670

CAL TEMP
TEMPERED SAFETY,
ANSI-Z 97.1—1975
3/16 U—SGCC-637

EXAMPLE OF PARTICIPANT'S TYPICAL LABEL

CANADIAN PITTSBURGH INDUSTRIES, LTD.
1299 20th Street, East
Owen Sound, Ontario, Canada

Tentative label
ANSI Z97.1-1975
SGCC-251 1/8U

CRISTALES INASTILLABLES DE MEXICO, S. A.
c/o Sentinel Enterprises, Inc.
2138 Biscayne Boulevard
Miami, Florida 33137

Tentative label
ANSI Z97.1-1975
SGCC-658 1/4 U

CAROLINA PROCESSED GLASS, INC.
1900 Midland Street
Rock Hill, South Carolina 29730

Tentative label
ANSI Z97.1-1975
SGCC-672 3/16U

DOULTON TEMPERED GLASS, LTD.
Ripley Road
Bradford, West Yorkshire BD47TP
England

Tentative label
ANSI Z97.1-1975
SGCC-601 1/4U

CENTRAL GLASS COMPANY, LTD.
One World Trade Center
Suite 3947
New York, New York 10048

LAMINATED SAFETY GLASS
LAMILEX

CENTRAL
ANSI Z97.1-1975 1/4-U
SGCC-553

DOWNEY GLASS COMPANY
5631 Ferguson Drive
Los Angeles, California 90022

FUL-TEMP
.188U
SGCC-606
ANSI-Z97.1
1975

CHROMALLOY SAFETEE GLASS DIVISION
250 King Manor Drive
King of Prussia, Pennsylvania 19406

TEMPERCHROM
3/16"U
SAFETEE GLASS
BY
CHROMALLOY III
ANSI-Z-97.1-1975
SGCC-526 4-76

FALCONER PLATE GLASS CORPORATION
500 South Work Street
Falconer, New York 14733

FALCONER
TEMPERED
DURASAFE
SAFETY GLASS
SGCC-311 1/2" U
ANSI Z97.1-1975

EXAMPLE OF PARTICIPANT'S TYPICAL LABEL

FEATHER-LITE MANUFACTURING COMPANY
1210 East Maple Road
Troy, Michigan 48084

FEATHER-LITE
**SAFETY
PANE**
TEMPERED SAFETY GLASS
ANSI Z 97.1-1975
SGCC-506 1/8 U 126

FLEX-O-GLASS, INC.
1100 North Cicero Avenue
Chicago, Illinois 60651

Warp
FLEX - O - GLAZE T.M.
SGCC - 11B
ACRYLIC SAFETY GLAZING
ANSI Z97.1 - 1975 .100 U
WARP BROS. CHGO. 60651


FORD MOTOR COMPANY
GLASS DIVISION
1 Parklane Boulevard
Dearborn, Michigan 48126


FORD TEMPERED
SAFETY GLASS
ANSI Z97.1-1975
SGCC 341 1/8 U
6E

FOURCO GLASS COMPANY
P.O. Box 890
Bridgeport, West Virginia 26330

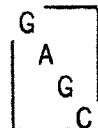
FOURCO
Cleartemp
SAFETY
HEAT TEMPERED
GLASS 1/8 U
ANSI Z97.1-1975
SGCC-297

GENERAL GLASS IMPORTS CORPORATION
270 North Avenue
New Rochelle, New York 10801


TEMPERED SAFETY GLASS
ANSI Z97.1-1975
SGCC 671 3/16" U

GLOBE-AMERADA GLASS COMPANY
2001 Greenleaf Avenue
Elk Grove Village, Illinois 60007

LAMINATED SAFETY GLASS

SGCC-445  7/32 U
ANSI Z97.1.1975

GUARDIAN INDUSTRIES CORPORATION
43043 West Nine Mile Road
Northville, Michigan 48167


GUARDIAN
SAFEGLAZE
TEMPERED SAFETY
SGCC-665
ANSI-Z97.1-1975
3/16 U
CGSB 12-GP-1

HAMILTON OF INDIANA, INC.
2000 Chestnut Street
Vincennes, Indiana 47591

TEMPER-TUF
HAMILTON OF INDIANA
ANSI Z97.1-1975 1/8U SGCC-54
TEMPERED SAFETY GLASS

EXAMPLE OF PARTICIPANT'S TYPICAL LABEL

K-S-H, INC.
10091 Manchester Road
St. Louis, Missouri 63122

ANSI Z97.1-1975
0.080U SGCC 573

LOF GLASS, INC.
P. O. Box 830
Laurinburg, North Carolina 28352



LIBBEY-OWENS-FORD COMPANY
811 Madison Avenue
Toledo, Ohio 43695



MANCHESTER PRODUCTS COMPANY
8966 Mason Avenue
Chatsworth, California 91311

Tentative label
ANSI Z97.1-1975
SGCC-567 0.100U

MINEX-POLAND
c/o M. L. Burke Company
33204 Western Avenue
Union City, California 94587

TEMPERED SAFETY GLASS
MINEX
ANSI Z97.1 - 1975
SGCC - 140 .210 U

MITSUBISHI RAYON COMPANY, LIMITED
c/o Sentinel Enterprises
2138 Biscayne Boulevard
Miami, Florida 33137

ShinkoLite® A

ANSI Z 97, 1-1975

0.080U SGCC 496

 **MITSUBISHI RAYON CO. LTD.**

NORTHWESTERN INDUSTRIES, INC.
2501 West Commodore Way
Seattle, Washington 98199

TEMPERED
SAFETY GLASS



ANSI Z97.1-1975
CGSB-12-GP-1
SGCC-479
5/16-U

OHIO PLATE GLASS COMPANY
P. O. Box 671
Lewisburg, Ohio 45338

SAFETY
TEMPERED
1/8"-U SGCC
187


OHIO
PLATE
ANSI Z-97.1 1975

EXAMPLE OF PARTICIPANT'S TYPICAL LABEL

PPG INDUSTRIES, INC.
1000 RIDC Plaza
P. O. Box 2811
Pittsburgh, Pennsylvania 15230

PPG HERCULITE K
ANSI Z-97.1-1975 1/8"-U
TEMPERED SAFETY GLASS
SGCC-295 15976

SAFELITE INDUSTRIES
P. O. Box 1879
Wichita, Kansas 67201

SOLID TEMPERED
SAFE  LITE
ANSI Z97.1-1975
1/8U SGCC 225

PLASKOLITE, INC.
1770 Joyce Avenue
Columbus, Ohio 43219

plaskolite
ACRYLIC SAFETY GLAZING
ANSI Z97.1-1975
SGCC-152 .100U


SHEFFIELD PLASTICS, INC.
Salisbury Road
Sheffield, Massachusetts 01257

ACRY-PANE
ACRYLIC SAFETY GLAZING
ANSI Z 97.1-1975
SGCC-173 .080U

ROMSIT
c/o Vitco, Inc.
31 Warren Place
Mount Vernon, New York 10550

Tentative label
ANSI Z97.1-1975
SGCC-681 3/16U


SIERRACIN CORPORATION
12780 San Fernando Road
Sylmar, California 91342

 **Sierracin/Sylmar**
Omnilite™
ANSI Z97.1 1975
SGCC-666 .100U 0577

ROTUBA EXTRUDERS, INC.
1401 Park Avenue South
Linden, New Jersey 07036

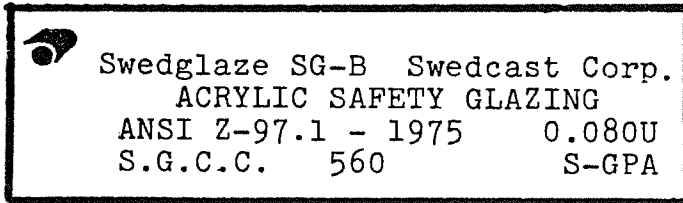
ROTUBAGLAZ®
ACRYLIC SAFETY GLAZING
ANSI Z97.1-1975
SGCC-316 .080U

SUN VALLEY TEMPERED GLASS COMPANY
906 Factory Lane
Oxnard, California 93032


SUN VALLEY
TEMPERED
SGCC 643 1/8U
7-77
AM-TUF
ANSI Z97.1 1975

EXAMPLE OF PARTICIPANT'S TYPICAL LABEL

SWEDCAST CORPORATION
7350 Empire Drive
Florence, Kentucky 41042



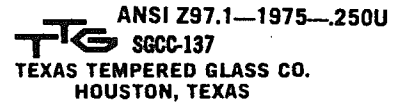
TEMP-SAFE, INC.
3000 South Kelly
Edmond, Oklahoma 73034

TEMP-SAFE
TEMPERED
SAFETY GLASS
ANSI Z97.1-1975
SGCC-440-3/16 U

TAYLOR PRODUCTS, INC.
Laura Avenue
Payne, Ohio 45880



TEXAS TEMPERED GLASS COMPANY
1331 West Belt Drive
Houston, Texas 77043



TUF-FLEX GLASS, INC.
811 Madison Avenue
Toledo, Ohio 43695

TEMPERED GLASS CORPORATION
6900 Adamo Drive
Tampa, Florida 33619

TEMPERED
GLASS CORP.
SGCC-337 .250U
ANSI Z97.1 1975

Tuf-flex Glass Inc.
TEMPERED SAFETY GLASS
1/4"-U ANSI Z97.1-1975
SGCC 229

TEMPGLASS, INC.
Willis Day Industrial Park
291 "M" Street
Perrysburg, Ohio 43551

TEMPGLASS®
ANSI Z97.1-1975
SGCC 592 3/16"-U

TYRE BROTHERS GLASS COMPANY
3008 South San Pedro Street
Los Angeles, California 90051



EXAMPLE OF PARTICIPANT'S TYPICAL LABEL

VIDRIERIAS DE LLODIO, S. A.
c/o Seaply Glass Company
271 North Avenue
New Rochelle, New York 10802



3/16" U SGCC-38
tempered glass
ANSI Z 97.1-1.975

VIDRIOS SECURIT S. A.
A.A. 437
Barranquilla, Colombia

Tentative label

SECURIT



TEMPERED SGCC-574
1/8 U ANSI Z97.1-1975

VIRACON, INC.
800 Park Drive
Owatonna, Minnesota 55060

VIRACON
TEMPERED GLASS
ANSI Z97.1-1975
SGCC-228 250-U

VIRGINIA GLASS PRODUCTS CORPORATION
P. O. Box 5431
Martinsville, Virginia 24112



VISADOR COMPANY
940 Visador Road
Jasper, Texas 75951

Safe-T-Leaded
ANSI Z97.1 - 1975
SGCC 510 3/16 L
VisADOR

SGCC PARTICIPANTS WITHOUT A CERTIFIED PRODUCT

Dr. George L. Graf, Jr.
E. I. du Pont de Nemours and Company
Plastic Products and Resins Department
Chestnut Run
Wilmington, Delaware 19898

Dr. Martin I. Cohen
Standard Packaging Corporation
National Metallizing Division
Cranbury, New Jersey 08512

Mr. Caryl E. Twitchell
Building 230 - BC8
3M Center
3M Company
St. Paul, Minnesota 55101

Mr. Henry S. Byrne
Mobay Chemical Company
Penn Lincoln Parkway West
Pittsburgh, Pennsylvania 15205

* * * * *

PROCEDURAL GUIDE
SAFETY GLAZING CERTIFICATION COUNCIL
CERTIFICATION PROGRAM FOR
SAFETY GLAZING MATERIALS USED IN BUILDINGS

FORWARD

Acceptance of a certified product containing safety glazing materials comes with the conviction that such certification assures a high level of safety and quality and that the integrity of the identifying mark or certification label is being reliably maintained by a competent certifying agency.

The provisions of American National Standard Z97.1 provide a sound technical basis for the required high level of safety. With the addition of independent administration plus periodic routine sampling and product evaluation, a program of product certification is developed in accordance with the accepted American National Standards as contained in American National Standard Z34.1. The Certification Program described here is predicated upon the concept of independent and impartial administration of the certification procedures which are incorporated in the SGCC license agreement.

To insure administration of the Certification Program in a uniform and equitable manner, this Procedural Guide has been prepared for the information and guidance of the participants.

It should be noted that the *SGCC License Agreement* is the governing document for operation of the Certification Program. This Procedural Guide, which is *not* an extension of that document, serves merely to describe the administrative procedure and routine operation of the Certification Program.

GENERAL INFORMATION

The Certification Concept

The SGCC Certification Program is based on the conviction that no standard of safety or quality is good without the *continuous adherence of the participants* to that standard.

To buyers, specifiers, code officials and users, the SGCC certification label offers the manufacturer's *assurance* that his safety glazing material has been *produced in conformance* to American National Standard Z97.1 covering safety glazing materials used in buildings.

Many state laws, municipal ordinances and building codes require that all glazing installed in certain pre-defined *hazardous* locations comply with the ANSI standard. This standard, promulgated by the American National Standards Institute, *requires* certification in accordance with ANSI Z34.1 prior to labeling safety glazing materials as conforming to ANSI Z97.1.

Who Can Participate?

Every manufacturer of safety glazing materials is eligible, *on a voluntary basis*, to participate.

Who Conducts the Program?

The Safety Glazing Certification Council, a non-profit corporation, is the sponsor of this certification program. SGCC supervises the certification program under which the Administrator periodically checks and reports compliance of the manufacturers of products having the SGCC certification label with the requirements of ANSI Z97.1.

Administration

Certification Services Corporation (CSC), is the independent *Administrator* of the Certification Program. CSC maintains the SGCC Office of Certification and handles the routine day to day business. All transactions are done in the name of SGCC.

How Can You Become a Participant?

The following must be accomplished before SGCC can certify an item of safety glazing material:

a] The manufacturer signs two copies of the SGCC License Agreement (including notarization of the Affidavit, Appendix A) and sends these to SGCC. SGCC will countersign both copies and return one to the manufacturer.

b] The manufacturer sends to SGCC one copy of a valid test report from an official SGCC-recognized prototype testing laboratory indicating full and complete compliance with the Specifications, namely ANSI Z97.1. (This is the "initial" or "prototype" testing and the sample is furnished by the manufacturer directly to any one of the SGCC-recognized independent commercial prototype testing laboratories, which the manufacturer selects.)

c] The manufacturer sends to SGCC the six-month certification fee *for each item which is to be certified.*

After receipt of *all* of the above items, SGCC sends to the participant a Notice of Product Certification which includes a SGCC Certification Number. This number *must* be incorporated into the permanent label to be affixed on each piece of certified safety glazing material. The certified item will then be listed in the next published Certified Products Directory.

HOW THE CERTIFICATION PROGRAM WORKS

The *American National Standards Institute* sets safety standards and safety glazing materials *must meet or exceed* applicable ANSI standards before they can be certified by SGCC. Specifications for safety glazing materials used in buildings are developed and reviewed at least every five years by ANSI.

SGCC-Recognized Independent Prototype Testing Laboratories conduct all tests. All laboratories, whose test reports are utilized by this Certification Program, shall be approved by the SGCC Certification Committee. Initial or prototype tests are performed at the testing laboratory selected by the participant. Routine evaluation samples are tested by the testing laboratory selected by the Administrator.

Administrator Authorizes Certification

As sole judge of compliance with applicable standards, the Administrator authorizes a product which has been approved to be listed in the Certified Products Directory.

Participants Label Safety Glazing Material within the limits of the product size tested. If 34 by 76 inches is the initial or prototype test size, then certification is extended to all sizes and the label contains a letter U, designating such unlimited size. The letter L, contained within the label, denotes that certification is limited to the width and length of the initial or prototype test size.

Approved products are listed in the Certified Products Directory, which is published at least every six months. It is sent to door, sash and building products manufacturers, glazing contractors, home builders, architects, regulatory agencies and code-making groups, etc. Directory listings contain the participants name, plant location, product description and a copy of the actual label that is *permanently* marked upon each piece of certified safety glazing material.

The *Administrator Samples Certified Glazing Material* from the participant's inventory once every six months.

An *Approved Testing Laboratory Determines Compliance* of these samples with the Specifications. Tests are made either at the place of manufacture or at the laboratory selected by the Administrator from the approved list. Results of each test are mailed promptly to the participant by the Administrator.

COMPLIANCE SAFEGUARDS

How is Compliance Assured?

Any certified product found in the course of routine sampling and evaluation not to be in compliance with the Specifications, is subject to having certification removed. The participant is given a 30-day grace period in which to demonstrate to the satisfaction of the Administrator that his product is in compliance. If he does not, certification is *automatically terminated* at the end of the 30-day period.

Challenging a Certified Product.

Complaints of non-compliance from any source will be investigated promptly by SGCC upon receipt of the complaint in writing along with an appropriate surety deposit. A minimum surety deposit of \$1,000 will be required for each complaint of non-compliance. The surety deposit will be assessed at the rate of \$250 per man day *plus* the reasonable costs of travel and the maintenance entailed in resolving such incidents. Refunds of part or all of the surety deposit will be made when applicable. All costs involved will be paid from the complainant's surety deposit, *unless* the investigation proves non-compliance, *in which case all costs will be borne by the participant found to be in non-compliance.*

Withdrawal of Certified Product

Any product which has been certified may be voluntarily withdrawn from the Certification Program by the participant at any time.

COSTS

What Does The Program Cost?

The participant pays all projected fees to SGCC on a six-month basis, in advance. A participant is invoiced for each item that is certified and listed separately in the Certified Products Directory. The invoice will include the fees for future routine evaluation testing.

Initial certification for each item will be for a period of six months. However, the next invoice to a participant will have the fees prorated to the nearest whole month in such a manner that participation in the Certification Program will be on a January 1 to July 1 and July 1 to January 1 basis.

\$385 administrative fee plus \$30 contingency fund fee per six months plus necessary laboratory fees for the first item at a plant.

\$45 administrative fee plus \$15 contingency fund fee per six months plus necessary laboratory fees for each subsequent product at the same plant.

CERTIFICATION PROGRAM DOCUMENTS AND AGREEMENTS

Licensee Agreement

This agreement, incorporating independent program administration and routine, periodic, independent sampling and evaluation, governs the relationship between SGCC and the participant.

Future Amendments or Revisions to the License Agreement will be recommended by the SGCC Certification Committee and enacted by the SGCC Board of Directors.

Effective Date, Duration and Termination

The License Agreement becomes effective on the date of its execution; has an initial duration of six months (adjustable to a January 1 to July 1 or a July 1 to January 1 basis), and is automatically renewed for successive, additional periods of six months, unless either party gives notice at least sixty days prior to date of expiration that cancellation is requested or unless revoked by SGCC for causes set forth in the document.

Upon proper execution and acceptance by SGCC the *Preissued Certification Number Bond* informs a participant of the exact mark of an item to be certified in the future. Thus he can purchase the proper marking equipment before the item is actually certified. If the participant marks this number upon production prior to actual certification the bond is forfeited to SGCC.

Upon proper execution and acceptance by SGCC the *Test Release Bond* permits the continuation of certification of an item even though the production facilities are shut down. If the participant does not notify SGCC within one week of the resumption of production the bond is forfeited to SGCC.

Administrative Service Agreement.

This agreement, entered into by SGCC and Certification Services Corporation, governs the relationship between SGCC and CSC, the independent Administrator. In general, it provides that the Administrator:

- a) samples certified products routinely
- b) has the right to witness any and all testing
- c) reviews all test reports in order to determine compliance of the certified product with the Specifications
- d) inspects and approves all in-plant and Test Laboratory test facilities for use in this Certification Program (Test Laboratories are "recognized" or approved by the SGCC Certification Committee)
- e) publishes and mails the SGCC Certified Products Directory on or about each January 1 and July 1

- f) handles all routine clerical duties of SGCC with respect to certification matters
- g) acts as SGCC treasurer, invoicing participants, maintaining a bank account and dispersing funds (fiscal reports are made to the SGCC Certification Committee)
- h) furnishes all testing except for prototype tests
- i) attends all scheduled meetings of the SGCC Certification Committee and
- j) in all of its actions acts in the name of SGCC.

Procedural Guide

This guide outlines program procedures in accordance with the provisions of the License Agreement and the Administration Service Agreement, for the guidance of those concerned with the procedural details of the Certification Program's operation. It covers the steps to be taken in any given procedural situation in the interest of equitable and uniform treatment of participants and the preservation of the integrity of the Certification Program.

Certified Products Directory

This directory is the one document and publication that is normally in the public's eye and contains a listing of the certified safety glazing materials of each participant.

Certification Label

This Certification Mark is permanently affixed to each piece of certified safety glazing material by the participant. It contains a code that refers to the listing in the Certified Products Directory. The listing then provides a complete product description including the company name, plant location, etc.

PROGRAM RESPONSIBILITY

The *SGCC Board of Directors* has overall responsibility for the well being and acceptance of the Certification Program by the industry, building officials and the public. It also bears legal corporate responsibility.

The *SGCC Certification Committee* has the responsibility for the general procedure and policy pertaining to operation of the Certification Program. As a part thereof, it:

- a] establishes certification "guidelines"
- b] determines the applicability of the Specifications in a specific situation where a question is raised by a participant or the Administrator
- c] approves Test Laboratories
- d] determines which of the Specifications are to be designated effective for the purposes of product certification and the date or dates on which they become effective
- e] recommends to the SGCC Board of Directors changes to be made in the License Agreement.

COMMUNICATIONS

In all matters concerning the administration and implementation of the SGCC certification program, correspondence may be directed to any of the following:

SGCC Board of Directors
Mr. Richard L. Morrison, Chairman
Ford Motor Company
Glass Division; Ninth Floor
Parklane Towers East
One Parklane Boulevard
Dearborn, Michigan 48126
Telephone 313-322-1385

SGCC Certification Committee
Mr. Gene Gilbert, Chairman
Ohio Plate Glass Company
P. O. Box 671
Lewisburg, Ohio 45338
Telephone 513-962-2696

SGCC
Mr. Robert A. Nance, P. E.
Administrative Manager
1640 West 32 Place
Hialeah, Florida 33012
Telephone 305-558-1352

SGCC
Ms. Nancy W. Johnson
Administrative Assistant
1640 West 32 Place
Hialeah, Florida 33012
Telephone 305-558-1352

* * * * *

SGCC APPROVED TESTING LABORATORIES

Approved Engineering Test Laboratories
1536 East Valencia Drive
Fullerton, California 92631
Attention: Mr. Richard Short
Telephone (714) 879-6110

Miami Testing Laboratory, Inc.
1640 West 32 Place
Hialeah, Florida 33012
Attention: Mr. James W. Bailey
Telephone (305) 822-1141

Bowser-Morner Testing Laboratories, Inc.
420 Davis Avenue; Box 51
Dayton, Ohio 45401
Attention: Mr. Jack Delaney
Telephone (513) 253-8805

Patzig Testing Laboratories, Inc.
3922 Delaware Avenue
Des Moines, Iowa 50313
Attention: Mr. Byron A. Marks
Telephone (515) 266-5101

Electrical Testing Laboratories, Inc.
2 East End Avenue
New York, New York 10021
Attention: Mr. Claude Robb
Telephone (212) 288-2600

Southwestern Laboratories
2900 Cullen Street
Fort Worth, Texas 76101
Attention: Mr. Wayne Tessener
Telephone (817) 332-5181

Electrical Testing Laboratories, Inc.
1960 Will Ross Court
Chamblee, Georgia 30341
Attention: Mr. Harry Fry
Telephone (404) 458-7763

Twin City Testing and
Engineering Laboratory, Inc.
662 Cromwell Avenue
St. Paul, Minnesota 55114
Attention: Mr. Ward Blandin
Telephone (612) 645-3601

* * * *

CERTIFICATION GUIDELINES AND INTERPRETATIONS

For guidance in certifying safety glazing materials the SGCC Certification Committee has adopted the following:

GENERAL

G.1

Participation in the certification program will be on a January 1 to July 1 and July 1 to January 1 basis. Charges will be prorated to the nearest whole month based on the date of approval of certification.

G.2

Tests for initial compliance of safety glazing materials to ANSI Z97.1-1975 will be accepted from any testing laboratory approved by the SGCC certification committee.

G.3

Paragraph (1) Section 4.1.3 of ANSI Z97.1-1975 is intended to apply to laminated, wired and organic coated glass only. Paragraph (2) is intended to apply to tempered glass only. Paragraph (3) is intended to apply to plastics only. Paragraph (4) is intended to apply to any safety glazing material.

G.4

For insulating glass units to be considered safety glazing material, each lite in the construction must be of safety glazing material.

G.5

The SGCC item number when used as part of a permanent label designates the name of the licensee (participant) and also the location of the manufacturing plant since the Certified Products Directory which lists the item number and pertinent data is published twice a year.

G.6

a) All test specimens except for prototype samples, must be marked with the correct SGCC permanent label prior to testing in order to be considered a valid sample. The administrator shall construe the absence of a correct permanent label as a failure to comply with the Specifications. In such cases of noncompliance, Sections a, c, and e of G.11 shall be followed.

b) The laboratory shall verify that the label has the correct SGCC number, designation of the ANSI standard, nominal thickness, and certified size designation (U or L).

c) The testing laboratory is to advise the administrator of any specimen that does not in fact bear the correct SGCC permanent label and will be instructed by the administrator not to test but hold the sample.

d) The administrator will inform the participant of the situation and direct (by letter) the testing laboratory to commence testing no later than 30 days hence. Until that time the testing laboratory is instructed to make these specimens available to the participant at their convenience (the specimens are to remain at the testing laboratory) in order that the participant may point out or show them that in fact the SGCC permanent label is correct or agree that in fact the correct SGCC permanent label is not present. (In cases of any dispute between the participant and the testing laboratory the decision of the administrator shall be final). The participant shall not mark specimens after receipt at the testing laboratory.

G.7

Safety glazing materials for which certification is requested for indoor use only shall be subjected to the provisions of section 4.1 (impact tests) and 4.5 (aging tests) of ANSI Z97.1-1975 irrespective of the composition or construction of the glazing material. Like products and materials produced in the same manner as samples submitted for test shall be legibly and permanently marked in one corner with the words "Indoor Use Only" and the SGCC identification number.

G.8

After initial compliance with a sample size as stated in Table 1, testing of other sizes which represent the sizes manufactured may be allowed, provided however that all sizes produced up to the size provided by Table 1, ANSI Z97.1-1975 are exposed to selection for testing.

G.9

Specimen sizes up to 34 inches by 77 inches shall be valid samples when independently obtained by the administrator for purposes of routine evaluation.

G.10

In cases where the administrator samples and identifies specimens for routine evaluation on the participant's premises or requests participant's samples when none are available at the time of sampling:

a) The participant be permitted 6 weeks in which to effect delivery of said specimens to the administrator's designated testing laboratory.

b) Failure to act as specified above shall be construed by the administrator as failure of the said specimens to comply with the Specifications and the administrator shall act as provided for in License Agreement A.6.

G.11

In cases where a routine evaluation sample fails to comply with the Specifications:

a) Written notice shall be sent to the participant by the administrator that within 30 days the participant must submit a retest sample to the testing laboratory designated by the administrator.

Certification shall be removed if the sample is not received within the allotted 30 days or if the sample submitted fails to comply with the Specifications.

b) Within 3 months the administrator shall obtain an additional random sample for evaluation (in addition to the routine evaluation sample obtained twice a year.) The administrator shall be certain that this additional sample is of recent production.

c) At the option of the administrator, specimens submitted under (a) above shall be either prototype size and pattern or identical to those previously sampled and of recent production.

d) Certification shall be removed if the additional random sample obtained in (b) above fails to comply with the Specifications.

e) All costs related to G.11 are to be borne by the participant.

G.12

If a participant who manufactures a certified product outside the 48 contiguous States feels that in a particular instance that he will be unable to act as provided for in paragraph b) of SGCC Guideline G.11, he should notify the administrator. The administrator will then contact the Chairman of the Certification Committee for a decision as to what action is to be taken.

G.13

In cases where a certified item is produced infrequently or in small quantities so as to make it difficult for the administrator to obtain routine evaluation samples, the participant shall notify the administrator at least two weeks in advance of any production of such item.

G.14

The administrator shall remove certification from all of any participants products for failure to pay any monies due to SGCC within 30 days of invoice date. (Reference License Agreement A.2, A.12 and B.6).

G.15

In the situation where a participant desires to recertify a product that previously had certification removed because of failure to comply with the Specifications (label and thickness tolerances excepted), the product shall be routinely sampled four times during the first year. The costs involved shall be paid by the participant.

G.16

The nominal thickness designations in SGCC authorized permanent labels for safety glazing materials may be shown in metric units. The thickness will be expressed in millimeters, limited to two decimal places, and will have the suffix "mm".

G.17

All safety glazing materials that are not symmetrical from surface to surface, shall be impacted two specimens on one side and two specimens on the other side.

G.18

Certified and permanently labeled safety glazing materials such as laminated glass, wired glass, rigid plastic or organic coated glass may be

cut into smaller pieces by a distributor or installer after manufacture and it is not practical for each such smaller piece to bear a manufacturers' permanent label when finally installed in a building. When this is the case, then the distributor or installer shall apply a permanent label to each piece, which states his name and certifies that he cut the piece from material that was properly labeled in accordance with the requirements of SGCC.

For the purpose of this guideline, a permanent label is defined as one that will remain permanently legible and would be destroyed in attempts to remove it from the product.

G.19

The semi-annual invoicing date for certification fees shall be April 1 and October 1 of each year and the administrator is instructed to take those steps necessary to remove certification from participants for failure of payment prior to closing date of the certified products directory.

G.20

For certification purposes a panel of glazing material composed of multiple components (such as leaded glass) may be tested and interpreted as a unit.

G.21

A preissued SGCC certification number shall be issued by the administrator upon receipt of a properly executed license agreement and a properly executed bond form in the amount of \$10,000. The condition of the bond is such that if the participant does not label any safety glazing material with the preissued certification number prior to formal certification then the bond shall be void.

G.22

In the case of wired glass, plastics and organic coated glass certification of patterned product may be extended to cover other patterns provided:

- a) The nominal thickness of the proposed alternate and all aspects other than pattern are the same as the certified product.
- b) The administrator of the certification program is provided with a copy of a prototype test from an approved laboratory, showing satisfactory compliance with the impact requirements of ANSI Z97.1-1975 for each alternate pattern proposed.
- c) The certification committee is provided with a 6 by 6 inch sample of each proposed alternate for its record and file. This must be sent to the administrator of the certification program.

After admission under blanket certification covering patterned products, any such patterns available may be selected by the administrator for routine sampling and testing.

In the case where a routine evaluation sample covered under a blanket certification fails to comply with the specifications, the situation requires that that particular product be submitted for the retest sample required by Guideline G.11a and also that that particular product be sampled by the administrator for the additional sample required by Guideline G.11b.

G.23

There may be instances when a production facility is temporarily inoperative. This could be caused by, but not limited to, equipment repair or replacement, labor difficulties, energy or material shortages or economic considerations. As a consequence, samples for routine testing may not be available for long periods. The participant may desire to retain certification during the shutdown period. This shall be done as follows:

- a) Prior to or within 2 weeks, after the shutdown the participant shall inform the SGCC administrator by registered mail.
- b) The SGCC administrator will immediately supply the participant with test release bond forms for submission by the participant.
- c) Within 2 weeks after receipt of the bond forms, the participant shall submit them to the SGCC administrator. A separate bond shall be submitted for each certified product affected.
- d) During the period covered by the bond the participant shall retain certification, contingent upon payment of normal certification fees and meeting all other participant obligations. Bonds will terminate 90 days

after application but may be renewed by the participant any number of times. Renewal is an obligation of the participant and requires all steps listed herein.

e) Within one week after re-activation of the production facility the participant shall 1) notify the SGCC administrator by registered mail and 2) submit samples from the first weeks production to an SGCC approved laboratory for testing. In cases where more than one certified product is produced with the same equipment samples of each must be furnished for testing within the first month. These will be considered as the routine samples for retesting for the six months period during which they are submitted.

f) Failure by the participant to comply with any of the preceding shall be the basis for removal of certification from the affected products.

G.24

When a participant's production equipment will not produce a size of 34 by 76 inches and the participant wished to certify a) a size whose smaller dimension exceeds 34 inches, material shall be tested whose smaller dimension is 34 inches or b) a size whose larger dimension exceeds 76 inches, material shall be tested whose larger dimension is 76 inches.

G.25

When a participant specifically and voluntarily desires to use an SGCC permanent label on their product that denotes compliance with ANSI Z97.1-1966, ANSI Z97.1-1972 and ANSI Z97.1-1975 or combination thereof, that they notify the SGCC in writing of the certified item that they desire to so mark. The SGCC will at the request of the participant conduct compliance tests to ANSI Z97.1-1966, ANSI Z97.1-1972 and ANSI Z97.1-1975 or combination thereof. A single set of four test specimens will be impacted to determine impact test requirements of all standards. Upon successful completion of compliance tests the safety glazing materials are permanently labeled and listed in the SGCC certified products directory as having met the requirements of 1966, 1972 and 1975 versions or combination thereof of the ANSI Z97.1 standard. Any costs involved shall be paid by the participant.

G.26

Any label that can be removed intact shall not be considered permanent and is not acceptable to SGCC.

G.27

When the ownership of a manufacturing plant changes, SGCC will require a new license agreement, new prototype test reports and issue new SGCC numbers for those products that the new owner may wish to certify (See 10.1.75.2). For all plastics requiring weathering tests, an infrared spectrogram shall be obtained. This spectrogram shall be compared with preceding owners material. If this spectrogram shows no difference in the material and the owner certifies that no change in composition or process is being made, then the requirements of weathering test for the new product shall be waived.

G.28

The administrator shall construe noncompliance with thickness tolerances as a failure to comply with the Specifications. In such cases of non-compliance, Sections a, c, and e of G.11 shall be followed.

TEMPERED TRANSPARENT GLASS

T.1

Certification of either flat glass or patterned glass will not cover the other except as noted in guideline T.2. (Flat glass designates ground and polished plate, float and sheet glass.)

T.2

Polished plate glass and the rough plate glass blank from which it is produced will be considered to be of equal nominal thickness. Certification of tempered flat glass will therefore be interpreted as including tempered rough plate blank.

T.3

Certification of regular tempered glass will also cover tinted, heat absorbing and coated glasses of the same nominal thickness. Glasses of the same nominal thickness with a ceramic material applied as a continuous or partial coating to one or more surfaces prior to tempering are also covered.

T.4

In cases where certified tempered glass is normally not available for

sampling the participant may make an overrun (of four lights of prototype size that are to be marked with the date of production) when the item is in normal production and these will be accepted by the administrator if other samples are not available. Otherwise, when production samples are not available the administrator shall notify the participant to submit prototype size samples to the administrator within six weeks.

T.5

Certification of any nominal thickness of tempered safety plate, float or sheet glass will also cover the other two types. ANSI Z97.1 does not require the permanent label on tempered safety glass to specify which type of glass is used nor is it required that the test specimens be identified in this regard.

Since the minimum allowable thickness in Federal Specifications DD-G-451c is different for plate/float and sheet glass of equal nominal thickness, SGCC may not in all cases be able to certify the glass tested meets this specification. When this situation arises, the participant upon the request of SGCC must furnish a statement indicating all plate/float and sheet of his manufacture meet the thickness requirements of Federal Specification DD-G-451c.

T.6

For certification purposes the nominal thickness of 32 ounce tempered transparent glass shall be 4 mm and thickness tolerance shall be 3.8 mm (0.150 inches) minimum and 4.2 mm (0.165 inches) maximum.

T.7

Prototype test shall be conducted on bent specimens sampled from normal production run. The specimen size shall have a surface area of at least 50 percent of the maximum size for which certification is desired. Routine tests may be performed on bent specimens or flat specimens fabricated using the same tempering furnace. The test apparatus shall be modified to clamp the vertical straight edges and to support the concave side of the curved edges. Impact shall be on the convex surface.

TEMPERED PATTERN GLASS

TP.1

For purposes of certification, the nominal thicknesses of patterned, figured, or rough rolled glass are the common fractions found in DD-G-451c which describes the maximum thickness. The permanent label must contain this fraction or a metric or decimal dimension within the tolerance of this thickness as published in DD-G-451c.

The patterns in each thickness will be classified as to the ratio of minimum to maximum thickness as follows:

<i>Pattern depth class</i>	<i>Ratio</i>
Shallow pattern glass	0.90 or above
Medium pattern glass	0.80 to 0.89
Deep pattern glass	0.79 or below

Certification will be by nominal thickness and pattern depth class. Any pattern in a certified thickness and pattern depth class is certified.

New or unlisted patterns must be submitted to the pattern subcommittee for classification and file, prior to certification. After measurement, the new pattern will be assigned to a pattern depth class. If the participant has a certified product in that thickness and class, the new pattern may, at the request of the participant, be included under the same SGCC certification number. In the case of 5/32 inch tempered pattern glass refer to DD-G-1403b because this thickness is not included in DD-G-451c.

TP.2

The maximum thickness shall be recorded when measuring the thickness of pattern glass.

TP.3

For tempered pattern glass, one specimen must be weighed and the weight of ten square inches determined from the weight, width and height of that specimen to use for ANSI Z97.1-1975 test purposes.

LAMINATED GLASS

L.1

Certification of regular laminated glass will also cover tinted, heat absorbing and coated glasses, both flat and bent of the same nominal thickness.

L.2

In cases where certified laminated glass is normally not available for sampling the participant may make an overrun (of four lights of

prototype size that are to be marked with the date of production) when the item is in normal production and these will be accepted by the administrator if other samples are not available. Otherwise, when production samples are not available the administrator shall notify the participant to submit prototype size samples to the administrator within six weeks.

L.3

Certification of 7/32 inch laminated glass also covers SS/DS and vice versa.

L.4

When a laminated glass is certified, other laminated glasses having the same thickness or thicknesses of glass and a greater thickness of plastic interlayer will be considered to be of equal nominal thickness and to be included in the certification.

L.5

Laminated safety glass need not be identified by type of base glass.

L.6

Thickness of the plastic interlayer shall be measured by the SGCC standard method.

L.7

For certification purposes the following thickness tolerances shall be used: Thickness tolerance shall apply only to the overall nominal thickness. The plus tolerance shall be the sum of all of the individual plus tolerances of each layer of the laminate. The minus tolerance shall be the sum of all of the individual minus tolerances of each layer of the laminate.

WIRED GLASS

W.1

Certification of one polished wired glass may be applied to other polished wired glasses provided:

- The glass thickness of the candidate glass is nominally equal to the thickness of the glass that is certified.
- The wire diameter of the candidate glass is at least as great as the wire diameter in the glass that is certified.
- The spacing of the wires in the candidate glass is no greater than the spacing of the wires in the glass that is certified.
- The certification committee has been presented with a copy of the results of a test indicating that compliance of the candidate glass with the requirements of ANSI Z97.1-1975 impact testing has been made.

After admission under the blanket certification covering wired glasses, all wired glasses so certified must be exposed to random sampling at each examination although only one will probably be selected for testing.

PLASTICS – GENERAL

P.1

Certification of one tint or color of rigid plastic will also cover other tints, colors, flat configurations or bent and formed configurations.

P.2

For certifying all plastics covering a range of thicknesses, prototype impact tests are required of the minimum thickness and also of the maximum thickness (except that 0.250 inch thickness would be tested if the maximum thickness exceeds 0.250 inches). Only one certification number will be issued and shall be marked upon all thicknesses. Routine re-evaluation samples are to be selected by the administrator from any of the certified thicknesses.

P.3

The following thickness tolerances shall be used for certification purposes:

Outdoor use plastic materials Class 1. Cast acrylic. (Including continuously cast sheet): As specified in Federal Specification LP-391, latest issue.

Outdoor use plastic materials Class 2. Extruded acrylic: As specified in Federal Specification LP-507, latest issue.

Outdoor use plastic materials Class 3. As specified in Federal Specification P-46144, latest issue.

Indoor use plastic materials Class 1: Plus or minus 10 percent of nominal thickness.

P.4

The maximum thickness shall be recorded when measuring the thickness of patterned plastics.

P.5

Certification of either smooth plastic or patterned plastic will not cover the other.

PLASTICS — EXTERIOR USE

PE.1

Sheet plastics for exterior use must comply with paragraph 4.3 of the ANSI Z97.1-1975. (UV Weathering).

PE.2

Certification of plastics for exterior use shall be permitted prior to completion of ANSI Z97.1-1975. Weathering Tests (paragraph 4.3) provided that a considered expert opinion states that the infrared spectrogram indicates that the plastic is an acrylic or UV inhibited polycarbonate of proven weatherability. Certification shall be removed if compliance with the weathering test is not demonstrated within six months of the certification date.

PE.3

For all plastics requiring UV weathering tests an infrared spectrogram shall be obtained of all prototype weathering specimens. An infrared spectrogram shall be obtained of all routine re-evaluation samples and shall be compared with that of the prototype in lieu of conducting weathering tests. The spectral scan shall be made using a minimum film thickness of 0.002 inches or its equivalent.

PE.4

When initial Charpy unnotched specimens do not break, then notched specimens shall be used for both initial and exposed Charpy impact testing. The specimens shall be notched prior to UV exposure and the notched surface shall be exposed to the UV.

PLASTICS — INDOOR USE ONLY

PI.1

Sheet plastics used in indoor applications only, do not have to comply with paragraph 4.3 of ANSI Z97.1-1975 (UV Weathering) but must comply with paragraph 4.5.

PI.2

The permanent label authorized by SGCC must include "Indoor Use Only".

PI.3

For all indoor plastics requiring ageing tests, an infrared spectrogram shall be obtained of all prototype ageing specimens. An infrared spectrogram shall be obtained of all routine re-evaluation samples and shall be compared with that of the prototype in lieu of conducting ageing tests. The spectral scan shall be made using a minimum film thickness of 0.002 inches or its equivalent.

LEADED PATTERNED ANNEALED GLASS

LG.1

Certification of one leaded patterned glass (annealed) may be extended to cover other patterns (on the glass surface) provided:

a) The nominal thickness of the proposed alternate and all aspects other than pattern are the same as the certified product.

b) The administrator of the certification program is provided with a copy of a prototype test from an approved laboratory, showing satisfactory compliance with the impact requirements of ANSI Z97.1-1975 for each alternate pattern proposed.

c) The certification committee is provided with a 6 by 6 inch sample of each proposed alternate for its record and file. This must be sent to the administrator of the certification program.

d) After admission under blanket certification covering leaded patterned annealed glass, any such patterns available may be selected by the administrator for routine testing.

LG.2

Certification of one diamond shaped leaded patterned (annealed) glass may be extended to cover other sizes of diamonds provided:

a) All aspects of the product except diamond size is the same as the certified product.

b) The administrator of the certification program is provided with a copy of a prototype test from an approved laboratory, showing satisfactory compliance with the impact requirements of ANSI Z97.1 - 1975 for each alternate size diamond proposed.

c) The certification committee is provided with a 6 by 6 inch or a proper and representative sample of each proposed alternate for its record and file. This must be sent to the administrator of the certification program.

After admission under blanket certification, any such size diamond available may be selected by the administrator for routine testing.

LG.3

For leaded diamond patterned annealed glass the tolerance for diagonal came center dimensions shall be plus or minus 10 percent.

Prototype sample must have diagonal came center dimensions at the upper limit of the dimensional tolerance. Diamond size listed in the certified products directory shall be nominal dimensions.

Prototype diamond dimension equals 1.10 times nominal diamond dimension.

ORGANIC COATED GLASS

AG.1

Thickness of the applied plastic coating shall be measured by the SGCC standard method.

AG.2

The SGCC authorized permanent label, which complies with guideline G.26 must be imprinted upon or applied to a surface of the plastic for all plastic coated annealed glasses.

AG.3

Prototype test shall be conducted on bent specimens of the surface area at least 50 percent of the maximum size for which certification is desired. Routine tests may be conducted on flat or bent specimens. The test apparatus shall be modified to clamp the vertical straight edges and to support the concave side of the curved edges. Two specimens shall have organic coating on the concave side and two on the convex surface. Impact shall be on the convex surface.

* * * * *

* * * * *

**ANSI Z97.1-1975 Safety Performance Specifications and Methods of Test
for Safety Glazing Material Used in Buildings**

The purpose of Z97.1-1975 is to prescribe the functional properties of safety glazing materials so that they can be used in any place in buildings for which they possess the requisite characteristics. Intended to serve as a convenient reference for building officials, this new and important document is designed to provide a basis for standards that may be incorporated in federal, state, and local regulations.

**ANSI Z97.1-1975
may be
obtained at \$4.00
per copy from
the American National
Standards Institute**

**AMERICAN NATIONAL STANDARDS INSTITUTE
1430 BROADWAY
NEW YORK, NEW YORK 10018**



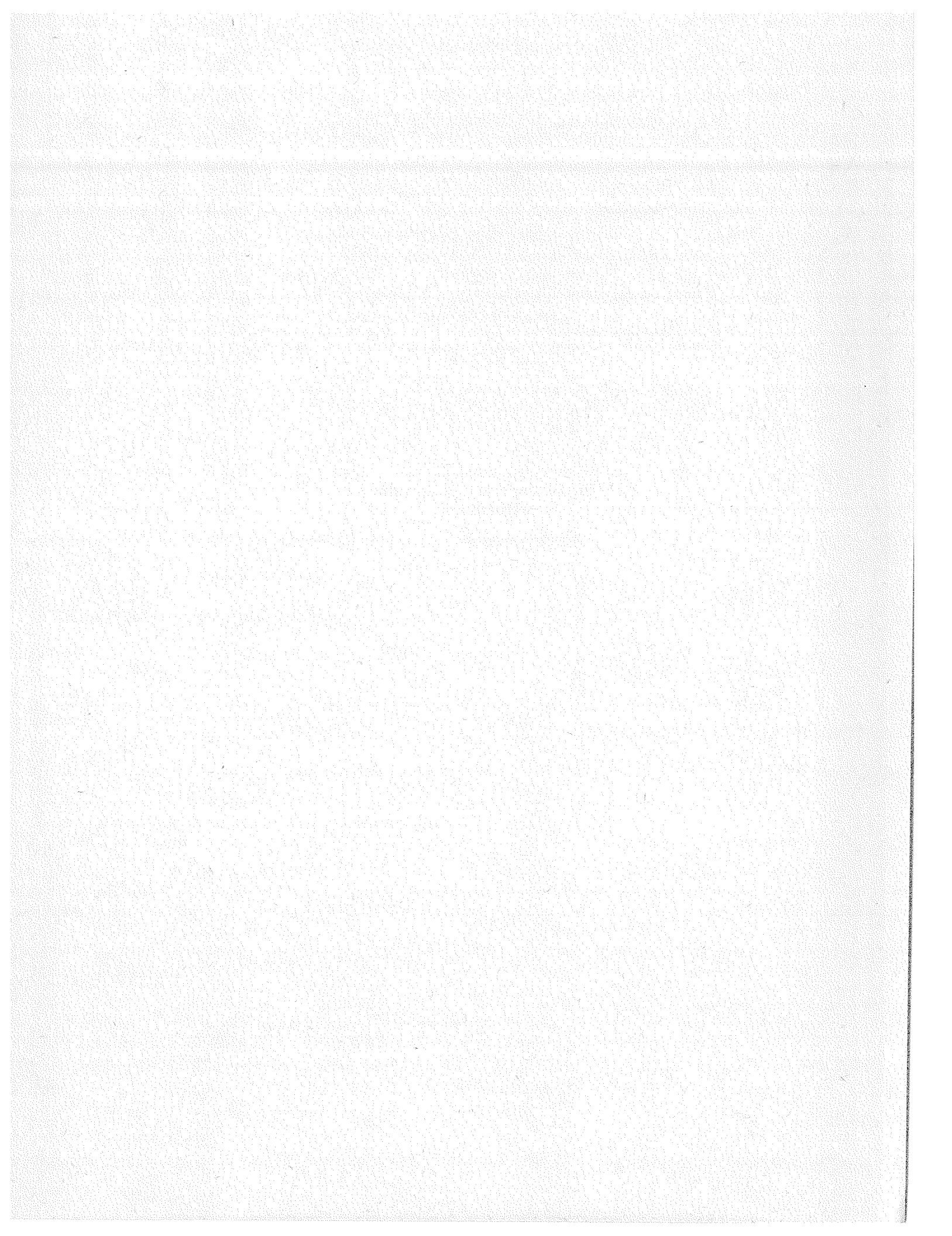
Enclosed is my payment of Please send ANSI Z97.1-1975.

Name _____

Organization _____ Title _____

Street _____

City _____ State _____ Zip _____



future editions of this certified products directory
will be sent to individuals making a request on their
corporate letterhead.



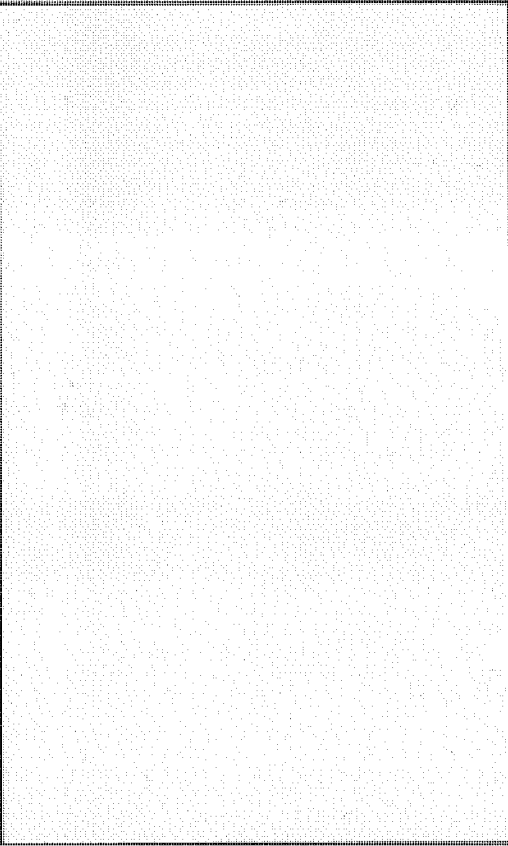
safety glazing certification council

1640 west 32 place
hialeah, florida 33012

BULK RATE
U.S. POSTAGE
PAID
HIALEAH, FLA.
Permit No. 69

THIRD CLASS MAIL

to



ADDRESS CORRECTION REQUESTED