

safety glazing certification council

JANUARY 1, 1988

certified products directory  
safety glazing material used in buildings



TABLE OF CONTENTS	PAGE
Minutes of Meeting of the Certification Committee . . . . .	4
Roster . . . . .	4
Program Concept . . . . .	8
Procedural Guide . . . . .	9
Certification Guidelines and Interpretations. . . . .	14
SGCC Label Requirements . . . . .	23
Classified Tempered Glass Patterns. . . . .	24
Certified Products (Numerical Sequence) . . . . .	25
Certified Products (Alphabetically By Plant). . . . .	28
Certified Products (By Product Type). . . . .	34
Licensees and Their Typical Labels. . . . .	43
ANSI Z97.1-1984 . . . . .	52
CPCS 16 CFR 1201. . . . .	52
SGCC Directory Order Blank. . . . .	53
SGCC Approved Laboratories. . . . .	Back Cover

**MEETINGS OF THE CERTIFICATION COMMITTEE**

The Certification Committee of the Safety Glazing Certification Council last met on October 24 and 25, 1987. Minutes of this meeting may be obtained by writing to the Administrative Manager of the Safety Glazing Certification Council (SGCC).

\* \* \* \* \*

Certification in this directory is current as of January 1, 1988; however, products may be certified or have certification removed from time to time. For the most current information please contact the Administrative Manager of SGCC.

Any questions, comments or requests for copies of this directory should be directed to the Administrative Manager of the Safety Glazing Certification Council:

\* \* \* \* \*

**ADMINISTRATION**

Administrator: ETL Testing Laboratories, Inc.  
Industrial Park - Route 11  
Cortland, NY 13045-0950  
Telephone 607-753-6711

Administrative Manager: Claude F. Robb

Administrative Staff: Carole K. Skinner

**ROSTER****SGCC BOARD OF DIRECTORS****REPRESENTING PUBLIC INTEREST**

Mr. Mario J. Cellarosi  
National Bureau of Standards  
Room H251; Material Building  
Washington, D.C. 20234  
Telephone: 301-975-6123

Dr. George L. Graf, Jr.  
2642 Longwood Drive  
Wilmington, DE 19810  
Telephone: 302-475-3723

Mrs. Jean Cornwell  
225 Swan Lake Road  
Stockbridge, GA 30281  
Telephone: 404-474-4278

Mrs. Sylvia Lav  
8515 Falmouth Avenue, Apt. No. 414  
Playa Del Rey, CA 90293  
Telephone: 213-305-8502

Dr. Joseph E. Minor, P.E.  
Glass Research & Testing Laboratory  
Texas Tech University  
P. O. Box 4089  
Lubbock, TX 79409  
Telephone: 806-742-3476

## REPRESENTING INDUSTRY

Mr. Robert L. Brown  
Virginia Glass Products Corporation  
P. O. Box 5431  
Martinsville, VA 24115  
Telephone: 703-956-3131

Mr. Gary W. Harris  
Safelite Glass Corp.  
801 South Wichita  
P. O. Box 1879  
Wichita, KS 67201  
Telephone: 316-267-4000

Mr. William C. Cooke  
AFG Industries Inc.  
P. O. Box 929  
Kingsport, TN 37662  
Telephone: 615-229-7302

Mr. Richard T. McGuire  
PPG Industries, Inc.  
Quality Assurance Dept.  
1000 RIDC Plaza  
P. O. Box 2811  
Pittsburgh, PA 15230  
Telephone: 412-782-6700

Mr. Henry A. Gorry  
Guardian Industries Corp.  
43043 W. Nine Mile Road  
Northville, MI 48167  
Telephone: 313-347-0100

Mr. Richard L. Morrison  
Ford Motor Company  
Glass Division  
300 Renaissance Center  
P. O. Box 43343  
Detroit, MI 48243  
Telephone: 313-446-4184

## Honorary Non-Voting Lifetime Member

Mr. Norman Nitschke  
Glasstech, Inc.  
Ampoint Industrial Park  
995 Fourth Street  
Perrysburg, OH 43551  
Telephone: 419-661-9500

## SGCC OFFICERS

President  
First Vice President  
Second Vice President  
Secretary  
Treasurer

Robert L. Brown  
William C. Cooke  
Mario Cellarosi  
Joseph E. Minor  
Sylvia Lav

## Legal Counsel

William M. Hannay, Esq.  
Schiff Hardin & Waite  
7200 Sears Tower  
Chicago, IL 60606  
Telephone: 312-876-1000

## Auditor

Dunstone, Kane, Bowles & Wicks  
209 Second Street  
Liverpool, NY 13088  
Telephone: 315-451-6167

## SGCC CERTIFICATION COMMITTEE

Henry A. Gorry, Chairman

Gene Gilbert, Vice-Chairman

Licensee	Primary Member	First Alternate	Second Alternate
ACI Glass Products, Inc.			
AFG Glass, Inc.	Brian J. Burnet		
AFG Industries Inc.	William C. Cooke	Billie G. Nichols	Thomas C. Carson
Air Seal Insulating Glass Units			
Alumiglass, Inc.			
American Flat Glass Distributors		Douglas A. Long	Freddie Michael
Anglass Industries, Inc.			
Arch Tempered Glass Products			
Ardco, Inc.	Andrew G. Menke		
Binswanger/ACI Glass	Kenny Lyerla	Gordon Lillie	Bill Swanson
Bogardus Wilson Ltd.			
The Chamberlain Group, Inc.	Dick Howk	Bob Gentry	Ned Skoog
Colonial Mirror & Glass Corp.			
Downey Glass Company, Inc.	John R. Montcalm	Bernard Puttler	Serge E. Graur
Elgin Precision Glass Company, Inc.	Dan Cukierski	Rob Jaynes	
Empire Glass, Inc.			
Falconer Glass Industries, Inc.	Richard E. Turner, Sr.	Carl Carmen, Jr.	Richard Stout
Falconer-Lewistown, Inc.	Richard E. Turner, Jr.	Carl Carmen, Jr.	Richard Stout
Flex-O-Glass, Inc.	Harold G. Warp	Delbert Christensen	
Flex-Temp, Inc.			
Floral Glass & Mirror, Inc.	Charles Kaplanek		
Fulton Glass Industries, Inc.	Paul F. Tumey	David Farley	Howard Bienenfeld
Gemtron Corp.	Frank DeFord		
General Glass Corporation	Paul Toltz	Peter Fillmore	
Geneva Glass Industries			
Glass Factory, Inc., The			
Glass Tempering Service, Inc.	Virgil S. Taylor		
Glasstemp, Inc.	Steve Lacey		
Good News Glass	Wesley C. Garner		
GMC Industries, Inc.			
Guardian Fabrication, Inc.	Henry A. Gorry		
Guardian Industries Corp.	Henry A. Gorry	R. L. Alonzo	L. Morrison
Hamilton Glass Products, Inc.	Robert A. Moss	John J. Summers	J. Bruce Crockett
Hankuk Glass Industry, Ltd.			
Havlin Witkin Corporation			
Hehr Glass Company			
Hordis Brothers, Inc.	Richard E. Wright	Robert B. Williams	
Howe-Martz Glass Company			
Insulpane, Inc.			
Lin's Glass Company			
Nashville Tempered Glass Corp.			

## SGCC CERTIFICATION COMMITTEE

Licensee	Primary Member	First Alternate	Second Alternate
O & W Glass Industries, Inc.			
OPG Industries, Inc.	Gene Gilbert		
Perma*View Processed Glass			
PPG Industries, Inc.	Richard T. McGuire	Charles R. Sutermeister	John M. Schlueter
Safelite Glass Corp.	Gary Harris	Robert Avers	
Saint Gobain			
San Jacinto Glass Co.			
Shaw Glass Company, Inc.	Frederic P. Shaw		
Spectrum Glass Products			
Sumitec, Inc.	Steve Winger	Ronald Golba	
Sunbelt Glass Inc.			
Sunglas Products, Inc.	Mitchel D. Edwards	Omicka Burgess	
Swift Glass Company, Inc.			
Temp-Tech Industries, Inc.	Bart Semeraro		
Tempered Glass Corporation	Paul F. Tumey		Howard Bienenfeld
Tempered Glass, Inc.	D. A. Sampsel	D. P. Singleton	W. A. Stone
Tempered Glass International, Inc.			
Tempglass, Inc.	Irvin D. Fintel	J. Colapietro	Mark Roman
Tempglass Eastern, Inc.	John C. Mulvanerty		
Tempglass Southern, Inc.			
Texas Tempered Glass Company	Don T. Cope	James J. Garby	
TACO (Three Rivers Aluminum)	Robert P. Randall	John Kalakos	
Vidrierias de Llodio, S.A.	Henry A. Gorry	A. Subinas Landa	Jose F. Zabala
Viracon, Inc.	William Knutsen	Russ Huffer	Rick Voelker
Viracon/Insolair	Harold Landsman		
Virginia Glass Products Corporation	Robert L. Brown	Brooks R. Leavitt	A. P. Stillman

## Member by virtue of being a director:

National Bureau of Standards	Mario Cellarosi
Consumer	Mrs. Jean Cornwell
Consumer	George L. Graf, Jr.
Consumer	Mrs. Sylvia Lav
Texas Tech University	Joseph E. Minor
Glasstech, Inc.	Norman Nitschke

Members from those without  
certified products:

Exposition Technology, Inc.	Martin I. Cohen
-----------------------------	-----------------

### PROGRAM CONCEPT

The Safety Glazing Certification Council (SGCC) is a non-profit corporation, established in 1971 by manufacturers of safety glazing products, building code officials and others concerned with public safety.

SGCC maintains a program which provides for the certification of safety glazing materials found to be in compliance with one or both of the following specifications:

American National Standard for Safety Glazing Materials used in Buildings - Safety Performance Specifications and Methods of Test: ANSI Z97.1-1984

Consumer Product Safety Commission Safety Standard for Architectural Glazing Materials - codified at Title 16, Part 1201 of the Code of Federal Regulations: 16 CFR 1201

These specifications subject safety glazing materials, used in buildings and architectural products, to practical tests designed to reduce or eliminate unreasonable risk of death and injury when safety glazing material is broken by human contact.

The specification(s), to which a safety glazing material is certified by SGCC, is at the direction of the licensee.

SGCC responsibilities are threefold: to conduct an independent routine sampling and testing program; to approve and register the form of a manufacturers label; and to withdraw the manufacturers authority to use that label if certified products do not meet specification(s).

Management and control of SGCC is vested in a board of directors, half representing industry and half representing the public interest. To prevent industry dominance of SGCC actions, the public interest directors are empowered to veto any action of the board regardless of the number of directors present at a meeting.

The certification program uses approved testing laboratories under the supervision of a qualified administrator, retained by and responsible to SGCC, who is unaffiliated with any manufacturer of safety glazing materials.

The manufacturer of a product listed in this directory has certified that the labeled material complies with the applicable specification(s). Compliance of a certified product with the applicable specification(s) is checked periodically by an approved testing laboratory under the supervision of SGCC.

All manufacturer's of safety glazing products are eligible and encouraged to apply for SGCC certification. However, products are not certified until a test to the applicable specification(s), conducted at an approved testing laboratory, indicates compliance.

Once certified by SGCC, a product is assigned an exclusive certification number to identify it and the plant at which it is made. After which, to insure continued adherence to the specification(s), SGCC independently selects, at least twice in each year, samples during unannounced visits to the manufacturing plant or randomly from the market place to be tested to the applicable specification(s). Consequent to a test result showing compliance with the applicable specification(s), SGCC authorizes the continued use of the certification number and the product listing in this directory.

This directory is divided into three basic listings: the first is by numerical sequence of certified product numbers listing the manufacturer holding that number; the second is of manufacturers listed alphabetically by plants and the approved products manufactured at those plants; the third is by product type listing all manufacturers and their plants approved for each product type. There is also an alphabetical listing, by manufacturers, illustrating a label typical of the manufacturer. The table of contents lists various procedural and administrative information, as well as information as to where officers and directors may be located.

Upon request, information from SGCC concerning a statement of procedures, or copies of minutes, are available to manufacturers, public interest groups and individuals.

## PROCEDURAL GUIDE

### FOREWORD

The acceptance, of a certified safety glazing material, comes from the conviction such certification assures a high level of safety and quality; and that the integrity of the identifying mark or certification label is reliably maintained by a competent certifying agency.

Both ANSI Z97.1-1984 and 16 CFR 1201 provide sound technical basis for a high level of safety. With the addition of independent administration, plus periodic routine sampling and product evaluation, a program of product certification is maintained which provides an independent third-party certification and testing program. The Certification Program described herein is predicated upon the concept of independent and impartial administration of the certification procedures which are incorporated in the SGCC license agreement.

The SGCC License Agreement is the governing document for the operation of the Certification Program. The Procedural Guide, which is not an extension of this document, is for information and guidance; and serves to describe administrative procedures; and to insure the uniform and equitable operation of the Certification Program.

### GENERAL INFORMATION

#### THE CERTIFICATION CONCEPT

The SGCC Certification Program is based on the conviction no standard of safety or quality is good without the continuous adherence of the licensees' certified products to that standard.

To buyers, specifiers, code officials and users, the SGCC certification label offers the manufacturer's assurance his safety glazing material has been produced in conformance to ANSI Z97.1-1984 and/or 16 CFR 1201.

Federal law, many state statutes, municipal ordinances and building codes require glazing materials, installed in certain defined locations, comply with ANSI Z97.1-1984 and/or 16 CFR 1201.

#### WHO CAN BECOME A LICENSEE?

Every manufacturer of safety glazing materials is eligible, on a voluntary basis, to participate.

#### WHO CONDUCTS THE PROGRAM?

The Safety Glazing Certification Council, a non-profit corporation, is the sponsor of the Certification Program. SGCC supervises the Certification Program under which its administrator periodically checks and reports compliance of the products having the SGCC certification label with the requirements of ANSI Z97.1-1984 and/or 16 CFR 1201.

### ADMINISTRATION

ETL Testing Laboratories, Inc. (ETL), is the independent Administrator of the Certification Program. ETL maintains the SGCC office of certification and conducts the routine day-to-day business. All transactions are done in the name of SGCC.



#### HOW CAN YOU BECOME A LICENSEE?

The following must be accomplished before SGCC can certify an item of safety glazing material:

- a) The manufacturer signs two copies of the SGCC License Agreement (including notarization of the Affidavit, Appendix A) and sends these to SGCC. SGCC will countersign both copies and return one to the manufacturer.
- b) The manufacturer directs an SGCC approved testing laboratory, of its own choosing, to send SGCC one copy of a valid test report indicating the 'initial' or 'prototype' samples submitted for testing are in full and complete compliance with ANSI Z97.1 and/or 16 CFR 1201.
- c) The manufacturer sends to SGCC the six-month certification fee for each item which is to be certified.

Having received all of the above items, SGCC sends to the licensee the notice of product certification which includes an SGCC certification number. This number must be incorporated into the permanent label affixed to each piece of certified safety glazing material. The certified item will be listed in the next edition of the Certified Products Directory.

#### HOW THE CERTIFICATION PROGRAM WORKS

Safety glazing materials must meet or exceed the applicable specification(s) before they can be certified by SGCC.

SGCC recognized approved testing laboratories conduct all tests. All laboratories, whose test reports are utilized by the Certification Program, shall be approved by the SGCC Certification Committee. Initial or prototype tests are performed at an approved testing laboratory selected by the licensee. Routine evaluation samples are tested by an approved testing laboratory selected, with the concurrence of the administrator, by the licensee.

#### ADMINISTRATOR AUTHORIZES CERTIFICATION

As sole judge of compliance with the applicable specification(s), the administrator authorizes a product which has been approved to be listed in the Certified Products Directory.

Licensees label safety glazing material, with the assigned SGCC number, within the limits of the product size tested. If 34 by 76 inches is the size of the initial or prototype test sample, certification is extended to all sizes and the permanent label contains the letter U, designating unlimited size. The letter L, contained within the permanent label, denotes certification is limited to the width and length of the initial or prototype test sample.

#### PRODUCTS LISTED IN CERTIFIED PRODUCTS DIRECTORY

Approved products are listed in a Certified Products Directory, published every six months, which is sent to door, sash and building products manufacturers, glazing contractors, home builders, architects, regulatory agencies and code-making groups, etc. Directory listings contain the licensee's name, plant location, product description and examples of a label typical of that permanently affixed by a licensee to each piece of safety glazing material certified by SGCC.

The administrator selects, at least twice in each year, to be tested to the applicable specification(s), during unannounced visits, samples of certified safety glazing material at the manufacturing plant or from the market place.

## COMPLIANCE SAFEGUARDS

### HOW IS COMPLIANCE ASSURED

Any certified product determined, in the course of routine sampling and evaluation, not in compliance with the applicable specification(s), is subject to the removal of certification. The licensee is given 30-days in which to demonstrate, to the satisfaction of the Administrator, compliance and, if not, certification is automatically withdrawn at the end of the 30-day period.

### CHALLENGING A CERTIFIED PRODUCT

Complaints of non-compliance, from any source, will be investigated promptly by SGCC upon receipt of a written complaint and surety deposit. A minimum surety deposit of \$1,000 will be required for each complaint of non-compliance. The surety deposit will be assessed at the rate of \$350 per man day plus the reasonable cost of travel and the maintenance entailed in resolving such incidents. Refunds of part or all of the surety deposit will be made when applicable. All costs involved will be paid from the complainant's surety deposit, unless the investigation proves non-compliance, in which case all costs will be borne by the licensee found to be in non-compliance.

### WITHDRAWAL OF CERTIFIED PRODUCT

Any product which has been certified by SGCC may be voluntarily withdrawn from the Certification Program by a licensee at any time.

## COSTS

### WHAT DOES THE PROGRAM COST?

The licensee pays, in advance, all projected fees for future routine evaluations to SGCC on a six-month basis. A licensee is invoiced for each certified item separately listed in the Certified Products Directory.

Initial certification for each item is for a period of six months. However, the subsequent invoice to a licensee will be prorated to the nearest whole month in such manner that participation in the Certification Program will be on a January 1 to July 1 and July 1 to January 1 basis.

## CERTIFICATION PROGRAM DOCUMENTS AND AGREEMENTS

### LICENSE AGREEMENT

This agreement, incorporating independent program administration and routine periodic independent sampling and evaluation, governs the relationship between SGCC and the licensee.

Future amendments or revisions to the License Agreement will be recommended by the SGCC Certification Committee and enacted by the SGCC Board of Directors.

### EFFECTIVE DATE, DURATION AND TERMINATION

The License Agreement, effective from the date of its execution, has a validity of six months (adjustable to a January 1 to July 1 or a July 1 to January 1 basis) and, unless revoked by SGCC for causes set-forth in the document, is automatically renewed for successive additional periods of six months, unless either party gives notice at least 60 days prior to the date of expiration that cancellation is requested.

Upon its proper execution and acceptance by SGCC, the preissued certification number bond informs a licensee of the certification number of an item to be certified in the future. If the licensee marks production with the certification number, prior to actual certification, the bond is forfeited to SGCC.

Upon its proper execution and acceptance by SGCC, the test release bond permits the continuation of certification of an item when production facilities are shut down. If the licensee does not notify SGCC, within one week of the resumption of production, the bond is forfeited to SGCC.

#### ADMINISTRATIVE SERVICE AGREEMENT

This agreement, entered into by SGCC and ETL Testing Laboratories, Inc., governs the relationship between SGCC and ETL, the independent administrator. In general, it provides that the Administrator

- a) samples certified products routinely;
- b) has the right to witness any and all testing required by the program;
- c) reviews all test reports in order to determine compliance of the certified product with the applicable specification(s);
- d) inspects and approves all in-plant and test laboratory test facilities for use in this Certification Program (test laboratories are approved by the SGCC Certification Committee);
- e) publishes and mails the SGCC certified products directory on or about January 1 and July 1 of each year;
- f) handles all routine clerical duties of SGCC with respect to certification matters;
- g) acts as SGCC treasurer, invoices licensees, maintains a bank account and disburses funds (fiscal reports are made to the SGCC Certification Committee);
- h) furnishes all testing except for initial or prototype tests;
- i) attends all scheduled meetings of the SGCC Certification Committee and;
- j) in all of its actions, acts in the name of SGCC.

#### CERTIFIED PRODUCTS DIRECTORY

This directory contains a listing of the certified safety glazing materials of each licensee.

#### CERTIFICATION LABEL

The certification label, containing a number that refers to the listing in the Certified Products Directory, is permanently affixed to each piece of certified safety glazing material by the licensee. The listing, in the directory, provides a complete product description including licensee's name, plant location, etc.

#### PROGRAM RESPONSIBILITY

The SGCC Board of Directors has overall responsibility for the well being and acceptance of the Certification Program by industry, building officials and the public. It also bears corporate legal responsibility.

The SGCC Certification Committee has the responsibility for the general procedure and policy pertaining to the conduct of the Certification Program. As a part thereof, it:

- a) establishes certification "guidelines;"
- b) determines, where a question is raised by a licensee or the Administrator, the applicability of the specification(s) in specific situations.

c) approves testing laboratories;

d) determines which specifications are to be designated effective for the purposes of product certification and the date or dates on which they become effective;

e) recommends to the SGCC Board of Directors changes to be made in the license agreement.

#### COMMUNICATIONS

In all matters concerning the administration and implementation of the SGCC certification program, correspondence may be directed to any of the following:

Mr. Robert L. Brown, SGCC President  
c/o Virginia Glass Products Corporation  
P. O. Box 5431  
Martinsville, VA 24115  
Telephone: 703-956-3131

Mr. Henry A. Gorry, Chairman  
SGCC Certification Committee  
c/o Guardian Industries Corp.  
43043 West Nine Mile Road  
Northville, MI 48167  
Telephone: 313-347-0100

Mr. Claude F. Robb  
Administrative Manager  
ETL Testing Laboratories, Inc.  
Route 11 - Industrial Park  
Cortland, NY 13045-0950  
Telephone: 607-753-6711

## CERTIFICATION GUIDELINES AND INTERPRETATIONS

For guidance in certifying safety glazing materials, the SGCC Certification Committee has adopted the following:

## GENERAL

## G.1

Participation in the Certification Program will be on a January 1 to July 1 and July 1 to January 1 basis. Charges will be prorated to the nearest whole month based on the date of approval of certification.

## G.2

Tests for initial compliance of safety glazing materials to ANSI Z97.1-1984 and/or 16 CFR 1201 will be accepted from any testing laboratory approved by the SGCC Certification Committee.

## G.3 (ANSI ONLY)

Paragraph (1) Section 5.1.3 of ANSI Z97.1-1984 is intended to apply to laminated, wired and organic coated glass only. Paragraph (2) is intended to apply to tempered glass only. Paragraph (3) is intended to apply to plastics only. Paragraph (4) is intended to apply to any safety glazing material.

## G.4

For insulating glass units to be considered safety glazing material, each light in the construction must be of safety glazing material.

## G.5

The SGCC item number, when used as part of a permanent label, designates the name of the licensee (participant) and also the location of the manufacturing plant.

## G.6

a) All test specimens, except prototype samples, must be marked with the correct SGCC permanent label prior to testing in order to be considered a valid sample. The administrator shall construe the absence of a correct permanent label as a failure to comply with the specifications. In such case of noncompliance, Sections a, c, and e of G.11 shall be followed.

b) The laboratory shall verify that the label has the correct SGCC number, designation of the applicable specification(s) and CPSC categories, nominal thickness, and certified size designation (U or L).

c) The testing laboratory is to advise the administrator of any specimen to which the correct SGCC permanent label is not affixed. The testing laboratory will be instructed by the administrator not to test but hold the sample.

d) The administrator will inform the licensee of the situation and direct (by letter) the testing laboratory to commence testing no later than 30 days hence. Until that time the testing laboratory is instructed to make these specimens available to the licensee at their convenience (the specimens are to remain at the testing laboratory) in order that the licensee may point out or show them that in fact the SGCC permanent label is correct or agree that in fact the correct SGCC permanent label is not present. In cases of any dispute between the licensee and the testing laboratory the decision of the administrator shall be final. The licensee shall not mark specimens after receipt at the testing laboratory.

## (ANSI ONLY)

e) As of July 1, 1985 the SGCC permanent label must contain ANSI Z97.1-1984 in order to be considered a correct permanent label for purposes of Guideline G.6.

## G.7 (ANSI ONLY)

Safety glazing materials for which certification is requested for indoor use only shall be subjected to the provisions of section 5.1 (impact tests) and 5.4 (aging tests) of ANSI Z97.1-1984 irrespective of the composition or construction of the glazing material. Like products and materials produced in the same manner as samples submitted for test shall be legibly and permanently marked in one corner with the words "Indoor Use Only" and the SGCC identification number.



## G.8 (ANSI ONLY)

After initial compliance with a sample size as stated in Paragraph 4.3, testing of other sizes which represent the sizes manufactured may be allowed, provided however that all sizes produced up to the size provided by Paragraph 4.3, ANSI Z97.1-1984 are exposed to selection for testing.

## G.8 (CPSC ONLY)

After initial compliance with a sample size as stated in Table 1, testing of other sizes which represent the sizes manufactured may be allowed, provided however that all sizes produced up to the size provided in the standard 16 CFR 1201 are exposed to selection for testing.

## G.9

Specimen sizes up to 34 inches by 77 inches shall be valid samples when independently obtained by the administrator for purposes of routine evaluation.

## G.10

In cases where the administrator samples and identifies specimens for routine evaluation of the licensee's premises or requests licensee's samples when none are available at the time of sampling:

a) The licensee be permitted 6 weeks in which to effect delivery of said specimens to the administrator's designated testing laboratory.

b) Failure to act as specified above shall be construed by the administrator as failure of the said specimens to comply with the specifications and the administrator shall act as provided for in license agreement A.6.

## G.11

In cases where a routine evaluation sample fails to comply with the specifications:

a) Written notice and an invoice shall be sent to the licensee by the administrator stating that within 30 days from the date of such notice the licensee must submit a retest sample to the testing laboratory selected by the licensee with the concurrence of the Administrator.

Certification shall be removed if the sample and payment are not received within the allotted 30 days or if the sample submitted fails to comply with the specifications.

b) Within 3 months the administrator shall obtain an additional random sample for evaluation (in addition to the routine evaluation sample obtained twice a year). The administrator shall be certain that this additional sample is of recent production.

c) At the option of the administrator, specimens submitted under a) above shall be either prototype size and pattern or identical to those previously sampled and of recent production.

d) Certification shall be removed if the additional random sample obtained in b) above fails to comply with the specifications.

e) All costs related to G.11 are to be borne by the licensee.

## G.12

If a licensee who manufactures a certified product outside the 48 contiguous states feels that in a particular instance that he will be unable to act as provided for in paragraph a) of SGCC Guideline G.11, he should notify the administrator. The administrator will then contact the chairman of the certification committee for a decision as to what action is to be taken.

## G.13

In cases where a certified item is produced infrequently or in small quantities so as to make it difficult for the administrator to obtain routine evaluation samples, the licensee shall notify the administrator at least two weeks in advance of any production of such item.

## G.14

The administrator shall remove certification from all of any licensee's products for failure to pay any monies due to SGCC within 30 days of invoice date. (Reference license agreement A.2, A.12 and B.6)

## G.15

In the situation where a licensee desires to recertify a product that previously had certification removed because of failure to comply with the specifications (label and thickness tolerances excepted), the product shall be routinely sampled four times during the first year. The costs involved shall be paid by the licensee.

## G.16

The nominal thickness designations in SGCC authorized permanent labels for safety glazing materials may be shown in metric units. The thickness will be expressed in millimeters, limited to two decimal places, and will have the suffix "mm."

## G.17

All safety glazing materials that are not symmetrical from surface to surface shall be impacted two specimens on one side and two specimens on the other side.

## G.18

Certified and permanently labeled safety glazing materials such as laminated glass, wired glass, rigid plastic or organic coated glass may be cut into smaller pieces by a distributor or installer after manufacture and it is not practical for each such smaller piece to bear a manufacturer's permanent label when finally installed in a building. When this is the case, then the distributor or installer shall apply a permanent label to each piece, which states his name and certifies that he cut the piece from material that was properly labeled in accordance with the requirements of SGCC.

For the purpose of this guideline, a permanent label is defined as one that will remain permanently legible and would be destroyed in attempts to remove it from the product.

## G.19

The semi-annual invoicing date for certification fees shall be April 1 and October 1 of each year and the administrator is instructed to take those steps necessary to remove certification from licensees for failure of payment prior to closing date of the certified products directory.

## G.20

For certification purposes a panel of glazing material composed of multiple components (such as leaded glass) may be tested and interpreted as a unit.

## G.21

A preissued SGCC certification number shall be issued by the administrator upon receipt of a properly executed license agreement and a properly executed bond form in the amount of \$10,000. The preissued SGCC certification number, if not used by the licensee, will be terminated twelve months from the date of issue. The condition of the bond is such that if the licensee does not label any safety glazing material with the preissued certification number prior to formal certification then the bond shall be void.

## G.22

In the case of wired glass (ANSI ONLY), plastics and organic coated glass certification of a patterned product may be extended to cover other patterns provided:

- a) The nominal thickness of the proposed alternate and all aspects other than pattern are the same as the certified product.
- b) The administrator of the certification program is provided with a copy of a prototype test from an approved laboratory, showing satisfactory compliance with the impact requirements of ANSI Z97.1-1984 and/or 16 CFR 1201 for each alternate pattern proposed.
- c) The certification committee is provided with a 6 by 6-inch sample of each proposed alternate for its record and file. This must be sent to the administrator of the certification program.

After admission under blanket certification covering patterned products, any such patterns available may be selected by the administrator for routine sampling and testing.

In the case where a routine evaluation sample covered under a blanket certification fails to comply with the specifications the situation requires that particular product be submitted for the retest sample required by Guideline G.11a and also that particular product be sampled by the administrator for the additional sample required by Guideline G.11b.

## G.23

There may be instances when a production facility is temporarily inoperative. This could be caused by, but not limited to, equipment repair or replacement, labor difficulties, energy or material shortages or economic considerations. As a consequence, samples for routine testing may not be available for long periods. The licensee may desire to retain certification during the shutdown period. This shall be done as follows:

- a) Prior to or within 2 weeks after the shutdown, the licensee shall inform the SGCC administrator by certified mail.

b) The SGCC administrator will immediately supply the licensee with test release bond forms for submission by the licensee. A separate bond shall be submitted for each certified product affected.

c) Within 2 weeks after receipt of the bond forms, the licensee shall submit them to the SGCC administrator.

d) During the period covered by the bond the licensee shall retain certification, contingent upon payment of normal certification fees and meeting all other licensee obligations. Bonds will terminate 90 days after acceptance by SGCC but may be renewed by the licensee any number of times. Renewal is an obligation of the licensee and requires all steps listed herein.

e) Within one week after re-activation of the production facility the licensee shall 1) notify the SGCC administrator by certified mail and 2) submit samples from the first weeks production to an SGCC approved laboratory for testing. In cases where more than one certified product is produced with the same equipment, samples of each must be furnished for testing within the first month. These will be considered as the routine samples for retesting for the six months period during which they are submitted.

f) Failure of the licensee to comply with any of the preceding shall be the basis for removal of certification from the affected products.

#### G.24

When a licensee's production equipment will not produce a size of 34 by 76 inches and the licensee wishes to certify a) a size whose smaller dimension exceeds 34 inches, material shall be tested whose smaller dimension is 34 inches or b) a size whose larger dimension exceeds 76 inches, material shall be tested whose larger dimension is 76 inches.

#### G.25 (ANSI ONLY)

When a licensee specifically and voluntarily desires to use a SGCC permanent label on their product that denotes compliance with ANSI Z97.1-1966, ANSI Z97.1-1972, ANSI Z97.1-1975, and ANSI Z97.1-1984 or combination thereof, that they notify SGCC in writing of the certified item that they desire to so mark. SGCC will, at the request of the licensee, conduct compliance tests to ANSI Z97.1-1966, ANSI Z97.1-1972, ANSI Z97.1-1975 and ANSI Z97.1-1984 or combination thereof. A single set of four test specimens will be impacted to determine impact test requirements of all standards. Upon successful completion of compliance tests the safety glazing materials are permanently labeled and listed in the SGCC certified products directory as having met the requirements of 1966, 1972, 1975 and 1984 versions or combination thereof the ANSI Z97.1 standard. Any costs involved shall be paid by the licensee.

#### G.26

Any label that can be removed intact shall not be considered permanent and is not acceptable to SGCC.

#### G.27

A licensee, by executing a supplementary license agreement, can elect to be in both ANSI Z97.1-1984 and 16 CFR 1201 programs under one SGCC number provided the licensee submits four specimens to be impact tested to ANSI Z97.1-1984 and one specimen to be impact tested to 16 CFR 1201 (all safety glazing materials that are not symmetrical from surface to surface, shall be impacted one specimen on one side and one specimen on the other side for 16 CFR 1201). If any one specimen of the composite sample fails, the entire composite sample will be considered to have failed to comply with both specifications.

#### G.28

The administrator shall construe noncompliance with thickness tolerance as a failure to comply with the specifications. In such cases of noncompliance, Sections a, c, and e of G.11 shall be followed.

#### G.29

For the purposes of certification, the thickness requirements of Specification ASTM C1036-85 shall apply.

#### G.30

For certification purposes, the minimum thickness shall be 0.092 and the maximum thickness shall be 0.108 inches for 0.100 inch glass.

#### G.31

For certification purposes, the nominal thickness of single strength patterned glass shall be 0.094 inches and thickness tolerances shall be plus 0.047 inches and minus 0.015 inches.

#### G.32 (CPSC ONLY)

When testing to category II requirements, the administrator shall select specimens greater than 9 square feet in surface area.

**TEMPERED TRANSPARENT GLASS****T.1**

Certification of either flat glass or patterned glass will not cover the other except as noted in Guideline T.2. (Flat glass designates ground and polished plate, float and sheet glass.) Four specimens shall be used for impact testing as detailed at 16 CFR 1201.4(a)(1).

**T.2**

Polished plate glass and the rough glass blank from which it is produced will be considered to be of equal nominal thickness. Certification of tempered flat glass will therefore be interpreted as including tempered rough plate blank.

**T.3**

Certification of regular tempered glass will also cover tinted, heat absorbing and coated glasses of the same nominal thickness. Glasses of the same nominal thickness with a ceramic material applied as a continuous or partial coating to one or more surfaces prior to tempering are also covered.

**T.4**

In cases where certified glass is normally not available for sampling, the licensee may make an overrun (of four lights of prototype size that are to be marked with the date of production) when the item is in normal production and these will be accepted by the administrator if other samples are not available the administrator shall notify the licensee to submit prototype size samples to the administrator within six weeks.

**T.5**

Certification of any nominal thickness of tempered safety plate, float or sheet glass will also cover the other two types. ANSI Z97.1-1984 and 16 CFR 1201 do not require the permanent label on tempered safety glass to specify which type of glass is used. Nor is it required that the test specimens be identified in this regard.

**T.6**

Prototype test shall be conducted on bent specimens sampled from normal production run. The specimen size shall have a surface area of at least 50 percent of the maximum size for which certification is desired. Routine tests will be performed on bent specimens. The test apparatus shall be modified to clamp the vertical straight edges and to support the concave side of the curved edges. Impact shall be on the convex surface.

**TEMPERED PATTERNED GLASS****TP.1**

For the purposes of certification, the nominal thickness of patterned, figured, or rough rolled glass are the common fractions found in ASTM C1036-85. The permanent label must contain this fraction or a metric or decimal dimension within the tolerance of this thickness as published in ASTM C1036-85. Four specimens shall be used for impact testing as detailed at 16 CFR 1201.4(a)(1).

The patterns in each thickness will be classified as to the ratio of minimum to maximum thickness as follows:

Patterned depth class	Ratio
Shallow patterned glass	0.90 or above
Medium patterned glass	0.80 through 0.89
Deep patterned glass	0.79 or below

Certification will be by nominal thickness and patterned depth class. Any pattern in a certified thickness and patterned depth class is certified.

Certification of medium also covers shallow patterns of the same nominal thickness.

New or unlisted patterns must be submitted to the pattern subcommittee for classification and file, prior to certification. After measurement, the new pattern will be assigned to a patterned depth class.

In the case of 5/32 inch tempered patterned glass refer to ASTM C1048-85 because this thickness is not included in ASTM C1036-85.

Certification of deep also covers medium and shallow patterns of the same nominal thickness.

Certification of medium also covers shallow patterns of the same nominal thickness.

TP.2

The maximum thickness shall be recorded when measuring the thickness of patterned glass.

TP.3

For tempered patterned glass, one specimen must be weighed and the weight of ten square inches determined from the weight, width and height of that specimen to use for test purposes.

TP.4

For certification purposes, the nominal thickness of 210 tempered patterned glass shall be 0.210 inches and thickness tolerances shall be plus 0.031 inches and minus 0.016 inches.

TP.5

When medium patterned glass is not available for routine sampling, the licensee submitted specimens must be a medium pattern (a shallow pattern is not acceptable).

TP.6

When deep patterned glass is not available for routine sampling, the licensee submitted specimens must be a deep pattern (shallow or medium patterns are not acceptable).

#### LAMINATED GLASS

L.1

Certification of regular laminated glass will also cover tinted, heat absorbing and coated glasses, both flat and bent of the same nominal thickness. Four specimens shall be used for impact testing as detailed at 16 CFR 1201.4(a)(1).

L.2

In cases where certified laminated glass is normally not available for sampling the licensee may make an overrun (of four lights of prototype size that are to be marked with the date of production) when the item is in normal production and these will be accepted by the administrator if other samples are not available. Otherwise, when production samples are not available the administrator shall notify the licensee to submit prototype size samples to the administrator within six weeks.

L.3

Certification of 7/32 inch laminated glass also covers SS/DS and vice versa.

L.4

When a laminated glass is certified, other laminated glasses having the same thickness or thicknesses of glass and a greater thickness of plastic interlayer will be considered to be of equal nominal thickness and will be included in the certification.

L.5

Laminated safety glass need not be identified by type of base glass.

L.6

Thickness of the plastic interlayer shall be measured by the SGCC standard method.

L.7

For certification purposes the following thickness tolerances shall be used. Thickness tolerance shall apply only to the overall thickness. The plus tolerance shall be the sum of all the individual plus tolerances of each layer of the laminate. The minus tolerance shall be the sum of all of the individual minus tolerances of each layer of the laminate. Polyurethane interlayer shall have a thickness tolerance of plus or minus 0.015 inches.

The tolerance of the polyvinylbutyral (PVB) shall be based on the nominal thickness of the interlayer with a plus tolerance of 0.002 and a minus tolerance of 0.004 inches.

The tolerance of the polyvinyl copolymer acetate (PCA) shall be based on the nominal thickness of the interlayer with a plus tolerance of 0.002 and a minus tolerance of 0.004 inches.

L.8

When a laminated annealed glass is certified, other laminated glasses having the same thickness or thicknesses of heat strengthened or tempered glass and the same or greater thickness of plastic interlayer of the same chemical composition will be considered to be included in the certification.



## L.9

When laminated glass is not available for routine sampling, the licensee submitted specimens must contain the identical thickness plastic interlayer that was contained in the prototype specimens.

**WIRED GLASS (ANSI ONLY)**

## W.1

Certification of one polished wired glass may be applied to other polished wired glasses provided:

- a) The glass thickness of the candidate glass is nominally equal to the thickness of the glass that is certified.
- b) The wire diameter of the candidate glass is at least as great as the wire diameter in the glass that is certified.
- c) The spacing of the wires in the candidate glass is no greater than the spacing of the wires in the glass that is certified.
- d) SGCC has been presented with a test report indicating compliance of the candidate glass with the impact test requirements of ANSI Z97.1-1984.

After admission under the blanket certification covering wired glasses all wired glasses so certified must be exposed to random sampling at each examination although only one will probably be selected for testing.

**PLASTICS - GENERAL**

## P.1

Certification of one tint or color of rigid plastic will also cover other tints, colors, flat configurations or bent and formed configurations.

## P.1 - CPSC ONLY

One piece of at least one square foot area shall be used for testing the hardness and modulus of elasticity.

## P.2

For certifying all plastics covering a range of thicknesses, prototype impact tests are required of the minimum thickness and also of the maximum thickness (except that 0.250 inch thickness would be tested if the maximum thickness exceeds 0.250 inches). Only one certification number will be issued and shall be marked upon all thicknesses. Routine evaluation samples are to be selected by the administrator from any of the certified thicknesses.

## P.3

The following thickness tolerances shall be used for certification purposes:

Outdoor use plastic materials Class 1. Cast acrylic. (Including continuously cast sheet): As specified in Federal Specification LP-391, latest issue.

Outdoor use plastic materials Class 2. Extruded acrylic: As specified in Federal Specification LP-507, latest issue.

Outdoor use plastic materials Class 3. Extruded polycarbonate: As specified in Military Specification MIL-P-46144, latest issue.

Indoor use plastic materials Class 1: Plus or minus 10 percent of nominal thickness.

## P.4

The maximum thickness shall be recorded when measuring the thickness of patterned plastics.

## P.5

Certification of either smooth plastic or patterned plastic will not cover the other.

**PLASTICS - EXTERIOR USE**

## PE.1 (ANSI ONLY)

Sheet plastics for exterior use must comply with the applicable specification.

## PE.1 (CPSC Only)

Sheet plastics for exterior use must comply with 16 CFR 1201.4(e)(2)(ii)(A) accelerated weathering test Table 1 or simulated weathering test. The equipment shall be an apparatus commercially known as a "Weather-Ometer" or its function equivalent incorporating a carbon-arc. It shall be operated in accordance with "Standard Recommended Practice for Operating Light-and-Water-Exposure Apparatus (Carbon-Arc Type) for Exposure of Nonmetallic Materials," ASTM G 23069, March 21, 1969, as augmented for plastics (for plastic test specimens only) by "Standard Recommended Practice for Operating Light-and-Water-Exposure Apparatus (Carbon-Arc Type) for Exposure of Plastics," ASTM D 1499-64, August 31, 1964. Specimens shall be mounted and control specimens shall be used in the manner specified in the Standard at section 1201.4(d)(2)(ii)(A) or (B), as appropriate. An appropriate water spray cycle shall be used. The specimens shall be exposed in the Weather-Ometer for a period of time which, irradiation equivalent to the accumulated ultraviolet irradiation of 2,000 plus or minus 1 hours of exposure in a twin enclosed carbon-arc Weather-Ometer. Evaluate the test results by using the test criteria set forth in the Standard at section 1201.4(e)(2)(ii)(A) or (B), as appropriate.

Intensified weathering test. The test equipment shall be the Equatorial Mount with Mirrors for Acceleration with Water, such as that found at the Desert Sunshine Exposure Tests, Inc. near Phoenix, Arizona. It shall be operated in accordance with "Standard Recommended Practice for Operating EMMA (QUA)R - A Fresnel-Concentrator Accelerated Weathering Machine Employing Natural Sunshine as Source," ASTM draft standard dated October 1, 1976. The standard water spray cycle of eight minutes on followed by 52 minutes off shall be used. Mounting of specimens and use of control specimens shall be specified in the Standard at section 1201.4(d)(2)(ii)(A) or (B), as appropriate. The specimens shall be exposed to 375,000 plus or minus 10,000 langley (375 plus or minus 10 kilo-calories per square centimeter) or irradiation. Evaluate the test results by using the test criteria set forth in the Standard at section 1201.4(e)(2)(ii)(A) or (B), as appropriate.

Outdoor weather test. The specimens shall be exposed in outdoor exposure test racks set facing the equator at an angle from the horizontal equal to the latitude of the exposure site. The specimens shall be exposed to 375,000 plus or minus 10,000 langley (375 plus or minus 10 kilo-calories per square centimeter) or irradiation. Mounting of specimens and use of control specimens shall be as specified in the Standard at section 1201.4(d)(2)(ii)(A) or (B), as appropriate. Evaluate the test results by using the test 1201.4(d)(2)(ii)(A) or (B), as appropriate.

## PE.2 (ANSI ONLY)

Certification of plastics for exterior use shall be permitted prior to completion of ANSI Z97.1-1984 weathering tests (paragraph 5.3) provided that a considered expert opinion states that the infrared spectrogram indicates that the plastic is an acrylic or UV inhibited polycarbonate of proven weatherability. Certification shall be removed if compliance with the weathering test is not demonstrated within six months of the certification date.

## PE.3

For all plastics requiring UV weathering tests an infrared spectrogram shall be obtained of all prototype weathering specimens. An infrared spectrogram shall be obtained of all routine evaluation samples and shall be compared with that of the prototype in lieu of conducting weathering test. The spectral scan shall be made using a minimum film thickness of 0.002 inches or its equivalent.

## PE.4

When initial Charpy unnotched specimens do not break, then notched specimens shall be used for both initial and exposed Charpy impact testing. The specimens shall be notched prior to UV exposure and the notched surface shall be exposed to the UV.

## PLASTICS - INDOOR USE ONLY

## PI.1 (ANSI ONLY)

Sheet plastics used in indoor applications only, do not have to comply with paragraph 5.3 of ANSI Z97.1-1984 (UV Weathering) but must comply with paragraph 5.4.

## PI.1 (CPSC ONLY)

Sheet plastics used in indoor applications only, must comply with Table 1 in 16 CFR 1201.

## PI.2

The permanent label authorized by SGCC must include "Indoor Use Only."

## PI.3

For all indoor plastics requiring aging tests, an infrared spectrogram shall be obtained of all prototype aging specimens. An infrared spectrogram shall be obtained of all routine re-evaluation samples and shall be compared with that of the prototype in lieu of conducting aging tests. The spectral scan shall be made using a minimum film thickness of 0.002 inches or its equivalent.

**LEADED PATTERNED ANNEALED GLASS - (ANSI ONLY)****LG.1**

Certification of one leaded patterned glass (annealed) may be extended to cover other patterns (on the glass surface) provided:

- a) The nominal thickness of the proposed alternate and all aspects other than pattern are the same as the certified product.
- b) The administrator of the certification program is provided with a copy of a prototype test from an approved laboratory, showing satisfactory compliance with the impact requirements of ANSI Z97.1-1984 for each alternate pattern proposed.
- c) The certification committee is provided with a 6 by 6 inch sample of each proposed alternate for its record and file. This must be sent to the administrator of the certification program.
- d) After admission under blanket certification covering leaded patterned glass (annealed), any such patterns available may be selected by the administrator for routine sampling.

**LG.2**

Certification of one diamond shaped leaded patterned glass (annealed) may be extended to cover other sizes of diamonds provided: a) All aspects of the product except diamond size is the same as the certified product.

b) The administrator of the certification program is provided with a copy of a prototype test from an approved laboratory, showing satisfactory compliance with the impact requirements of ANSI Z97.1-1984 for each alternate size diamond proposed.

c) The certification committee is provided with a 6 by 6 inch or a proper and representative sample of each proposed alternate for its record and file. This must be sent to the administrator of the certification program.

After admission under blanket certification, any such size diamond available may be selected by the administrator for routine testing.

**LG.3**

For leaded diamond patterned glass (annealed) the tolerance for diagonal came center dimensions shall be plus or minus 12 percent.

Prototype samples must have diagonal came center dimensions 10 percent greater than nominal. Diamond size listed in the certified products directory shall be nominal dimensions.

**ORGANIC COATED GLASS****AG.1**

Thickness of the applied plastic coating shall be measured by the SGCC standard method. Four specimens shall be used for impact testing as detailed at 16 CFR 1201.4(a)(1).

**AG.2**

The SGCC authorized permanent label, which complies with Guideline G.26 must be imprinted upon or applied to a surface of the plastic for all plastic coated annealed glasses.

**(ANSI ONLY)**

Prototype test shall be conducted on bent specimens of the surface area at least 50 percent of the maximum size for which certification is desired. Routine tests may be conducted on flat or bent specimens. The test apparatus shall be modified to clamp the vertical straight edges and to support the concave side for the curved edges. Two specimens shall have organic coating on the concave surface and two on the convex surface. Impact shall be on the convex surface.

## SGCC LABEL REQUIREMENTS

## GENERAL

Unless the SGCC certification label is permanently affixed to each piece of safety glazing material, it is not covered by the SGCC certification program. The labels illustrated in this certified products directory are typical of those found on each piece of safety glazing material.

The permanent label must contain the correct SGCC number, ANSI Z97.1-1984 and/or 16 CFR 1201 (and category). The nominal thickness and the letter U or L indicating certified size.

For labeling purposes, a line of demarcation shall separate those specifications covered by the SGCC number from any other specifications the licensee may wish to reference.

For purposes of Guideline G.6 "SGCC-xxx/yyy" shall be the only correct designation other than "SGCC-xxx" and "SGCC-yyy" when an identical item is in both the ANSI and CPSC programs. (See examples below).

The Permanent label must contain identification of the plant at which the product was made and the name or trade mark of the licensee.

The permanent label must be affixed to certified products only at the time and place of manufacture.

The permanent label must be affixed only to safety glazing materials, of the licensee's own manufacture, which are certified in the SGCC certification program.

The permanent label must not be sold, transferred or otherwise disposed of in any manner other than being affixed to the licensee's certified production.

The permanent label must not be affixed to any product from which certification has been withdrawn or which is produced with a process basically different from the one used to manufacture the initial or prototype samples.

## ANSI (ONLY)

"After having successfully passed the appropriate tests, like products and materials produced in the same manner as samples submitted per test shall be legibly and permanently marked in one corner with.....the characters "ANSI Z97.1-1984 - INDOOR USE ONLY" and shall be marked also with the manufacturer's distinctive mark or designation." Quoted from ANSI Z97.1-1984.

"Organic-coated glass materials shall be permanently marked on the organic coating with a label, including the phrase, "GLAZE THIS SIDE IN" to indicate to the installer, inspector or user which side of the organic-coated glass should be exposed to the elements if there is a specific side that should be exposed." Quoted from ANSI Z97.1-1984.

## CPSC (ONLY)

"Any glazing material that for accelerated environmental durability tests meets only the requirements of 1201.4 (e)(ii)(c) entitled "Plastic (indoor service)" shall bear the statement "INDOOR USE ONLY" as a part of the permanent label." Quoted from 16 CFR 1201.

"Organic-coated glass that has been tested for environmental exposure from one side only must bear a permanent label on the coating stating "GLAZE THIS SIDE IN" and shall bear in the central 50 percent of the surface in letters at least 1/4" inch high: "SEE PERMANENT LABEL FOR IMPORTANT MOUNTING INSTRUCTIONS." The latter message shall be attached to either side of the glazing by any means which shall ensure the message will remain in place until installation." Quoted from 16 CFR 1201.

## EXAMPLES:

ANSI Z97.1-1984  
16 CFR 1201 II  
SGCC-123/691 1/4 U

ANSI Z97.1-1984 SGCC - 123 1/4 U  
16 CFR 1201 II SGCC-691

CLASSIFIED TEMPERED GLASS PATTERNS1/8 inch shallow

(01) P-516	(02) Luxlite	(03) Factrolite	(09) Spraylite	(32) Muralex
(34) Velvex	(36) Ribbed	(37) Aquatex	(38) Finetex	(39) Industrex
(82) Pattern 62	(83) Pointex	(86) Showerlite	(87) Heliolite	(117) Solatex
(120) Sunadex	(147) Solatex I	(150) Solatex II		

1/8 inch medium

(04) Rattan	(05) Cotswold	(06) Patchwork	(07) Burlap	(08) Smooth Rough
(11) Flemish	(31) Skytex	(33) Seashell	(35) Flax	(52) Pattern 73
(56) Syenite	(57) Pattern 229	(154) Rain	(160) Model 10	(163) Model 11
(164) Model 12	(165) Spotswood			

1/8 inch deep

(10) Autumn

5/32 inch shallow

(59) Luxlite	(60) Factrolite	(64) Spraylite	(70) Muralex	(72) Velvex
(74) Ribbed	(75) Aquatex	(76) Finetex	(81) Pattern 6	(88) Pattern 100
(118) Solatex	(121) Sunadex	(123) P-516	(124) Heliolite	(126) Pattern 62
(127) Mistrion Ace	(128) Showerlite	(148) Solatex I	(151) Solatex II	(153) Flax
(156) Clar 104	(157) Model 10	(158) Pontilhado	(161) Model 11	(162) Model 12

5/32 inch medium

(61) Cotswold	(62) Burlap	(63) Smooth Rough	(66) Flemish	(69) Skytex
(71) Seashell	(73) Flax	(77) Pattern 73	(78) Syenite	(79) Pattern 229
(80) Pattern 76	(130) Cathedral	(146) Pattern 28	(155) Rain	

5/32 inch deep

(65) Autumn	(67) Oceanic	(68) Roundel
-------------	--------------	--------------

3/16 inch shallow

(50) Pattern 62	(51) P-516	(54) Showerlite	(116) Heliolite	(119) Solatex
(122) Sunadex	(125) Spraylite	(131) Industrex	(132) Velvex	(133) Aquatex
(134) Pattern 100	(135) Pattern 6	(136) Burlap	(137) Factrolite	(138) Satinlite
(139) Pluralite	(140) Flax	(141) Skytex	(142) Chinchilla	(149) Solatex I
(152) Solatex II	(159) Model 10			

3/16 inch medium

(58) Pattern 76	(143) Seashell	(144) Syenite	(145) Flemish
-----------------	----------------	---------------	---------------

3/16 inch deep

(12) Oceanic	(13) Roundel	(41) Lozenge
--------------	--------------	--------------

210 inch shallow

(89) Velvex	(90) Muralex	(91) Industrex	(92) Aquatex	(93) Pattern 100
(94) Pattern 6	(95) Pattern 62	(96) Spraylite	(97) Burlap	(98) Factrolite
(99) Satinlite	(100) Luxlite	(101) J-3	(102) P-516	(103) Smooth Rough
(105) Cascade	(106) Pluralite	(108) Flax	(110) Skytex	(115) Chinchilla
(166) Sportswood				

210 inch medium

(107) Seashell	(109) Beadex	(111) Syenite	(112) Flemish	(113) Textured Linex
----------------	--------------	---------------	---------------	----------------------

210 inch deep

(104) Lozenge	(114) Broadlite
---------------	-----------------

7/32 inch shallow

(14) Velvex	(15) Muralex	(16) Industrex	(17) Aquatex	(18) Pattern 100
(19) Pattern 6	(20) Pattern 62	(21) Spraylite	(22) Burlap	(23) Factrolite
(24) Satinlite	(25) Luxlite	(26) J-3	(27) P-516	(28) Smooth Rough
(30) Cascade	(42) Pluralite	(44) Flax	(46) Skytex	(55) Textured Plate
(84) Chinchilla	(129) Orange Peel			

7/32 inch medium

(43) Seashell	(45) Beadex	(47) Syenite	(48) Flemish	(49) Textured Linex
---------------	-------------	--------------	--------------	---------------------

7/32 inch deep

(29) Lozenge	(53) Boardlite
--------------	----------------



<u>SGCC NO.</u>	<u>SGCC NO.</u>	<u>SGCC NO.</u>
12 Virginia Glass Products	594 Tempglass, Inc	979 Tempglass Eastern, Inc
14 Virginia Glass Products	595 Tempglass, Inc	981 Tempglass Eastern, Inc
24 AFG Industries	598 AFG Industries	982 Tempglass Eastern, Inc
28 AFG Industries	603 Downey Glass Co - ANSI	986 Temp-Tech Industries, Inc
40 Guardian Industries - ANSI	604 Downey Glass Co - ANSI	999 Anglass Industries - ANSI
41 Guardian Industries - ANSI	605 Downey Glass Co - ANSI	1000 Anglass Industries - ANSI
54 Hamilton Glass Products	606 Downey Glass Co - ANSI	1002 Downey Glass Co - ANSI
57 Hamilton Glass Products	607 Downey Glass Co - ANSI	1003 Downey Glass Co - CPSC
64 PPG Industries	608 Downey Glass Co - ANSI	1004 Guardian Industries - ANSI
70 PPG Industries	609 Downey Glass Co - ANSI	1034 Shaw Glass Co Inc
89 AFG Industries	630 Downey Glass Co - ANSI	1035 Shaw Glass Co Inc
90 AFG Industries	631 Guardian Industries - ANSI	1036 Shaw Glass Co Inc
93 Virginia Glass Products	633 Guardian Industries - ANSI	1037 Shaw Glass Co Inc
94 Virginia Glass Products	639 ACI Glass	1039 Tempglass, Inc
95 Virginia Glass Products	640 ACI Glass	1041 Ardco, Inc - ANSI
118 Flex-O-Glass, Inc	654 OPG Industries - ANSI	1042 Ardco, Inc - ANSI
131 Guardian Industries - ANSI	662 Guardian Fabrication - ANSI	1044 Tempglass Southern, Inc
137 Texas Tempered Glass Co	669 Texas Tempered Glass Co	1045 Tempglass Southern, Inc
185 OPG Industries	675 PPG Industries	1046 Tempglass Southern, Inc
186 OPG Industries	676 PPG Industries	1049 Ardco, Inc - ANSI
188 OPG Industries - ANSI	678 Downey Glass Co - ANSI	1050 OPG Industries
194 PPG Industries	709 Falconer Glass Industries	1058 Tempglass Eastern, Inc
195 PPG Industries	711 Falconer Glass Industries	1059 Tempglass Eastern, Inc
220 AFG Industries	712 Falconer Glass Industries	1062 Hehr Glass Co
249 PPG Industries	805 Downey Glass Co - CPSC	1067 PPG Industries - ANSI
250 PPG Industries	806 Downey Glass Co - CPSC	1073 Spectrum Glass - ANSI
295 PPG Industries	807 Downey Glass Co - CPSC	1074 Spectrum Glass - ANSI
300 Guardian Fabrication - ANSI	808 Downey Glass Co - CPSC	1075 Spectrum Glass - ANSI
320 Tempered Glass, Inc - ANSI	809 Downey Glass Co - CPSC	1076 Spectrum Glass - ANSI
321 Tempered Glass, Inc - ANSI	810 Downey Glass Co - CPSC	1077 Spectrum Glass - ANSI
322 Tempered Glass, Inc - ANSI	811 Downey Glass Co - CPSC	1078 Spectrum Glass - ANSI
323 Tempered Glass, Inc - ANSI	812 Downey Glass Co - CPSC	1079 Spectrum Glass - ANSI
328 OPG Industries - ANSI	813 Downey Glass Co - CPSC	1080 Spectrum Glass - CPSC
337 Tempered Glass Corp	814 Downey Glass Co - CPSC	1081 Spectrum Glass - CPSC
338 Tempered Glass Corp	815 Downey Glass Co - CPSC	1082 Spectrum Glass - CPSC
348 Tempered Glass Corp	817 Downey Glass Co - CPSC	1083 Spectrum Glass - CPSC
382 PPG Industries - ANSI	862 Tempered Glass, Inc - CPSC	1084 Spectrum Glass - CPSC
390 Flex-Temp, Inc - ANSI	863 Tempered Glass, Inc - CPSC	1085 Spectrum Glass - CPSC
391 Flex-Temp, Inc - ANSI	865 Tempered Glass, Inc - CPSC	1086 Spectrum Glass - CPSC
392 Flex-Temp, Inc - ANSI	866 Tempered Glass, Inc - CPSC	1107 Binswanger/ACI Glass - ANSI
400 Binswanger/ACI Glass	872 Flex-Temp, Inc - CPSC	1108 Binswanger/ACI Glass - ANSI
402 Binswanger/ACI Glass	873 Flex-Temp, Inc - CPSC	1110 PPG Industries
458 Guardian Industries - ANSI	874 Flex-Temp, Inc - CPSC	1111 PPG Industries
471 Guardian Fabrication - ANSI	879 Tempered Glass Int'l - CPSC	1112 PPG Industries
482 Tempered Glass Int'l - ANSI	881 Tempered Glass Int'l - CPSC	1113 PPG Industries - ANSI
483 Tempered Glass Int'l - ANSI	882 Tempered Glass Int'l - CPSC	1114 Downey Glass Co - CPSC
487 Guardian Industries - ANSI	933 Guardian Industries - ANSI	1118 Tempered Glass Corp
514 Downey Glass Co - ANSI	934 Guardian Industries - ANSI	1123 Fulton Glass Inds - ANSI
515 Downey Glass Co - ANSI	935 Downey Glass Co - ANSI	1124 Fulton Glass Inds - ANSI
516 Downey Glass Co - ANSI	949 AFG Industries	1125 Fulton Glass Inds - ANSI
520 Anglass Industries - ANSI	955 AFG Industries	1126 Fulton Glass Inds - ANSI
562 OPG Industries - ANSI	968 Guardian Industries - ANSI	1127 Fulton Glass Inds - ANSI
586 The Chamberlain Group	969 Guardian Industries - ANSI	1130 Fulton Glass Inds - CPSC
587 AFG Industries	970 Guardian Industries - ANSI	1131 Fulton Glass Inds - CPSC
592 Tempglass, Inc	971 Guardian Industries - ANSI	1132 Fulton Glass Inds - CPSC

<u>SGCC NO.</u>	<u>SGCC NO.</u>	<u>SGCC NO.</u>
1134 Fulton Glass Inds - CPSC	1303 Guardian Industries - ANSI	1390 AFG Industries
1139 AFG Industries	1304 Guardian Industries - ANSI	1393 Saint Gobain - ANSI
1143 AFG Industries	1308 TRACO (Three Rivers Alum.)	1394 Guardian Fabrication
1157 ACI Glass	1310 TRACO (Three Rivers Alum.)	1395 Tempered Glass Corp
1161 Guardian Industries - ANSI	1311 TRACO (Three Rivers Alum.)	1398 Empire Glass, Inc
1165 Colonial Mirror & Glass	1314 Guardian Industries - ANSI	1399 Empire Glass, Inc
1166 Colonial Mirror & Glass	1315 Falconer-Lewistown - ANSI	1400 Empire Glass, Inc
1167 Colonial Mirror & Glass	1316 Falconer-Lewistown - ANSI	1401 Empire Glass, Inc
1173 Safelite Glass Corp - ANSI	1318 Guardian Industries - ANSI	1402 Empire Glass, Inc
1180 General Glass Corp	1323 Ardco, Inc - ANSI	1403 Viracon, Inc
1181 General Glass Corp	1326 Fulton Glass Inds - ANSI	1404 Viracon, Inc
1182 General Glass Corp	1327 Fulton Glass Inds - CPSC	1405 American Flat Glass Distrib
1192 Texas Tempered Glass Co	1329 Tempered Glass Corp	1406 American Flat Glass Distrib
1200 Hamilton Glass Products	1330 Falconer Glass Industries	1408 Texas Tempered Glass Co
1201 Gemtron Corp - ANSI	1331 Vidrierias de Llodio - CPSC	1413 Hankuk Glass Ind - ANSI
1202 Gemtron Corp - CPSC	1332 Gemtron Corp - ANSI	1414 AFG Industries
1204 Tempered Glass Int'l - ANSI	1333 Gemtron Corp - CPSC	1415 American Flat Glass Distrib
1205 Tempered Glass Int'l - CPSC	1334 Gemtron Corp - ANSI	1416 Nashville Tempered Glass
1212 Fulton Glass Inds - CPSC	1335 Gemtron Corp - CPSC	1417 Nashville Tempered Glass
1216 Guardian Fabrication - ANSI	1336 PPG Industries - ANSI	1420 Tempglass, Inc
1219 Tempglass Southern, Inc	1338 Tempglass Eastern, Inc	1421 Hordis Brothers, Inc.
1225 Binswanger/ACI Glass - ANSI	1340 Glass Tempering Service	1422 Gemtron Corp - ANSI
1226 ACI Glass	1344 Howe-Martzt Glass	1423 Gemtron Corp - CPSC
1230 American Flat Glass Distrib	1355 Guardian Fabrication	1424 Gemtron Corp - ANSI
1231 American Flat Glass Distrib	1356 Guardian Fabrication	1425 Gemtron Corp - CPSC
1232 American Flat Glass Distrib	1357 Guardian Fabrication	1426 Gemtron Corp - ANSI
1235 Guardian Fabrication - ANSI	1358 Guardian Fabrication	1427 Gemtron Corp - CPSC
1238 Glass Tempering Service	1359 Guardian Fabrication	1428 American Flat Glass Distrib
1241 Tempered Glass Int'l - ANSI	1360 Safelite Glass Corp	1429 O & W Glass Ind
1248 Guardian Industries - ANSI	1361 Sunglas Products - ANSI	1436 AFG Industries
1249 Guardian Industries - ANSI	1362 Sunglas Products - ANSI	1437 Flex-Temp, Inc - ANSI
1250 Guardian Industries - ANSI	1363 Sunglas Products - ANSI	1438 Flex-Temp, Inc - CPSC
1251 Guardian Industries - ANSI	1365 Sunglas Products - CPSC	1441 Sumitec, Inc - ANSI
1253 Guardian Industries - ANSI	1366 Sunglas Products - CPSC	1445 Vidrierias de Llodio - CPSC
1259 Tempglass Eastern, Inc	1367 Sunglas Products - CPSC	1448 Hordis Brothers, Inc.
1265 Howe-Martzt Glass	1369 Elgin Precision Glass Co	1452 OPG Industries
1266 Howe-Martzt Glass	1370 Elgin Precision Glass Co	1453 Sunbelt Glass, Inc
1268 Howe-Martzt Glass	1371 Elgin Precision Glass Co	1454 Sunbelt Glass, Inc
1269 Howe-Martzt Glass	1372 Elgin Precision Glass Co	1455 Sunbelt Glass, Inc
1270 Howe-Martzt Glass	1374 Sunglas Products - ANSI	1456 Sunbelt Glass, Inc
1275 Virginia Glass Products	1375 Sunglas Products - CPSC	1457 Sunbelt Glass, Inc
1280 Falconer Glass Industries	1376 The Chamberlain Group	1458 The Glass Factory
1281 OPG Industries	1377 The Chamberlain Group	1459 The Glass Factory
1282 Falconer-Lewistown - ANSI	1378 The Chamberlain Group	1460 The Glass Factory
1284 Falconer-Lewistown - ANSI	1379 Hordis Brothers, Inc.	1461 The Glass Factory
1286 OPG Industries	1380 Hordis Brothers, Inc.	1462 Guardian Industries - ANSI
1287 OPG Industries	1381 Glasstemp, Inc.	1463 Guardian Industries - ANSI
1292 San Jacinto Glass Co	1382 Glasstemp, Inc.	1464 Guardian Industries - ANSI
1293 San Jacinto Glass Co	1383 Glasstemp, Inc.	1465 Lin's Glass Co Ltd
1294 San Jacinto Glass Co	1384 Glasstemp, Inc.	1466 O & W Glass Ind
1295 San Jacinto Glass Co	1385 Hamilton Glass Products	1467 Nashville Tempered Glass
1296 San Jacinto Glass Co	1386 Hamilton Glass Products	1468 Insulpane, Inc
1298 PPG Industries - ANSI	1387 Hamilton Glass Products	1469 Insulpane, Inc
1299 Shaw Glass Co Inc	1388 OPG Industries - ANSI	1470 Insulpane, Inc
1301 Guardian Industries - ANSI	1389 Glass Tempering Service	1471 Insulpane, Inc

<u>SGCC NO.</u>	<u>SGCC NO.</u>	<u>SGCC NO.</u>
1472 Insulpane, Inc	1507 Hehr Glass Co	1542 Good News Glass
1473 Insulpane, Inc	1508 Viracon, Inc	1543 Good News Glass
1474 Tempered Glass, Inc - ANSI	1509 Viracon, Inc	1544 Good News Glass
1475 Tempered Glass, Inc - CPSC	1510 Hehr Glass Co	1545 Falconer Glass Industries
1476 Viracon, Inc	1511 Air Seal IG Units Co	1546 Floral Glass & Mirror
1477 Gemtron Corp - ANSI	1512 Air Seal IG Units Co	1547 Floral Glass & Mirror
1478 Gemtron Corp - CPSC	1513 Air Seal IG Units Co	1548 Floral Glass & Mirror
1479 Hankuk Glass Ind - ANSI	1514 Hehr Glass Co	1549 Floral Glass & Mirror
1480 Hankuk Glass Ind - ANSI	1515 Guardian Industries	1550 Floral Glass & Mirror
1481 Hankuk Glass Ind - ANSI	1516 Hehr Glass Co	1551 Floral Glass & Mirror
1482 Hankuk Glass Ind - ANSI	1517 Hehr Glass Co	1552 Floral Glass & Mirror
1483 Hankuk Glass Ind - ANSI	1518 American Flat Glass Distrib	1553 Floral Glass & Mirror
1484 Shaw Glass Co Inc	1519 American Flat Glass Distrib	1554 Perma*View Processed Glass
1485 AFG Glass Inc	1520 American Flat Glass Distrib	1555 Swift Glass Co., Inc.
1486 AFG Glass Inc	1521 American Flat Glass Distrib	1556 Swift Glass Co., Inc.
1487 AFG Glass Inc	1522 American Flat Glass Distrib	1557 Swift Glass Co., Inc.
1488 AFG Glass Inc	1523 American Flat Glass Distrib	1558 Swift Glass Co., Inc.
1489 AFG Glass Inc	1524 American Flat Glass Distrib	1559 Swift Glass Co., Inc.
1490 AFG Glass Inc	1525 Bogardus Wilson Ltd.	1561 Good News Glass
1491 AFG Glass Inc	1526 Arch Tempered Glass - ANSI	1562 Arch Tempered Glass - ANSI
1492 Hehr Glass Co	1527 Arch Tempered Glass - ANSI	1563 Ardco, Inc
1493 Hehr Glass Co	1528 Arch Tempered Glass - ANSI	1564 Ardco, Inc
1494 Havlin Witkin Corp	1529 Arch Tempered Glass - ANSI	1565 Ardco, Inc
1495 Havlin Witkin Corp	1530 Arch Tempered Glass - ANSI	1566 GMG Industries, Inc.
1496 Havlin Witkin Corp	1531 Arch Tempered Glass - ANSI	1567 GMG Industries, Inc.
1497 Havlin Witkin Corp	1532 Arch Tempered Glass - ANSI	1568 GMG Industries, Inc.
1498 Havlin Witkin Corp	1533 Glasstemp, Inc.	1569 Alumiglass, Inc. - ANSI
1499 Geneva Glass Industries	1534 Glasstemp, Inc.	1570 Alumiglass, Inc. - ANSI
1500 Geneva Glass Industries	1535 ACI Glass	1571 Viracon + Insolair
1501 Geneva Glass Industries	1536 Glasstemp, Inc.	1572 Viracon + Insolair
1502 Geneva Glass Industries	1537 Flex-Temp, Inc - ANSI	1573 Good News Glass
1503 Geneva Glass Industries	1538 Flex-Temp, Inc - CPSC	1578 Milgard Tempering Inc
1504 Geneva Glass Industries	1539 Good News Glass	
1505 Perma*View Processed Glass	1540 Good News Glass	
1506 Perma*View Processed Glass	1541 Good News Glass	

SGCC NO.	INCH	(MM)	TYPE	MAX. SIZE CERTIFIED	SGCC NO.	INCH	(MM)	TYPE	MAX. SIZE CERTIFIED
<b>ACI GLASS PRODUCTS, INC.; SANTA FE SPRINGS, CA</b>					<b>ANGLASS INDUSTRIES, INC.; SAN FERNANDO, CA (CON'T)</b>				
1157	3/16	( 5.0)	TTG	U	999	3/16	( 5.0)	TTG	U
1535	1/4	( 6.0)	TTG	U	1000	1/4	( 6.0)	TTG	U
639	3/8	(10.0)	TTG	U	<b>ARCH TEMPERED GLASS PRODUCTS; ORLANDO, FL</b>				
640	1/2	(12.0)	TTG	U	<b>ANSI ONLY</b>				
1226	1/8	( 3.2)	TPG(S)	U	1526	1/8	( 3.0)	TTG	U
<b>AFG INDUSTRIES, INC.; BRIDGEPORT, WV</b>					1527	3/16	( 5.0)	TTG	U
1436	1/8	( 3.0)	TTG	U	1528	1/4	( 6.0)	TTG	U
<b>AFG INDUSTRIES, INC.; GREENLAND, TN</b>					1529	3/8	(10.0)	TTG	U
598	1/8	( 3.0)	TTG	U	1530	1/2	(12.0)	TTG	U
955	5/32	( 4.0)	TTG	U	1531	1/8	( 3.0)	TPG	U
220	3/16	( 5.0)	TTG	U	1532	5/32	( 4.0)	TPG	U
89	1/4	( 6.0)	TTG	U	1562	3/16	( 5.0)	TPG(S)	U
90	3/8	(10.0)	TTG	U	<b>ARDCO, INC; CHICAGO, IL</b>				
587	1/8	( 3.2)	TPG(S)	U	<b>ANSI ONLY</b>				
1139	3/16	( 4.8)	TPG(S)	U	1041	1/8	( 3.0)	TTG	U
<b>AFG INDUSTRIES, INC.; KINGSPORT, TN</b>					1323	5/32	( 4.0)	TTG	U
1390	1/8	( 3.0)	TTG	U	1042	3/16	( 5.0)	TTG	U
949	5/32	( 4.0)	TTG	U	1049	1/4	( 6.0)	TTG	U
28	3/16	( 5.0)	TTG	U	<b>ARDCO, INC; CHICAGO, IL</b>				
24	1/4	( 6.0)	TTG	U	1563	5/32	( 4.0)	TBG	U
1143	3/16	( 4.8)	TPG(S)	U	1564	3/16	( 5.0)	TBG	U
1414	1/8	( 3.2)	TPG(M)	U	1565	1/4	( 6.0)	TBG	U
<b>AFG GLASS, INC.; CONCORD, ONTARIO, CANADA</b>					<b>BINSWANGER/ACI GLASS; DALLAS, TX</b>				
1485	1/8	( 3.0)	TTG	U	<b>ANSI ONLY</b>				
1486	5/32	( 4.0)	TTG	U	1107	3/8	(10.0)	TTG	U
1487	3/16	( 5.0)	TTG	U	1108	1/2	(12.0)	TTG	U
1488	7/32	( 5.6)	TTG	U	1225	3/4	(19.0)	TTG	U
1489	1/4	( 6.0)	TTG	U	<b>BINSWANGER/ACI GLASS; DALLAS, TX</b>				
1490	3/8	(10.0)	TTG	U	400	3/16	( 5.0)	TTG	U
1491	1/2	(12.0)	TTG	U	402	1/4	( 6.0)	TTG	U
<b>AIR SEAL INSULATING GLASS UNITS CO; GLOUCESTER CITY, NJ</b>					<b>BOGARDUS WILSON LTD.; WINNIPEG, MANITOBA, CANADA</b>				
1511	1/8	( 3.0)	OCG	U	1525	1/2	(12.0)	TTG	U
1512	3/16	( 5.0)	OCG	U	<b>THE CHAMBERLAIN GROUP, INC.; MALVERN, AR</b>				
1513	1/4	( 6.0)	OCG	U	586	1/8	( 3.0)	TTG	U
<b>ALUMIGLASS, INC.; BOCA RATON, FL</b>					1376	5/32	( 4.0)	TTG	U
<b>ANSI ONLY</b>					1377	3/16	( 5.0)	TTG	U
1569	1/4	( 6.0)	LTG( .030)	U	1378	1/4	( 6.0)	TTG	U
1570	1/2	(12.0)	LTG( .038)	U	<b>COLONIAL MIRROR AND GLASS CORP.; BROOKLYN, NY</b>				
<b>AMERICAN FLAT GLASS DISTRIBUTORS; FALL RIVER, MA</b>					1165	1/4	( 6.0)	TTG	U
1518	1/8	( 3.0)	TTG	U	1166	3/8	(10.0)	TTG	U
1519	3/16	( 5.0)	TTG	U	1167	1/2	(12.0)	TTG	U
1520	1/4	( 6.0)	TTG	U	<b>DOWNEY GLASS COMPANY; DOWNEY, CA</b>				
1521	3/8	(10.0)	TTG	U	<b>ANSI ONLY</b>				
1522	1/2	(12.0)	TTG	U	603	1/8	( 3.0)	TTG	U
1524	5/32	( 4.0)	TPG	U	1002	5/32	( 4.0)	TTG	U
1523	3/16	( 4.8)	TPG	U	606	3/16	( 5.0)	TTG	U
<b>AMERICAN FLAT GLASS DISTRIBUTORS; MARIETTA, GA</b>					609	1/4	( 6.0)	TTG	U
1405	1/8	( 3.0)	TTG	U	604	1/8	( 3.2)	TPG(S)	U
1230	3/16	( 5.0)	TTG	U	607	3/16	( 4.8)	TPG(S)	U
1231	1/4	( 6.0)	TTG	U	608	7/32	( 5.6)	TPG(S)	U
1232	3/8	(10.0)	TTG	U	605	1/8	( 3.2)	TPG(M)	U
1406	1/2	(12.0)	TTG	U	<b>DOWNEY GLASS COMPANY; DOWNEY, CA</b>				
1428	5/32	( 4.0)	TPG(S)	U	<b>CPSC ONLY</b>				
1415	3/16	( 4.8)	TPG(S)	U	805	1/8	( 3.0)	TTG	U
<b>ANGLASS INDUSTRIES, INC.; SAN FERNANDO, CA</b>					1003	5/32	( 4.0)	TTG	U
<b>ANSI ONLY</b>					806	3/16	( 5.0)	TTG	U
520	1/8	( 3.0)	TTG	U	807	1/4	( 6.0)	TTG	U

SGCC NO.	INCH	(MM)	TYPE	MAX. SIZE CERTIFIED	SGCC NO.	INCH	(MM)	TYPE	MAX. SIZE CERTIFIED
DOWNEY GLASS COMPANY; DOWNEY, CA (CON'T)					FLEX-TEMP, INC.; IRVING, TX (CON'T)				
808	1/8	( 3.2)	TPG(S)	U	873	3/8	(10.0)	TTG	U
810	3/16	( 4.8)	TPG(S)	U	874	1/2	(12.0)	TTG	U
811	7/32	( 5.6)	TPG(S)	U	1538	3/16	( 4.8)	TPG	U
809	1/8	( 3.2)	TPG(M)	U	FLORAL GLASS & MIRROR, INC.; HAUPPAUGE, NY				
DOWNEY GLASS COMPANY; LOS ANGELES, CA					1546	1/8	( 3.0)	TTG	U
				ANSI ONLY	1547	3/16	( 5.0)	TTG	U
630	3/16	( 5.0)	TTG	U	1548	1/4	( 6.0)	TTG	U
514	1/4	( 6.0)	TTG	U	1549	3/8	(10.0)	TTG	U
515	3/8	(10.0)	TTG	U	1550	1/2	(12.0)	TTG	U
516	1/2	(12.0)	TTG	U	1551	3/4	(19.0)	TTG	U
935	3/16	( 4.8)	TPG(S)	U	1552	1/8	( 3.2)	TPG	U
678	7/32	( 5.6)	TPG(S)	U	1553	7/32	( 5.6)	TPG	U
DOWNEY GLASS COMPANY; LOS ANGELES, CA					FULTON GLASS INDUSTRIES, INC.; RED OAK, GA				
				CPSC ONLY	ANSI ONLY				
812	3/16	( 5.0)	TTG	U	1123	5/32	( 4.0)	TTG	U
813	1/4	( 6.0)	TTG	U	1124	3/16	( 5.0)	TTG	U
814	3/8	(10.0)	TTG	U	1125	1/4	( 6.0)	TTG	U
815	1/2	(12.0)	TTG	U	1126	3/8	(10.0)	TTG	U
1114	3/16	( 4.8)	TPG(S)	U	1127	1/2	(12.0)	TTG	U
817	7/32	( 5.6)	TPG(S)	U	1326	3/16	( 4.8)	TPG(S)	U
ELGIN PRECISION GLASS COMPANY, INC; ELGIN, IL					FULTON GLASS INDUSTRIES, INC.; RED OAK, GA				
1369	1/8	( 3.0)	TTG	U					CPSC ONLY
1370	5/32	( 4.0)	TTG	U	1130	5/32	( 4.0)	TTG	U
1371	3/16	( 5.0)	TTG	U	1131	3/16	( 5.0)	TTG	U
1372	1/4	( 6.0)	TTG	U	1132	1/4	( 6.0)	TTG	U
EMPIRE GLASS, INC.; BRONX, NY					1212	3/8	(10.0)	TTG	U
1398	3/16	( 5.0)	TTG	U	1134	1/2	(12.0)	TTG	U
1399	1/4	( 6.0)	TTG	U	1327	3/16	( 4.8)	TPG(S)	U
1400	3/8	(10.0)	TTG	U	GEMTRON CORPORATION; SWEETWATER, TN				
1401	1/2	(12.0)	TTG	U					ANSI ONLY
1402	3/4	(19.0)	TTG	U	1334	1/8	( 3.0)	TTG	U
FALCONER GLASS INDUSTRIES, INC.; FALCONER, NY					1332	5/32	( 4.0)	TTG	U
1545	3/16	( 5.0)	TTG	U	1426	.169	( 4.3)	TTG	U
709	1/4	( 6.0)	TTG	U	1201	3/16	( 5.0)	TTG	U
1280	3/8	(10.0)	TTG	U	1477	1/4	( 6.0)	TTG	U
711	1/2	(12.0)	TTG	U	1422	1/8	( 3.2)	TPG(S)	U
712	3/4	(19.0)	TTG	U	1424	5/32	( 4.0)	TPG(S)	U
1330	3/16	( 4.8)	TPG(S)	U	GEMTRON CORPORATION; SWEETWATER, TN				
FALCONER-LEWISTOWN, INC.; LEWISTOWN, PA									CPSC ONLY
				ANSI ONLY	1335	1/8	( 3.0)	TTG	U
1282	7/32	( 5.5)	LTG( .015)	U	1333	5/32	( 4.0)	TTG	U
1284	1/4	( 6.0)	LTG( .015)	U	1427	.169	( 4.3)	TTG	U
1315	3/8	(10.0)	LTG( .015)	U	1202	3/16	( 5.0)	TTG	U
1316	1/2	(12.0)	LTG( .015)	U	1478	1/4	( 6.0)	TTG	U
FLEX-O-GLASS, INC.; DIXON, IN					1423	1/8	( 3.0)	TPG(S)	U
118	0.080 inch through 0.125 inch smooth extruded acrylic			U	1425	5/32	( 4.0)	TPG(S)	U
FLEX-TEMP, INC.; IRVING, TX					GENERAL GLASS CORPORATION; DENVER, CO				
				ANSI ONLY	1180	5/32	( 4.0)	TTG	U
1437	3/16	( 5.0)	TTG	U	1181	3/16	( 5.0)	TTG	U
390	1/4	( 6.0)	TTG	U	1182	1/4	( 6.0)	TTG	U
391	3/8	(10.0)	TTG	U	GENEVA GLASS INDUSTRIES; GENEVA, IL				
392	1/2	(12.0)	TTG	U	1499	1/8	( 3.0)	TTG	U
1537	3/16	( 4.8)	TPG	U	1502	5/32	( 4.0)	TTG	U
FLEX-TEMP, INC.; IRVING, TX					1500	3/16	( 5.0)	TTG	U
				CPSC ONLY	1501	1/4	( 6.0)	TTG	U
1438	3/16	( 5.0)	TTG	U	1503	3/8	(10.0)	TTG	U
872	1/4	( 6.0)	TTG	U	1504	1/2	(12.0)	TTG	U
THE GLASS FACTORY, INC.; RONKONKOMA, NY									
					1458	1/8	( 3.0)	TTG	U



SGCC NO.	INCH	(MM)	TYPE	MAX. SIZE CERTIFIED	SGCC NO.	INCH	(MM)	TYPE	MAX. SIZE CERTIFIED
<b>THE GLASS FACTORY, INC.; RONKONKOMA, NY (CON'T)</b>					<b>GUARDIAN INDUSTRIES CORP.; FORT LAUDERDALE, FL</b>				
1459	3/16	( 5.0)	TTG	U	<b>ANSI ONLY</b>				
1460	1/4	( 6.0)	TTG	U	1161	1/8	( 3.0)	TTG	U
1461	1/2	(12.0)	TTG	U	633	3/16	( 5.0)	TTG	U
<b>GLASS TEMPERING SERVICE, INC.; DETROIT, MI</b>					40	1/4	( 6.0)	TTG	U
1389	1/8	( 3.0)	TTG	30" by 76"	41	3/8	(10.0)	TTG	U
1238	1/4	( 6.0)	TTG	U	1004	1/2	(12.0)	TTG	U
1340	3/16	( 4.8)	TPG(S)	34" by 72"	1318	3/16	( 4.8)	TPG(S)	U
<b>GLASSTEMP, INC.; BENSENVILLE, IL</b>					<b>GUARDIAN INDUSTRIES CORP.; KINGSBURG, CA</b>				
1534	1/8	( 3.0)	TTG	U	<b>ANSI ONLY</b>				
1381	3/16	( 5.0)	TTG	U	968	1/8	( 3.0)	TTG	U
1382	1/4	( 6.0)	TTG	U	969	5/32	( 4.0)	TTG	U
1383	3/8	(10.0)	TTG	U	970	3/16	( 5.0)	TTG	U
1384	1/2	(12.0)	TTG	U	971	1/4	( 6.0)	TTG	U
1536	3/8	(10.0)	TBG	U	1303	1/8	( 3.2)	TPG(S)	U
1533	1/2	(12.0)	TBG	U	1304	3/16	( 4.8)	TPG(S)	U
<b>GMG INDUSTRIES, INC.; CASSOPOLIS, MI</b>					1301	5/32	( 4.0)	TPG(M)	U
1566	1/8	( 3.0)	TTG	U	<b>GUARDIAN INDUSTRIES CORP.; UPPER SANDUSKY, OH</b>				
1567	3/16	( 5.0)	TTG	U	<b>ANSI ONLY</b>				
1568	1/4	( 6.0)	TTG	U	458	7/32	( 5.5)	LTG( .030)	U
<b>GOOD NEWS GLASS; SPRINGFIELD, MA</b>					487	1/4	( 6.0)	LTG( .030)	U
1539	1/8	( 3.0)	TTG	U	<b>GUARDIAN INDUSTRIES CORP.; UPPER SANDUSKY, OH</b>				
1540	5/32	( 4.0)	TTG	U	1515	3/16	( 5.0)	LTG( .030)	U
1541	3/16	( 5.0)	TTG	U	<b>GUARDIAN INDUSTRIES CORP.; TILLSONBURG, ONTARIO, CANADA</b>				
1542	1/4	( 6.0)	TTG	U	<b>ANSI ONLY</b>				
1573	3/8	(10.0)	TTG	U	1462	1/8	( 3.0)	TTG	U
1561	5/32	( 4.0)	TPG	U	<b>HAMILTON GLASS PRODUCTS, INC.; VINCENNES, IN</b>				
1543	1/8	( 3.2)	TPG(S)	U	54	1/8	( 3.0)	TTG	U
1544	3/16	( 4.8)	TPG(S)	U	1385	5/32	( 4.0)	TTG	U
<b>GUARDIAN FABRICATION, INC.; ROGERS, AR</b>					1200	3/16	( 5.0)	TTG	U
1355	1/8	( 3.0)	TTG	U	57	1/4	( 6.0)	TTG	U
1356	3/16	( 5.0)	TTG	U	1386	5/32	( 4.0)	TPG(S)	U
1357	1/4	( 6.0)	TTG	U	1387	3/16	( 4.8)	TPG(S)	U
1358	1/8	( 3.2)	TPG(S)	U	<b>HANKUK GLASS INDUSTRY, LTD.; SEOUL, KOREA</b>				
1359	5/32	( 4.0)	TPG(S)	U	<b>ANSI ONLY</b>				
1394	3/16	( 4.8)	TPG(D)	U	1479	5/32	( 4.0)	TTG	U
<b>GUARDIAN FABRICATION, INC.; WEBSTER, MA</b>					1480	3/16	( 5.0)	TTG	U
<b>ANSI ONLY</b>					1413	1/4	( 6.0)	TTG	U
300	1/8	( 3.0)	TTG	U	1481	5/16	( 8.0)	TTG	U
1216	3/16	( 5.0)	TTG	U	1482	3/8	(10.0)	TTG	U
662	1/4	( 6.0)	TTG	U	1483	1/2	(12.0)	TTG	U
471	3/8	(10.0)	TTG	U	<b>HAVLIN WITKIN CORPORATION; SANTA CLARA, CA</b>				
1235	1/2	(12.0)	TTG	U	1494	3/16	( 5.0)	TTG	U
<b>GUARDIAN INDUSTRIES CORP.; CARLETON, MI</b>					1496	1/4	( 6.0)	TTG	U
<b>ANSI ONLY</b>					1497	3/8	(10.0)	TTG	U
933	1/8	( 3.0)	TTG	U	1498	1/2	(12.0)	TTG	U
934	5/32	( 4.0)	TTG	U	1495	7/32	( 5.6)	TPG(S)	U
631	3/16	( 5.0)	TTG	U	<b>HEHR GLASS COMPANY; NEWTON, KS</b>				
131	1/4	( 6.0)	TTG	U	1492	1/8	( 3.0)	TTG	U
<b>GUARDIAN INDUSTRIES CORP.; CORSICANA, TX</b>					1493	3/16	( 5.0)	TTG	U
<b>ANSI ONLY</b>					1516	1/4	( 6.0)	TTG	U
1248	1/8	( 3.0)	TTG	U	1507	5/32	( 4.0)	TPG(S)	U
1249	5/32	( 4.0)	TTG	U	<b>HEHR GLASS COMPANY; CHESANING, MI</b>				
1250	3/16	( 5.0)	TTG	U	1062	1/8	( 3.0)	TTG	U
1251	1/4	( 6.0)	TTG	U	1510	3/16	( 5.0)	TTG	32" by 60"
1253	3/8	(10.0)	TTG	U	1517	1/4	( 6.0)	TTG	U
1463	1/8	( 3.2)	TPG(S)	U	1514	1/8	( 3.0)	TPG	32" by 60"
1314	5/32	( 4.0)	TPG(S)	U					
1464	7/32	( 5.6)	TPG(S)	U					

SGCC NO.	INCH	(MM)	TYPE	MAX. SIZE CERTIFIED	SGCC NO.	INCH	(MM)	TYPE	MAX. SIZE CERTIFIED
<b>HORDIS BROTHERS, INC.; WARRENTON, MO</b>					<b>PPG INDUSTRIES, INC.; CARLISLE, PA</b>				
1379	1/8	( 3.0)	TTG	U	250	1/8	( 3.0)	TTG	U
1380	5/32	( 4.0)	TTG	U	675	5/32	( 4.0)	TTG	U
1421	3/16	( 5.0)	TTG	U	249	3/16	( 5.0)	TTG	U
1448	1/4	( 6.0)	TTG	U	<b>PPG INDUSTRIES, INC.; FORD CITY, PA</b>				
<b>HOWE-MARTZ GLASS COMPANY; DETROIT, MI</b>					70	1/4	( 6.0)	TTG	U
1265	5/32	( 4.0)	TTG	U	<b>PPG INDUSTRIES, INC.; FRESNO, CA</b>				
1266	3/16	( 5.0)	TTG	U	295	1/8	( 3.0)	TTG	U
1268	1/4	( 6.0)	TTG	U	676	5/32	( 4.0)	TTG	U
1269	3/8	(10.0)	TTG	U	64	3/16	( 5.0)	TTG	U
1270	1/2	(12.0)	TTG	U	<b>PPG INDUSTRIES, INC.; MIAMI, FL</b>				
1344	3/16	( 4.8)	TPG(S)	U	<b>ANSI ONLY</b>				
<b>INSULPANE, INC.; NEW WINDSOR, NY</b>					1067	3/8	(10.0)	TTG	U
1468	1/8	( 3.0)	TTG	U	1336	1/2	(12.0)	TTG	U
1469	3/16	( 5.0)	TTG	U	1298	3/16	( 4.8)	TPG(S)	U
1470	1/4	( 6.0)	TTG	U	<b>PPG INDUSTRIES, INC.; MIAMI, FL</b>				
1471	3/8	(10.0)	TTG	U	195	3/16	( 5.0)	TTG	U
1472	1/2	(12.0)	TTG	U	194	1/4	( 6.0)	TTG	U
1473	7/32	( 5.6)	TPG(S)	U	<b>PPG INDUSTRIES, INC.; WICHITA FALLS, TX</b>				
<b>LIN'S GLASS COMPANY, LTD.; TAIWAN, R.O.C.</b>					<b>ANSI ONLY</b>				
1465	1/8	( 3.0)	TTG	20" by 36"	1113	1/4	( 6.0)	TTG	U
<b>MILGARD TEMPERING, INC.; TACOMA, WA</b>					<b>PPG INDUSTRIES, INC.; WICHITA FALLS, TX</b>				
1578	1/4	( 6.0)	TTG	U	1110	1/8	( 3.0)	TTG	U
<b>NASHVILLE TEMPERED GLASS CORP.; NASHVILLE, TN</b>					1111	5/32	( 4.0)	TTG	U
1416	1/8	( 3.0)	TTG	U	1112	3/16	( 5.0)	TTG	U
1467	3/16	( 5.0)	TTG	U	<b>SAFELITE GLASS CORPORATION; WICHITA, KS</b>				
1417	1/4	( 6.0)	TTG	U	<b>ANSI ONLY</b>				
<b>O &amp; W GLASS INDUSTRIES, INC.; EVERETT, WA</b>					1173	7/32	( 5.5)	LTG( .015)	U
1429	1/8	( 3.0)	TTG	U	<b>SAFELITE GLASS CORPORATION; WICHITA, KS</b>				
1466	5/32	( 4.0)	TTG	U	1360	3/16	( 5.0)	LTG( .030)	U
<b>OPG INDUSTRIES, INC.; JEFFERSON, TX</b>					<b>SAINT GOBAIN; THE NETHERLANDS</b>				
<b>ANSI ONLY</b>					<b>ANSI ONLY</b>				
1388	1/8	( 3.2)	TPG(M)	U	1393	1/4	( 6.0)	TTG	U
<b>OPG INDUSTRIES, INC.; JEFFERSON, TX</b>					<b>SAN JACINTO GLASS CO.; HOUSTON, TX</b>				
1281	1/8	( 3.0)	TTG	U	1292	1/8	( 3.0)	TTG	U
1286	3/16	( 5.0)	TTG	U	1293	3/16	( 5.0)	TTG	U
1287	1/4	( 6.0)	TTG	U	1294	1/4	( 6.0)	TTG	U
<b>OPG INDUSTRIES, INC.; LEWISBURG, OH</b>					1295	3/8	(10.0)	TTG	U
<b>ANSI ONLY</b>					1296	1/2	(12.0)	TTG	U
188	3/16	( 4.8)	TPG(S)	U	<b>SHAW GLASS COMPANY, INC.; SOUTH EASTON, MA</b>				
562	7/32	( 5.6)	TPG(S)	U	1484	1/8	( 3.0)	TTG	U
654	1/8	( 3.2)	TPG(M)	U	1034	3/16	( 5.0)	TTG	U
328	3/16	( 4.8)	TPG(D)	U	1035	1/4	( 6.0)	TTG	U
<b>OPG INDUSTRIES, INC.; LEWISBURG, OH</b>					1036	3/8	(10.0)	TTG	U
1050	1/8	( 3.0)	TTG	U	1037	1/2	(12.0)	TTG	U
1452	5/32	( 4.0)	TTG	U	1299	3/16	( 4.8)	TPG(S)	U
185	3/16	( 5.0)	TTG	U	<b>SPECTRUM GLASS PRODUCTS; CLINTON, NC</b>				
186	1/4	( 6.0)	TTG	U	<b>ANSI ONLY</b>				
<b>PERMA*VIEW PROCESSED GLASS; CLARKSVILLE, TN</b>					1073	3/16	( 5.0)	TTG	U
1505	1/8	( 3.0)	TTG	U	1074	1/4	( 6.0)	TTG	U
1506	3/16	( 5.0)	TTG	U	1075	5/16	( 8.0)	TTG	U
1554	1/4	( 6.0)	TTG	U	1076	3/8	(10.0)	TTG	U
<b>PPG INDUSTRIES, INC.; CARLISLE, PA</b>					1077	1/2	(12.0)	TTG	U
<b>ANSI ONLY</b>					1078	5/8	(16.0)	TTG	U
382	1/4	( 6.0)	TTG	U	1079	3/4	(19.0)	TTG	U

SGCC NO.	INCH	(MM)	TYPE	MAX. SIZE CERTIFIED	SGCC NO.	INCH	(MM)	TYPE	MAX. SIZE CERTIFIED
<b>SPECTRUM GLASS PRODUCTS; CLINTON, NC</b>					<b>TEMPERED GLASS INTERNATIONAL, INC.; UNION CITY, CA</b>				
				<b>CPSC ONLY</b>					<b>ANSI ONLY</b>
1080	3/16	( 5.0)	TTG	U	1241	3/16	( 5.0)	TTG	U
1081	1/4	( 6.0)	TTG	U	1204	1/4	( 6.0)	TTG	U
1082	5/16	( 8.0)	TTG	U	482	3/8	(10.0)	TTG	U
1083	3/8	(10.0)	TTG	U	483	1/2	(12.0)	TTG	U
1084	1/2	(12.0)	TTG	U	<b>TEMPERED GLASS INTERNATIONAL, INC.; UNION CITY, CA</b>				
1085	5/8	(16.0)	TTG	U					<b>CPSC ONLY</b>
1086	3/4	(19.0)	TTG	U	879	3/16	( 5.0)	TTG	U
<b>SUMITEC, INC.; BENTON HARBOR, MI</b>					1205	1/4	( 6.0)	TTG	U
				<b>ANSI ONLY</b>	881	3/8	(10.0)	TTG	U
1441	7/32	( 5.6)	LTG	U	882	1/2	(12.0)	TTG	U
<b>SUNBELT GLASS, INC.; TULSA, OK</b>					<b>TEMPGLASS, INC.; PERRYSBURG, OH</b>				
1453	1/8	( 3.0)	TTG	U	1039	1/8	( 3.0)	TTG	U
1454	3/16	( 5.0)	TTG	U	592	3/16	( 5.0)	TTG	U
1455	1/4	( 6.0)	TTG	U	1420	1/4	( 6.0)	TTG	U
1456	3/8	(10.0)	TTG	U	594	3/8	(10.0)	TTG	U
1457	1/2	(12.0)	TTG	U	595	1/2	(12.0)	TTG	U
<b>SUNGLAS PRODUCTS, INC.; CLAREMORE, OK</b>					<b>TEMPGLASS EASTERN, INC.; NORCROSS, GA</b>				
				<b>ANSI ONLY</b>	979	1/8	( 3.0)	TTG	U
1361	5/32	( 4.0)	TTG	U	1259	5/32	( 4.0)	TTG	U
1362	3/16	( 5.0)	TTG	U	981	3/16	( 5.0)	TTG	U
1363	1/4	( 6.0)	TTG	U	982	1/4	( 6.0)	TTG	U
1374	3/8	(10.0)	TTG	U	1058	3/8	(10.0)	TTG	U
<b>SUNGLAS PRODUCTS, INC.; CLAREMORE, OK</b>					1059	1/2	(12.0)	TTG	U
				<b>CPSC ONLY</b>	1338	3/16	( 4.8)	TPG(S)	U
1365	5/32	( 4.0)	TTG	U	<b>TEMPGLASS SOUTHERN, INC.; GRAND PRAIRIE, TX</b>				
1366	3/16	( 5.0)	TTG	U	1219	3/16	( 5.0)	TTG	U
1367	1/4	( 6.0)	TTG	U	1044	1/4	( 6.0)	TTG	U
1375	3/8	(10.0)	TTG	U	1045	3/8	(10.0)	TTG	U
<b>SWIFT GLASS COMPANY, INC.; ELMIRA HEIGHTS, NY</b>					1046	1/2	(12.0)	TTG	U
1555	1/8	( 3.0)	TTG	U	<b>TEXAS TEMPERED GLASS COMPANY; HOUSTON, TX</b>				
1556	3/16	( 5.0)	TTG	U	1192	3/16	( 5.0)	TTG	U
1557	1/4	( 6.0)	TTG	U	137	1/4	( 6.0)	TTG	U
1558	3/8	(10.0)	TTG	U	1408	3/8	(10.0)	TTG	U
1559	1/2	(12.0)	TTG	U	669	1/2	(12.0)	TTG	U
<b>TEMP-TECH INDUSTRIES, INC.; CHICAGO, IL</b>					<b>TRACO (THREE RIVERS ALUM.); WARRENDALE, PA</b>				
986	1/4	( 6.0)	TTG	U	1308	1/8	( 3.0)	TTG	U
<b>TEMPERED GLASS CORPORATION; TAMPA, FL</b>					1310	3/16	( 5.0)	TTG	U
1395	3/16	( 5.0)	TTG	U	1311	1/4	( 6.0)	TTG	U
337	1/4	( 6.0)	TTG	U	<b>VIDRIERIAS DE LLODIO, S.A.; ALAVA, SPAIN</b>				
348	3/8	(10.0)	TTG	U					<b>CPSC ONLY</b>
338	1/2	(12.0)	TTG	U	1445	3/16	( 5.0)	TTG	U
1329	3/16	( 4.8)	TPG(S)	U	1331	5/32	( 4.0)	TPG(S)	U
1118	7/32	( 5.6)	TPG(S)	U	<b>VIRACON, INC.; OWATONNA, MN</b>				
<b>TEMPERED GLASS, INC.; AUSTELL, GA</b>					1476	1/8	( 3.0)	TTG	U
				<b>ANSI ONLY</b>	1403	3/16	( 5.0)	TTG	U
1474	5/32	( 4.0)	TTG	U	1404	1/4	( 6.0)	TTG	U
320	3/16	( 5.0)	TTG	U	1508	3/8	(10.0)	TTG	U
321	1/4	( 6.0)	TTG	U	1509	1/2	(12.0)	TTG	U
322	3/8	(10.0)	TTG	U	<b>VIRACON + INSOLAIR; VACAVILLE, CA</b>				
323	1/2	(12.0)	TTG	U	1571	3/16	( 5.0)	TTG	U
<b>TEMPERED GLASS, INC.; AUSTELL, GA</b>					1572	1/4	( 6.0)	TTG	U
				<b>CPSC ONLY</b>	<b>VIRGINIA GLASS PRODUCTS CORP.; MARTINSVILLE, VA</b>				
1475	5/32	( 4.0)	TTG	U	12	3/16	( 5.0)	TTG	U
862	3/16	( 5.0)	TTG	U	14	1/4	( 6.0)	TTG	U
863	1/4	( 6.0)	TTG	U	93	3/8	(10.0)	TTG	U
865	3/8	(10.0)	TTG	U	94	1/2	(12.0)	TTG	U
866	1/2	(12.0)	TTG	U					

SGCC NO.	INCH	(MM)	TYPE	MAX. SIZE CERTIFIED	
VIRGINIA GLASS PRODUCTS CORP.; MARTINSVILLE, VA (CONT)					
95	3/4	(19.0)	TTG	U	
1275	3/16	(4.8)	TPG(S)	U	
CERTIFIED PRODUCTS KEY					
TTG = TEMPERED TRANSPARENT GLASS					
TPG = TEMPERED PATTERNED GLASS					
TBG = TEMPERED BENT GLASS					
LTG = LAMINATED TRANSPARENT GLASS					
LPG = LAMINATED PATTERNED GLASS					
OCG = ORGANIC COATED GLASS					
(S) = SHALLOW PATTERN					
(M) = MEDIUM PATTERN					
(D) = DEEP PATTERN					
U = UNLIMITED SIZE					

	<u>SGCC NO.</u>		<u>MAX. SIZE CERTIFIED</u>
<b>TEMPERED TRANSPARENT GLASS</b>			
<b>1/8 inch tempered transparent glass</b>			
AFG Industries; Bridgeport, WV	1436		U
AFG Industries; Greenland, TN	598		U
AFG Industries; Kingsport, TN	1390		U
AFG Glass Inc; Concord, Ontario, Canada	1485		U
American Flat Glass Distrib; Fall River, MA	1518		U
American Flat Glass Distrib; Marietta, GA	1405		U
Anglass Industries; San Fernando, CA	520	ANSI ONLY	U
Arch Tempered Glass; Orlando, FL	1526	ANSI ONLY	U
Ardco, Inc; Chicago, IL	1041	ANSI ONLY	U
The Chamberlain Group; Malvern, AR	586		U
Downey Glass Co; Downey, CA	603	ANSI ONLY	U
Downey Glass Co; Downey, CA	805	CPSC ONLY	U
Elgin Precision Glass Co; Elgin, IL	1369		U
Floral Glass & Mirror; Hauppauge, NY	1546		U
Gemtron Corp; Sweetwater, TN	1334	ANSI ONLY	U
Gemtron Corp; Sweetwater, TN	1335	CPSC ONLY	U
Geneva Glass Industries; Geneva, IL	1499		U
The Glass Factory; Ronkonkoma, NY	1458		U
Glass Tempering Service; Detroit, MI	1389		30" by 76"
Glasstemp, Inc.; Bensenville, IL	1534		U
GMG Industries, Inc.; Cassopolis, MI	1566		U
Good News Glass; Springfield, MA	1539		U
Guardian Fabrication; Rogers, AR	1355		U
Guardian Fabrication; Webster, MA	300	ANSI ONLY	U
Guardian Industries; Carleton, MI	933	ANSI ONLY	U
Guardian Industries; Corsicana, TX	1248	ANSI ONLY	U
Guardian Industries; Fort Lauderdale, FL	1161	ANSI ONLY	U
Guardian Industries; Kingsburg, CA	968	ANSI ONLY	U
Guardian Industries; Tillsonburg, Ontario, Canada	1462	ANSI ONLY	U
Hamilton Glass Products; Vincennes, IN	54		U
Hehr Glass Co; Newton, KS	1492		U
Hehr Glass Co; Chesaning, MI	1062		U
Hordis Brothers, Inc.; Warrenton, MO	1379		U
Insulpane, Inc; New Windsor, NY	1468		U
Lin's Glass Co Ltd; Taiwan, R.O.C.	1465		20" by 36"
Nashville Tempered Glass; Nashville, TN	1416		U
O & W Glass Ind; Everett, WA	1429		U
OPG Industries; Jefferson, TX	1281		U
OPG Industries; Lewisburg, OH	1050		U
Perma*View Processed Glass; Clarksville, TN	1505		U
PPG Industries; Carlisle, PA	250		U
PPG Industries; Fresno, CA	295		U
PPG Industries; Wichita Falls, TX	1110		U
San Jacinto Glass Co; Houston, TX	1292		U
Shaw Glass Co Inc; South Easton, MA	1484		U
Sunbelt Glass, Inc; Tulsa, OK	1453		U
Swift Glass Co., Inc.; Elmira Heights, NY	1555		U
Tempglass, Inc; Perrysburg, OH	1039		U
Tempglass Eastern, Inc; Norcross, GA	979		U
TRACO (Three Rivers Alum.); Warrendale, PA	1308		U
Viracon, Inc; Owatonna, MN	1476		U
<b>5/32 inch tempered transparent glass</b>			
AFG Industries; Greenland, TN	955		U
AFG Industries; Kingsport, TN	949		U
AFG Glass Inc; Concord, Ontario, Canada	1486		U
Ardco, Inc; Chicago, IL	1323	ANSI ONLY	U
The Chamberlain Group; Malvern, AR	1376		U
Downey Glass Co; Downey, CA	1002	ANSI ONLY	U
Downey Glass Co; Downey, CA	1003	CPSC ONLY	U
Elgin Precision Glass Co; Elgin, IL	1370		U

SGCC NO.MAX. SIZE  
CERTIFIED**TEMPERED TRANSPARENT GLASS - continued**  
**5/32 inch tempered transparent glass - continued**

Fulton Glass Inds; Red Oak, GA	1123	ANSI ONLY	U
Fulton Glass Inds; Red Oak, GA	1130	CPSC ONLY	U
Gemtron Corp; Sweetwater, TN	1332	ANSI ONLY	U
Gemtron Corp; Sweetwater, TN	1333	CPSC ONLY	U
General Glass Corp; Denver, CO	1180		U
Geneva Glass Industries; Geneva, IL	1502		U
Good News Glass; Springfield, MA	1540		U
Guardian Industries; Carleton, MI	934	ANSI ONLY	U
Guardian Industries; Corsicana, TX	1249	ANSI ONLY	U
Guardian Industries; Kingsburg, CA	969	ANSI ONLY	U
Hamilton Glass Products; Vincennes, IN	1385		U
Hankuk Glass Ind; Seoul, Korea	1479	ANSI ONLY	U
Hordis Brothers, Inc.; Warrenton, MO	1380		U
Howe-Martz Glass; Detroit, MI	1265		U
O & W Glass Ind; Everett, WA	1466		U
OPG Industries; Lewisburg, OH	1452		U
PPG Industries; Carlisle, PA	675		U
PPG Industries; Fresno, CA	676		U
PPG Industries; Wichita Falls, TX	1111		U
Sunglas Products; Claremore, OK	1361	ANSI ONLY	U
Sunglas Products; Claremore, OK	1365	CPSC ONLY	U
Tempered Glass, Inc; Austell, GA	1474	ANSI ONLY	U
Tempered Glass, Inc; Austell, GA	1475	CPSC ONLY	U
Tempglass Eastern, Inc; Norcross, GA	1259		U

**.169 inch tempered transparent glass**

Gemtron Corp; Sweetwater, TN	1426	ANSI ONLY	U
Gemtron Corp; Sweetwater, TN	1427	CPSC ONLY	U

**3/16 inch tempered transparent glass**

ACI Glass; Santa Fe Springs, CA	1157		U
AFG Industries; Greenland, TN	220		U
AFG Industries; Kingsport, TN	28		U
AFG Glass Inc; Concord, Ontario, Canada	1487		U
American Flat Glass Distrib; Fall River, MA	1519		U
American Flat Glass Distrib; Marietta, GA	1230		U
Anglass Industries; San Fernando, CA	999	ANSI ONLY	U
Arch Tempered Glass; Orlando, FL	1527	ANSI ONLY	U
Ardco, Inc; Chicago, IL	1042	ANSI ONLY	U
Binswanger/ACI Glass; Dallas, TX	400		U
The Chamberlain Group; Malvern, AR	1377		U
Downey Glass Co; Downey, CA	606	ANSI ONLY	U
Downey Glass Co; Downey, CA	806	CPSC ONLY	U
Downey Glass Co; Los Angeles, CA	630	ANSI ONLY	U
Downey Glass Co; Los Angeles, CA	812	CPSC ONLY	U
Elgin Precision Glass Co; Elgin, IL	1371		U
Empire Glass, Inc; Bronx, NY	1398		U
Falconer Glass Industries; Falconer, NY	1545		U
Flex-Temp, Inc; Irving, TX	1437	ANSI ONLY	U
Flex-Temp, Inc; Irving, TX	1438	CPSC ONLY	U
Floral Glass & Mirror; Hauppauge, NY	1547		U
Fulton Glass Inds; Red Oak, GA	1124	ANSI ONLY	U
Fulton Glass Inds; Red Oak, GA	1131	CPSC ONLY	U
Gemtron Corp; Sweetwater, TN	1201	ANSI ONLY	U
Gemtron Corp; Sweetwater, TN	1202	CPSC ONLY	U
General Glass Corp; Denver, CO	1181		U
Geneva Glass Industries; Geneva, IL	1500		U
The Glass Factory; Ronkonkoma, NY	1459		U
Glasstemp, Inc.; Bensenville, IL	1381		U
GMG Industries, Inc.; Cassopolis, MI	1567		U
Good News Glass; Springfield, MA	1541		U
Guardian Fabrication; Rogers, AR	1356		U

	<u>SGCC NO.</u>		<u>MAX. SIZE CERTIFIED</u>
<b>TEMPERED TRANSPARENT GLASS - continued</b>			
<b>3/16 inch tempered transparent glass - continued</b>			
Guardian Fabrication; Webster, MA	1216	ANSI ONLY	U
Guardian Industries; Carleton, MI	631	ANSI ONLY	U
Guardian Industries; Corsicana, TX	1250	ANSI ONLY	U
Guardian Industries; Fort Lauderdale, FL	633	ANSI ONLY	U
Guardian Industries; Kingsburg, CA	970	ANSI ONLY	U
Hamilton Glass Products; Vincennes, IN	1200		U
Hankuk Glass Ind; Seoul, Korea	1480	ANSI ONLY	U
Havlin Witkin Corp; Santa Clara, CA	1494		U
Hehr Glass Co; Newton, KS	1493		U
Hehr Glass Co; Chesaning, MI	1510		32" by 60"
Hordis Brothers, Inc.; Warrenton, MO	1421		U
Howe-Martz Glass; Detroit, MI	1266		U
Insulpane, Inc; New Windsor, NY	1469		U
Nashville Tempered Glass; Nashville, TN	1467		U
OPG Industries; Jefferson, TX	1286		U
OPG Industries; Lewisburg, OH	185		U
Perma*View Processed Glass; Clarksville, TN	1506		U
PPG Industries; Carlisle, PA	249		U
PPG Industries; Fresno, CA	64		U
PPG Industries; Miami, FL	195		U
PPG Industries; Wichita Falls, TX	1112		U
San Jacinto Glass Co; Houston, TX	1293		U
Shaw Glass Co Inc; South Easton, MA	1034		U
Spectrum Glass; Clinton, NC	1073	ANSI ONLY	U
Spectrum Glass; Clinton, NC	1080	CPSC ONLY	U
Sunbelt Glass, Inc; Tulsa, OK	1454		U
Sunglas Products; Claremore, OK	1362	ANSI ONLY	U
Sunglas Products; Claremore, OK	1366	CPSC ONLY	U
Swift Glass Co., Inc.; Elmira Heights, NY	1556		U
Tempered Glass Corp; Tampa, FL	1395		U
Tempered Glass, Inc; Austell, GA	320	ANSI ONLY	U
Tempered Glass, Inc; Austell, GA	862	CPSC ONLY	U
Tempered Glass Int'l; Union City, CA	879	CPSC ONLY	U
Tempered Glass Int'l; Union City, CA	1241	ANSI ONLY	U
Tempglass, Inc; Perrysburg, OH	592		U
Tempglass Eastern, Inc; Norcross, GA	981		U
Tempglass Southern, Inc; Grand Prairie, TX	1219		U
Texas Tempered Glass Co; Houston, TX	1192		U
TRACO (Three Rivers Alum.); Warrendale, PA	1310		U
Vidrierias de Llodio; Alava, Spain	1445	CPSC ONLY	U
Viracon, Inc; Owatonna, MN	1403		U
Viracon + Insolair; Vacaville, CA	1571		U
Virginia Glass Products; Martinsville, VA	12		U
<b>7/32 inch tempered transparent glass</b>			
AFG Glass Inc; Concord, Ontario, Canada	1488		U
<b>1/4 inch tempered transparent glass</b>			
ACI Glass; Santa Fe Springs, CA	1535		U
AFG Industries; Greenland, TN	89		U
AFG Industries; Kingsport, TN	24		U
AFG Glass Inc; Concord, Ontario, Canada	1489		U
American Flat Glass Distrib; Fall River, MA	1520		U
American Flat Glass Distrib; Marietta, GA	1231		U
Anglass Industries; San Fernando, CA	1000	ANSI ONLY	U
Arch Tempered Glass; Orlando, FL	1528	ANSI ONLY	U
Ardco, Inc; Chicago, IL	1049	ANSI ONLY	U
Binswanger/ACI Glass; Dallas, TX	402		U
The Chamberlain Group; Malvern, AR	1378		U
Colonial Mirror & Glass; Brooklyn, NY	1165		U
Downey Glass Co; Downey, CA	609	ANSI ONLY	U
Downey Glass Co; Downey, CA	807	CPSC ONLY	U

SGCC NO.MAX. SIZE  
CERTIFIED**TEMPERED TRANSPARENT GLASS - continued****1/4 inch tempered transparent glass - continued**

Downey Glass Co; Los Angeles, CA	514	ANSI ONLY	U
Downey Glass Co; Los Angeles, CA	813	CPSC ONLY	U
Elgin Precision Glass Co; Elgin, IL	1372		U
Empire Glass, Inc; Bronx, NY	1399		U
Falconer Glass Industries; Falconer, NY	709		U
Flex-Temp, Inc; Irving, TX	390	ANSI ONLY	U
Flex-Temp, Inc; Irving, TX	872	CPSC ONLY	U
Floral Glass & Mirror; Hauppauge, NY	1548		U
Fulton Glass Inds; Red Oak, GA	1125	ANSI ONLY	U
Fulton Glass Inds; Red Oak, GA	1132	CPSC ONLY	U
Gemtron Corp; Sweetwater, TN	1477	ANSI ONLY	U
Gemtron Corp; Sweetwater, TN	1478	CPSC ONLY	U
General Glass Corp; Denver, CO	1182		U
Geneva Glass Industries; Geneva, IL	1501		U
The Glass Factory; Ronkonkoma, NY	1460		U
Glass Tempering Service; Detroit, MI	1238		U
Glasstemp, Inc.; Bensenville, IL	1382		U
GMG Industries, Inc.; Cassopolis, MI	1568		U
Good News Glass; Springfield, MA	1542		U
Guardian Fabrication; Rogers, AR	1357		U
Guardian Fabrication; Webster, MA	662	ANSI ONLY	U
Guardian Industries; Carleton, MI	131	ANSI ONLY	U
Guardian Industries; Corsicana, TX	1251	ANSI ONLY	U
Guardian Industries; Fort Lauderdale, FL	40	ANSI ONLY	U
Guardian Industries; Kingsburg, CA	971	ANSI ONLY	U
Hamilton Glass Products; Vincennes, IN	57		U
Hankuk Glass Ind; Seoul, Korea	1413	ANSI ONLY	U
Havlin Witkin Corp; Santa Clara, CA	1496		U
Hehr Glass Co; Newton, KS	1516		U
Hehr Glass Co; Chesaning, MI	1517		U
Hordis Brothers, Inc.; Warrenton, MO	1448		U
Howe-Martz Glass; Detroit, MI	1268		U
Insulpane, Inc; New Windsor, NY	1470		U
Milgard Tempering Inc; Tacoma, WA	1578		U
Nashville Tempered Glass; Nashville, TN	1417		U
OPG Industries; Jefferson, TX	1287		U
OPG Industries; Lewisburg, OH	186		U
Perma*View Processed Glass; Clarksville, TN	1554		U
PPG Industries; Carlisle, PA	382	ANSI ONLY	U
PPG Industries; Ford City, PA	70		U
PPG Industries; Miami, FL	194		U
PPG Industries; Wichita Falls, TX	1113	ANSI ONLY	U
Saint Gobain; The Netherlands	1393	ANSI ONLY	U
San Jacinto Glass Co; Houston, TX	1294		U
Shaw Glass Co Inc; South Easton, MA	1035		U
Spectrum Glass; Clinton, NC	1074	ANSI ONLY	U
Spectrum Glass; Clinton, NC	1081	CPSC ONLY	U
Sunbelt Glass, Inc; Tulsa, OK	1455		U
Sunglas Products; Claremore, OK	1363	ANSI ONLY	U
Sunglas Products; Claremore, OK	1367	CPSC ONLY	U
Swift Glass Co., Inc.; Elmira Heights, NY	1557		U
Temp-Tech Industries, Inc; Chicago, IL	986		U
Tempered Glass Corp; Tampa, FL	337		U
Tempered Glass, Inc; Austell, GA	321	ANSI ONLY	U
Tempered Glass, Inc; Austell, GA	863	CPSC ONLY	U
Tempered Glass Int'l; Union City, CA	1204	ANSI ONLY	U
Tempered Glass Int'l; Union City, CA	1205	CPSC ONLY	U
Tempglass, Inc; Perrysburg, OH	1420		U
Tempglass Eastern, Inc; Norcross, GA	982		U
Tempglass Southern, Inc; Grand Prairie, TX	1044		U
Texas Tempered Glass Co; Houston, TX	137		U
TRACO (Three Rivers Alum.); Warrendale, PA	1311		U
Viracon, Inc; Owatonna, MN	1404		U
Viracon + Insolair; Vacaville, CA	1572		U



	<u>SGCC NO.</u>		<u>MAX. SIZE CERTIFIED</u>
<b>TEMPERED TRANSPARENT GLASS - continued</b>			
<b>1/4 inch tempered transparent glass - continued</b>			
Virginia Glass Products; Martinsville, VA	14		U
<b>5/16 inch tempered transparent glass</b>			
Hankuk Glass Ind; Seoul, Korea	1481	ANSI ONLY	U
Spectrum Glass; Clinton, NC	1075	ANSI ONLY	U
Spectrum Glass; Clinton, NC	1082	CPSC ONLY	U
<b>3/8 inch tempered transparent glass</b>			
ACI Glass; Santa Fe Springs, CA	639		U
AFG Industries; Greenland, TN	90		U
AFG Glass Inc; Concord, Ontario, Canada	1490		U
American Flat Glass Distrib; Fall River, MA	1521		U
American Flat Glass Distrib; Marietta, GA	1232		U
Arch Tempered Glass; Orlando, FL	1529	ANSI ONLY	U
Binswanger/ACI Glass; Dallas, TX	1107	ANSI ONLY	U
Colonial Mirror & Glass; Brooklyn, NY	1166		U
Downey Glass Co; Los Angeles, CA	515	ANSI ONLY	U
Downey Glass Co; Los Angeles, CA	814	CPSC ONLY	U
Empire Glass, Inc; Bronx, NY	1400		U
Falconer Glass Industries; Falconer, NY	1280		U
Flex-Temp, Inc; Irving, TX	391	ANSI ONLY	U
Flex-Temp, Inc; Irving, TX	873	CPSC ONLY	U
Floral Glass & Mirror; Hauppauge, NY	1549		U
Fulton Glass Inds; Red Oak, GA	1126	ANSI ONLY	U
Fulton Glass Inds; Red Oak, GA	1212	CPSC ONLY	U
Geneva Glass Industries; Geneva, IL	1503		U
Glasstemp, Inc.; Bensenville, IL	1383		U
Good News Glass; Springfield, MA	1573		U
Guardian Fabrication; Webster, MA	471	ANSI ONLY	U
Guardian Industries; Corsicana, TX	1253	ANSI ONLY	U
Guardian Industries; Fort Lauderdale, FL	41	ANSI ONLY	U
Hankuk Glass Ind; Seoul, Korea	1482	ANSI ONLY	U
Havlin Witkin Corp; Santa Clara, CA	1497		U
Howe-Martz Glass; Detroit, MI	1269		U
Insulpane, Inc; New Windsor, NY	1471		U
PPG Industries; Miami, FL	1067	ANSI ONLY	U
San Jacinto Glass Co; Houston, TX	1295		U
Shaw Glass Co Inc; South Easton, MA	1036		U
Spectrum Glass; Clinton, NC	1076	ANSI ONLY	U
Spectrum Glass; Clinton, NC	1083	CPSC ONLY	U
Sunbelt Glass, Inc; Tulsa, OK	1456		U
Sunglas Products; Claremore, OK	1374	ANSI ONLY	U
Sunglas Products; Claremore, OK	1375	CPSC ONLY	U
Swift Glass Co., Inc.; Elmira Heights, NY	1558		U
Tempered Glass Corp; Tampa, FL	348		U
Tempered Glass, Inc; Austell, GA	322	ANSI ONLY	U
Tempered Glass, Inc; Austell, GA	865	CPSC ONLY	U
Tempered Glass Int'l; Union City, CA	482	ANSI ONLY	U
Tempered Glass Int'l; Union City, CA	881	CPSC ONLY	U
Tempglass, Inc; Perrysburg, OH	594		U
Tempglass Eastern, Inc; Norcross, GA	1058		U
Tempglass Southern, Inc; Grand Prairie, TX	1045		U
Texas Tempered Glass Co; Houston, TX	1408		U
Viracon, Inc; Owatonna, MN	1508		U
Virginia Glass Products; Martinsville, VA	93		U
<b>1/2 inch tempered transparent glass</b>			
ACI Glass; Santa Fe Springs, CA	640		U
AFG Glass Inc; Concord, Ontario, Canada	1491		U
American Flat Glass Distrib; Fall River, MA	1522		U
American Flat Glass Distrib; Marietta, GA	1406		U

	<u>SGCC NO.</u>		<u>MAX. SIZE CERTIFIED</u>
<b>TEMPERED TRANSPARENT GLASS - continued</b>			
<b>1/2 inch tempered transparent glass - continued</b>			
Arch Tempered Glass; Orlando, FL	1530	ANSI ONLY	U
Binswanger/ACI Glass; Dallas, TX	1108	ANSI ONLY	U
Bogardus Wilson Ltd.; Winnipeg, Manitoba, CANADA	1525		U
Colonial Mirror & Glass; Brooklyn, NY	1167		U
Downey Glass Co; Los Angeles, CA	516	ANSI ONLY	U
Downey Glass Co; Los Angeles, CA	815	CPSC ONLY	U
Empire Glass, Inc; Bronx, NY	1401		U
Falconer Glass Industries; Falconer, NY	711		U
Flex-Temp, Inc; Irving, TX	392	ANSI ONLY	U
Flex-Temp, Inc; Irving, TX	874	CPSC ONLY	U
Floral Glass & Mirror; Hauppauge, NY	1550		U
Fulton Glass Inds; Red Oak, GA	1127	ANSI ONLY	U
Fulton Glass Inds; Red Oak, GA	1134	CPSC ONLY	U
Geneva Glass Industries; Geneva, IL	1504		U
The Glass Factory; Ronkonkoma, NY	1461		U
Glasstemp, Inc.; Bensenville, IL	1384		U
Guardian Fabrication; Webster, MA	1235	ANSI ONLY	U
Guardian Industries; Fort Lauderdale, FL	1004	ANSI ONLY	U
Hankuk Glass Ind; Seoul, Korea	1483	ANSI ONLY	U
Havlin Witkin Corp; Santa Clara, CA	1498		U
Howe-Martz Glass; Detroit, MI	1270		U
Insulpane, Inc; New Windsor, NY	1472		U
PPG Industries; Miami, FL	1336	ANSI ONLY	U
San Jacinto Glass Co; Houston, TX	1296		U
Shaw Glass Co Inc; South Easton, MA	1037		U
Spectrum Glass; Clinton, NC	1077	ANSI ONLY	U
Spectrum Glass; Clinton, NC	1084	CPSC ONLY	U
Sunbelt Glass, Inc; Tulsa, OK	1457		U
Swift Glass Co., Inc.; Elmira Heights, NY	1559		U
Tempered Glass Corp; Tampa, FL	338		U
Tempered Glass, Inc; Austell, GA	323	ANSI ONLY	U
Tempered Glass, Inc; Austell, GA	866	CPSC ONLY	U
Tempered Glass Int'l; Union City, CA	483	ANSI ONLY	U
Tempered Glass Int'l; Union City, CA	882	CPSC ONLY	U
Tempglass, Inc; Perrysburg, OH	595		U
Tempglass Eastern, Inc; Norcross, GA	1059		U
Tempglass Southern, Inc; Grand Prairie, TX	1046		U
Texas Tempered Glass Co; Houston, TX	669		U
Viracon, Inc; Owatonna, MN	1509		U
Virginia Glass Products; Martinsville, VA	94		U
<b>5/8 inch tempered transparent glass</b>			
Spectrum Glass; Clinton, NC	1078	ANSI ONLY	U
Spectrum Glass; Clinton, NC	1085	CPSC ONLY	U
<b>3/4 inch tempered transparent glass</b>			
Binswanger/ACI Glass; Dallas, TX	1225	ANSI ONLY	U
Empire Glass, Inc; Bronx, NY	1402		U
Falconer Glass Industries; Falconer, NY	712		U
Floral Glass & Mirror; Hauppauge, NY	1551		U
Spectrum Glass; Clinton, NC	1079	ANSI ONLY	U
Spectrum Glass; Clinton, NC	1086	CPSC ONLY	U
Virginia Glass Products; Martinsville, VA	95		U
<b>TEMPERED PATTERNED GLASS</b>			
<b>1/8 inch tempered patterned glass</b>			
Arch Tempered Glass; Orlando, FL	1531	ANSI ONLY	U
Hehr Glass Co; Chesaning, MI	1514		32" by 60"
Floral Glass & Mirror; Hauppauge, NY	1552		U
<b>5/32 inch tempered patterned glass</b>			
American Flat Glass Distrib; Fall River, MA	1524		U

	<u>SGCC NO.</u>		<u>MAX. SIZE CERTIFIED</u>
<b>TEMPERED PATTERNED GLASS - continued</b>			
<b>5/32 inch tempered patterned glass - continued</b>			
Arch Tempered Glass; Orlando, FL	1532	ANSI ONLY	U
Good News Glass; Springfield, MA	1561		U
<b>3/16 inch tempered patterned glass</b>			
American Flat Glass Distrib; Fall River, MA	1523		U
Flex-Temp, Inc; Irving, TX	1537	ANSI ONLY	U
Flex-Temp, Inc; Irving, TX	1538	CPSC ONLY	U
<b>7/32 inch tempered patterned glass</b>			
Floral Glass & Mirror; Hauppauge, NY	1553		U
<b>1/8 inch tempered patterned glass (shallow)</b>			
Gemtron Corp; Sweetwater, TN	1423	CPSC ONLY	U
ACI Glass; Santa Fe Springs, CA	1226		U
AFG Industries; Greenland, TN	587		U
Downey Glass Co; Downey, CA	604	ANSI ONLY	U
Downey Glass Co; Downey, CA	808	CPSC ONLY	U
Gemtron Corp; Sweetwater, TN	1422	ANSI ONLY	U
Good News Glass; Springfield, MA	1543		U
Guardian Fabrication; Rogers, AR	1358		U
Guardian Industries; Corsicana, TX	1463	ANSI ONLY	U
Guardian Industries; Kingsburg, CA	1303	ANSI ONLY	U
<b>1/8 inch tempered patterned glass (medium)</b>			
AFG Industries; Kingsport, TN	1414		U
Downey Glass Co; Downey, CA	605	ANSI ONLY	U
Downey Glass Co; Downey, CA	809	CPSC ONLY	U
OPG Industries; Jefferson, TX	1388	ANSI ONLY	U
OPG Industries; Lewisburg, OH	654	ANSI ONLY	U
<b>5/32 inch tempered patterned glass (shallow)</b>			
American Flat Glass Distrib; Marietta, GA	1428		U
Gemtron Corp; Sweetwater, TN	1424	ANSI ONLY	U
Gemtron Corp; Sweetwater, TN	1425	CPSC ONLY	U
Guardian Fabrication; Rogers, AR	1359		U
Guardian Industries; Corsicana, TX	1314	ANSI ONLY	U
Hamilton Glass Products; Vincennes, IN	1386		U
Hehr Glass Co; Newton, KS	1507		U
Vidrierias de Llodio; Alava, Spain	1331	CPSC ONLY	U
<b>5/32 inch tempered patterned glass (medium)</b>			
Guardian Industries; Kingsburg, CA	1301	ANSI ONLY	U
<b>3/16 inch tempered patterned glass (shallow)</b>			
AFG Industries; Greenland, TN	1139		U
AFG Industries; Kingsport, TN	1143		U
American Flat Glass Distrib; Marietta, GA	1415		U
Downey Glass Co; Downey, CA	607	ANSI ONLY	U
Downey Glass Co; Downey, CA	810	CPSC ONLY	U
Downey Glass Co; Los Angeles, CA	935	ANSI ONLY	U
Downey Glass Co; Los Angeles, CA	1114	CPSC ONLY	U
Falconer Glass Industries; Falconer, NY	1330		U
Fulton Glass Inds; Red Oak, GA	1326	ANSI ONLY	U
Fulton Glass Inds; Red Oak, GA	1327	CPSC ONLY	U
Glass Tempering Service; Detroit, MI	1340		34" by 72"
Good News Glass; Springfield, MA	1544		U
Guardian Industries; Fort Lauderdale, FL	1318	ANSI ONLY	U

SGCC NO.MAX. SIZE  
CERTIFIED**TEMPERED PATTERNED GLASS - continued****3/16 inch tempered patterned glass (shallow) - continued**

Guardian Industries; Kingsburg, CA	1304	ANSI ONLY	U
Hamilton Glass Products; Vincennes, IN	1387		U
Howe-Martiz Glass; Detroit, MI	1344		U
OPG Industries; Lewisburg, OH	188	ANSI ONLY	U
PPG Industries; Miami, FL	1298	ANSI ONLY	U
Shaw Glass Co Inc; South Easton, MA	1299		U
Tempered Glass Corp; Tampa, FL	1329		U
Tempglass Eastern, Inc; Norcross, GA	1338		U
Virginia Glass Products; Martinsville, VA	1275		U

**3/16 inch tempered patterned glass (deep)**

Guardian Fabrication; Rogers, AR	1394		U
OPG Industries; Lewisburg, OH	328	ANSI ONLY	U

**3/16 inch tempered patterned glass (shallow)**

Arch Tempered Glass; Orlando, FL	1562	ANSI ONLY	U
----------------------------------	------	-----------	---

**7/32 inch tempered patterned glass (shallow)**

Downey Glass Co; Downey, CA	608	ANSI ONLY	U
Downey Glass Co; Downey, CA	811	CPSC ONLY	U
Downey Glass Co; Los Angeles, CA	678	ANSI ONLY	U
Downey Glass Co; Los Angeles, CA	817	CPSC ONLY	U
Guardian Industries; Corsicana, TX	1464	ANSI ONLY	U
Havlin Witkin Corp; Santa Clara, CA	1495		U
Insulpane, Inc; New Windsor, NY	1473		U
OPG Industries; Lewisburg, OH	562	ANSI ONLY	U
Tempered Glass Corp; Tampa, FL	1118		U

**LAMINATED TRANSPARENT GLASS****3/16 inch laminated transparent glass**

Guardian Industries; Upper Sandusky, OH	1515		U
Safelite Glass Corp; Wichita, KS	1360		U

**7/32 inch laminated transparent glass**

Falconer-Lewistown; Lewistown, PA	1282	ANSI ONLY	U
Guardian Industries; Upper Sandusky, OH	458	ANSI ONLY	U
Safelite Glass Corp; Wichita, KS	1173	ANSI ONLY	U
Sumitec, Inc; Benton Harbor, MI	1441	ANSI ONLY	U

**1/4 inch laminated transparent glass**

Alumiglass, Inc.; Boca Raton, FL	1569	ANSI ONLY	U
Falconer-Lewistown; Lewistown, PA	1284	ANSI ONLY	U
Guardian Industries; Upper Sandusky, OH	487	ANSI ONLY	U

**3/8 inch laminated transparent glass**

Falconer-Lewistown; Lewistown, PA	1315	ANSI ONLY	U
-----------------------------------	------	-----------	---

**1/2 inch laminated transparent glass**

Alumiglass, Inc.; Boca Raton, FL	1570	ANSI ONLY	U
Falconer-Lewistown; Lewistown, PA	1316	ANSI ONLY	U

**SAFETY PLASTIC SHEET****.080 inch through 0.125 inch acrylic**

Flex-O-Glass, Inc; Dixon, IN	118		U
------------------------------	-----	--	---

	<u>SGCC NO.</u>	<u>MAX. SIZE CERTIFIED</u>
<b>ORGANIC COATED GLASS</b>		
<b>1/8 inch organic coated glass</b>		
Air Seal IG Units Co; Gloucester City, NJ	1511	U
<b>3/16 inch organic coated glass</b>		
Air Seal IG Units Co; Gloucester City, NJ	1512	U
<b>1/4 inch organic coated glass</b>		
Air Seal IG Units Co; Gloucester City, NJ	1513	U
<b>TEMPERED BENT GLASS</b>		
<b>5/32 inch Tempered Bent Glass</b>		
Ardco, Inc; Chicago, IL	1563	U
<b>3/16 inch Tempered Bent Glass</b>		
Ardco, Inc; Chicago, IL	1564	U
<b>1/4 inch Tempered Bent Glass</b>		
Ardco, Inc; Chicago, IL	1565	U
<b>3/8 inch Tempered Bent Glass</b>		
Glasstemp, Inc.; Bensenville, IL	1536	U
<b>1/2 inch Tempered Bent Glass</b>		
Glasstemp, Inc.; Bensenville, IL	1533	U

**ACI GLASS PRODUCTS, INC.**

9010 South Norwalk Boulevard  
Santa Fe Springs, CA 90670

**ALUMIGLASS, INC.**

6251 Park of Commerce Blvd.  
Boca Raton, FL 33487

**AFG INDUSTRIES, INC.**

P.O. Box 929  
Kingsport, TN 37662

▲▲▲  
TEMPERED  
16 CFR 1201-CII  
ANSI Z97.1-1984  
1/8U SGCC-1390  
AFG 006  
-----  
BS 6206A

**AMERICAN FLAT GLASS DISTRIBUTORS**

3200 Austell Road  
Marietta, GA 30060

**AFGD**

ANSI Z97.1-1984  
16CFR 1201-CII  
SGCC 1232 3/8" U

**AFG GLASS, INC.**

75 Doney Crescent  
Concord, Ontario L4K 1P6  
CANADA



TEMPERED/TREMPÉ  
ANSI Z97.1 — 1984  
16 CFR 1201 II  
SGCC 1488 7/32 U  
.....  
-----  
CAN 2 12.18A  
DOT 163 MO6

**ANGLASS INDUSTRIES, INC.**

12364 Gladstone Avenue  
San Fernando, CA 91342

TEMPERED  
SAFETY GLASS  
**ANGLASS**  
CALIFORNIA, USA  
ANSI Z97.1-1984  
SGCC-520 1/8U

**AIR SEAL INSULATING GLASS UNITS CO**

522 Powell Street  
Hillsoucester City, NJ 08030

**AIR SEAL**  
16 CFR 1201-I  
ANSI Z97.1-1984  
SGCC 1512 3/16U

**ARCH TEMPERED GLASS PRODUCTS**

3320 Maggie Blvd.  
Orlando, FL 32811

**ARDCO, INC**  
12400 South Laramie Avenue  
Chicago, IL 60658

**Ardco**  
**TEMPER-GARD**  
ANSI Z97.1-1984  
SGCC-1041 1/8U

**COLONIAL MIRROR AND GLASS CORP.**  
142 19th Street  
Brooklyn, NY 11232

**colonial mirror & glass corp.**  
Glas Steel Tempered Safety Glass  
ANSI Z97.1-1984  
16 CFR 1201-II SGCC-1167 1/2U

**BINSWANGER/ACI GLASS**  
12900 Nicholson Road  
PO Box 815547  
Dallas, TX 75381

**DOWNEY GLASS COMPANY**  
5631 Ferguson Drive  
Los Angeles, CA 90022

**ful-temp**  
SGCC-603 .125U  
ANSI-Z97.1 1984  
16 CFR 1201 II  
SGCC - 805

**BOGARDUS WILSON LTD.**  
121 Plymouth St  
Winnipeg, Manitoba R2X 2T3  
CANADA

**ELGIN PRECISION GLASS COMPANY, INC**  
1200 Abbott Drive  
Elgin, IL 60120

**EPG**  
ANSI Z97.1-1984  
16 CFR 1201 C11  
SGCC-1370 5/32U

**THE CHAMBERLAIN GROUP, INC.**  
P.O. Box H  
Hot Springs, AR 71902

**CHAMBERLAIN**  
TEMPERED SAFETY GLASS  
MALVERN, ARKANSAS  
16CFR 1201 II  
ANSI Z97.1-1984  
SGCC-1377 3/16U

**EMPIRE GLASS, INC.**  
608 East 133rd Street  
Bronx, NY 10454

**EMPIRE GLASS INC.**  
**EGI - SAFGLAS**  
**"ANSI Z 97.1 - 1984"**  
**16 CFR 1201 II**  
**SGCC - 1401 ½ - U**

**FALCONER GLASS INDUSTRIES, INC.**

500 South Work Street  
Falconer, NY 14733

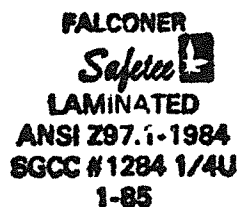


**FLORAL GLASS & MIRROR, INC.**

895 Motor Parkway  
Hauppauge, NY 11788

**FALCONER-LEWISTOWN, INC.**

One Belle Avenue  
Lewistown, PA 17044



**FULTON GLASS INDUSTRIES, INC.**

5225 Welcome All Road  
Red Oak, GA 30272

FULTONTEMP  
SGCC #34 1/2" U  
16 CFR 1201-IL  
SGCC #27  
ANSI Z97.1 1984

**FLEX-O-GLASS, INC.**

1100 North Cicero Avenue  
Chicago, IL 60651



FLEX-O-GLAZE™  
ACRYLIC SAFETY GLAZING  
16 CFR 1201 C11 100U  
ANSI Z97.1-84 SGCC-118

**GEMTRON CORPORATION**

New Highway 68  
P.O. Box 416  
Sweetwater, TN 37874

TEMPERED  
16CFR 1201 C11  
ANSI Z97.1-1984  
3/16 U • SGCC • 1201/1202  
GEMTRON 131 1985

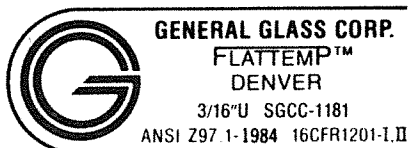
**FLEX-TEMP, INC.**

1120 Vanco Drive  
Irving, TX 75061

FLEX-TEMP  
Tempered Safety Glass  
ANSI Z97.1-1984  
SGCC-390 1/4 U

**GENERAL GLASS CORPORATION**

P.O. Box 390711  
Denver, CO 80238-1711





**GENEVA GLASS INDUSTRIES**

2535 Kaneville Road  
PO Box 541  
Geneva, IL 60134

**GMG INDUSTRIES, INC.**

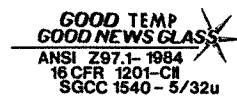
803 Wolfe Avenue  
PO Box 248  
Cassopolis, MI 49031

**THE GLASS FACTORY, INC.**

5012 Expressway Drive, South  
Ronkonkoma, NY 11779

**GOOD NEWS GLASS**

3640 Main Street  
Springfield, MA 01107

**GLASS TEMPERING SERVICE, INC.**

14285 Wyoming Street  
Detroit, MI 48238

**GTS****SAFETY TEMPERED****ANSI Z97.1-1984****16 CFR 1201 II****SGCC-1238 1/4 L****GUARDIAN FABRICATION, INC.**

43043 West Nine Mile Road  
Northville, MI 48167

**GLASSTEMP, INC.**

1001 Foster Avenue  
Bensenville, IL 60106

**GLASSTEMP****ANSI Z97.1-1984****16 CFR 1201C II****SGCC-1382****1/4"U 69****GUARDIAN INDUSTRIES CORP.**

43043 West Nine Mile Road  
Northville, MI 48167



**HAMILTON GLASS PRODUCTS, INC.**


2000 Chestnut Street  
P.O. Box 317  
Vincennes, IN 47591

**TEMPER-TUF**

HAMILTON GLASS  
VINCENNES IN  
ANSI Z97.1-1984  
1/8 U SGCC-54  
16 CFR 1201 C II

**HEHR GLASS COMPANY**

200 South First Street  
PO Box 28  
Chesaning, MI 48616

 SAFETY  
DOT 269  
AS 21401  
SOLID TEMPERED  
.125-L  
ANSI Z97.1-1984  
16 CFR 1201-II  
SGCC-1062

**HANKUK GLASS INDUSTRY, LTD.**

451 Yeo Ui Do-Dong  
Young Deung Po-Ku  
Seoul, KOREA 150



ANSI Z97.1-1984  
SGCC-1413 1/4U

**HORDIS BROTHERS, INC.**

P.O. Box 368  
Warrenton, MO 63383

**HORDIS BROTHERS**

Tempered Safety Glass  
ANSI Z97.1-1984  
16 CFR 1201 II  
SGCC-1379 1/8 U

**HAVLIN WITKIN CORPORATION**

Div. of ACI Glass Products  
750 Walsh Avenue  
Santa Clara, CA 95050



TEMPERED SAFETY GLASS  
16 CFR 1201 CAT. II  
ANSI Z97.1-1984  
SGCC 1497 3/8 U

**HOWE-MARTZ GLASS COMPANY**

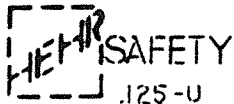
14291 Meyers Road  
Detroit, MI 48227

**FLO H TUF**

TEMPERED SAFETY GLASS  
16 CFR 1201 CII  
ANSI Z97.1-1984 1/2U  
SGCC 1270

**HEHR GLASS COMPANY**

1050 South Meridian  
P.O. Box 846  
Newton, KS 67114-0846



SOLID TEMPERED  
ANSI-Z97.1-1984  
16CFR1201-II  
SGCC-1492  
II-86-7 →

**INSULPANE, INC.**

335 Temple Hill Road  
New Windsor, NY 12550

**LOF GLASS COMPANY**

Hwy. 74 East  
PO Box 969  
Laurinburg, NC 28352

**O & W GLASS INDUSTRIES, INC.**

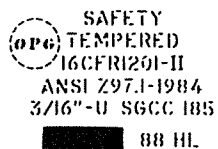
1020 10th Street  
Everett, WA 98201

**LIN'S GLASS COMPANY, LTD.**

c/o Simpson Door Company  
Technical Center  
900 Fourth Avenue  
Shelton, WA 98164

**OPG INDUSTRIES, INC.**

P.O. Box 671  
Lewisburg, OH 45338

**MILGARD TEMPERING, INC.**

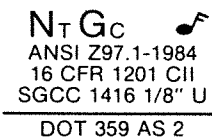
1010 54th Avenue, East  
PO Box 11368  
Tacoma, WA 98411-0368

**PERMA\*VIEW PROCESSED GLASS**

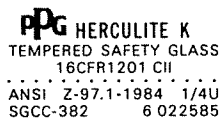
157 Airport Road  
PO Box 2219  
Clarksville, TN 37042-2219

**NASHVILLE TEMPERED GLASS CORP.**

1860 Air Lane Drive  
Nashville, TN 37210

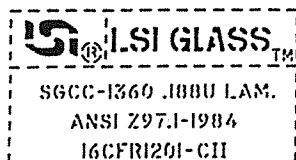
**PPG INDUSTRIES, INC.**

1000 RIDC Plaza  
PO Box 2811  
Pittsburgh, PA 15230



**SAFELITE GLASS CORPORATION**

PO Box 1879  
Wichita, KS 67201

**SPECTRUM GLASS PRODUCTS**

East Railroad Street  
P.O. Box 408  
Clinton, NC 28328

TUF-FLEX® FT 1/4"U  
TEMPERED SAFETY GLASS  
ANSI Z97.1-1984 SGCC-1074  
16 CFR 1201-1, 11 SGCC-1081

**SAINT GOBAIN**

c/o Architectural Concepts, Inc.  
1988 Berkshire Road  
Columbus, OH 43221

**SAINT GOBAIN**

Tempered Safety Glass  
ANSI Z97.1-1984  
SGCC-1393 1/4 U

**SUMITEC, INC.**

470 North Paw Paw Avenue  
PO Box 188  
Benton Harbor, MI 49022

**SUMITEC INC.**  
**SGCC 1441**  
**7/32 U**  
**ANSI Z97.1**  
**1984**

**SAN JACINTO GLASS CO.**

900 Broadway  
PO Box 5207  
Houston, TX 77262

**Starlite**

ANSI Z97.1-1984  
16 CFR 1201 II  
SGCC 1292 1/8 U  
SAN JACINTO GLASS CO.  
HOUSTON, TEXAS

**SUNBELT GLASS, INC.**

8531 East 44th Street  
Tulsa, OK 74145

SUNTEMP® 1-87  
SAFETY TEMPERED  
ANSI Z97.1-1984  
16 CFR 1201 CII  
SGCC-1453 1/8 U

**SHAW GLASS COMPANY, INC.**

55 Bristol Drive  
South Easton, MA 02375

**SOLAR TEMP.**

16 CFR 1201 11

ANSI Z 97.1-1984  
1/4 U SGCC 1035

**SUNGLAS PRODUCTS, INC.**

844 West 30th Street  
PO Box 963  
Claremore, OK 74018

**SUNGLAS®**

TEMPERED  
SAFETY GLASS  
ANSI Z97.1-1984  
SGCC-1363/1367  
16CFR 1201,II

0 0 0 0 0  
1/4 U

**SWIFT GLASS COMPANY, INC.**  
131 West 22nd Street  
Elmira Heights, NY 14903

**TEMPERED GLASS INTERNATIONAL, INC.**  
700 Bradford Way  
Union City, CA 94587

- Tuf-flex Glass FT 1/4"-U I •
- TEMPERED SAFETY GLASS •
- ANSI Z97.1-1984 16 CFR 1201-1&11
- SGCC-1204 SGCC-1205 •

**TEMP-TECH INDUSTRIES, INC.**  
6166 South Sayre  
Chicago, IL 60638

**TEMPGLASS, INC.**  
Ampoint  
291 M Street  
Perrysburg, OH 43551

**TEMPGLASS, INC.**  
16 CFR 1201 CH  
ANSI Z97.1 - 1984  
SGCC 1420  
1/4 - U (1)

**TEMPERED GLASS CORPORATION**  
6900 Adamo Drive  
Tampa, FL 33619

**TEMPCO**  
SGCC-337 .250 U  
SGCC-832  
16 CFR 1201-II  
ANSI Z97.1 1984



**TEMPGLASS EASTERN, INC.**  
Blue Ridge Industrial Park  
P.O. Box 928  
Norcross, GA 30071

**TEMPGLASS  
EASTERN**  
ANSI Z97.1-1984  
16CFR 1201-II  
SGCC-979 1/4" U  
85

**TEMPERED GLASS, INC.**  
7160 Delta Circle  
Austell, GA 30001

**TEMPGLASS SOUTHERN, INC.**  
1101 Fountain Parkway  
Grand Prairie, TX 75050

- Tuf-flex Glass FT 1/4"-U I •
- TEMPERED SAFETY GLASS •
- ANSI Z97.1-1984 16 CFR 1201-1&11
- SGCC-321 SGCC-863 •

**TEMPGLASS SOUTHERN**  
ANSI Z97.1 - 1984  
SGCC 1045 3/8" U  
16 CFR 1201 - 11

**TEXAS TEMPERED GLASS COMPANY**

1331 West Belt Drive North  
Houston, TX 77024

**TEXAS TEMPERED**

Tempered Safety Glass

ANSI Z97.1-1984

16 CFR 1201 II

SGCC-669 1/2 U

**VIRACON + INSOLAIR**

909 Aldridge Road  
Vacaville, CA 95688

**VIRACON**

**INSOLAIR**

**TEMPERED**

16 CFR 1201 II

ANSI Z97.1 1984

SGCC 1572 1/4 U

**TRACO (THREE RIVERS ALUM.)**

Cranberry Industrial Park

P.O. Box 805

Warrendale, PA 15095



**TRACO VIEW-SAFE  
TEMPERED GLASS**

ANSI Z97.1-1984

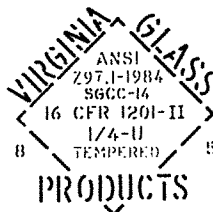
16 CFR 1201 II

SGCC-1313 1/2U

**VIRGINIA GLASS PRODUCTS CORP.**

P.O. Box 5431

Martinsville, VA 24115



**VIDRIERIAS DE LLODIO, S.A.**

c/o Guardian Industries Corp.

43043 West Nine Mile Road

Northville, MI 48167

**TEMPERIT**



1/8 " U SGCC-1407

tempered glass

16 CFR 1201 II

LLODIO-SPAIN

**VIRACON, INC.**

800 Park Drive

P.O. Box 248

Owatonna, MN 55060

**VIRACON**

**TEMPERED**

16 CFR 1201 II

SGCC 1404 1/4" U

ANSI Z97.1 1984

1 85

"American National Standard for Safety Glazing Materials used in Buildings -  
Safety Performance Specifications and Methods of Test: ANSI Z97.1-1984"

Copies of ANSI Z97.1-1984 may be obtained from:

American National Standards Institute  
1430 Broadway  
New York, NY 10018

"Consumer Product Safety Commission Safety Standard for Architectural Glazing  
Materials - at Title 16, Part 1201 of the Code of Federal Regulations:  
16 CFR 1201"

Copies of 16 CFR 1201 may be obtained from:

Consumer Products Safety Commission  
5401 Westbard Avenue  
Bethesda, MD 20016



**safety glazing certification council**

**ETL Testing Laboratories, Inc.**

**Industrial Park - Route 11**

**Cortland, New York 13045-0950**

**Phone 607-753-6711**

Additional SGCC Certified Products Directories are available from the SGCC office for \$2.50/copy. A check must accompany each order.

\* \* \* \* \*

### SGCC DIRECTORY ORDER FORM

PLEASE SEND . . . \_\_\_\_\_ copies of SGCC Certified Products Directory at \$2.50/copy = \_\_\_\_\_ to:

\_\_\_\_\_  
Name

\_\_\_\_\_  
Company

\_\_\_\_\_  
Address

\_\_\_\_\_  
City State Zip Code





**SGCC APPROVED TESTING LABORATORIES  
APPROVED FOR TESTING IN THE ANSI AND CPSC  
CERTIFICATION PROGRAMS**

Architectural Testing, Inc.  
Two Interchange Place  
York, PA 17402-9899  
Attention: Mr. Bruce W. Croak  
Telephone: 717-846-7700

Bowser-Morner, Inc.  
420 Davis Avenue; Box 51  
Dayton, OH 45401  
Attention: Mr. Robert J. Rosencrans  
Telephone: 513-253-8805

ETL Testing Laboratories, Inc.  
5855-P Oakbrook Parkway  
Norcross, GA 30093  
Attention: Mr. William D. Penue  
Telephone: 404-446-7294

ETL Testing Laboratories, Inc.  
Route 11 - Industrial Park  
Cortland, NY 13045-0950  
Attention: Mr. Claude F. Robb  
Telephone: 607-753-6711

Construction Consulting Laboratories, Inc.  
Western Division  
4749 West State Street; Building H  
Ontario, CA 91761  
Attention: Mr. Joseph E. Hawkins, P.E.  
Telephone: 714-591-1789

Miami Testing Laboratory, Inc.  
1640 West 32nd Place  
Hialeah, FL 33012-4585  
Attention: Mr. James W. Bailey  
Telephone: 305-822-1141

Northwest Laboratories  
1530 First Avenue South  
Seattle, WA 98134  
Attention: Mr. Alan J. Potter  
Telephone: 206-622-0680

Patzig Testing Laboratories Company, Inc.  
3922 Delaware Avenue  
Des Moines, IA 50313  
Attention: Mr. Byron A. Marks, P.E.  
Telephone: 515-266-5101

Southwestern Laboratories, Inc.  
2200 Gravel Drive; P.O. Box 1379  
Fort Worth, TX 76101-1379  
Attention: Mr. Wayne Tessener  
Telephone: 817-284-7755

United States Testing Company, Inc.  
5555 Telegraph Road  
Los Angeles, CA 90040  
Attention: Mr. Bernd Givon  
Telephone: 213-723-7181



**safety glazing certification council**  
**ETL TESTING LABORATORIES, INC.**  
Industrial Park • Route 11  
Cortland, NY 13045-0950

**ADDRESS CORRECTION REQUESTED**

**POSTAGE MUST BE  
AFFIXED HERE**

**BULK POSTAGE  
U.S. POSTAGE  
PAID  
PERMIT 37  
CORTLAND, N.Y.**

**IF NOT MAILED IN  
CORTLAND, NEW YORK**