



safety glazing certification council

JULY 1, 1991

certified products directory  
safety glazing material used in buildings



TABLE OF CONTENTS	PAGE
Minutes of Meeting of the Certification Committee . . . . .	4
Roster . . . . .	4
Program Concept . . . . .	8
Procedural Guide . . . . .	9
Certification Guidelines and Interpretations. . . . .	13
SGCC Label Requirements . . . . .	22
CPS Act Labeling Requirements . . . . .	23
Classified Tempered Glass Patterns. . . . .	24
Certified Products (Numerical Sequence) . . . . .	25
Certified Products (Alphabetically By Plant). . . . .	28
Certified Products (By Product Type). . . . .	34
Licensees and Their Typical Labels. . . . .	42
ANSI Z97.1-1984 . . . . .	52
CPSC 16 CFR 1201. . . . .	52
SGCC Directory Order Blank. . . . .	54
SGCC Approved Laboratories. . . . .	Back Cover

**MEETINGS OF THE CERTIFICATION COMMITTEE**

The Certification Committee of the Safety Glazing Certification Council last met on March 17-18, 1991. Minutes of this meeting may be obtained by writing to the Administrative Manager of the Safety Glazing Certification Council (SGCC).

\* \* \* \* \*

Certification in this directory is current as of July 1, 1991; however, products may be certified or have certification removed from time to time. For the most current information please contact the Administrative Manager of SGCC.

Any questions, comments or requests for copies of this directory should be directed to the Administrative Manager of the Safety Glazing Certification Council:

\* \* \* \* \*

**ADMINISTRATION**

Administrator:	ETL Testing Laboratories, Inc. Inds Pk - 3933 US Route 11 PO Box 2040 Cortland, NY 13045-0950 Telephone 607-753-6711 Telefax 607-756-9891
Administrative Manager:	John G. Kent
Administrative Staff:	Cynthia L. Dayton

**ROSTER****SGCC BOARD OF DIRECTORS****REPRESENTING PUBLIC INTEREST**

Mr. Mario J. Cellarosi  
National Institute of Standards Technology  
Room H251; Material Building  
Washington, D.C. 20234  
Telephone: 301-975-6123

Mrs. Jean Cornwell  
225 Swan Lake Road  
Stockbridge, GA 30281  
Telephone: 404-633-1451

Dr. George L. Graf, Jr.  
PO Box 355  
Fitzwillaim NH 03447  
Telephone: 603-585-9427

Dr. Richard A. Behr, P.E.  
Department of Civil Engineering  
University of Missouri-Rolla  
Martin E. Straumanis Hall  
Rolla, MO 65401-0249  
Telephone: 314-341-4763

## REPRESENTING INDUSTRY

Mr. Carlo Carmen, Jr.  
Falconer Glass Industries, Inc.  
500 South Work Street  
Falconer, NY 14733  
Telephone: 716-665-6422  
Telefax: 716-665-6585

Mr. Virgil Taylor  
Glass Tempering Service  
14285 Wyoming St  
Detroit, MI 48238  
Telephone: 313-933-1200  
Telefax: 313-933-0280

Mr. J. Richard Orton  
AFG Industries, Inc.  
PO Box 929  
Kingsport, TN 37662  
Telephone: 615-229-7200  
Telefax: 615-229-7459

Mr. Robert A. Moss  
Hamilton Glass Products  
2000 Chestnut Street  
P. O. Box 317  
Vincennes, IN 47591  
Telephone: 812-882-2680  
Telefax: 812-882-7679

## Honorary Non-Voting Lifetime Member

Mr. Norman Nitschke  
Glasstech, Inc.  
Ampoint Industrial Park  
995 Fourth Street  
Perrysburg, OH 43551  
Telephone: 419-661-9500

## SGCC OFFICERS

President  
First Vice President  
Second Vice President  
Secretary  
Treasurer

Robert A. Moss  
J. Richard Orton  
Mario J. Cellarosi  
Richard T. McGuire  
George L. Graf, Jr.

## LEGAL COUNSEL

William M. Hannay, Esq.  
Schiff Hardin & Waite  
7200 Sears Tower  
Chicago, IL 60606  
Telephone: 312-258-5617

## FINANCIAL AUDITORS

Kane, Bowles, Moore & Wicks  
209 Second Street  
Liverpool, NY 13088  
Telephone: 315-451-6167

## SGCC CERTIFICATION COMMITTEE

Carlo Carmen, Jr. - Chairman

Licensee	Primary Member	First Alternate	Second Alternate
ACI Glass			
ACI Glass Products	Kenny Lyerla	Gordon Lillie	Bill Swanson
AFG Glass, Inc.	Brian J. Burnet		
AFG Industries Inc.	J. Richard Orton	Billie G. Nichols	
All Team Glass & Mirror Ltd			
American Flat Glass Distributors	J. Richard Orton		
Anglass Industries, Inc.			
Arch Aluminum & Glass Co Inc			
Arch Tempered Glass Products			
Arcco, Inc.	Andrew G. Menke		
Asahi Glass Co Ltd			
Builders & Decorators Glass Co.			
Cameron Glass, Inc.	Jim Cameron	John Alajaji	
Cardinal TG			
Colonial Mirror & Glass Corp.	Tullio Paolotti		
Contour Inds Inc.			
CoraGlass Inc.			
D & S Tempered Glass			
Donnelly Corp.			
Downey Glass Company	Wayne Czechowski	Lloyd Pinsky	Robert Mastrapa
Empire Glass, Inc.			
Falconer Glass Industries, Inc.	Richard E. Turner, Sr.	Carlo Carmen, Jr.	Steven Crawford
Falconer-Lewistown, Inc.	Richard E. Turner, Jr.	Carlo Carmen, Jr.	Steven Crawford
Flex-O-Glass, Inc.	Harold G. Warp	Delbert Christensen	
Floral Glass & Mirror, Inc.	Charles Kaplanek		
Four Seasons Solar Products			
Free State Glass Industries	Ronald H. Bodnar	F. Scott Merritt	
Gemtron Corp.	Robert A. Moss	Jack Francis	Bill Long
Glass Factory, Inc., The			
Glasstemp, Inc.	Steve Lacey	Mark Roman	
Globe-Amerada Glass Co (Assurance)	Cheri Kellman	Walt Myers	
Guardian Fabrication, Inc.	Lawana Morrison	Henry A. Gorry	John Jablonski
Guardian Industries Corp.	Lawana Morrison	Henry A. Gorry	John Jablonski
Hamilton Glass Products, Inc.	Robert A. Moss	William D. Hodgdon	J. Bruce Crockett
Hankuk Glass Industry, Ltd.			
Hehr Glass Company			
HGP Industries	Robert B. Williams		
Hoffer's, Inc.	Gary J. Johnson	Gene Kressel	Scott Converse

## SGCC CERTIFICATION COMMITTEE

Licensee	Primary Member	First Alternate	Second Alternate
Independent Insulating Glass Co.			
Laminated Glass Corp.	Valerie Block	Darrell Aldrich	
Macdonald Mirror Inc.			
Marvin Windows	James Krahn	Doug Steinbring	
Milgard Tempering Inc.			
Nashville Tempered Glass Corp.			
Northwest Aluminum Products, Inc.			
Northwestern Industries, Inc.	William J. Larson		
O & W Glass Industries, Inc.			
Pan Lam Industries			
PPG Industries, Inc.	Richard T. McGuire	Charles R. Sutermeister	Glenn R. Davis
Safelite Glass Corp.	Gary Harris	Robert Avers	
Saint Gobain			
Shaw Glass Company, Inc.	Frederic P. Shaw	Dennis Johnson	Walter Gilpatrick
Solar Seal South, Inc.	George L. Morelock	John Downey	
Spectrum Glass Products	Ronald P. Warren		
SPI Glass Products	Mitchel D. Edwards	Lynn Armstrong	Ron Large
Sterling Plumbing Group			
Sumitec, Inc.	Samuel K. Shade	Shigeo Minami	
Sunbelt Glass Inc.	Mike Kelley		
Swift Glass Company, Inc.	Daniel J. Burke	Anthony Speciale	Wayne Brown
Taylor Products, Inc.			
Temp-Tech Industries, Inc.	Bart Semeraro		
Tempered Glass Corporation	Paul F. Tumey	Scott Aldrich	Howard Bienenfeld
Tempered Glass, Inc.	Douglas A. Sampsel	W. Eugene	
Tempglass, Inc.	Sam Baldwin	John Colapietro	
Tempglass Eastern, Inc.	John C. Mulvanerty		
Tempglass Miami			
Tempglass Southern, Inc.	Larry Byrd	Dan Beck	
ThermaGlas Corp.	Scott D. Kuhl	Larry G. Ott	Ronald G. Aldrich
TRACO (Three Rivers Aluminum)	Robert P. Randall	John Kalakos	
U S Precision Glass	John M. Barr	John M. Spiro	
Viracon, Inc.	Harold Landsman	Russ Huffer	Rick Voelker
Viracon West	Dan Zimmerman	Russell J. Mills	Jeff Huffman
Virginia Glass Products Corporation	Robert L. Brown	Brooks R. Leavitt	A. P. Stillman

## Member by virtue of being a director:

National Bureau of Standards	Mario Cellarosi
Consumer	Mrs. Jean Cornwell
Consumer	George L. Graf, Jr.
University of Missouri - Rolla	Richard A. Behr
Glasstech, Inc.	Norman Nitschke

Members from those without  
certified products:

Richard E. Wright Associates	Richard E. Wright
------------------------------	-------------------

## PROGRAM CONCEPT

The Safety Glazing Certification Council (SGCC) is a non-profit corporation, established in 1971 by manufacturers of safety glazing products, building code officials and others concerned with public safety.

SGCC maintains a program which provides for the certification of safety glazing materials found to be in compliance with one or both of the following specifications:

American National Standard for Safety Glazing Materials used in  
Buildings - Safety Performance Specifications and Methods of Test:  
ANSI Z97.1-1984

Consumer Product Safety Commission Safety Standard for Architectural  
Glazing Materials - codified at Title 16, Part 1201 of the Code of  
Federal Regulations: 16 CFR 1201

These specifications subject safety glazing materials, used in buildings and architectural products, to practical tests designed to reduce or eliminate unreasonable risk of death and injury when safety glazing material is broken by human contact.

The specification(s), to which a safety glazing material is certified by SGCC, is at the direction of the licensee.

SGCC responsibilities are threefold: to conduct an independent routine sampling and testing program; to approve and register the form of a manufacturers label; and to withdraw the manufacturers authority to use that label if certified products do not meet specification(s).

Management and control of SGCC is vested in a board of directors, half representing industry and half representing the public interest. To prevent industry dominance of SGCC actions, the public interest directors are empowered to veto any action of the board regardless of the number of directors present at a meeting.

The certification program uses approved testing laboratories under the supervision of a qualified administrator, retained by and responsible to SGCC, who is unaffiliated with any manufacturer of safety glazing materials.

The manufacturer of a product listed in this directory has certified that the labeled material complies with the applicable specification(s). Compliance of a certified product with the applicable specification(s) is checked periodically by an approved testing laboratory under the supervision of SGCC.

All manufacturer's of safety glazing products are eligible and encouraged to apply for SGCC certification. However, products are not certified until a test to the applicable specification(s), conducted at an approved testing laboratory, indicates compliance.

Once certified by SGCC, a product is assigned an exclusive certification number to identify it and the plant at which it is made. After which, to insure continued adherence to the specification(s), SGCC independently selects, at least twice in each year, samples during unannounced visits to the manufacturing plant or randomly from the market place to be tested to the applicable specification(s). Consequent to a test result showing compliance with the applicable specification(s), SGCC authorizes the continued use of the certification number and the product listing in this directory.

This directory is divided into three basic listings: the first is by numerical sequence of certified product numbers listing the manufacturer holding that number; the second is of manufacturers listed alphabetically by plants and the approved products manufactured at those plants; the third is by product type listing all manufacturers and their plants approved for each product type. There is also an alphabetical listing, by manufacturers, illustrating a label typical of the manufacturer. The table of contents lists various procedural and administrative information, as well as information as to where officers and directors may be located.

Upon request, information from SGCC concerning a statement of procedures, or copies of minutes, are available to manufacturers, public interest groups and individuals.

## PROCEDURAL GUIDE

### FOREWORD

The acceptance, of a certified safety glazing material, comes from the conviction such certification assures a high level of safety and quality; and that the integrity of the identifying mark or certification label is reliably maintained by a competent certifying agency.

Both ANSI Z97.1-1984 and 16 CFR 1201 provide sound technical basis for a high level of safety. With the addition of independent administration, plus periodic routine sampling and product evaluation, a program of product certification is maintained which provides an independent third-party certification and testing program. The Certification Program described herein is predicated upon the concept of independent and impartial administration of the certification procedures which are incorporated in the SGCC license agreement.

The SGCC License Agreement is the governing document for the operation of the Certification Program. The Procedural Guide, which is not an extension of this document, is for information and guidance; and serves to describe administrative procedures; and to insure the uniform and equitable operation of the Certification Program.

### GENERAL INFORMATION

#### THE CERTIFICATION CONCEPT

The SGCC Certification Program is based on the conviction no standard of safety or quality is good without the continuous adherence of the licensees' certified products to that standard.

To buyers, specifiers, code officials and users, the SGCC certification label offers the manufacturer's assurance his safety glazing material has been produced in conformance to ANSI Z97.1-1984 and/or 16 CFR 1201.

Federal law, many state statutes, municipal ordinances and building codes require glazing materials, installed in certain defined locations, comply with ANSI Z97.1-1984 and/or 16 CFR 1201.

#### WHO CAN BECOME A LICENSEE?

Every manufacturer of safety glazing materials is eligible, on a voluntary basis, to participate.

#### WHO CONDUCTS THE PROGRAM?

The Safety Glazing Certification Council, a non-profit corporation, is the sponsor of the Certification Program. SGCC supervises the Certification Program under which its administrator periodically checks and reports compliance of the products having the SGCC certification label with the requirements of ANSI Z97.1-1984 and/or 16 CFR 1201.

### ADMINISTRATION

ETL Testing Laboratories, Inc. (ETL), is the independent Administrator of the Certification Program. ETL maintains the SGCC office of certification and conducts the routine day-to-day business. All transactions are done in the name of SGCC.

#### HOW CAN YOU BECOME A LICENSEE?

The following must be accomplished before SGCC can certify an item of safety glazing material:

- a) The manufacturer signs two copies of the SGCC License Agreement (including notarization of the Affidavit, Appendix A) and sends these to SGCC. SGCC will countersign both copies and return one to the manufacturer.
- b) The manufacturer directs an SGCC approved testing laboratory, of its own choosing, to send SGCC one copy of a valid test report indicating the 'initial' or 'prototype' samples submitted for testing are in full and complete compliance with ANSI Z97.1 and/or 16 CFR 1201.
- c) The manufacturer sends to SGCC the six-month certification fee for each item which is to be certified.

Having received all of the above items, SGCC sends to the licensee the notice of product certification which includes an SGCC certification number. This number must be incorporated into the permanent label affixed to each piece of certified safety glazing material. The certified item will be listed in the next edition of the Certified Products Directory.



## HOW THE CERTIFICATION PROGRAM WORKS

Safety glazing materials must meet or exceed the applicable specification(s) before they can be certified by SGCC.

SGCC recognized approved testing laboratories conduct all tests. All laboratories, whose test reports are utilized by the Certification Program, shall be approved by the SGCC Certification Committee. Initial or prototype tests are performed at an approved testing laboratory selected by the licensee. Routine evaluation samples are tested by an approved testing laboratory selected, with the concurrence of the administrator, by the licensee.

## ADMINISTRATOR AUTHORIZES CERTIFICATION

As sole judge of compliance with the applicable specification(s), the administrator authorizes a product which has been approved to be listed in the Certified Products Directory.

Licensees label safety glazing material, with the assigned SGCC number, within the limits of the product size tested. If 34 by 76 inches is the size of the initial or prototype test sample, certification is extended to all sizes and the permanent label contains the letter U, designating unlimited size. The letter L, contained within the permanent label, denotes certification is limited to the width and length of the initial or prototype test sample.

## PRODUCTS LISTED IN CERTIFIED PRODUCTS DIRECTORY

Approved products are listed in a Certified Products Directory, published every six months, which is sent to door, sash and building products manufacturers, glazing contractors, home builders, architects, regulatory agencies and code-making groups, etc. Directory listings contain the licensee's name, plant location, product description and examples of a label typical of that permanently affixed by a licensee to each piece of safety glazing material certified by SGCC.

The administrator selects, at least twice in each year, to be tested to the applicable specification(s), during unannounced visits, samples of certified safety glazing material at the manufacturing plant or from the market place.

## COMPLIANCE SAFEGUARDS

### HOW IS COMPLIANCE ASSURED

Any certified product determined, in the course of routine sampling and evaluation, not in compliance with the applicable specification(s), is subject to the removal of certification. The licensee is given 30-days in which to demonstrate, to the satisfaction of the Administrator, compliance and, if not, certification is automatically withdrawn at the end of the 30-day period.

### CHALLENGING A CERTIFIED PRODUCT

Complaints of non-compliance, from any source, will be investigated promptly by SGCC upon receipt of a written complaint and surety deposit. A minimum surety deposit of \$1,000 will be required for each complaint of non-compliance. The surety deposit will be assessed at the rate of \$350 per man day plus the reasonable cost of travel and the maintenance entailed in resolving such incidents. Refunds of part or all of the surety deposit will be made when applicable. All costs involved will be paid from the complainant's surety deposit, unless the investigation proves non-compliance, in which case all costs will be borne by the licensee found to be in non-compliance.

### WITHDRAWAL OF CERTIFIED PRODUCT

Any product which has been certified by SGCC may be voluntarily withdrawn from the Certification Program by a licensee at any time.

## COSTS

### WHAT DOES THE PROGRAM COST?

The licensee pays, in advance, all projected fees for future routine evaluations to SGCC on a six-month basis. A licensee is invoiced for each certified item separately listed in the Certified Products Directory.

The certification period is from January 1 - June 30 or July 1 - December 31. The Licensee's initial invoice will be determined by the payment schedule as is listed below: All subsequent invoices will be for a full certification period.

<u>DATE</u>	<u>ADMINISTRATIVE/CONTINGENCY FEE</u>	<u>TEST FEE</u>
January 1 - March 31	100%	100%
April 1 - June 30	50%	None
July 1 - September 30	100%	100%
October 1 - December 31	50%	None

Initial certification between April 1 to June 30 and October 1 to December 31 will require a selection in the first 3 months of the next 6 month certification period.

#### **CERTIFICATION PROGRAM DOCUMENTS AND AGREEMENTS**

##### **LICENSE AGREEMENT**

This agreement, incorporating independent program administration and routine periodic independent sampling and evaluation, governs the relationship between SGCC and the licensee.

Future amendments or revisions to the License Agreement will be recommended by the SGCC Certification Committee and enacted by the SGCC Board of Directors.

##### **EFFECTIVE DATE, DURATION AND TERMINATION**

The License Agreement, effective from the date of its execution, has a validity of six months (adjustable to a January 1 to June 30 or a July 1 to December 31 basis) and, unless revoked by SGCC for causes set-forth in the document, is automatically renewed for successive additional periods of six months, unless either party gives notice at least 60 days prior to the date of expiration that cancellation is requested.

Upon its proper execution and acceptance by SGCC, the preissued certification number bond informs a licensee of the certification number of an item to be certified in the future. If the licensee marks production with the certification number, prior to actual certification, the bond is forfeited to SGCC.

Upon its proper execution and acceptance by SGCC, the test release bond permits the continuation of certification of an item when production facilities are shut down. If the licensee does not notify SGCC, within one week of the resumption of production, the bond is forfeited to SGCC.

##### **ADMINISTRATIVE SERVICE AGREEMENT**

This agreement, entered into by SGCC and ETL Testing Laboratories, Inc., governs the relationship between SGCC and ETL, the independent administrator. In general, it provides that the Administrator

- a) samples certified products routinely;
- b) has the right to witness any and all testing required by the program;
- c) reviews all test reports in order to determine compliance of the certified product with the applicable specification(s);
- d) inspects and approves all in-plant and test laboratory test facilities for use in this Certification Program (test laboratories are approved by the SGCC Certification Committee);
- e) publishes and mails the SGCC certified products directory on or about January 1 and July 1 of each year;
- f) handles all routine clerical duties of SGCC with respect to certification matters;
- g) acts as SGCC treasurer, invoices licensees, maintains a bank account and disburses funds (fiscal reports are made to the SGCC Certification Committee);
- h) furnishes all testing except for initial or prototype tests;
- i) attends all scheduled meetings of the SGCC Certification Committee and;
- j) in all of its actions, acts in the name of SGCC.

**CERTIFIED PRODUCTS DIRECTORY**

This directory contains a listing of the certified safety glazing materials of each licensee.

**CERTIFICATION LABEL**

The certification label, containing a number that refers to the listing in the Certified Products Directory, is permanently affixed to each piece of certified safety glazing material by the licensee. The listing, in the directory, provides a complete product description including licensee's name, plant location, etc.

**PROGRAM RESPONSIBILITY**

The SGCC Board of Directors has overall responsibility for the well being and acceptance of the Certification Program by industry, building officials and the public. It also bears corporate legal responsibility.

The SGCC Certification Committee has the responsibility for the general procedure and policy pertaining to the conduct of the Certification Program. As a part thereof, it:

- a) establishes certification "guidelines;"
- b) determines, where a question is raised by a licensee or the Administrator, the applicability of the specification(s) in specific situations.
- c) approves testing laboratories;
- d) determines which specifications are to be designated effective for the purposes of product certification and the date or dates on which they become effective;
- e) recommends to the SGCC Board of Directors changes to be made in the license agreement.

**COMMUNICATIONS**

In all matters concerning the administration and implementation of the SGCC certification program, correspondence may be directed to any of the following:

Mr. Robert A. Moss, SGCC President  
c/o Hamilton Glass Products  
2000 Chestnut Street  
PO Box 317  
Vincennes, IN 47591  
Telephone: 812-882-2680

Mr. Carlo Carmen, Jr. Chairman  
SGCC Certification Committee  
c/o Falconer Glass Industries, Inc.  
500 South Work Street  
Falconer, NY 14733  
Telephone: 716-665-6422

Mr. John G. Kent  
Administrative Manager  
ETL Testing Laboratories, Inc.  
Industrial Park 3933 US Route 11  
PO Box 2040  
Cortland, NY 13045-0950  
Telephone: 607-753-6711

## CERTIFICATION GUIDELINES AND INTERPRETATIONS

For guidance in certifying safety glazing materials, the SGCC Certification Committee has adopted the following:

## GENERAL

G.1  
Participation in the Certification Program will be on a January 1 to June 30 and July 1 to December 31 basis.

G.2  
Tests for initial compliance of safety glazing materials to ANSI Z97.1-1984 and/or 16 CFR 1201 will be accepted from any testing laboratory approved by the SGCC Certification Committee.

G.3 (ANSI ONLY)  
Paragraph (1) Section 5.1.3 of ANSI Z97.1-1984 is intended to apply to laminated, wired and organic coated glass only. Paragraph (2) is intended to apply to tempered glass only. Paragraph (3) is intended to apply to plastics only. Paragraph (4) is intended to apply to any safety glazing material.

G.4  
For insulating glass units to be considered safety glazing material, each light in the construction must be of safety glazing material.

G.5  
The SGCC item number, when used as part of a permanent label, designates the name of the licensee (participant) and also the location of the manufacturing plant.

## G.6

- a) All test specimens, except prototype samples, must be marked with the correct SGCC permanent label prior to testing in order to be considered a valid sample. It is the responsibility of the licensee to ensure the specimens being represented to the Administrator's representative are properly labelled. The administrator shall construe the absence of a correct permanent label as a failure to comply with the specifications. In such case of noncompliance, Sections a, c, and e of G.11 shall be followed. (Revised 3/16/90)
- b) The laboratory shall verify that the label has the correct SGCC number, designation of the applicable specification(s) and CPSC categories, nominal thickness, and certified size designation (U or L).
- c) The testing laboratory is to advise the administrator of any specimen to which the correct SGCC permanent label is not affixed. The testing laboratory will be instructed by the administrator not to test but hold the sample.
- d) The administrator will inform the licensee of the situation and direct (by letter) the testing laboratory to commence testing no later than 30 days hence. Until that time the testing laboratory is instructed to make these specimens available to the licensee at their convenience (the specimens are to remain at the testing laboratory) in order that the licensee may point out or show them that in fact the SGCC permanent label is correct or agree that in fact the correct SGCC permanent label is not present. In cases of any dispute between the licensee and the testing laboratory the decision of the administrator shall be final. The licensee shall not mark specimens after receipt at the testing laboratory.

## (ANSI ONLY)

- e) As of July 1, 1985 the SGCC permanent label must contain ANSI Z97.1-1984 in order to be considered a correct permanent label for purposes of Guideline G.6.

## G.7 (ANSI ONLY)

Safety glazing materials for which certification is requested for indoor use only shall be subjected to the provisions of section 5.1 (impact tests) and 5.4 (aging tests) of ANSI Z97.1-1984 irrespective of the composition or construction of the glazing material. Like products and materials produced in the same manner as samples submitted for test shall be legibly and permanently marked in one corner with the words "Indoor Use Only" and the SGCC identification number.

## G.8 (ANSI ONLY)

After initial compliance with a sample size as stated in Paragraph 4.3, testing of other sizes which represent the sizes manufactured may be allowed, provided however that all sizes produced up to the size provided by Paragraph 4.3, ANSI Z97.1-1984 are exposed to selection for testing.

## G.8 (CPSC ONLY)

After initial compliance with a sample size as stated in Table 1, testing of other sizes which represent the sizes manufactured may be allowed, provided however that all sizes produced up to the size provided in the standard 16 CFR 1201 are exposed to selection for testing.

## G.9

Specimen sizes up to 34 inches by 77 inches shall be valid samples when independently obtained by the administrator for purposes of routine evaluation.

## G.10

In cases where the administrator samples and identifies specimens for routine evaluation of the licensee's premises or requests licensee's samples when none are available at the time of sampling:

- a) The licensee be permitted 6 weeks in which to effect delivery of said specimens to the administrator's designated testing laboratory.
- b) Failure to act as specified above shall be construed by the administrator as failure of the said specimens to comply with the specifications and the administrator shall act as provided for in license agreement A.6.

## G.11

In cases where a routine evaluation sample fails to comply with the specifications:

- a) Written notice and an invoice shall be sent to the licensee by the administrator stating that within 30 days from the date of such notice the licensee must submit a retest sample to the testing laboratory selected by the licensee with the concurrence of the Administrator.

Certification shall be removed if the sample and payment are not received within the allotted 30 days or if the sample submitted fails to comply with the specifications.

- b) Within 3 months the administrator shall obtain an additional random sample for evaluation (in addition to the routine evaluation sample obtained twice a year). The administrator shall be certain that this additional sample is of recent production.
- c) At the option of the administrator, specimens submitted under a) above shall be either prototype size and pattern or identical to those previously sampled and of recent production.
- d) Certification shall be removed if the additional random sample obtained in b) above fails to comply with the specifications.
- e) All costs related to G.11 are to be borne by the licensee.
- f) If the retest procedure is required, all routine inspections and sample selections will continue. However, routine testing for the next period will be suspended pending the outcome of the retest procedure. If the product is decertified, the prepaid fee for routine testing for the next period (but not the Administrative and Contingency fees) will be refunded.

## G.12

If a licensee who manufactures a certified product outside the United States and Canada feels that in a particular instance that he will be unable to act as provided for in paragraph a) of SGCC Guideline G.11, he should notify the administrator. The administrator will then contact the chairman of the certification committee for a decision as to what action is to be taken.

## G.13

In cases where a certified item is produced infrequently or in small quantities so as to make it difficult for the administrator to obtain routine evaluation samples, the licensee shall notify the administrator at least two weeks in advance of any production of such item.

## G.14

The semi-annual invoicing date for certification fees shall be April 1 and October 1 of each year and the administrator is instructed to take those steps necessary to remove certification from Licensees for failure of payment. (Modified 10/20/89)

The Administrator shall initiate de-certification procedures on products at a given Licensee's facility for failure to pay any monies due to SGCC within 60 days of invoice date. (Reference License Agreement A.2, A.7, A.12, and B.6.)



The invoice procedures will be as follows:

- a) Semi-Annual SGCC invoices will be mailed on or before April 1 and October 1 of each year. Payment is due May 1 and November 1 respectively.
- b) For all overdue invoices as of May 1 and November 1, a phone call will be made as a reminder and to insure the invoice was received by the Licensee. A letter will follow the phone call.
- c) For all overdue invoices as of May 15 and November 15, an overnight letter, return receipt requested, will be sent warning of de-certification if payment is not received within 15 days.
- d) Letters of de-certification will be sent certified mail fifteen (15) days from the mailing of the overnight letter if payment is not received. With de-certification, a Licensee will no longer be an SGCC participant and its certified products will no appear in the CPD.

G.15

In the situation where a licensee desires to recertify a product that previously had certification removed because of failure to comply with the specifications (label and thickness tolerances excepted), the product shall be routinely sampled four times during the first year. The costs involved shall be paid by the licensee.

G.16

The nominal thickness designations in SGCC authorized permanent labels for safety glazing materials may be shown in metric units. The thickness will be expressed in millimeters, limited to two decimal places, and will have the suffix "mm."

G.17

All safety glazing materials that are not symmetrical from surface to surface shall be impacted two specimens on one side and two specimens on the other side.

G.18

Certified and permanently labeled safety glazing materials such as laminated glass, wired glass, rigid plastic or organic coated glass may be cut into smaller pieces by a distributor or installer after manufacture and it is not practical for each such smaller piece to bear a manufacturer's permanent label when finally installed in a building. When this is the case, then the distributor or installer shall apply a permanent label to each piece, which states his name and certifies that he cut the piece from material that was properly labeled in accordance with the requirements of SGCC.

for the purpose of this guideline, a permanent label is defined as one that will remain permanently legible and would be destroyed in attempts to remove it from the product.

G.19 (Deleted 10/20/89)

G.20

For certification purposes a panel of glazing material composed of multiple components (such as leaded glass) may be tested and interpreted as a unit.

G.21

A preissued SGCC certification number shall be issued by the administrator upon receipt of a properly executed license agreement and a properly executed bond form in the amount of \$10,000. The preissued SGCC certification number, if not used by the licensee, will be terminated twelve months from the date of issue. The condition of the bond is such that if the licensee does not label any safety glazing material with the preissued certification number prior to formal certification then the bond shall be void.

G.22

In the case of wired glass (ANSI ONLY), plastics and organic coated glass certification of a patterned product may be extended to cover other patterns provided:

- a) The nominal thickness of the proposed alternate and all aspects other than pattern are the same as the certified product.
- b) The administrator of the certification program is provided with a copy of a prototype test from an approved laboratory, showing satisfactory compliance with the impact requirements of ANSI Z97.1-1984 and/or 16 CFR 1201 for each alternate pattern proposed.
- c) The certification committee is provided with a 6 by 6-inch sample of each proposed alternate for its record and file. This must be sent to the administrator of the certification program.

After admission under blanket certification covering patterned products, any such patterns available may be selected by the administrator for routine sampling and testing.

In the case where a routine evaluation sample covered under a blanket certification fails to comply with the specifications the situation requires that particular product be submitted for the retest sample required by Guideline G.11a and also that particular product be sampled by the administrator for the additional sample required by Guideline G.11b.

#### G.23

There may be instances when a production facility is temporarily inoperative. This could be caused by, but not limited to, equipment repair or replacement, labor difficulties, energy or material shortages or economic considerations. As a consequence, samples for routine testing may not be available for long periods. The licensee may desire to retain certification during the shutdown period. This shall be done as follows:

- a) Prior to or within 2 weeks after the shutdown, the licensee shall inform the SGCC administrator by certified mail.
- b) The SGCC administrator will immediately supply the licensee with test release bond forms for submission by the licensee. A separate bond shall be submitted for each certified product affected.
- c) Within 2 weeks after receipt of the bond forms, the licensee shall submit them to the SGCC administrator.
- d) During the period covered by the bond the licensee shall retain certification, contingent upon payment of normal certification fees and meeting all other licensee obligations. Bonds will terminate 90 days after acceptance by SGCC but may be renewed by the licensee any number of times. Renewal is an obligation of the licensee and requires all steps listed herein.
- e) Within one week after re-activation of the production facility the licensee shall 1) notify the SGCC administrator by certified mail and 2) submit samples from the first weeks production to an SGCC approved laboratory for testing. In cases where more than one certified product is produced with the same equipment, samples of each must be furnished for testing within the first month. These will be considered as the routine samples for retesting for the six months period during which they are submitted.
- f) Failure of the licensee to comply with any of the preceding shall be the basis for removal of certification from the affected products.

#### G.24

When a licensee's production equipment will not produce a size of 34 by 76 inches and the licensee wishes to certify a) a size whose smaller dimension exceeds 34 inches, material shall be tested whose smaller dimension is 34 inches or b) a size whose larger dimension exceeds 76 inches, material shall be tested whose larger dimension is 76 inches.

#### G.25 (ANSI ONLY)

When a licensee specifically and voluntarily desires to use a SGCC permanent label on their product that denotes compliance with ANSI Z97.1-1966, ANSI Z97.1-1972, ANSI Z97.1-1975, and ANSI Z97.1-1984 or combination thereof, that they notify SGCC in writing of the certified item that they desire to so mark. SGCC will, at the request of the licensee, conduct compliance tests to ANSI Z97.1-1966, ANSI Z97.1-1972, ANSI Z97.1-1975 and ANSI Z97.1-1984 or combination thereof. A single set of four test specimens will be impacted to determine impact test requirements of all standards. Upon successful completion of compliance tests the safety glazing materials are permanently labeled and listed in the SGCC certified products directory as having met the requirements of 1966, 1972, 1975 and 1984 versions or combination thereof the ANSI Z97.1 standard. Any costs involved shall be paid by the licensee.

#### G.26

Any label that can be removed intact shall not be considered permanent and is not acceptable to SGCC.

#### G.27

A licensee, by executing a supplementary license agreement, can elect to be in both ANSI Z97.1-1984 and 16 CFR 1201 programs under one SGCC number provided the licensee submits four specimens to be impact tested to ANSI Z97.1-1984 and one specimen to be impact tested to 16 CFR 1201 (all safety glazing materials that are not symmetrical from surface to surface, shall be impacted one specimen on one side and one specimen on the other side for 16 CFR 1201). If any one specimen of the composite sample fails, the entire composite sample will be considered to have failed to comply with both specifications.

#### G.28

The administrator shall construe noncompliance with thickness tolerance as a failure to comply with the specifications. In such cases of noncompliance, Sections a, c, and e of G.11 shall be followed.

#### G.29

For the purposes of certification, the thickness requirements of Specification ASTM C1036-85 shall apply.

## G.30

For certification purposes, the minimum thickness shall be 0.092 and the maximum thickness shall be 0.108 inches for 0.100 inch glass.

## G.31

For certification purposes, the nominal thickness of single strength patterned glass shall be 0.094 inches and thickness tolerances shall be plus 0.047 inches and minus 0.015 inches.

## G.32 (CPSC ONLY)

When testing to category II requirements, the administrator shall select specimens greater than 9 square feet in surface area.

## TEMPERED TRANSPARENT GLASS

## T.1

Certification of either flat glass or patterned glass will not cover the other except as noted in Guideline T.2. (Flat glass designates ground and polished plate, float and sheet glass.) Four specimens shall be used for impact testing as detailed at 16 CFR 1201.4(a)(1).

## T.2

Polished plate glass and the rough glass blank from which it is produced will be considered to be of equal nominal thickness. Certification of tempered flat glass will therefore be interpreted as including tempered rough plate blank.

## T.3

Certification of regular tempered glass will also cover tinted, heat absorbing and coated glasses of the same nominal thickness. Glasses of the same nominal thickness with a ceramic material applied as a continuous or partial coating to one or more surfaces prior to tempering are also covered.

## T.4

In cases where certified glass is normally not available for sampling, the licensee may make an overrun (of four lights of prototype size that are to be marked with the date of production) when the item is in normal production and these will be accepted by the administrator if other samples are not available. Otherwise, when production samples are not available, the administrator shall notify the licensee to submit prototype size samples to the administrator within six weeks.

## T.5

Certification of any nominal thickness of tempered safety plate, float or sheet glass will also cover the other two types. ANSI Z97.1-1984 and 16 CFR 1201 do not require the permanent label on tempered safety glass to specify which type of glass is used. Nor is it required that the test specimens be identified in this regard.

## T.6

Prototype test shall be conducted on bent specimens sampled from normal production run. The specimen size shall have a surface area of at least 50 percent of the maximum size for which certification is desired. Routine tests will be performed on bent specimens. The test apparatus shall be modified to clamp the vertical straight edges and to support the concave side of the curved edges. Impact shall be on the convex surface.

## TEMPERED PATTERNED GLASS

## TP.1

For the purposes of certification, the nominal thickness of patterned, figured, or rough rolled glass are the common fractions found in ASTM C1036-85. The permanent label must contain this fraction or a metric or decimal dimension within the tolerance of this thickness as published in ASTM C1036-85. Four specimens shall be used for impact testing as detailed at 16 CFR 1201.4(a)(1).

The patterns in each thickness will be classified as to the ratio of minimum to maximum thickness as follows:

Patterned depth class	Ratio
Shallow patterned glass	0.90 or above
Medium patterned glass	0.80 through 0.89
Deep patterned glass	0.79 or below

Certification will be by nominal thickness and patterned depth class. Any pattern in a certified thickness and patterned depth class is certified.

Certification of medium also covers shallow patterns of the same nominal thickness.

New or unlisted patterns must be submitted to the pattern subcommittee for classification and file, prior to certification. After measurement, the new pattern will be assigned to a patterned depth class.

Certification of deep also covers medium and shallow patterns of the same nominal thickness.

Certification of medium also covers shallow patterns of the same nominal thickness.

#### TP.2

The maximum thickness shall be recorded when measuring the thickness of patterned glass.

#### TP.3

For tempered patterned glass, one specimen must be weighed and the weight of ten square inches determined from the weight, width and height of that specimen to use for test purposes.

#### TP.4

For certification purposes, the nominal thickness of 210 tempered patterned glass shall be 0.210 inches and thickness tolerances shall be plus 0.031 inches and minus 0.016 inches.

#### TP.5

When medium patterned glass is not available for routine sampling, the licensee submitted specimens must be a medium pattern (a shallow pattern is not acceptable).

#### TP.6

When deep patterned glass is not available for routine sampling, the licensee submitted specimens must be a deep pattern (shallow or medium patterns are not acceptable).

### LAMINATED GLASS

#### L.1

Certification of regular laminated glass will also cover tinted, heat absorbing and coated glasses, and clear or tinted interlayer, both flat and bent of the same nominal thickness. Four specimens shall be used for impact testing as detailed at 16 CFR 1201.4(a)(1). (Revised 3/16/90)

#### L.2

In cases where certified laminated glass is normally not available for sampling the licensee may make an overrun (of four lights of prototype size that are to be marked with the date of production) when the item is in normal production and these will be accepted by the administrator if other samples are not available. Otherwise, when production samples are not available the administrator shall notify the licensee to submit prototype size samples to the administrator within six weeks.

#### L.3

Certification of 7/32 inch laminated glass also covers SS/DS and vice versa.

#### L.4

When a laminated glass is certified, other laminated glasses having the same thickness or thicknesses of glass and a greater thickness of plastic interlayer will be considered to be of equal nominal thickness and will be included in the certification.

#### L.5

Laminated safety glass need not be identified by type of base glass.

#### L.6

Thickness of the plastic interlayer shall be measured by the SGCC standard method.

#### L.7

For certification purposes the following thickness tolerances shall be used. Thickness tolerance shall apply only to the overall thickness. The plus tolerance shall be the sum of all the individual plus tolerances of each layer of the laminate. The minus tolerance shall be the sum of all of the individual minus tolerances of each layer of the laminate.

The tolerance of the plastic sheet interlayer shall be based on the nominal thickness of the interlayer with a plus tolerance of 0.002 and a minus tolerance of 0.004 inches.

The tolerance of resin cast interlayers shall be based on the nominal thickness of the interlayer with a plus tolerance of 0.015 and a minus tolerance of 0.005 inches. (Revised 3/16/90)

## L.8

When a laminated annealed glass is certified, other laminated glasses having the same thickness or thicknesses of heat strengthened or tempered glass and the same or greater thickness of plastic interlayer of the same chemical composition will be considered to be included in the certification.

## L.9

When laminated glass is not available for routine sampling, the licensee submitted specimens must contain the identical thickness plastic interlayer that was contained in the prototype specimens.

**WIRED GLASS (ANSI ONLY)**

## W.1

Certification of one polished wired glass may be applied to other polished wired glasses provided:

- a) The glass thickness of the candidate glass is nominally equal to the thickness of the glass that is certified.
- b) The wire diameter of the candidate glass is at least as great as the wire diameter in the glass that is certified.
- c) The spacing of the wires in the candidate glass is no greater than the spacing of the wires in the glass that is certified.
- d) SGCC has been presented with a test report indicating compliance of the candidate glass with the impact test requirements of ANSI Z97.1-1984.

After admission under the blanket certification covering wired glasses all wired glasses so certified must be exposed to random sampling at each examination although only one will probably be selected for testing.

**PLASTICS - GENERAL**

## P.1

Certification of one tint or color of rigid plastic will also cover other tints, colors, flat configurations or bent and formed configurations.

## P.1 - CPSC ONLY

One piece of at least one square foot area shall be used for testing the hardness and modulus of elasticity.

## P.2

For certifying all plastics covering a range of thicknesses, prototype impact tests are required of the minimum thickness and also of the maximum thickness (except that 0.250 inch thickness would be tested if the maximum thickness exceeds 0.250 inches). Only one certification number will be issued and shall be marked upon all thicknesses. Routine evaluation samples are to be selected by the administrator from any of the certified thicknesses.

## P.3

The following thickness tolerances shall be used for certification purposes:

Outdoor use plastic materials Class 1. Cast acrylic. (Including continuously cast sheet): As specified in Federal Specification LP-391, latest issue.

Outdoor use plastic materials Class 2. Extruded acrylic: As specified in Federal Specification LP-507, latest issue.

Outdoor use plastic materials Class 3. Extruded polycarbonate: As specified in Military Specification MIL-P-46144, latest issue.

Indoor use plastic materials Class 1: Plus or minus 10 percent of nominal thickness.

## P.4

The maximum thickness shall be recorded when measuring the thickness of patterned plastics.

## P.5

Certification of either smooth plastic or patterned plastic will not cover the other.



**PLASTICS - EXTERIOR USE****PE.1 (ANSI ONLY)**

Sheet plastics for exterior use must comply with the applicable specification.

**PE.1 (CPSC Only)**

Sheet plastics for exterior use must comply with 16 CFR 1201.4(e)(2)(ii)(A) accelerated weathering test Table 1 or simulated weathering test. The equipment shall be an apparatus commercially known as a "Weather-Ometer" or its function equivalent incorporating a carbon-arc. It shall be operated in accordance with "Standard Recommended Practice for Operating Light-and-Water-Exposure Apparatus (Carbon-Arc Type) for Exposure of Nonmetallic Materials," ASTM G 23069, March 21, 1969, as augmented for plastics (for plastic test specimens only) by "Standard Recommended Practice for Operating Light-and-Water-Exposure Apparatus (Carbon-Arc Type) for Exposure of Plastics," ASTM D 1499-64, August 31, 1964. Specimens shall be mounted and control specimens shall be used in the manner specified in the Standard at section 1201.4(d)(2)(ii)(A) or (B), as appropriate. An appropriate water spray cycle shall be used. The specimens shall be exposed in the Weather-Ometer for a period of time which, irradiation equivalent to the accumulated ultraviolet irradiation of 2,000 plus or minus 1 hours of exposure in a twin enclosed carbon-arc Weather-Ometer. Evaluate the test results by using the test criteria set forth in the Standard at section 1201.4(e)(2)(ii)(A) or (B), as appropriate.

Intensified weathering test. The test equipment shall be the Equatorial Mount with Mirrors for Acceleration with Water, such as that found at the Desert Sunshine Exposure Tests, Inc. near Phoenix, Arizona. It shall be operated in accordance with "Standard Recommended Practice for Operating EMMA (QUA)R - A Fresnel-Concentrator Accelerated Weathering Machine Employing Natural Sunshine as Source," ASTM draft standard dated October 1, 1976. The standard water spray cycle of eight minutes on followed by 52 minutes off shall be used. Mounting of specimens and use of control specimens shall be specified in the Standard at section 1201.4(d)(2)(ii)(A) or (B), as appropriate. The specimens shall be exposed to 375,000 plus or minus 10,000 langley (375 plus or minus 10 kilo-calories per square centimeter) or irradiation. Evaluate the test results by using the test criteria set forth in the Standard at section 1201.4(e)(2)(ii)(A) or (B), as appropriate.

Outdoor weather test. The specimens shall be exposed in outdoor exposure test racks set facing the equator at an angle from the horizontal equal to the latitude of the exposure site. The specimens shall be exposed to 375,000 plus or minus 10,000 langley (375 plus or minus 10 kilo-calories per square centimeter) or irradiation. Mounting of specimens and use of control specimens shall be as specified in the Standard at section 1201.4(d)(2)(ii)(A) or (B), as appropriate. Evaluate the test results by using the test 1201.4(d)(2)(ii)(A) or (B), as appropriate.

**PE.2 (ANSI ONLY)**

Certification of plastics for exterior use shall be permitted prior to completion of ANSI Z97.1-1984 weathering tests (paragraph 5.3) provided that a considered expert opinion states that the infrared spectrogram indicates that the plastic is an acrylic or UV inhibited polycarbonate of proven weatherability. Certification shall be removed if compliance with the weathering test is not demonstrated within six months of the certification date.

**PE.3**

For all plastics requiring UV weathering tests an infrared spectrogram shall be obtained of all prototype weathering specimens. An infrared spectrogram shall be obtained of all routine evaluation samples and shall be compared with that of the prototype in lieu of conducting weathering test. The spectral scan shall be made using a minimum film thickness of 0.002 inches or its equivalent.

**PE.4**

When initial Charpy unnotched specimens do not break, then notched specimens shall be used for both initial and exposed Charpy impact testing. The specimens shall be notched prior to UV exposure and the notched surface shall be exposed to the UV.

**PLASTICS - INDOOR USE ONLY****PI.1 (ANSI ONLY)**

Sheet plastics used in indoor applications only, do not have to comply with paragraph 5.3 of ANSI Z97.1-1984 (UV Weathering) but must comply with paragraph 5.4.

**PI.1 (CPSC ONLY)**

Sheet plastics used in indoor applications only, must comply with Table 1 in 16 CFR 1201.

**PI.2**

The permanent label authorized by SGCC must include "Indoor Use Only."

## PI.3

For all indoor plastics requiring aging tests, an infrared spectrogram shall be obtained of all prototype aging specimens. An infrared spectrogram shall be obtained of all routine re-evaluation samples and shall be compared with that of the prototype in lieu of conducting aging tests. The spectral scan shall be made using a minimum film thickness of 0.002 inches or its equivalent.

## LEADED PATTERNED ANNEALED GLASS - (ANSI ONLY)

## LG.1

Certification of one leaded patterned glass (annealed) may be extended to cover other patterns (on the glass surface) provided:

- a) The nominal thickness of the proposed alternate and all aspects other than pattern are the same as the certified product.
- b) The administrator of the certification program is provided with a copy of a prototype test from an approved laboratory, showing satisfactory compliance with the impact requirements of ANSI Z97.1-1984 for each alternate pattern proposed.
- c) The certification committee is provided with a 6 by 6 inch sample of each proposed alternate for its record and file. This must be sent to the administrator of the certification program.
- d) After admission under blanket certification covering leaded patterned glass (annealed), any such patterns available may be selected by the administrator for routine sampling.

## LG.2

Certification of one diamond shaped leaded patterned glass (annealed) may be extended to cover other sizes of diamonds provided:

- a) All aspects of the product except diamond size is the same as the certified product.
- b) The administrator of the certification program is provided with a copy of a prototype test from an approved laboratory, showing satisfactory compliance with the impact requirements of ANSI Z97.1-1984 for each alternate size diamond proposed.
- c) The certification committee is provided with a 6 by 6 inch or a proper and representative sample of each proposed alternate for its record and file. This must be sent to the administrator of the certification program.

After admission under blanket certification, any such size diamond available may be selected by the administrator for routine testing.

## LG.3

For leaded diamond patterned glass (annealed) the tolerance for diagonal came center dimensions shall be plus or minus 12 percent.

Prototype samples must have diagonal came center dimensions 10 percent greater than nominal. Diamond size listed in the certified products directory shall be nominal dimensions.

## ORGANIC COATED GLASS

## AG.1

Thickness of the applied plastic coating shall be measured by the SGCC standard method. Four specimens shall be used for impact testing as detailed at 16 CFR 1201.4(a)(1).

## AG.2

The SGCC authorized permanent label, which complies with Guideline G.26 must be imprinted upon or applied to a surface of the plastic for all plastic coated annealed glasses.

## (ANSI ONLY)

Prototype test shall be conducted on bent specimens of the surface area at least 50 percent of the maximum size for which certification is desired. Routine tests may be conducted on flat or bent specimens. The test apparatus shall be modified to clamp the vertical straight edges and to support the concave side for the curved edges. Two specimens shall have organic coating on the concave surface and two on the convex surface. Impact shall be on the convex surface.

## SGCC LABEL REQUIREMENTS

## GENERAL

Unless the SGCC certification label is permanently affixed to each piece of safety glazing material, it is not covered by the SGCC certification program.

The permanent labels illustrated elsewhere in this certified products directory are examples of some of those found on safety glazing materials certified by SGCC.

The permanent label must contain the correct SGCC number, ANSI Z97.1-1984 and/or 16 CFR 1201 (and category). The nominal thickness and the letter U or L indicating certified size.

For labeling purposes, a line of demarcation shall separate those specifications covered by the SGCC number from any other specifications the licensee may wish to reference.

For purposes of Guideline G.6 "SGCC-xxx/yyy" shall be the only correct designation other than "SGCC-xxx" and "SGCC-yyy" when an identical item is in both the ANSI and CPSC programs per the following examples:

## EXAMPLES:

ANSI Z97.1-1984  
16 CFR 1201 II  
SGCC-123/691 1/4 U

ANSI Z97.1-1984 SGCC - 123 1/4 U  
16 CFR 1201 II SGCC-691

The permanent label must be affixed to certified products only at the time and place of manufacture.

The permanent label must be affixed only to safety glazing materials, of the licensee's own manufacture, which are certified in the SGCC certification program.

The permanent label must not be sold, transferred or otherwise disposed of in any manner other than being affixed to the licensee's certified production.

The permanent label must not be affixed to any product from which certification has been withdrawn or which is produced with a process basically different from the one used to manufacture the initial or prototype samples.

## ANSI (ONLY)

"After having successfully passed the appropriate tests, like products and materials produced in the same manner as samples submitted per test shall be legibly and permanently marked in one corner with.....the characters "ANSI Z97.1-1984 - INDOOR USE ONLY" and shall be marked also with the manufacturer's distinctive mark or designation." Quoted from ANSI Z97.1-1984.

"Organic-coated glass materials shall be permanently marked on the organic coating with a label, including the phrase, "GLAZE THIS SIDE IN" to indicate to the installer, inspector or user which side of the organic-coated glass should be exposed to the elements if there is a specific side that should be exposed." Quoted from ANSI Z97.1-1984.

## CPSC (ONLY)

"Any glazing material that for accelerated environmental durability tests meets only the requirements of 1201.4 (e)(ii)(c) entitled "Plastic (indoor service)" shall bear the statement "INDOOR USE ONLY" as a part of the permanent label." Quoted from 16 CFR 1201.

"Organic-coated glass that has been tested for environmental exposure from one side only must bear a permanent label on the coating stating "GLAZE THIS SIDE IN" and shall bear in the central 50 percent of the surface in letters at least 1/4" inch high: "SEE PERMANENT LABEL FOR IMPORTANT MOUNTING INSTRUCTIONS." The latter message shall be attached to either side of the glazing by any means which shall ensure the message will remain in place until installation." Quoted from 16 CFR 1201.

## CPS ACT LABELING REQUIREMENTS

The following information is provided for the guidance of the licensee and is not a requirement of the SGCC certification program.

The Consumer Product Safety Act defines a private labeler and permits private labeling as long as a manufacturer is identified, which can be in code. A "private labeler" means an owner of a brand or trademark on the label of a consumer product which bears a private label.

Per CPSC Advisory Opinion, dated April 12, 1984, a label on the material or product is acceptable as a certificate of compliance meeting the requirements of the CPSC if the label contains the same information required of a certificate of compliance. This information must include the date of manufacture, the place of manufacture, and the name of the manufacturer, importer, or private labeler. The certificate of compliance may also be a separate document which accompanies the material or product or is otherwise furnished to each distributor or retailer.

With respect to the CPSC requirement that the certificate of compliance name the manufacturer, a label meets that requirement if it includes a suitable identification of the manufacturer of the product (unless the product bears a private label), in which case it shall identify the private labeler and shall also contain a code mark which shall permit the seller of such product to identify the manufacturer thereof to the purchaser upon his request.

As set forth in SGCC certification guideline G.5, the SGCC number designates the name of the licensee and also the location of the manufacturing plant; however, it does not designate the date of manufacture.

CLASSIFIED TEMPERED GLASS PATTERNS1/8 inch shallow

(01) P-516	(02) Luxlite	(03) Factrolite	(09) Spraylite	(32) Muralex
(34) Velvex	(36) Ribbed	(37) Aquatex	(38) Finetex	(39) Industrex
(82) Pattern 62	(83) Pointex	(86) Showerlite	(87) Heliolite	(117) Solatex
(120) Sunadex	(147) Solatex I	(150) Solatex II	(168) Pattern 50	

1/8 inch medium

(04) Rattan	(05) Cotswold	(06) Patchwork	(07) Burlap	(08) Smooth Rough
(11) Flemish	(31) Skytex	(33) Seashell	(35) Flax	(52) Pattern 73
(56) Syenite	(57) Pattern 229	(154) Rain	(160) Model 10	(163) Model 11
(164) Model 12	(165) Spotswood	(167) Leaf		

1/8 inch deep

(10) Autumn

5/32 inch shallow

(59) Luxlite	(60) Factrolite	(64) Spraylite	(70) Muralex	(72) Velvex
(74) Ribbed	(75) Aquatex	(76) Finetex	(81) Pattern 6	(88) Pattern 100
(118) Solatex	(121) Sunadex	(123) P-516	(124) Heliolite	(126) Pattern 62
(127) Mistron Ace	(128) Showerlite	(148) Solatex I	(151) Solatex II	(153) Flax
(156) Clar 104	(157) Model 10	(158) Pontilhado	(161) Model 11	(162) Model 12

5/32 inch medium

(61) Cotswold	(62) Burlap	(63) Smooth Rough	(66) Flemish	(69) Skytex
(71) Seashell	(73) Flax	(77) Pattern 73	(78) Syenite	(79) Pattern 229
(80) Pattern 76	(130) Cathedral	(146) Pattern 28	(155) Rain	

5/32 inch deep

(65) Autumn	(67) Oceanic	(68) Roundel
-------------	--------------	--------------

3/16 inch shallow

(50) Pattern 62	(51) P-516	(54) Showerlite	(116) Heliolite	(119) Solatex
(122) Sunadex	(125) Spraylite	(131) Industrex	(132) Velvex	(133) Aquatex
(134) Pattern 100	(135) Pattern 6	(136) Burlap	(137) Factrolite	(138) Satinlite
(139) Pluralite	(140) Flax	(141) Skytex	(142) Chinchilla	(149) Solatex I
(152) Solatex II	(159) Model 10			

3/16 inch medium

(58) Pattern 76	(143) Seashell	(144) Syenite	(145) Flemish
-----------------	----------------	---------------	---------------

3/16 inch deep

(12) Oceanic	(13) Roundel	(41) Lozenge
--------------	--------------	--------------

210 inch shallow

(89) Velvex	(90) Muralex	(91) Industrex	(92) Aquatex	(93) Pattern 100
(94) Pattern 6	(95) Pattern 62	(96) Spraylite	(97) Burlap	(98) Factrolite
(99) Satinlite	(100) Luxlite	(101) J-3	(102) P-516	(103) Smooth Rough
(105) Cascade	(106) Pluralite	(108) Flax	(110) Skytex	(115) Chinchilla
(166) Spotswood				

210 inch medium

(107) Seashell	(109) Beadex	(111) Syenite	(112) Flemish	(113) Textured Linex
----------------	--------------	---------------	---------------	----------------------

210 inch deep

(104) Lozenge	(114) Broadlite
---------------	-----------------

7/32 inch shallow

(14) Velvex	(15) Muralex	(16) Industrex	(17) Aquatex	(18) Pattern 100
(19) Pattern 6	(20) Pattern 62	(21) Spraylite	(22) Burlap	(23) Factrolite
(24) Satinlite	(25) Luxlite	(26) J-3	(27) P-516	(28) Smooth Rough
(30) Cascade	(42) Pluralite	(44) Flax	(46) Skytex	(55) Textured Plate
(84) Chinchilla	(129) Orange Peel			

7/32 inch medium

(43) Seashell	(45) Beadex	(47) Syenite	(48) Flemish	(49) Textured Linex
---------------	-------------	--------------	--------------	---------------------

7/32 inch deep

(29) Lozenge	(53) Boardlite
--------------	----------------



<u>SGCC NO.</u>	<u>SGCC NO.</u>	<u>SGCC NO.</u>
12 Virginia Glass Products	712 Falconer Glass Industries	1165 Colonial Mirror & Glass
14 Virginia Glass Products	862 Tempered Glass, Inc	1166 Colonial Mirror & Glass
24 AFG Industries	863 Tempered Glass, Inc	1167 Colonial Mirror & Glass
28 AFG Industries	865 Tempered Glass, Inc	1173 Safelite Glass Corp - ANSI
40 Guardian Industries - ANSI	866 Tempered Glass, Inc	1200 Hamilton Glass Products
54 Hamilton Glass Products	933 Guardian Industries - ANSI	1201 Gemtron Corp
57 Hamilton Glass Products	934 Guardian Industries - ANSI	1216 Guardian Fabrication - ANSI
64 PPG Industries	935 Downey Glass Co	1219 Tempglass Southern, Inc
70 PPG Industries	949 AFG Industries	1225 ACI Glass Products Inc - ANSI
89 AFG Industries	955 AFG Industries	1226 ACI Glass
90 AFG Industries	968 Guardian Industries - ANSI	1230 American Flat Glass Distrib
93 Virginia Glass Products	969 Guardian Industries - ANSI	1231 American Flat Glass Distrib
94 Virginia Glass Products	970 Guardian Industries - ANSI	1232 American Flat Glass Distrib
95 Virginia Glass Products	971 Guardian Industries - ANSI	1235 Guardian Fabrication - ANSI
118 Flex-O-Glass, Inc	979 Tempglass Eastern, Inc	1248 Guardian Industries - ANSI
131 Guardian Industries - ANSI	981 Tempglass Eastern, Inc	1249 Guardian Industries - ANSI
185 U S Precision Glass	982 Tempglass Eastern, Inc	1250 Guardian Industries - ANSI
186 U S Precision Glass	986 Temp-Tech Industries, Inc	1251 Guardian Industries - ANSI
188 U S Precision Glass - ANSI	999 Anglass Industries - ANSI	1253 Guardian Industries - ANSI
220 AFG Industries	1000 Anglass Industries - ANSI	1259 Tempglass Eastern, Inc
249 PPG Industries	1034 Shaw Glass Co Inc	1275 Virginia Glass Products
250 PPG Industries	1035 Shaw Glass Co Inc	1280 Falconer Glass Industries
295 PPG Industries	1036 Shaw Glass Co Inc	1281 U S Precision Glass
300 Guardian Fabrication - ANSI	1037 Shaw Glass Co Inc	1282 Falconer-Lewistown - ANSI
328 U S Precision Glass - ANSI	1039 Tempglass, Inc	1284 Falconer-Lewistown - ANSI
337 Tempered Glass Corp	1041 Ardco, Inc	1286 U S Precision Glass
338 Tempered Glass Corp	1042 Ardco, Inc	1287 U S Precision Glass
348 Tempered Glass Corp	1044 Tempglass Southern, Inc	1299 Shaw Glass Co Inc
382 PPG Industries - ANSI	1045 Tempglass Southern, Inc	1304 Guardian Industries - ANSI
400 ACI Glass Products Inc	1046 Tempglass Southern, Inc	1308 TRACO (Three Rivers Alum.)
402 ACI Glass Products Inc	1050 U S Precision Glass	1310 TRACO (Three Rivers Alum.)
458 Guardian Industries - ANSI	1058 Tempglass Eastern, Inc	1311 TRACO (Three Rivers Alum.)
471 Guardian Fabrication - ANSI	1059 Tempglass Eastern, Inc	1315 Falconer-Lewistown - ANSI
487 Guardian Industries - ANSI	1062 Hehr Glass Co	1316 Falconer-Lewistown - ANSI
514 Downey Glass Co	1073 Spectrum Glass Prods - ANSI	1318 Guardian Industries - ANSI
515 Downey Glass Co	1074 Spectrum Glass Prods - ANSI	1329 Tempered Glass Corp
516 Downey Glass Co	1075 Spectrum Glass Prods - ANSI	1332 Gemtron Corp
520 Anglass Industries - ANSI	1076 Spectrum Glass Prods - ANSI	1334 Gemtron Corp
562 U S Precision Glass - ANSI	1077 Spectrum Glass Prods - ANSI	1355 Guardian Fabrication
587 AFG Industries	1080 Spectrum Glass Prods - CPSC	1356 Guardian Fabrication
592 Tempglass, Inc	1081 Spectrum Glass Prods - CPSC	1357 Guardian Fabrication
594 Tempglass, Inc	1082 Spectrum Glass Prods - CPSC	1358 Guardian Fabrication
595 Tempglass, Inc	1083 Spectrum Glass Prods - CPSC	1359 Guardian Fabrication
598 AFG Industries	1084 Spectrum Glass Prods - CPSC	1360 Safelite Glass Corp
630 Downey Glass Co	1107 ACI Glass Products Inc - ANSI	1361 SPI Glass Corp
631 Guardian Industries - ANSI	1108 ACI Glass Products Inc - ANSI	1362 SPI Glass Corp
633 Guardian Industries - ANSI	1110 PPG Industries	1363 SPI Glass Corp
640 ACI Glass	1111 PPG Industries	1369 U S Precision Glass
654 U S Precision Glass - ANSI	1112 PPG Industries	1370 U S Precision Glass
662 Guardian Fabrication - ANSI	1113 PPG Industries - ANSI	1371 U S Precision Glass
675 PPG Industries	1118 Tempered Glass Corp	1372 U S Precision Glass
676 PPG Industries	1139 AFG Industries	1374 SPI Glass Corp
678 Downey Glass Co	1143 AFG Industries	1379 HGP Architectural Glass
709 Falconer Glass Industries	1157 ACI Glass	1380 HGP Architectural Glass
711 Falconer Glass Industries	1161 Guardian Industries - ANSI	1381 Glasstemp, Inc.

<u>SGCC NO.</u>	<u>SGCC NO.</u>	<u>SGCC NO.</u>
1382 Glasstemp, Inc.	1483 Hankuk Glass Ind - ANSI	1578 Milgard Tempering Inc
1383 Glasstemp, Inc.	1485 AFG Glass Inc	1586 Taylor Products, Inc.
1384 Glasstemp, Inc.	1486 AFG Glass Inc	1587 Taylor Products, Inc.
1385 Hamilton Glass Products	1487 AFG Glass Inc	1588 Taylor Products, Inc.
1386 Hamilton Glass Products	1489 AFG Glass Inc	1589 Taylor Products, Inc.
1387 Hamilton Glass Products	1494 ACI Glass Products	1590 Free State Glass Industries
1388 U S Precision Glass - ANSI	1495 ACI Glass Products	1591 Free State Glass Industries
1390 AFG Industries	1496 ACI Glass Products	1592 Free State Glass Industries
1393 Saint Gobain - ANSI	1497 ACI Glass Products	1593 Free State Glass Industries
1394 Guardian Fabrication	1498 ACI Glass Products	1594 Free State Glass Industries
1395 Tempered Glass Corp	1508 Viracon, Inc	1595 Hoffer's, Inc.
1398 Empire Glass, Inc	1509 Viracon, Inc	1596 Hoffer's, Inc.
1399 Empire Glass, Inc	1510 Hehr Glass Co	1597 Hoffer's, Inc.
1400 Empire Glass, Inc	1514 Hehr Glass Co	1598 Taylor Products, Inc.
1401 Empire Glass, Inc	1517 Hehr Glass Co	1602 Hehr Glass Co - ANSI
1402 Empire Glass, Inc	1518 American Flat Glass Distrib	1603 PPG Industries
1403 Viracon, Inc	1519 American Flat Glass Distrib	1604 PPG Industries
1404 Viracon, Inc	1520 American Flat Glass Distrib	1605 PPG Industries
1405 American Flat Glass Distrib	1521 American Flat Glass Distrib	1606 PPG Industries
1406 American Flat Glass Distrib	1522 American Flat Glass Distrib	1607 Guardian Fabrication - ANSI
1413 Hankuk Glass Ind - ANSI	1523 American Flat Glass Distrib	1608 Downey Glass Co
1414 AFG Industries	1524 American Flat Glass Distrib	1609 Downey Glass Co
1415 American Flat Glass Distrib	1526 Arch Tempered Glass - ANSI	1611 Downey Glass Co
1416 Nashville Tempered Glass	1527 Arch Tempered Glass - ANSI	1616 Guardian Fabrication
1417 Nashville Tempered Glass	1528 Arch Tempered Glass - ANSI	1617 Sunbelt Glass, Inc
1420 Tempglass, Inc	1529 Arch Tempered Glass - ANSI	1618 Sunbelt Glass, Inc
1421 HGP Architectural Glass	1530 Arch Tempered Glass - ANSI	1621 Solar Seal South
1422 Gemtron Corp	1531 Arch Tempered Glass - ANSI	1622 Solar Seal South
1424 Gemtron Corp	1533 Glasstemp, Inc.	1624 AFG Industries
1426 Gemtron Corp	1535 ACI Glass	1627 Falconer-Lewistown
1428 American Flat Glass Distrib	1536 Glasstemp, Inc.	1628 Falconer-Lewistown
1429 O & W Glass Ind	1545 Falconer Glass Industries	1629 Falconer-Lewistown
1436 AFG Industries	1546 Floral Glass & Mirror	1630 Guardian Industries - ANSI
1441 Sumitec, Inc. - ANSI	1547 Floral Glass & Mirror	1631 Guardian Industries - ANSI
1448 HGP Architectural Glass	1548 Floral Glass & Mirror	1632 Guardian Industries - ANSI
1452 U S Precision Glass	1549 Floral Glass & Mirror	1633 Guardian Industries - ANSI
1453 Sunbelt Glass, Inc	1550 Floral Glass & Mirror	1634 Guardian Industries - ANSI
1454 Sunbelt Glass, Inc	1551 Floral Glass & Mirror	1635 Guardian Industries - ANSI
1455 Sunbelt Glass, Inc	1552 Floral Glass & Mirror	1636 Viracon, Inc
1456 Sunbelt Glass, Inc	1553 Floral Glass & Mirror	1637 Viracon, Inc
1457 Sunbelt Glass, Inc	1555 Swift Glass Co., Inc.	1638 Northwestern Industries
1458 The Glass Factory	1556 Swift Glass Co., Inc.	1639 Northwestern Industries
1459 The Glass Factory	1557 Swift Glass Co., Inc.	1640 Northwestern Industries
1460 The Glass Factory	1558 Swift Glass Co., Inc.	1641 AFG Industries
1461 The Glass Factory	1559 Swift Glass Co., Inc.	1642 ACI Glass
1462 Guardian Industries - ANSI	1562 Arch Tempered Glass - ANSI	1643 ACI Glass
1463 Guardian Industries - ANSI	1563 Ardco, Inc	1644 ACI Glass
1464 Guardian Industries - ANSI	1564 Ardco, Inc	1645 ACI Glass
1467 Nashville Tempered Glass	1565 Ardco, Inc	1646 Hehr Glass Co
1476 Viracon, Inc	1571 Viracon West	1647 Pan Lam Industries
1477 Gemtron Corp	1572 Viracon West	1649 Tempglass Southern, Inc
1479 Hankuk Glass Ind - ANSI	1574 Guardian Fabrication - ANSI	1651 Macdonald Mirror
1480 Hankuk Glass Ind - ANSI	1575 Guardian Fabrication - ANSI	1652 Laminated Glass Corp
1481 Hankuk Glass Ind - ANSI	1576 Guardian Fabrication - ANSI	1653 D & S Tempered Glass
1482 Hankuk Glass Ind - ANSI	1577 Guardian Fabrication - ANSI	1654 D & S Tempered Glass

<u>SGCC NO.</u>	<u>SGCC NO.</u>	<u>SGCC NO.</u>
1655 D & S Tempered Glass	1715 U S Precision Glass	1770 Asahi Glass Co LTD
1656 D & S Tempered Glass	1716 Spectrum Glass Prods - ANSI	1771 Tempglass Eastern, Inc
1657 D & S Tempered Glass	1717 Spectrum Glass Prods - CPSC	1772 Tempglass Eastern, Inc
1658 D & S Tempered Glass	1718 Spectrum Glass Prods - ANSI	1773 Tempglass Eastern, Inc
1659 D & S Tempered Glass	1719 Spectrum Glass Prods - CPSC	1778 Viracon, Inc
1660 D & S Tempered Glass	1721 Donnelly Corp	1779 ACI Glass
1661 D & S Tempered Glass	1723 Marvin Windows	1780 Cameron Glass Inc
1663 AFG Industries	1724 Marvin Windows	1781 Sterling Plumbing Group
1664 AFG Industries	1728 ACI Glass Products Inc - ANSI	1782 All Team Glass & Mirror Ltd
1665 Guardian Industries - ANSI	1730 Hehr Glass Co - ANSI	1783 Thermaglas Inc
1666 Safelite Glass Corp	1732 Coraglass Inc	1784 Perilstein Distributing Corp
1667 Builders & Decorators - ANSI	1733 Coraglass Inc	1785 Perilstein Distributing Corp
1668 Globe-Amerada	1736 Cameron Glass Inc	1786 Perilstein Distributing Corp
1669 Indepent Insulating Glass Co	1737 Guardian Industries - ANSI	1787 Perilstein Distributing Corp
1670 Indepent Insulating Glass Co	1738 Thermaglas Inc	1788 Perilstein Distributing Corp
1676 Contour Industries	1739 Thermaglas Inc	1789 Perilstein Distributing Corp
1677 Contour Industries	1740 Thermaglas Inc	1790 Perilstein Distributing Corp
1678 Contour Industries	1741 Thermaglas Inc	1791 Four Seasons Solar Products
1680 Contour Industries	1744 Tempglass Miami	1792 Shaw Glass Co Inc
1682 Arch Tempered Glass - ANSI	1745 Tempglass Miami	1793 Shaw Glass Co Inc
1683 Guardian Industries - ANSI	1746 Tempglass Miami	1794 AFG Industries
1684 Free State Glass Industries	1747 Tempglass Miami	1795 AFG Industries
1687 Donnelly Corp	1749 Cameron Glass Inc	1796 Hoffer's, Inc.
1688 Donnelly Corp	1751 Viracon West	1797 Hoffer's, Inc.
1689 Marvin Windows	1752 Viracon West	1798 Hoffer's, Inc.
1690 Marvin Windows	1753 Viracon West	1799 Northwest Aluminum Products
1691 Marvin Windows	1754 All Team Glass & Mirror Ltd	1800 Northwest Aluminum Products
1699 Sumitec, Inc. - ANSI	1755 All Team Glass & Mirror Ltd	1801 Northwest Aluminum Products
1700 Tempglass Southern, Inc	1756 All Team Glass & Mirror Ltd	1802 Northwest Aluminum Products
1701 Marvin Windows	1757 All Team Glass & Mirror Ltd	1803 Guardian Industries - ANSI
1702 AFG Industries Inc	1758 All Team Glass & Mirror Ltd	1804 Cardinal TG - CPSC
1703 AFG Industries Inc	1759 Sterling Plumbing Group	1805 Cardinal TG - CPSC
1704 AFG Industries Inc	1760 Sterling Plumbing Group	1806 Cardinal TG - CPSC
1705 AFG Industries Inc	1761 Sterling Plumbing Group	1807 Cardinal TG - CPSC
1706 American Flat Glass Distrib	1762 Sterling Plumbing Group	1808 Glasstemp, Inc.
1708 American Flat Glass Dist	1763 Cameron Glass Inc	1809 Glasstemp, Inc.
1709 American Flat Glass Dist	1764 Viracon, Inc	1810 American Flat Glass Distrib
1710 American Flat Glass Dist	1765 Arch Aluminum & Glass Co**	1811 Laminated Glass Corp
1711 American Flat Glass Dist	1766 Arch Aluminum & Glass Co**	1812 SPI Glass Corp
1712 American Flat Glass Dist	1767 Arch Aluminum & Glass Co**	
1713 American Flat Glass Dist	1768 Arch Aluminum & Glass Co**	
1714 American Flat Glass Dist	1769 Arch Aluminum & Glass Co**	

SGCC NO.	INCH	(MM)	TYPE	MAX. SIZE CERTIFIED	SGCC NO.	INCH	(MM)	TYPE	MAX. SIZE CERTIFIED
<b>ACI GLASS; GREENSBORO, NC</b>					<b>AFG GLASS INC; CONCORD, ONTARIO, CANADA</b>				
1642	3/16	( 5.0)	TTG	U	1485	1/8	( 3.0)	TTG	U
1643	1/4	( 6.0)	TTG	U	1486	5/32	( 4.0)	TTG	U
1644	3/8	(10.0)	TTG	U	1487	3/16	( 5.0)	TTG	U
1645	1/2	(12.0)	TTG	U	1489	1/4	( 6.0)	TTG	U
<b>ACI GLASS PRODUCTS INC; DALLAS, TX</b>					<b>ALL TEAM GLASS &amp; MIRROR LTD; WOODBRIDGE, ONTARIO, CANADA</b>				
				<b>ANSI ONLY</b>	1754	5/32	( 4.0)	TTG	U
1107	3/8	(10.0)	TTG	U	1755	3/16	( 5.0)	TTG	U
1108	1/2	(12.0)	TTG	U	1756	1/4	( 6.0)	TTG	U
1225	3/4	(19.0)	TTG	U	1757	3/8	(10.0)	TTG	U
1728	3/16	( 5.0)	TPG(S)	U	1758	1/2	(12.0)	TTG	U
<b>ACI GLASS PRODUCTS INC; DALLAS, TX</b>					1782	3/4	(19.0)	TTG	U
400	3/16	( 5.0)	TTG	U	<b>AMERICAN FLAT GLASS DIST; ALVARADO, TX</b>				
402	1/4	( 6.0)	TTG	U	1708	1/8	( 3.0)	TTG	U
<b>ACI GLASS PRODUCTS; SANTA CLARA, CA</b>					1709	3/16	( 5.0)	TTG	U
1494	3/16	( 5.0)	TTG	U	1710	1/4	( 6.0)	TTG	U
1496	1/4	( 6.0)	TTG	U	1711	3/8	(10.0)	TTG	U
1497	3/8	(10.0)	TTG	U	1712	1/2	(12.0)	TTG	U
1498	1/2	(12.0)	TTG	U	1713	5/32	( 4.0)	TPG(S)	U
1495	7/32	( 5.6)	TPG(S)	U	1714	3/16	( 5.0)	TPG(S)	U
<b>ACI GLASS PRODUCTS INC; SANTA FE SPRINGS, CA</b>					<b>AMERICAN FLAT GLASS DIST; FALL RIVER, MA</b>				
1157	3/16	( 5.0)	TTG	U	1518	1/8	( 3.0)	TTG	U
1535	1/4	( 6.0)	TTG	U	1519	3/16	( 5.0)	TTG	U
1779	3/8	(10.0)	TTG	U	1520	1/4	( 6.0)	TTG	U
640	1/2	(12.0)	TTG	U	1521	3/8	(10.0)	TTG	U
1226	1/8	( 3.0)	TPG(S)	U	1522	1/2	(12.0)	TTG	U
<b>AFG INDS INC; BRIDGEPORT, WV</b>					1524	5/32	( 4.0)	TPG(S)	U
1436	1/8	( 3.0)	TTG	U	1523	3/16	( 4.8)	TPG(S)	U
1624	5/32	( 4.0)	TTG	U	<b>AMERICAN FLAT GLASS DIST; MARIETTA, GA</b>				
1795	3/16	( 5.0)	TTG	U	1405	1/8	( 3.0)	TTG	U
1794	1/4	( 6.0)	TTG	U	1230	3/16	( 5.0)	TTG	U
<b>AFG INDS INC; VICTORVILLE, CA</b>					1231	1/4	( 6.0)	TTG	U
1664	1/8	( 3.2)	TTG	U	1232	3/8	(10.0)	TTG	U
1641	5/32	( 4.0)	TTG	U	1406	1/2	(12.0)	TTG	U
1663	3/16	( 4.8)	TTG	U	1428	5/32	( 4.0)	TPG(S)	U
<b>AFG INDS INC; GREENLAND, TN</b>					1415	3/16	( 4.8)	TPG(S)	U
598	1/8	( 3.0)	TTG	U	1810	7/32	( 5.6)	LTG(B)( .030)	U
955	5/32	( 4.0)	TTG	U	1706	1/4	( 6.0)	LTG(B)	U
220	3/16	( 5.0)	TTG	U	<b>ANGLASS INDS INC; SAN FERNANDO, CA</b>				
89	1/4	( 6.0)	TTG	U					<b>ANSI ONLY</b>
90	3/8	(10.0)	TTG	U	520	1/8	( 3.0)	TTG	U
587	1/8	( 3.2)	TPG(S)	U	999	3/16	( 5.0)	TTG	U
1139	3/16	( 4.8)	TPG(S)	U	1000	1/4	( 6.0)	TTG	U
<b>AFG INDS INC; KINGSFORD, TN</b>					<b>ARCH ALUMINUM &amp; GLASS CO; AUSTELL, GA</b>				
1390	1/8	( 3.0)	TTG	U					<b>ANSI ONLY</b>
949	5/32	( 4.0)	TTG	U	1765	1/8	( 3.0)	TTG	U
28	3/16	( 5.0)	TTG	U	1766	3/16	( 5.0)	TTG	U
24	1/4	( 6.0)	TTG	U	1767	1/4	( 6.0)	TTG	U
1143	3/16	( 4.8)	TPG(S)	U	1768	3/8	(10.0)	TTG	U
1414	1/8	( 3.2)	TPG(M)	U	1769	1/2	(12.0)	TTG	U
<b>AFG INDS INC; SPRING HILL, KS</b>					<b>ARCH TEMPERED GLASS PRODUCTS; ORLANDO, FL</b>				
1702	1/8	( 3.0)	TTG	U					<b>ANSI ONLY</b>
1703	5/32	( 4.0)	TTG	U	1526	1/8	( 3.0)	TTG	U
1704	3/16	( 5.0)	TTG	U	1527	3/16	( 5.0)	TTG	U
1705	1/4	( 6.0)	TTG	U	1528	1/4	( 6.0)	TTG	U
					1529	3/8	(10.0)	TTG	U
					1530	1/2	(12.0)	TTG	U
					1531	1/8	( 3.0)	TPG(S)	U
					1682	5/32	( 4.0)	TPG(S)	U

SGCC NO.	INCH	(MM)	TYPE	MAX. SIZE CERTIFIED	SGCC NO.	INCH	(MM)	TYPE	MAX. SIZE CERTIFIED
ARCH TEMPERED GLASS PRODUCTS; ORLANDO, FL (CONT)					DOWNEY GLASS CO; LOS ANGELES, CA (CONT)				
1562	3/16	( 4.8 )	TPG(S)	U	516	1/2	( 12.0 )	TTG	U
ARDCO INC; CHICAGO, IL					935	3/16	( 4.8 )	TPG(S)	U
1041	1/8	( 3.0 )	TTG	U	678	7/32	( 5.6 )	TPG(S)	U
1042	3/16	( 5.0 )	TTG	U	1611	1/8	( 3.2 )	TPG(M)	U
1563	5/32	( 4.0 )	TBG	U	EMPIRE GLASS INC; BRONX, NY				
1564	3/16	( 5.0 )	TBG	U	1398	3/16	( 5.0 )	TTG	U
1565	1/4	( 6.0 )	TBG	U	1399	1/4	( 6.0 )	TTG	U
ASAHI GLASS CO LTD; TOKYO, JAPAN					1400	3/8	( 10.0 )	TTG	U
1770	3/8	( 10.0 )	TTG	U	1401	1/2	( 12.0 )	TTG	U
BUILDERS & DECORATORS GLASS CO; FT. LAUDERDALE, FL					1402	3/4	( 19.0 )	TTG	U
ANSI ONLY					FALCONER GLASS INDS INC; FALCONER, NY				
1667	1/4	( 6.0 )	LTG(L)	U	1545	3/16	( 5.0 )	TTG	U
CAMERON GLASS INC; BROKEN ARROW, OK					709	1/4	( 6.0 )	TTG	U
1736	1/8	( 3.2 )	TTG	U	1280	3/8	( 10.0 )	TTG	U
1763	5/32	( 4.0 )	TTG	U	711	1/2	( 12.0 )	TTG	U
1749	3/16	( 5.0 )	TTG	U	712	3/4	( 19.0 )	TTG	U
1780	1/4	( 6.0 )	TTG	U	FALCONER-LEWISTOWN INC; LEWISTOWN, PA				
CARDINAL TG; TOMAH, WI					ANSI ONLY				
CPSC ONLY					1282	7/32	( 5.5 )	LTG(B)( .015)	U
1804	1/8	( 3.0 )	TTG	U	1284	1/4	( 6.0 )	LTG(B)( .015)	U
1805	5/32	( 4.0 )	TTG	U	1315	3/8	( 10.0 )	LTG(B)( .015)	U
1806	3/16	( 5.0 )	TTG	U	1316	1/2	( 12.0 )	LTG(B)( .015)	U
1807	1/4	( 6.0 )	TTG	U	FALCONER-LEWISTOWN INC; LEWISTOWN, PA				
COLONIAL MIRROR & GLASS CORP; BROOKLYN, NY					1627	1/8	( 3.0 )	TTG	U
1165	1/4	( 6.0 )	TTG	U	1628	3/16	( 5.0 )	TTG	U
1166	3/8	( 10.0 )	TTG	U	1629	1/4	( 6.0 )	TTG	U
1167	1/2	( 12.0 )	TTG	U	FLEX-O-GLASS INC; DIXON, IL				
CONTOUR INDUSTRIES INC; SURGOINSVILLE, TN					118	0.080-inch through 0.125-inch smooth extruded acrylic			U
1680	1/8	( 3.0 )	TTG	18" by 36"	FLORAL GLASS & MIRROR INC; HAUPPAUGE, NY				
1678	3/16	( 5.0 )	TTG	18" by 36"	1546	1/8	( 3.0 )	TTG	U
1677	1/4	( 6.0 )	TTG	18" by 36"	1547	3/16	( 5.0 )	TTG	U
1676	1/8	( 3.0 )	TPG(S)	18" by 36"	1548	1/4	( 6.0 )	TTG	U
CORAGLASS INC; REFORM, AL					1549	3/8	( 10.0 )	TTG	U
1732	3/16	( 5.0 )	TTG	U	1550	1/2	( 12.0 )	TTG	U
1733	1/4	( 6.0 )	TTG	U	1551	3/4	( 19.0 )	TTG	U
D & S TEMPERED GLASS; DALLAS, TX					1552	1/8	( 3.2 )	TPG(S)	U
1653	1/8	( 3.0 )	TTG	U	1553	7/32	( 5.6 )	TPG(S)	U
1654	5/32	( 4.0 )	TTG	U	FOUR SEASONS SOLAR PRODUCTS; HOLBROOK, NY				
1655	3/16	( 5.0 )	TTG	U	1791	1/8	( 3.0 )	TTG	U
1656	1/4	( 6.0 )	TTG	U	FREE STATE GLASS INDS; WARRENTON, VA				
1657	3/8	( 10.0 )	TTG	U	1590	1/8	( 3.0 )	TTG	U
1658	1/2	( 12.0 )	TTG	U	1591	3/16	( 5.0 )	TTG	U
1659	1/8	( 3.0 )	TPG(S)	U	1592	1/4	( 6.0 )	TTG	U
1660	5/32	( 4.0 )	TPG(S)	U	1684	5/16	( 8.0 )	TTG	U
1661	3/16	( 4.8 )	TPG(S)	U	1593	3/8	( 10.0 )	TTG	U
DONNELLY CORP; HOLLAND, MI					1594	1/2	( 12.0 )	TTG	U
1721	1/8	( 3.0 )	TTG	30" by 60"	GEMTRON CORP; SWEETWATER, TN				
1687	3/16	( 4.8 )	TTG	30" by 76"	1334	1/8	( 3.0 )	TTG	U
1688	1/4	( 6.0 )	TTG	30" by 76"	1332	5/32	( 4.0 )	TTG	U
DOWNEY GLASS CO; LOS ANGELES, CA					1426	.169	( 4.3 )	TTG	U
1608	1/8	( 3.0 )	TTG	U	1201	3/16	( 5.0 )	TTG	U
1609	5/32	( 4.0 )	TTG	U	1477	1/4	( 6.0 )	TTG	U
630	3/16	( 5.0 )	TTG	U	1422	1/8	( 3.2 )	TPG(S)	U
514	1/4	( 6.0 )	TTG	U	1424	5/32	( 4.0 )	TPG(S)	U
515	3/8	( 10.0 )	TTG	U					



SGCC NO.	INCH	(MM)	TYPE	MAX. SIZE CERTIFIED	SGCC NO.	INCH	(MM)	TYPE	MAX. SIZE CERTIFIED
<b>GLASS FACTORY INC; RONKONKOMA, NY</b>					<b>GUARDIAN INDS CORP; FORT LAUDERDALE, FL (CON'T)</b>				
1458	1/8	( 3.0)	TTG	U	633	3/16	( 5.0)	TTG	U
1459	3/16	( 5.0)	TTG	U	40	1/4	( 6.0)	TTG	U
1460	1/4	( 6.0)	TTG	U	1665	1/8	( 3.2)	TPG(S)	30" by 70"
1461	1/2	(12.0)	TTG	U	1318	3/16	( 4.8)	TPG(S)	U
<b>GLASSTEMP INC; BENSENVILLE, IL</b>					<b>GUARDIAN INDS CORP; KINGSBURG, CA</b>				
1381	3/16	( 5.0)	TTG	U					<b>ANSI ONLY</b>
1382	1/4	( 6.0)	TTG	U	968	1/8	( 3.0)	TTG	U
1383	3/8	(10.0)	TTG	U	969	5/32	( 4.0)	TTG	U
1384	1/2	(12.0)	TTG	U	970	3/16	( 5.0)	TTG	U
1808	3/16	( 5.0)	TBG	U	971	1/4	( 6.0)	TTG	U
1809	1/4	( 6.0)	TBG	U	1304	3/16	( 4.8)	TPG(S)	U
1536	3/8	(10.0)	TBG	U	<b>GUARDIAN INDS CORP; RICHBURG, SC</b>				
1533	1/2	(12.0)	TBG	U					<b>ANSI ONLY</b>
<b>GLOBE-AMERADA GLASS CO (ASSURANCE); SELMA, AL</b>					1630	1/8	( 3.0)	TTG	U
1668	1/4	( 6.0)	LTG(B)	U	1631	5/32	( 4.0)	TTG	U
<b>GUARDIAN FABRICATION INC; MILLBURY, OH</b>					1632	3/16	( 5.0)	TTG	U
				<b>ANSI ONLY</b>	1633	1/4	( 6.0)	TTG	U
1574	1/8	( 3.0)	TTG	U	1634	3/8	(10.0)	TTG	U
1575	5/32	( 4.0)	TTG	U	1683	1/8	( 3.2)	TPG(S)	U
1576	3/16	( 5.0)	TTG	U	1635	5/32	( 4.0)	TPG(S)	U
1577	1/4	( 6.0)	TTG	U	<b>GUARDIAN INDS CORP; UPPER SANDUSKY, OH</b>				
<b>GUARDIAN FABRICATION INC; ROGERS, AR</b>									<b>ANSI ONLY</b>
1355	1/8	( 3.0)	TTG	U	458	7/32	( 5.5)	LTG(B)( .030)	U
1616	5/32	( 4.0)	TTG	U	487	1/4	( 6.0)	LTG(B)( .030)	U
1356	3/16	( 5.0)	TTG	U	<b>GUARDIAN INDS CORP; TILLSONBURG, ONTARIO, CANADA</b>				
1357	1/4	( 6.0)	TTG	U					<b>ANSI ONLY</b>
1358	1/8	( 3.2)	TPG(S)	U	1462	1/8	( 3.0)	TTG	U
1359	5/32	( 4.0)	TPG(S)	U	<b>HAMILTON GLASS PRODUCTS INC; VINCENNES, IN</b>				
1394	3/16	( 4.8)	TPG(D)	U	54	1/8	( 3.0)	TTG	U
<b>GUARDIAN FABRICATION INC; WEBSTER, MA</b>					1385	5/32	( 4.0)	TTG	U
				<b>ANSI ONLY</b>	1200	3/16	( 5.0)	TTG	U
300	1/8	( 3.0)	TTG	U	57	1/4	( 6.0)	TTG	U
1607	5/32	( 4.0)	TTG	U	1386	5/32	( 4.0)	TPG(S)	U
1216	3/16	( 5.0)	TTG	U	1387	3/16	( 4.8)	TPG(S)	U
662	1/4	( 6.0)	TTG	U	<b>HANKUK GLASS INDUSTRY LTD; SEOUL, KOREA</b>				
471	3/8	(10.0)	TTG	U					<b>ANSI ONLY</b>
1235	1/2	(12.0)	TTG	U	1479	5/32	( 4.0)	TTG	U
<b>GUARDIAN INDUSTRIES CORP; CARLETON, MI</b>					1480	3/16	( 5.0)	TTG	U
				<b>ANSI ONLY</b>	1413	1/4	( 6.0)	TTG	U
933	1/8	( 3.0)	TTG	U	1481	5/16	( 8.0)	TTG	U
934	5/32	( 4.0)	TTG	U	1482	3/8	(10.0)	TTG	U
631	3/16	( 5.0)	TTG	U	1483	1/2	(12.0)	TTG	U
131	1/4	( 6.0)	TTG	U	<b>HEHR GLASS CO; CHESANING, MI</b>				
<b>GUARDIAN INDS CORP; CORSICANA, TX</b>									<b>ANSI ONLY</b>
				<b>ANSI ONLY</b>	1602	5/32	( 4.0)	TPG(S)	U
1248	1/8	( 3.0)	TTG	U	1730	7/32	( 5.6)	TPG(S)	U
1249	5/32	( 4.0)	TTG	U	<b>HEHR GLASS CO; CHESANING, MI</b>				
1250	3/16	( 5.0)	TTG	U					
1251	1/4	( 6.0)	TTG	U	1062	1/8	( 3.0)	TTG	U
1253	3/8	(10.0)	TTG	U	1646	5/32	( 4.0)	TTG	U
1803	1/2	(12.0)	TTG	U	1510	3/16	( 5.0)	TTG	U
1463	1/8	( 3.2)	TPG(S)	U	1517	1/4	( 6.0)	TTG	U
1737	5/32	( 4.0)	TPG(S)	U	1514	1/8	( 3.0)	TPG(S)	32" by 60"
1464	7/32	( 5.6)	TPG(S)	U	<b>HGP INDUSTRIES; WARRENTON, MO</b>				
<b>GUARDIAN INDS CORP; FORT LAUDERDALE, FL</b>									
				<b>ANSI ONLY</b>	1379	1/8	( 3.0)	TTG	U
1161	1/8	( 3.0)	TTG	U	1380	5/32	( 4.0)	TTG	U
					1421	3/16	( 5.0)	TTG	U

SGCC NO.	INCH	(MM)	TYPE	MAX. SIZE CERTIFIED	SGCC NO.	INCH	(MM)	TYPE	MAX. SIZE CERTIFIED
<b>HGP INDUSTRIES; WARRENTON, MO (CON'T)</b>					<b>PPG INDS INC; CARLISLE, PA</b>				
1448	1/4	( 6.0)	TTG	U	250	1/8	( 3.0)	TTG	U
<b>HOFFER'S INC; SCHOFIELD, WI</b>					675	5/32	( 4.0)	TTG	U
1595	1/8	( 3.0)	TTG	U	249	3/16	( 5.0)	TTG	U
1596	3/16	( 5.0)	TTG	U	<b>PPG INDS INC; FORD CITY, PA</b>				
1597	1/4	( 6.0)	TTG	U	70	1/4	( 6.0)	TTG	U
1796	3/8	(10.0)	TTG	U	<b>PPG INDS INC; FRESNO, CA</b>				
1797	1/2	(12.0)	TTG	U	295	1/8	( 3.0)	TTG	U
1798	3/16	( 5.0)	TPG(S)	U	676	5/32	( 4.0)	TTG	U
<b>INDEPENDENT INSULATING GLASS CO; BEDFORD PARK, IL</b>					64	3/16	( 5.0)	TTG	U
1669	3/16	( 5.0)	TTG	U	<b>PPG INDS INC; BURLINGTON, IA</b>				
1670	1/4	( 6.0)	TTG	U	1605	1/8	( 3.0)	TTG	U
<b>LAMINATED GLASS CORP; TELFORD, PA</b>					1606	5/32	( 4.0)	TTG	U
1811	3/16	( 5.0)	LTG(B)( .030)	U	1603	3/16	( 5.0)	TTG	U
1652	1/4	( 6.0)	LTG(B)( .030)	U	1604	1/4	( 6.0)	TTG	U
<b>MACDONALD MIRROR INC; BRAMPTON, ONTARIO, CANADA</b>					<b>PPG INDS INC; WICHITA FALLS, TX</b>				
1651	1/4	( 6.0)	LTG(B)( .030)	U	1113	1/4	( 6.0)	TTG	ANSI ONLY U
<b>MARVIN WINDOWS; WARROAD, MN</b>					<b>PPG INDS INC; WICHITA FALLS, TX</b>				
1689	1/8	( 3.0)	TTG	U	1110	1/8	( 3.0)	TTG	U
1723	5/32	( 4.0)	TTG	U	1111	5/32	( 4.0)	TTG	U
1690	3/16	( 5.0)	TTG	U	1112	3/16	( 5.0)	TTG	U
1691	1/4	( 6.0)	TTG	U	<b>SAFELITE GLASS CORP; WICHITA, KS</b>				
1724	1/8	( 3.0)	TPG(S)	U	1173	7/32	( 5.5)	LTG(B)( .015)	ANSI ONLY U
1701	3/16	( 5.0)	TPG(S)	U	<b>SAFELITE GLASS CORP; WICHITA, KS</b>				
<b>MILGARD TEMPERING INC; TACOMA, WA</b>					1360	3/16	( 5.0)	LTG(B)( .030)	U
1578	1/4	( 6.0)	TTG	U	1666	7/32	( 5.6)	LPG(B)( .030)	U
<b>NASHVILLE TEMPERED GLASS CORP; NASHVILLE, TN</b>					<b>SAINT GOBAIN; THE NETHERLANDS</b>				
1416	1/8	( 3.0)	TTG	U	1393	1/4	( 6.0)	TTG	ANSI ONLY U
1467	3/16	( 5.0)	TTG	U	<b>SHAW GLASS CO INC; SOUTH EASTON, MA</b>				
1417	1/4	( 6.0)	TTG	U	1792	5/32	( 4.0)	TTG	U
<b>NORTHWEST ALUMINUM PRODUCTS INC; YAKIMA, WA</b>					1034	3/16	( 5.0)	TTG	U
1799	1/8	( 3.0)	TTG	U	1035	1/4	( 6.0)	TTG	U
1800	3/16	( 5.0)	TTG	U	1036	3/8	(10.0)	TTG	U
1801	1/4	( 6.0)	TTG	U	1037	1/2	(12.0)	TTG	U
1802	1/8	( 3.0)	TPG(S)	U	1793	5/32	( 4.0)	TPG(S)	U
<b>NORTHWESTERN INDS INC; SEATTLE, WA</b>					1299	3/16	( 4.8)	TPG(S)	U
1638	3/16	( 5.0)	TTG	U	<b>SOLAR SEAL SOUTH INC; ASHLAND, VA</b>				
1639	1/4	( 6.0)	TTG	U	1621	3/16	( 5.0)	TTG	U
1640	3/16	( 5.0)	LTG(B)( .030)	U	1622	1/4	( 6.0)	TTG	U
<b>O &amp; W GLASS INDS INC; EVERETT, WA</b>					<b>SPECTRUM GLASS PRODUCTS; CLINTON, NC</b>				
1429	1/8	( 3.0)	TTG	U	1073	3/16	( 5.0)	TTG	ANSI ONLY U
<b>PAN LAM INDS; BOTHELL, WA</b>					1074	1/4	( 6.0)	TTG	U
1647	3/16	( 5.0)	LTG(B)	U	1075	5/16	( 8.0)	TTG	U
<b>PERILSTEIN DISTRIBUTING CORP; CHESWICK, PA</b>					1076	3/8	(10.0)	TTG	U
1784	1/8	( 3.0)	TTG	U	1077	1/2	(12.0)	TTG	U
1785	3/16	( 5.0)	TTG	U	1716	5/8	(16.0)	TTG	U
1786	1/4	( 6.0)	TTG	U	1718	3/4	(19.0)	TTG	U
1787	3/8	(10.0)	TTG	U	<b>PPG INDS INC; CARLISLE, PA</b>				
1788	1/2	(12.0)	TTG	U	382	1/4	( 6.0)	TTG	ANSI ONLY U
1790	3/16	( 5.0)	TPG	U					
1789	1/8	( 3.0)	TPG(S)	U					

SGCC NO.	INCH	(MM)	TYPE	MAX. SIZE CERTIFIED	SGCC NO.	INCH	(MM)	TYPE	MAX. SIZE CERTIFIED
<b>SPECTRUM GLASS PRODUCTS; CLINTON, NC</b>					<b>TEMPERED GLASS INC; AUSTELL, GA (CON'T)</b>				
				<b>CPSC ONLY</b>	866	1/2	(12.0)	TTG	U
1080	3/16	( 5.0)	TTG	U	<b>TEMPGLASS INC; PERRYSBURG, OH</b>				
1081	1/4	( 6.0)	TTG	U	1039	1/8	( 3.0)	TTG	U
1082	5/16	( 8.0)	TTG	U	592	3/16	( 5.0)	TTG	U
1083	3/8	(10.0)	TTG	U	1420	1/4	( 6.0)	TTG	U
1084	1/2	(12.0)	TTG	U	594	3/8	(10.0)	TTG	U
1717	5/8	(16.0)	TTG	U	595	1/2	(12.0)	TTG	U
1719	3/4	(19.0)	TTG	U	<b>TEMPGLASS EASTERN INC; BUFORD, GA</b>				
<b>SPI GLASS CORP; CLAREMORE, OK</b>					979	1/8	( 3.0)	TTG	U
1361	5/32	( 4.0)	TTG	U	1259	5/32	( 4.0)	TTG	U
1362	3/16	( 5.0)	TTG	U	981	3/16	( 5.0)	TTG	U
1363	1/4	( 6.0)	TTG	U	982	1/4	( 6.0)	TTG	U
1812	5/16	( 8.0)	TTG	U	1058	3/8	(10.0)	TTG	U
1374	3/8	(10.0)	TTG	U	1059	1/2	(12.0)	TTG	U
<b>STERLING PLUMBING GROUP; MALVERN, AR</b>					1771	1/4	( 6.0)	LTG(B)( .030)	U
1759	1/8	( 3.0)	TTG	U	1772	3/8	(10.0)	LTG(B)( .030)	U
1760	5/32	( 4.0)	TTG	U	1773	1/2	(12.0)	LTG(B)( .030)	U
1761	3/16	( 5.0)	TTG	U	<b>TEMPGLASS MIAMI; MIAMI, FL</b>				
1762	1/4	( 6.0)	TTG	U	1744	3/16	( 5.0)	TTG	U
1781	1/8	( 3.0)	TPG(S)	U	1745	1/4	( 6.0)	TTG	U
<b>SUMITEC INC; BENTON HARBOR, MI</b>					1746	3/8	(10.0)	TTG	U
				<b>ANSI ONLY</b>	1747	1/2	(12.0)	TTG	U
1441	7/32	( 5.6)	LTG(B)	U	<b>TEMPGLASS SOUTHERN INC; GRAND PRAIRIE, TX</b>				
1699	1/2	(12.0)	LTG(B)	U	1219	3/16	( 5.0)	TTG	U
<b>SUNBELT GLASS INC; TULSA, OK</b>					1044	1/4	( 6.0)	TTG	U
1453	1/8	( 3.0)	TTG	U	1045	3/8	(10.0)	TTG	U
1454	3/16	( 5.0)	TTG	U	1046	1/2	(12.0)	TTG	U
1455	1/4	( 6.0)	TTG	U	1700	5/16	( 8.0)	LTG(B)	U
1456	3/8	(10.0)	TTG	U	1649	1/2	(12.0)	LTG(B)( .031)	U
1457	1/2	(12.0)	TTG	U	<b>THERMAGLAS CORP; SAGINAW, MI</b>				
1617	5/32	( 4.0)	TPG(S)	U	1738	3/16	( 5.0)	TTG	U
1618	3/16	( 4.8)	TPG(S)	U	1739	1/4	( 6.0)	TTG	U
<b>SWIFT GLASS CO INC; ELMIRA HEIGHTS, NY</b>					1740	3/8	(10.0)	TTG	U
1555	1/8	( 3.0)	TTG	U	1741	1/2	(12.0)	TTG	U
1556	3/16	( 5.0)	TTG	U	1783	3/16	( 5.0)	TPG(M)	U
1557	1/4	( 6.0)	TTG	U	<b>TRACO (THREE RIVERS ALUM); WARRENDALE, PA</b>				
1558	3/8	(10.0)	TTG	U	1308	1/8	( 3.0)	TTG	U
1559	1/2	(12.0)	TTG	U	1310	3/16	( 5.0)	TTG	U
<b>TAYLOR PRODUCTS INC; PAYNE, OH</b>					1311	1/4	( 6.0)	TTG	U
1586	1/8	( 3.2)	TTG	U	<b>U S PRECISION GLASS; ELGIN, IL</b>				
1587	5/32	( 4.0)	TTG	U	1369	1/8	( 3.0)	TTG	U
1588	3/16	( 5.0)	TTG	U	1370	5/32	( 4.0)	TTG	U
1589	1/4	( 6.0)	TTG	U	1371	3/16	( 5.0)	TTG	U
1598	3/8	(10.0)	TTG	U	1372	1/4	( 6.0)	TTG	U
<b>TEMP-TECH INDS INC; CHICAGO, IL</b>					<b>U S PRECISION GLASS; JEFFERSON, TX</b>				
986	1/4	( 6.0)	TTG	U	1388	1/8	( 3.2)	TPG(M)	U
<b>TEMPERED GLASS CORP; TAMPA, FL</b>					<b>U S PRECISION GLASS; JEFFERSON, TX</b>				
1395	3/16	( 5.0)	TTG	U	1281	1/8	( 3.0)	TTG	U
337	1/4	( 6.0)	TTG	U	1715	5/32	( 4.0)	TTG	U
348	3/8	(10.0)	TTG	U	1286	3/16	( 5.0)	TTG	U
338	1/2	(12.0)	TTG	U	1287	1/4	( 6.0)	TTG	U
1329	3/16	( 4.8)	TPG(S)	U	<b>U S PRECISION GLASS; LEWISBURG, OH</b>				
1118	7/32	( 5.6)	TPG(S)	U	188	3/16	( 4.8)	TPG(S)	U
<b>TEMPERED GLASS INC; AUSTELL, GA</b>					<b>ANSI ONLY</b>				
862	3/16	( 5.0)	TTG	U	<b>ANSI ONLY</b>				
863	1/4	( 6.0)	TTG	U	<b>ANSI ONLY</b>				
865	3/8	(10.0)	TTG	U	<b>ANSI ONLY</b>				

SGCC NO.	INCH	(MM)	TYPE	MAX. SIZE CERTIFIED
<b>U S PRECISION GLASS; LEWISBURG, OH (CON'T)</b>				
562	7/32	( 5.6)	TPG(S)	U
654	1/8	( 3.2)	TPG(M)	U
328	3/16	( 4.8)	TPG(D)	U
<b>U S PRECISION GLASS; LEWISBURG, OH</b>				
1050	1/8	( 3.0)	TTG	U
1452	5/32	( 4.0)	TTG	U
185	3/16	( 5.0)	TTG	U
186	1/4	( 6.0)	TTG	U
<b>VIRACON INC; OWATONNA, MN</b>				
1476	1/8	( 3.0)	TTG	U
1403	3/16	( 5.0)	TTG	U
1404	1/4	( 6.0)	TTG	U
1508	3/8	(10.0)	TTG	U
1509	1/2	(12.0)	TTG	U
1637	3/16	( 5.0)	LTG(B)( .030)	U
1778	9/32	( 7.0)	LTG(B)( .034)	U
1764	5/16	( 8.0)	LTG(B)( .077)	U
1636	3/16	( 5.0)	LPG(B)( .030)	U
<b>VIRACON WEST; VACAVILLE, CA</b>				
1571	3/16	( 5.0)	TTG	U
1572	1/4	( 6.0)	TTG	U
1752	3/8	(10.0)	TTG	U
1753	1/2	(12.0)	TTG	U
1751	3/16	( 5.0)	LTG(B)( .030)	U
<b>VIRGINIA GLASS PRODUCTS CORP; MARTINSVILLE, VA</b>				
12	3/16	( 5.0)	TTG	U
14	1/4	( 6.0)	TTG	U
93	3/8	(10.0)	TTG	U
94	1/2	(12.0)	TTG	U
95	3/4	(19.0)	TTG	U
1275	3/16	( 4.8)	TPG(S)	U

## CERTIFIED PRODUCTS KEY

TTG = TEMPERED TRANSPARENT GLASS

TPG = TEMPERED PATTERNED GLASS

TBG = TEMPERED BENT GLASS

LTG = LAMINATED TRANSPARENT GLASS

LPG = LAMINATED PATTERNED GLASS

OCG = ORGANIC COATED GLASS

(S) = SHALLOW PATTERN

(M) = MEDIUM PATTERN

(D) = DEEP PATTERN

(B) = POLY VINYL BUTYRAL  
INTERLAYER MATERIAL

(L) = LIQUID RESIN  
INTERLAYER MATERIAL

U = UNLIMITED SIZE

	<u>SGCC NO.</u>		<u>MAX. SIZE CERTIFIED</u>
<b>TEMPERED TRANSPARENT GLASS</b>			
<b>1/8 inch tempered transparent glass</b>			
AFG Industries; Bridgeport, WV	1436		U
AFG Industries; Greenland, TN	598		U
AFG Industries; Kingsport, TN	1390		U
AFG Industries Inc; Spring Hill, KS	1702		U
AFG Glass Inc; Concord, Ontario, Canada	1485		U
American Flat GLass Dist; Alvarado, TX	1708		U
American Flat Glass Distrib; Fall River, MA	1518		U
American Flat Glass Distrib; Marietta, GA	1405		U
Anglass Industries; San Fernando, CA	520	ANSI ONLY	U
Arch Aluminum & Glass Co; Austell, GA	1765	ANSI ONLY	U
Arch Tempered Glass; Orlando, FL	1526	ANSI ONLY	U
Ardco, Inc; Chicago, IL	1041		U
Cardinal TG; Tomah, WI	1804	CPSC ONLY	U
Contour Industries; Surgoinsville, TN	1680		18" by 36"
D & S Tempered Glass; Dallas, TX	1653		U
Donnelly Corp; Holland, MI	1721		30" by 60"
Downey Glass Co; Los Angeles, CA	1608		U
Falconer-Lewistown; Lewistown, PA	1627		U
Floral Glass & Mirror; Hauppauge, NY	1546		U
Four Seasons Solar Products; Holbrook, NY	1791		U
Free State Glass Industries; Warrenton, VA	1590		U
Gemtron Corp; Sweetwater, TN	1334		U
The Glass Factory; Ronkonkoma, NY	1458		U
Guardian Fabrication; Millbury, OH	1574	ANSI ONLY	U
Guardian Fabrication; Rogers, AR	1355		U
Guardian Fabrication; Webster, MA	300	ANSI ONLY	U
Guardian Industries; Carleton, MI	933	ANSI ONLY	U
Guardian Industries; Corsicana, TX	1248	ANSI ONLY	U
Guardian Industries; Fort Lauderdale, FL	1161	ANSI ONLY	U
Guardian Industries; Kingsburg, CA	968	ANSI ONLY	U
Guardian Industries; Richburg, SC	1630	ANSI ONLY	U
Guardian Industries; Tillsonburg, Ontario, Canada	1462	ANSI ONLY	U
Hamilton Glass Products; Vincennes, IN	54		U
Hehr Glass Co; Chesaning, MI	1062		U
HGP Architectural Glass; Warrenton, MO	1379		U
Hoffer's, Inc.; Schofield, WI	1595		U
Marvin Windows; Warroad, MN	1689		U
Nashville Tempered Glass; Nashville, TN	1416		U
Northwest Aluminum Products; Yakima, WA	1799		U
O & W Glass Ind; Everett, WA	1429		U
Perilstein Distributing Corp; Cheswick, PA	1784		U
PPG Industries; Carlisle, PA	250		U
PPG Industries; Fresno, CA	295		U
PPG Industries; Burlington, IA	1605		U
PPG Industries; Wichita Falls, TX	1110		U
Sterling Plumbing Group; Malvern, AR	1759		U
Sunbelt Glass, Inc; Tulsa, OK	1453		U
Swift Glass Co., Inc.; Elmira Heights, NY	1555		U
Tempglass, Inc; Perrysburg, OH	1039		U
Tempglass Eastern, Inc; Buford, GA	979		U
TRACO (Three Rivers Alum.); Warrendale, PA	1308		U
U S Precision Glass; Elgin, IL	1369		U
U S Precision Glass; Jefferson, TX	1281		U
U S Precision Glass; Lewisburg, OH	1050		U
Viracon, Inc; Owatonna, MN	1476		U
AFG Industries; Victorville, CA	1664		U
Cameron Glass Inc; Broken Arrow, OK	1736		U
Taylor Products, Inc.; Payne, OH	1586		U

**5/32 inch tempered transparent glass**

AFG Industries; Bridgeport, WV	1624	U
--------------------------------	------	---

**TEMPERED TRANSPARENT GLASS - continued**  
**5/32 inch tempered transparent glass - continued**

	<u>SGCC NO.</u>	<u>MAX. SIZE CERTIFIED</u>
AFG Industries; Victorville, CA	1641	U
AFG Industries; Greenland, TN	955	U
AFG Industries; Kingsport, TN	949	U
AFG Industries Inc; Spring Hill, KS	1703	U
AFG Glass Inc; Concord, Ontario, Canada	1486	U
All Team Glass & Mirror Ltd; Woodbridge, Ontario, CANADA	1754	U
Cameron Glass Inc; Broken Arrow, OK	1763	U
Cardinal TG; Tomah, WI	1805	CPSC ONLY
D & S Tempered Glass; Dallas, TX	1654	U
Downey Glass Co; Los Angeles, CA	1609	U
Gemtron Corp; Sweetwater, TN	1332	U
Guardian Fabrication; Millbury, OH	1575	ANSI ONLY
Guardian Fabrication; Rogers, AR	1616	U
Guardian Fabrication; Webster, MA	1607	ANSI ONLY
Guardian Industries; Carleton, MI	934	ANSI ONLY
Guardian Industries; Corsicana, TX	1249	ANSI ONLY
Guardian Industries; Kingsburg, CA	969	ANSI ONLY
Guardian Industries; Richburg, SC	1631	ANSI ONLY
Hamilton Glass Products; Vincennes, IN	1385	U
Hankuk Glass Ind; Seoul, Korea	1479	ANSI ONLY
Hehr Glass Co; Chesaning, MI	1646	U
HGP Architectural Glass; Warrenton, MO	1380	U
Marvin Windows; Warroad, MN	1723	U
PPG Industries; Carlisle, PA	675	U
PPG Industries; Fresno, CA	676	U
PPG Industries; Burlington, IA	1606	U
PPG Industries; Wichita Falls, TX	1111	U
Shaw Glass Co Inc; South Easton, MA	1792	U
SPI Glass Corp; Claremore, OK	1361	U
Sterling Plumbing Group; Malvern, AR	1760	U
Taylor Products, Inc.; Payne, OH	1587	U
Tempglass Eastern, Inc; Buford, GA	1259	U
U S Precision Glass; Elgin, IL	1370	U
U S Precision Glass; Jefferson, TX	1715	U
U S Precision Glass; Lewisburg, OH	1452	U

**.169 inch tempered transparent glass**

Gemtron Corp; Sweetwater, TN	1426	U
------------------------------	------	---

**3/16 inch tempered transparent glass**

AFG Industries; Victorville, CA	1663	U
Donnelly Corp; Holland, MI	1687	30" by 76"
ACI Glass; Greensboro, NC	1642	U
ACI Glass Products Inc; Dallas, TX	400	U
ACI Glass Products; Santa Clara, CA	1494	U
ACI Glass; Santa Fe Springs, CA	1157	U
AFG Industries; Bridgeport, WV	1795	U
AFG Industries; Greenland, TN	220	U
AFG Industries; Kingsport, TN	28	U
AFG Industries Inc; Spring Hill, KS	1704	U
AFG Glass Inc; Concord, Ontario, Canada	1487	U
All Team Glass & Mirror Ltd; Woodbridge, Ontario, CANADA	1755	U
American Flat Glass Dist; Alvarado, TX	1709	U
American Flat Glass Distrib; Fall River, MA	1519	U
American Flat Glass Distrib; Marietta, GA	1230	U
Anglass Industries; San Fernando, CA	999	ANSI ONLY
Arch Aluminum & Glass Co; Austell, GA	1766	ANSI ONLY
Arch Tempered Glass; Orlando, FL	1527	ANSI ONLY
Ardco, Inc; Chicago, IL	1042	U
Cameron Glass Inc; Broken Arrow, OK	1749	U
Cardinal TG; Tomah, WI	1806	CPSC ONLY
Contour Industries; Surgoinsville, TN	1678	18" by 36"

	<u>SGCC NO.</u>	<u>MAX. SIZE CERTIFIED</u>
<b>TEMPERED TRANSPARENT GLASS - continued</b>		
<b>3/16 inch tempered transparent glass - continued</b>		
Coraglass Inc; Reform, AL	1732	U
D & S Tempered Glass; Dallas, TX	1655	U
Downey Glass Co; Los Angeles, CA	630	U
Empire Glass, Inc; Bronx, NY	1398	U
Falconer Glass Industries; Falconer, NY	1545	U
Falconer-Lewistown; Lewistown, PA	1628	U
Floral Glass & Mirror; Hauppauge, NY	1547	U
Free State Glass Industries; Warrenton, VA	1591	U
Gemtron Corp; Sweetwater, TN	1201	U
The Glass Factory; Ronkonkoma, NY	1459	U
Glasstemp, Inc.; Bensenville, IL	1381	U
Guardian Fabrication; Millbury, OH	1576	ANSI ONLY U
Guardian Fabrication; Rogers, AR	1356	U
Guardian Fabrication; Webster, MA	1216	ANSI ONLY U
Guardian Industries; Carleton, MI	631	ANSI ONLY U
Guardian Industries; Corsicana, TX	1250	ANSI ONLY U
Guardian Industries; Fort Lauderdale, FL	633	ANSI ONLY U
Guardian Industries; Kingsburg, CA	970	ANSI ONLY U
Guardian Industries; Richburg, SC	1632	ANSI ONLY U
Hamilton Glass Products; Vincennes, IN	1200	U
Hankuk Glass Ind; Seoul, Korea	1480	ANSI ONLY U
Hehr Glass Co; Chesaning, MI	1510	U
HGP Architectural Glass; Warrenton, MO	1421	U
Hoffer's, Inc.; Schofield, WI	1596	U
Indepent Insulating Glass Co; Bedford Park, IL	1669	U
Marvin Windows; Warroad, MN	1690	U
Nashville Tempered Glass; Nashville, TN	1467	U
Northwest Aluminum Products; Yakima, WA	1800	U
Northwestern Industries; Seattle, WA	1638	U
Perilstein Distributing Corp; Cheswick, PA	1785	U
PPG Industries; Carlisle, PA	249	U
PPG Industries; Fresno, CA	64	U
PPG Industries; Burlington, IA	1603	U
PPG Industries; Wichita Falls, TX	1112	U
Shaw Glass Co Inc; South Easton, MA	1034	U
Solar Seal South; Ashland, VA	1621	U
Spectrum Glass Prods; Clinton, NC	1073	ANSI ONLY U
Spectrum Glass Prods; Clinton, NC	1080	CPSC ONLY U
SPI Glass Corp; Claremore, OK	1362	U
Sterling Plumbing Group; Malvern, AR	1761	U
Sunbelt Glass, Inc; Tulsa, OK	1454	U
Swift Glass Co., Inc.; Elmira Heights, NY	1556	U
Taylor Products, Inc.; Payne, OH	1588	U
Tempered Glass Corp; Tampa, FL	1395	U
Tempered Glass, Inc; Austell, GA	862	U
Tempglass, Inc; Perrysburg, OH	592	U
Tempglass Eastern, Inc; Buford, GA	981	U
Tempglass Miami; Miami, FL	1744	U
Tempglass Southern, Inc; Grand Prairie, TX	1219	U
Thermaglas Inc; Saginaw, MI	1738	U
TRACO (Three Rivers Alum.); Warrendale, PA	1310	U
U S Precision Glass; Elgin, IL	1371	U
U S Precision Glass; Jefferson, TX	1286	U
U S Precision Glass; Lewisburg, OH	185	U
Viracon, Inc; Owatonna, MN	1403	U
Viracon West; Vacaville, CA	1571	U
Virginia Glass Products; Martinsville, VA	12	U
<b>1/4 inch tempered transparent glass</b>		
ACI Glass; Greensboro, NC	1643	U
ACI Glass Products Inc; Dallas, TX	402	U
ACI Glass Products; Santa Clara, CA	1496	U
ACI Glass; Santa Fe Springs, CA	1535	U

SGCC NO.MAX. SIZE  
CERTIFIED**TEMPERED TRANSPARENT GLASS - continued**  
**1/4 inch tempered transparent glass - continued**

AFG Industries; Bridgeport, WV	1794		U
AFG Industries; Greenland, TN	89		U
AFG Industries; Kingsport, TN	24		U
AFG Industries Inc; Spring Hill, KS	1705		U
AFG Glass Inc; Concord, Ontario, Canada	1489		U
All Team Glass & Mirror Ltd; Woodbridge, Ontario, CANADA	1756		U
American Flat Glass Dist; Alvarado, TX	1710		U
American Flat Glass Distrib; Fall River, MA	1520		U
American Flat Glass Distrib; Marietta, GA	1231		U
Anglass Industries; San Fernando, CA	1000	ANSI ONLY	U
Arch Aluminum & Glass Co; Austell, GA	1767	ANSI ONLY	U
Arch Tempered Glass; Orlando, FL	1528	ANSI ONLY	U
Cameron Glass Inc; Broken Arrow, OK	1780		U
Cardinal TG; Tomah, WI	1807	CPSC ONLY	U
Colonial Mirror & Glass; Brooklyn, NY	1165		U
Contour Industries; Surgoinsville, TN	1677		18" by 36"
Coraglass Inc; Reform, AL	1733		U
D & S Tempered Glass; Dallas, TX	1656		U
Donnelly Corp; Holland, MI	1688		30" by 76"
Downey Glass Co; Los Angeles, CA	514		U
Empire Glass, Inc; Bronx, NY	1399		U
Falconer Glass Industries; Falconer, NY	709		U
Falconer-Lewistown; Lewistown, PA	1629		U
Floral Glass & Mirror; Hauppauge, NY	1548		U
Free State Glass Industries; Warrenton, VA	1592		U
Gemtron Corp; Sweetwater, TN	1477		U
The Glass Factory; Ronkonkoma, NY	1460		U
Glasstemp, Inc.; Bensenville, IL	1382		U
Guardian Fabrication; Millbury, OH	1577	ANSI ONLY	U
Guardian Fabrication; Rogers, AR	1357		U
Guardian Fabrication; Webster, MA	662	ANSI ONLY	U
Guardian Industries; Carleton, MI	131	ANSI ONLY	U
Guardian Industries; Corsicana, TX	1251	ANSI ONLY	U
Guardian Industries; Fort Lauderdale, FL	40	ANSI ONLY	U
Guardian Industries; Kingsburg, CA	971	ANSI ONLY	U
Guardian Industries; Richburg, SC	1633	ANSI ONLY	U
Hamilton Glass Products; Vincennes, IN	57		U
Hankuk Glass Ind; Seoul, Korea	1413	ANSI ONLY	U
Hehr Glass Co; Chesaning, MI	1517		U
HGP Architectural Glass; Warrenton, MO	1448		U
Hoffer's, Inc.; Schofield, WI	1597		U
Indepent Insulating Glass Co; Bedford Park, IL	1670		U
Marvin Windows; Warroad, MN	1691		U
Milgard Tempering Inc; Tacoma, WA	1578		U
Nashville Tempered Glass; Nashville, TN	1417		U
Northwest Aluminum Products; Yakima, WA	1801		U
Northwestern Industries; Seattle, WA	1639		U
Perilstein Distributing Corp; Cheswick, PA	1786		U
PPG Industries; Carlisle, PA	382	ANSI ONLY	U
PPG Industries; Ford City, PA	70		U
PPG Industries; Burlington, IA	1604		U
PPG Industries; Wichita Falls, TX	1113	ANSI ONLY	U
Saint Gobain; The Netherlands	1393	ANSI ONLY	U
Shaw Glass Co Inc; South Easton, MA	1035		U
Solar Seal South; Ashland, VA	1622		U
Spectrum Glass Prods; Clinton, NC	1074	ANSI ONLY	U
Spectrum Glass Prods; Clinton, NC	1081	CPSC ONLY	U
SPI Glass Corp; Claremore, OK	1363		U
Sterling Plumbing Group; Malvern, AR	1762		U
Sunbelt Glass, Inc; Tulsa, OK	1455		U
Swift Glass Co., Inc.; Elmira Heights, NY	1557		U
Taylor Products, Inc.; Payne, OH	1589		U
Temp-Tech Industries, Inc; Chicago, IL	986		U
Tempered Glass Corp; Tampa, FL	337		U



**MAX. SIZE  
CERTIFIED****SGCC NO.****TEMPERED TRANSPARENT GLASS - continued****1/4 inch tempered transparent glass - continued**

Tempered Glass, Inc; Austell, GA	863		U
Tempglass, Inc; Perrysburg, OH	1420		U
Tempglass Eastern, Inc; Buford, GA	982		U
Tempglass Miami; Miami, FL	1745		U
Tempglass Southern, Inc; Grand Prairie, TX	1044		U
Thermaglas Inc; Saginaw, MI	1739		U
TRACO (Three Rivers Alum.); Warrendale, PA	1311		U
U S Precision Glass; Elgin, IL	1372		U
U S Precision Glass; Jefferson, TX	1287		U
U S Precision Glass; Lewisburg, OH	186		U
Viracon, Inc; Owatonna, MN	1404		U
Viracon West; Vacaville, CA	1572		U
Virginia Glass Products; Martinsville, VA	14		U

**5/16 inch tempered transparent glass**

Free State Glass Industries; Warrenton, VA	1684		U
Hankuk Glass Ind; Seoul, Korea	1481	ANSI ONLY	U
Spectrum Glass Prods; Clinton, NC	1075	ANSI ONLY	U
Spectrum Glass Prods; Clinton, NC	1082	CPSC ONLY	U
SPI Glass Corp; Claremore, OK	1812		U

**3/8 inch tempered transparent glass**

ACI Glass; Greensboro, NC	1644		U
ACI Glass Products Inc; Dallas, TX	1107	ANSI ONLY	U
ACI Glass Products; Santa Clara, CA	1497		U
ACI Glass; Santa Fe Springs, CA	1779		U
AFG Industries; Greenland, TN	90		U
All Team Glass & Mirror Ltd; Woodbridge, Ontario, CANADA	1757		U
American Flat GLass Dist; Alvarado, TX	1711		U
American Flat Glass Distrib; Fall River, MA	1521		U
American Flat Glass Distrib; Marietta, GA	1232		U
Arch Aluminum & Glass Co; Austell, GA	1768	ANSI ONLY	U
Arch Tempered Glass; Orlando, FL	1529	ANSI ONLY	U
Asahi Glass Co LTD; Tokyo, Japan	1770		U
Colonial Mirror & Glass; Brooklyn, NY	1166		U
D & S Tempered Glass; Dallas, TX	1657		U
Downey Glass Co; Los Angeles, CA	515		U
Empire Glass, Inc; Bronx, NY	1400		U
Falconer Glass Industries; Falconer, NY	1280		U
Floral Glass & Mirror; Hauppauge, NY	1549		U
Free State Glass Industries; Warrenton, VA	1593		U
Glasstemp, Inc.; Bensenville, IL	1383		U
Guardian Fabrication; Webster, MA	471	ANSI ONLY	U
Guardian Industries; Corsicana, TX	1253	ANSI ONLY	U
Guardian Industries; Richburg, SC	1634	ANSI ONLY	U
Hankuk Glass Ind; Seoul, Korea	1482	ANSI ONLY	U
Hoffer's, Inc.; Schofield, WI	1796		U
Perilstein Distributing Corp; Cheswick, PA	1787		U
Shaw Glass Co Inc; South Easton, MA	1036		U
Spectrum Glass Prods; Clinton, NC	1076	ANSI ONLY	U
Spectrum Glass Prods; Clinton, NC	1083	CPSC ONLY	U
SPI Glass Corp; Claremore, OK	1374		U
Sunbelt Glass, Inc; Tulsa, OK	1456		U
Swift Glass Co., Inc.; Elmira Heights, NY	1558		U
Taylor Products, Inc.; Payne, OH	1598		U
Tempered Glass Corp; Tampa, FL	348		U
Tempered Glass, Inc; Austell, GA	865		U
Tempglass, Inc; Perrysburg, OH	594		U
Tempglass Eastern, Inc; Buford, GA	1058		U
Tempglass Miami; Miami, FL	1746		U
Tempglass Southern, Inc; Grand Prairie, TX	1045		U
Thermaglas Inc; Saginaw, MI	1740		U

	<u>SGCC NO.</u>		<u>MAX. SIZE CERTIFIED</u>
<b>TEMPERED TRANSPARENT GLASS - continued</b>			
<b>3/8 inch tempered transparent glass - continued</b>			
Viracon, Inc; Owatonna, MN	1508		U
Viracon West; Vacaville, CA	1752		U
Virginia Glass Products; Martinsville, VA	93		U
<b>1/2 inch tempered transparent glass</b>			
ACI Glass; Greensboro, NC	1645		U
ACI Glass Products Inc; Dallas, TX	1108	ANSI ONLY	U
ACI Glass Products; Santa Clara, CA	1498		U
ACI Glass; Santa Fe Springs, CA	640		U
All Team Glass & Mirror Ltd; Woodbridge, Ontario, CANADA	1758		U
American Flat Glass Dist; Alvarado, TX	1712		U
American Flat Glass Distrib; Fall River, MA	1522		U
American Flat Glass Distrib; Marietta, GA	1406		U
Arch Aluminum & Glass Co; Austell, GA	1769	ANSI ONLY	U
Arch Tempered Glass; Orlando, FL	1530	ANSI ONLY	U
Colonial Mirror & Glass; Brooklyn, NY	1167		U
D & S Tempered Glass; Dallas, TX	1658		U
Downey Glass Co; Los Angeles, CA	516		U
Empire Glass, Inc; Bronx, NY	1401		U
Falconer Glass Industries; Falconer, NY	711		U
Floral Glass & Mirror; Hauppauge, NY	1550		U
Free State Glass Industries; Warrenton, VA	1594		U
The Glass Factory; Ronkonkoma, NY	1461		U
Glasstemp, Inc.; Bensenville, IL	1384		U
Guardian Fabrication; Webster, MA	1235	ANSI ONLY	U
Guardian Industries; Corsicana, TX	1803	ANSI ONLY	U
Hankuk Glass Ind; Seoul, Korea	1483	ANSI ONLY	U
Hoffer's, Inc.; Schofield, WI	1797		U
Perilstein Distributing Corp; Cheswick, PA	1788		U
Shaw Glass Co Inc; South Easton, MA	1037		U
Spectrum Glass Prods; Clinton, NC	1077	ANSI ONLY	U
Spectrum Glass Prods; Clinton, NC	1084	CPSC ONLY	U
Sunbelt Glass, Inc; Tulsa, OK	1457		U
Swift Glass Co., Inc.; Elmira Heights, NY	1559		U
Tempered Glass Corp; Tampa, FL	338		U
Tempered Glass, Inc; Austell, GA	866		U
Tempglass, Inc; Perrysburg, OH	595		U
Tempglass Eastern, Inc; Buford, GA	1059		U
Tempglass Miami; Miami, FL	1747		U
Tempglass Southern, Inc; Grand Prairie, TX	1046		U
Thermaglas Inc; Saginaw, MI	1741		U
Viracon, Inc; Owatonna, MN	1509		U
Viracon West; Vacaville, CA	1753		U
Virginia Glass Products; Martinsville, VA	94		U
<b>5/8 inch tempered transparent glass</b>			
Spectrum Glass Prods; Clinton, NC	1716	ANSI ONLY	U
Spectrum Glass Prods; Clinton, NC	1717	CPSC ONLY	U
<b>3/4 inch tempered transparent glass</b>			
ACI Glass Products Inc; Dallas, TX	1225	ANSI ONLY	U
All Team Glass & Mirror Ltd; Woodbridge, Ontario, CANADA	1782		U
Empire Glass, Inc; Bronx, NY	1402		U
Falconer Glass Industries; Falconer, NY	712		U
Floral Glass & Mirror; Hauppauge, NY	1551		U
Spectrum Glass Prods; Clinton, NC	1718	ANSI ONLY	U
Spectrum Glass Prods; Clinton, NC	1719	CPSC ONLY	U
Virginia Glass Products; Martinsville, VA	95		U
<b>TEMPERED PATTERNED GLASS</b>			
<b>3/16 inch tempered patterned glass</b>			
Perilstein Distributing Corp; Cheswick, PA	1790		U

	<u>SGCC NO.</u>		<u>MAX. SIZE CERTIFIED</u>
<b>SAFETY PLASTIC SHEET</b>			
<b>.080 inch through 0.125 inch acrylic</b>			
Flex-O-Glass, Inc; Dixon, IL	118		U
<b>TEMPERED BENT GLASS</b>			
<b>5/32 inch Tempered Bent Glass</b>			
Ardco, Inc; Chicago, IL	1563		U
<b>3/16 inch Tempered Bent Glass</b>			
Ardco, Inc; Chicago, IL	1564		U
Glasstemp, Inc.; Bensenville, IL	1808		U
<b>1/4 inch Tempered Bent Glass</b>			
Ardco, Inc; Chicago, IL	1565		U
Glasstemp, Inc.; Bensenville, IL	1809		U
<b>3/8 inch Tempered Bent Glass</b>			
Glasstemp, Inc.; Bensenville, IL	1536		U
<b>1/2 inch Tempered Bent Glass</b>			
Glasstemp, Inc.; Bensenville, IL	1533		U
<b>LAMINATED TRANSPARENT-BUTYRAL</b>			
<b>3/16 inch laminated transparent-butyral</b>			
Laminated Glass Corp; Telford, PA	1811		U
Northwestern Industries; Seattle, WA	1640		U
Pan Lam Industries; Bothell, WA	1647		U
Safelite Glass Corp; Wichita, KS	1360		U
Viracon, Inc; Owatonna, MN	1637		U
Viracon West; Vacaville, CA	1751		U
<b>7/32 inch laminated transparent-butyral</b>			
Falconer-Lewistown; Lewistown, PA	1282	ANSI ONLY	U
Guardian Industries; Upper Sandusky, OH	458	ANSI ONLY	U
Safelite Glass Corp; Wichita, KS	1173	ANSI ONLY	U
American Flat Glass Distrib; Marietta, GA	1810		U
Sumitec, Inc.; Benton Harbor, MI	1441	ANSI ONLY	U
<b>1/4 inch laminated transparent-butyral</b>			
American Flat Glass Distrib; Marietta, GA	1706		U
Falconer-Lewistown; Lewistown, PA	1284	ANSI ONLY	U
Globe-Amerada; Selma, AL	1668		U
Guardian Industries; Upper Sandusky, OH	487	ANSI ONLY	U
Laminated Glass Corp; Telford, PA	1652		U
Macdonald Mirror; Brampton, Ontario, CANADA	1651		U
Tempglass Eastern, Inc; Buford, GA	1771		U
<b>9/32 inch laminated transparent-butyral</b>			
Viracon, Inc; Owatonna, MN	1778		U
<b>5/16 inch laminated transparent-butyral</b>			
Tempglass Southern, Inc; Grand Prairie, TX	1700		U

	<u>SGCC NO.</u>		<u>MAX. SIZE CERTIFIED</u>
<b>LAMINATED TRANSPARENT-BUTYRAL - continued</b>			
<b>5/16 inch laminated transparent-butyral</b>			
Viracon, Inc; Owatonna, MN	1764		U
<b>3/8 inch laminated transparent-butyral</b>			
Falconer-Lewistown; Lewistown, PA	1315	ANSI ONLY	U
Tempglass Eastern, Inc; Buford, GA	1772		U
<b>1/2 inch laminated transparent-butyral</b>			
Falconer-Lewistown; Lewistown, PA	1316	ANSI ONLY	U
Sumitec, Inc.; Benton Harbor, MI	1699	ANSI ONLY	U
Tempglass Eastern, Inc; Buford, GA	1773		U
Tempglass Southern, Inc; Grand Prairie, TX	1649		U
<b>LAMINATED TRANSPARENT-RESIN</b>			
<b>1/4 inch laminated transparent-resin</b>			
Builders & Decorators; Ft. Lauderdale, FL	1667	ANSI ONLY	U
<b>LAMINATED PATTERNED-BUTYRAL</b>			
<b>3/16 inch laminated patterned-butyral (shallow)</b>			
Viracon, Inc; Owatonna, MN	1636		U
<b>7/32 inch laminated patterned-butyral (shallow)</b>			
Safelite Glass Corp; Wichita, KS	1666		U

**ACI GLASS**

2710 Patterson St  
Greensboro NC 27407

**AFG INDS INC**

PO Box 929  
Kingsport TN 37662

▲  
▲  
▲  
TEMPERED  
16 CFR 1201-C II  
ANSI Z97.1 1984  
1/8U SGCC-1390  
AFG 006  
-----  
BS 5206A

**ACI GLASS PRODUCTS INC**

12900 Nicholson Rd  
PO Box 815547  
Dallas TX 75381-5547

**TEMPERED SAFETY GLASS**

16CFR1201 CII  
ANSI Z97.1-1984 3/16"U  
SGCC 400

**AFG GLASS INC**

75 Doney Crescent  
Concord Ontario L4K 1P6  
CANADA



TEMPERED/TREMPÉ  
ANSI Z97.1 — 1984  
16 CFR 1201 II  
SGCC 1489 1/4 U  
-----  
AS 2 DOT 163 MO6  
CAN 2 12.1 8G

**ACI GLASS PRODUCTS**

750 Walsh Ave  
Santa Clara CA 95050



TEMPERED SAFETY GLASS  
16 CFR 1201 CAT. II  
ANSI Z97.1-1984  
SGCC 1494 3/16 U

**ALL TEAM GLASS & MIRROR LTD**

281 Hanlon Rd  
Woodbridge Ontario L4L 3R7  
CANADA

**ACI GLASS PRODUCTS INC**

9010 S Norwalk Blvd  
Santa Fe Springs CA 90670

**AMERICAN FLAT GLASS DIST**

3200 Austell Rd  
Marietta GA 30060

# AFGD

ANSI Z97.1-1984  
16CFR 1201-CII  
SGCC 1232 3/8" U

**ANGLASS INDS INC**  
12364 Gladstone Ave  
San Fernando CA 91342



**ASAHI GLASS CO LTD**  
c/o Global Link Inc  
3401 Pacific Ave  
Marina Del Rey CA 90292

**ARCH ALUMINUM & GLASS CO**  
1470 Dale Court  
Austell GA 30001

**BUILDERS & DECORATORS GLASS CO**  
810 N W 57th St  
Ft. Lauderdale, FL 33309

**BUILDERS & DECORATORS  
GLASS INC...**  
SGCC-1667-1/4U ANSI-Z971-1984  
LAMINATED SAFETY GLASS

**ARCH TEMPERED GLASS PRODUCTS**  
3320 Maggie Blvd  
Orlando FL 32811

**CAMERON GLASS INC**  
PO Box 471500  
Tulsa OK 74147-1500

**CAMERON GLASS  
SAFETY TEMPERED  
ANSI Z97.1-1984  
16 CFR 1201 CII  
SGCC-1736 1/8U**

**ARDCO INC**  
12400 S Laramie Ave  
Chicago IL 60658

**CARDINAL TG**  
1601 Rusch St  
Tomah WI 54660

**Ardco TemperBent**

ANSI Z97.1-1984  
16 CFR 1201-CII  
SGCC-1563 5/32U

**COLONIAL MIRROR & GLASS CORP**  
142 19th St  
Brooklyn NY 11232

**DONNELLY CORP**  
414 E 40th St  
Holland MI 49423-5368

**colonial mirror & glass corp.**

Glas Steel Tempered Safety Glass  
ANSI Z97.1-1984  
16 CFR 1201-II SGCC-1167 1/2U

**CONTOUR INDUSTRIES INC**  
Phipps Bend Rd  
PO Box 69  
Surgoinsville TN 37873

**DOWNEY GLASS CO**  
5631 Ferguson Dr  
Los Angeles CA 90022



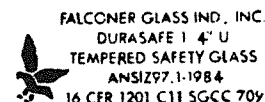
**CORAGLASS INC**  
Hwy 17 S  
PO Drawer 789  
Reform AL 35481

**EMPIRE GLASS INC**  
608 E 133rd St  
Bronx NY 10454

**EMPIRE GLASS INC.**  
**EGI - SAFGLAS**  
**"ANSI Z 97.1 - 1984"**  
**16 CFR 1201 II**  
**SGCC - 1401 ½ - U**

**D & S TEMPERED GLASS**  
2531 Royal Ln Suite 505  
Dallas TX 75229

**FALCONER GLASS INDS INC**  
500 S Work St  
Falconer NY 14733



**FALCONER-LEWISTOWN INC**  
One Belle Ave  
Lewistown PA 17044

**FALCONER**  
*Safetec*  
**LAMINATED**  
**ANSI Z97.1-1984**  
**SGCC #1284 1/4U**  
**1-85**

**FREE STATE GLASS INDS**  
Rt 6  
PO Box 302  
Warrenton VA 22186

**FREE STATE GLASS**  
**TEMPERED SAFETY GLASS**  
**ANSI Z97.1-1984 16 CFR 1201-I & II**  
**SGCC 1592 1/4" U**

**FLEX-O-GLASS INC**  
1100 N Cicero Ave  
Chicago IL 60651

*Warp's*  
**FLEX-O-GLAZE™**  
**ACRYLIC SAFETY GLAZING**  
**16 CFR 1201-C II 1000**  
**ANSI Z97.1-84 SGCC-113**

**GEMTRON CORP**  
New Highway 68  
PO Box 416  
Sweetwater TN 37874

**TEMPERED**  
**16 CFR 1201 C II**  
**ANSI Z97.1-1984**  
**3/16 U - SGCC-1201/1202**  
**GEMTRON 131 1985**

**FLORAL GLASS & MIRROR INC**  
895 Motor Pkwy  
Hauppauge NY 11788

**TemPLUS**  
FLORAL GLASS & MIRROR  
TEMPERED SAFETY GLASS  
ANSI Z97.1 1984  
16 CFR 1201-I-II  
SGCC-1553 7/32 U

**GLASS FACTORY INC**  
5012 Expressway Dr S  
Ronkonkoma NY 11779

**SUPER TEMP™**  
*Glass Factory*  
ANSI Z97.1-1984  
16 CFR 1201-II  
SGCC-1461-172U

**FOUR SEASONS SOLAR PRODUCTS**  
5005 Veterans Memorial Hwy  
Holbrook NY 11741

**GLASSTEMP INC**  
1001 Foster Ave  
Bensenville IL 60106

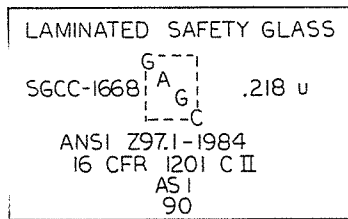
**FOUR SEASONS**  
**TEMPERED**  
**SAFETY GLASS**  
**16 CFR 1201-C II**  
**ANSI Z97.1-1984**  
**SGCC-1791-178U**

**GLASSTEMP**  
ANSI Z97.1-1984  
16 CFR 1201 C II  
SGCC-1382  
1/4" U 69



**GLOBE-AMERADA GLASS CO (ASSURANCE)**

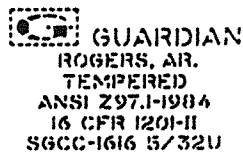
2001 Greenleaf Ave  
Elk Grove Village IL 60007

**HANKUK GLASS INDUSTRY LTD**

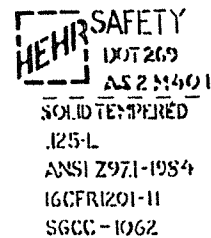
451 Yeo Ui Do-Dong  
Young Deung Po-Ku  
Seoul KOREA 150

**GUARDIAN FABRICATION INC**

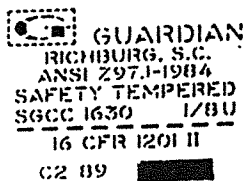
43043 W Nine Mile Rd  
Northville MI 48167

**HEHR GLASS CO**

200 S First St  
PO Box 28  
Chesaning MI 48616

**GUARDIAN INDUSTRIES CORP**

43043 W Nine Mile Rd  
Northville MI 48167

**HGP INDUSTRIES**

PO Box 368  
Warrenton MO 63383

**HORDIS BROTHERS**  
Tempered Safety Glass  
ANSI Z97.1-1984  
16 CFR 1201 II  
SGCC-1379 1/8 U

**HAMILTON GLASS PRODUCTS INC**

2000 Chestnut St  
PO Box 317  
Vincennes IN 47591

**TEMPER-TUF**  
HAMILTON GLASS  
VINCENNES IN  
ANSI Z97.1-1984  
1/8 U SGCC- 54  
16 CFR 1201 C II

**HOFFER'S INC**

Glass Fabricating Div  
5103 Janice Ave  
Schofield WI 54476

H-I-T  
TEMPERED GLASS  
ANSI Z97.1-1984  
16CFR 1201 CII  
SGCC 1595 1/8

**INDEPENDENT INSULATING GLASS CO**

6312 W 74th St  
PO Box 790  
Bedford Park IL 60499

**MILGARD TEMPERING INC**

1010 54th Ave E  
PO Box 11368  
Tacoma WA 98411-0368

**LAMINATED GLASS CORP**


525 Plymouth Rd Suite 310  
Plymouth Meeting PA 19462



**LAMINATED SAFETY GLASS**  
**16 CFR 1201 - II / ANSI Z97.1-1984**  
**SGCC 1652 1/4" U**  
-----  
**AS-1, M-21, DOT 33**

**NASHVILLE TEMPERED GLASS CORP**

1860 Air Lane Dr  
Nashville TN 37210

**N T G C**   
ANSI Z97.1-1984  
16 CFR 1201 CII  
SGCC 1416 1/8" U  
-----  
DOT 359 AS 2

**MACDONALD MIRROR INC**

1195 Clark Blvd  
Brampton Ontario L6T 3W4  
CANADA

**NORTHWEST ALUMINUM PRODUCTS INC**


1015 E Lincoln  
Yakima WA 98907

**MARVIN WINDOWS**

PO Box 100 Hwy 11 W  
Warroad MN 56763

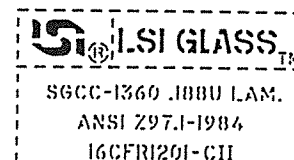
**NORTHWESTERN INDS INC**

2501 W Commodore Way  
Seattle WA 98199

**TEMPERED**  
**SAFETY GLASS**  
  
ANSI Z 97.1  
16 CFR 1201 - II  
SGCC - 1638 3/16 U  
-----  
CGSB - 12 - GP - 1

**O & W GLASS INDS INC**  
 1020 10th St  
 Everett WA 98201

**SAFELITE GLASS CORP**  
 PO Box 1879  
 Wichita KS 67201



**PAN LAM INDS**  
 1706 196th S E  
 Bothell WA 98012

**SAINT GOBAIN**  
 c/o Architectural Concepts Inc  
 5150 Walcutt Ct  
 Columbus OH 43228

**SAINT GOBAIN**  
 Tempered Safety Glass  
 ANSI Z97.1-1984  
 SGCC-1393 1/4 U

**PERILSTEIN DISTRIBUTING CORP**  
 100 Business Center Dr  
 Cheswick PA 15024

**SHAW GLASS CO INC**  
 55 Bristol Dr  
 S Easton MA 02375

**SOLAR TEMP.**  
 16 CFR 1201 11

**ANSI Z 97.1-1984**  
 1/4 U SGCC 1035

**PPG INDS INC**  
 1000 RIDC Plaza  
 PO Box 2811  
 Pittsburgh PA 15230

**SOLAR SEAL SOUTH INC**  
 100 S Leadbetter Rd  
 Ashland VA 23005

**PPG HERCULITE K**  
 TEMPERED SAFETY GLASS  
 16CFR1201 CII  
 .....  
 ANSI Z-97.1-1984 1/4U  
 SGCC-382 6 022585

**SPECTRUM GLASS PRODUCTS**

E Railroad St  
PO Box 408  
Clinton NC 28328

TUF-FLEX® FT 1/4"U  
TEMPERED SAFETY GLASS  
ANSI Z97.1-1984 SGCC-1074  
16 CFR 1201-1, 11 SGCC-1081



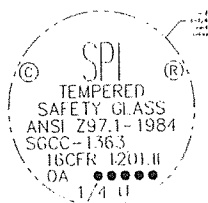
**SUNBELT GLASS INC**

8531 E 44th St  
Tulsa OK 74145

SUNTEMP® 1-87  
SAFETY TEMPERED  
ANSI Z97.1-1984  
16 CFR 1201 CII  
SGCC-1453 1/8 U

**SPI GLASS CORP**

PO Box 963  
Claremore OK 74018



**SWIFT GLASS CO INC**

131 W 22nd St  
Elmira Heights NY 14903

**STERLING PLUMBING GROUP**

1215 Industrial Lane  
Malvern AR 72104

**TAYLOR PRODUCTS INC**

N Laura St  
PO Box 77  
Payne OH 45880

**SUMITEC INC**

470 N Paw Paw Ave  
PO Box 188  
Benton Harbor MI 49022

**TEMP-TECH INDS INC**

6166 S Sayre  
Chicago IL 60638

**SUMITEC INC:**  
**SGCC 1441**  
**7/32 U**  
**ANSI Z97.1**  
**1984**

**TEMPERED GLASS CORP**  
6900 Adamo Dr  
Tampa FL 33619

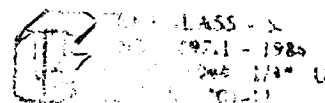
**TEMPGLASS MIAMI**  
17851 N W Miami Court  
Miami FL 33169

**TEMCO**  
**SGCC-337 .250U**  
**16 CFR 1201-II**  
**ANSI Z97.1 1984**

**TEMPERED GLASS INC**  
7160 Delta Circle  
Austell GA 30001

**TEMPGLASS SOUTHERN INC**  
1101 Fountain Pkwy  
Grand Prairie TX 75050

- Tuf-flex Glass FT 1/4" U I •
- TEMPERED SAFETY GLASS •
- ANSI Z97.1-1984 16 CFR 1201-1&11
- SGCC-321 SGCC-863 •



**TEMPGLASS INC**  
Ampoint  
291 M St  
Perrysburg OH 43551

**THERMAGLAS CORP**  
1930 S 23rd St  
PO Box 1426  
Saginaw MI 48605

**TEMPGLASS, INC.**  
**16 CFR 1201 CH**  
**ANSI Z97.1 - 1984**  
**SGCC 1420**  
**1/4 - U (1)**

**TEMPGLASS EASTERN INC**  
600 Heraeus Blvd  
Buford GA 30518

**TRACO (THREE RIVERS ALUM)**  
Cranberry Industrial Pk  
PO Box 805  
Warrendale PA 15095

**TEMPGLASS**  
**EASTERN**  
**ANSI Z97.1-1984**  
**16CFR 1201-II**  
**SGCC-979 1/4" U**  
**85**

  
**TIRACO VIEW-SAFE**  
**TEMPERED GLASS**  
**ANSI Z97.1-1984**  
**16 CFR 1201 II**  
**SGCC-1313 1/2U**

JULY 1, 1991

SGCC 51

**U S PRECISION GLASS**

1900 Holmes Rd  
Elgin IL 60123

**VIRACON INC**

800 Park Dr  
PO Box 248  
Owatonna MN 55060

**VIRACON**  
**TEMPERED**  
16 CFR 1201.11  
SGCC 1404 1/4" U  
ANSI Z97.1 1984  
1 85

**VIRACON WEST**

909 Aldridge Rd  
Vacaville CA 95688

**VIRGINIA GLASS PRODUCTS CORP**

PO Box 5431  
Martinsville VA 24115

**VIRGINIA GLASS**  
ANSI  
Z97.1-1984  
SGCC-14  
16 CFR 1201-II  
1/4-U  
TEMPERED  
**PRODUCTS**

"American National Standard for Safety Glazing Materials used in Buildings -  
Safety Performance Specifications and Methods of Test: ANSI Z97.1-1984"

Copies of ANSI Z97.1-1984 may be obtained from:

American National Standards Institute  
1430 Broadway  
New York, NY 10018

"Consumer Product Safety Commission Safety Standard for Architectural Glazing  
Materials - at Title 16, Part 1201 of the Code of Federal Regulations:  
16 CFR 1201"

Copies of 16 CFR 1201 may be obtained from:

Consumer Products Safety Commission  
5401 Westbard Avenue  
Bethesda, MD 20016



# safety glazing certification council

INDUSTRIAL PARK • 3933 US ROUTE 11  
P.O. BOX 2040  
CORTLAND, N.Y. 13045-0950  
PHONE 607-753-6711  
FAX 607-756-9891

Additional SGCC Certified Products Directories are available from the SGCC office for \$3.00/copy. A check or money order must accompany each order and be made payable to SGCC

\* \* \* \* \*

## SGCC DIRECTORY ORDER FORM

PLEASE SEND . . . \_\_\_\_\_ copies of SGCC Certified Products Directory at \$3.00/copy = \_\_\_\_\_ to:

\_\_\_\_\_  
Name

\_\_\_\_\_  
Company

\_\_\_\_\_  
Address

\_\_\_\_\_  
City State Zip Code





**SGCC APPROVED TESTING LABORATORIES  
APPROVED FOR TESTING IN THE ANSI AND CPSC  
CERTIFICATION PROGRAMS**

Architectural Testing Inc  
Two Interchange Pl  
York PA 17402-9899  
Attention: Mr David Moyer  
Telephone: 717-846-7700

Bowser-Morner Inc  
4518 Taylorsville Rd  
PO Box 51  
Dayton OH 45424  
Attention: Mr Robert J Rosencrans  
Telephone: 513-236-8805

Construction Consulting Laboratory Inc  
Western Division  
4751 W State St Ste E  
Ontario CA 91762  
Attention: Mr Ray Charland  
Telephone: 714-591-1789

ETL Testing Laboratories Inc  
5855-P Oakbrook Pkwy  
Norcross GA 30093  
Attention: Mr William Penue1  
Telephone: 404-446-7294

ETL Testing Laboratories Inc  
Ind Pk 3933 US Route 11  
Cortland NY 13045-0950  
Attention: Mr Kenneston R Bleck  
Telephone: 607-753-6711

Miami Testing Laboratory Inc  
1640 W 32nd Pl  
Hialeah FL 33012  
Attention: Mr James W Bailey  
Telephone: 305-822-1141

Pacific Inspection & Research Laboratory  
4076-148th Ave N E  
Redmond WA 98052  
Attention: Mr Ronald Carlson  
Telephone: 206-881-7668

Patzig Testing Laboratories Co Inc  
3922 Delaware Ave  
Des Moines IA 50313  
Attention: Mr Carl C Andreasen S E T  
Telephone: 515-266-5101

Southwestern Laboratories Inc  
2200 Gravel Dr; PO Box 1379  
Fort Worth TX 76101-1379  
Attention: Mr Roland S Jary P E  
Telephone: 817-284-7755



safety glazing certification council

ETL TESTING LABORATORIES, INC.

Industrial Park • 3933 US Route 11

P. O. Box 2040

Cortland, NY 13045-0950

ADDRESS CORRECTION REQUESTED

POSTAGE MUST BE  
AFFIXED HERE

U.S. POSTAGE  
PAID  
BULK RATE  
PERMIT NO. 37  
CORTLAND, N.Y.

IF NOT MAILED IN  
CORTLAND, NEW YORK