

safety glazing certification council

**July 1, 1998**

certified products directory  
safety glazing material used in buildings  
visit our website @ [sgcc.org](http://sgcc.org)

"American National Standard for Safety Glazing Materials used in Buildings - Safety Performance Specifications and Methods of Test: ANSI Z97.1-1984"

Copies of ANSI Z97.1-1984 may be obtained by calling (212) 642-4900 or by writing:

American National Standards Institute  
11 W 42nd St #13th Fl  
New York NY 10036-8002

"Consumer Products Safety Commission Safety Standard for Architectural Glazing Materials - at Title 16 Part 1201 of the Code of Federal Regulations: 16 CFR 1201"

Copies of 16 CFR 1201 may be obtained by calling (202) 512-1800 or by writing:

Superintendent of Documents  
PO Box 371954  
Pittsburg, PA 15250-7954

<b>TABLE OF CONTENTS</b>	<b>PAGE</b>
ANSI Z97.1-1984 .....	Inside Front Cover
CPSC 16 CFR 1201 .....	Inside Front Cover
Meetings of the Certification Committee .....	3
Roster.....	3
Program Concept .....	7
Procedural Guide .....	8
Certification Guidelines and Interpretations .....	12
SGCC Label Requirements.....	22
CPSC Act Labeling Requirements.....	23
Classified Tempered Glass Patterns .....	25
Certified Products (Numerical Sequence).....	26
Certified Products (Alphabetically By Plant ) .....	30
Certified Products (By Product Type).....	36
Licensees and Their Typical Labels .....	48
SGCC Directory Order Blank .....	55
SGCC Approved Laboratories .....	56

### MEETINGS OF THE CERTIFICATION COMMITTEE

The Certification Committee of the Safety Glazing Certification Council meets twice annually. Minutes of these meetings may be obtained by writing to the Administrative Manager of the Safety Glazing Certification Council (SGCC).

\*\*\*\*\*

Certification in this directory is current as of the date of issue; however, products may be certified or have certification removed from time to time. For the most current information, please contact the Administrative Manager of SGCC.

Any questions, comments, or requests for copies of this directory should be directed to the Administrative Manager of the Safety Glazing Certification Council:

\*\*\*\*\*

### ADMINISTRATION

Administrator:	Administrative Management Services PO Box 9 Henderson Harbor, NY 13651 Telephone: 315-938-7444 Telefax: 315-938-7453 E-mail: jgkent@gisco.net Web Page: sgcc.org
----------------	--

Administrative Staff:	John G. Kent, Administrative Manager Christine Flitcroft, Administrative Assistant
-----------------------	---

### ROSTER

#### SGCC BOARD OF DIRECTORS

#### REPRESENTING PUBLIC INTEREST

Mr. Mario J. Cellarosi  
14709 Plainfield Lane  
Germantown, MD 20874  
Telephone: 301-869-0428  
Telefax: 301-869-0428

Dr. George L. Graf, Jr.  
2642 Longwood Dr.  
Wilmington DE 19810  
Telephone: 302-475-3723  
Telefax: 302-475-3723

Mr. William Nugent  
Wiss, Janney, Elstner Associates, Inc.  
330 Pfingsten Rd  
Northbrook IL 60062-2095  
Telephone: 847-272-7400  
Telefax: 847-291-9599

Dr. Richard A. Behr, P.E.  
Dept of Arch. Eng. / Penn State  
104 Engineering Unit A  
State College, PA 16802-1416  
Telephone: 814-865-6394  
Telefax: 814-863-4789

REPRESENTING INDUSTRY

Mr. Al Hunsicker  
Warp Bros - Flex-O-Glass Inc  
1100 N Cicero Ave  
Chicago IL 60651  
Telephone: 773-261-5200

Mr Robert A. Moss  
Gemtron Vincennes  
2000 Chestnut St.  
PO Box 317  
Vincennes IN 47591  
Telephone: 812-882-2680  
Telefax: 812-882-7679

Mr. Carl Carmen  
Consolidated Glass Co.  
1150 N Cedar St.  
New Castle PA 16103  
Telephone: 724-658-4541  
Telefax: 724-654-0002

Mr. John G. Jablonski  
Guardian Industries/Fab.  
2300 Harmon Road  
Auburn Hills MI 48326  
Telephone: 248-340-2236  
Telefax: 248-340-2239

Honorary Non-Voting Lifetime Member

Mr. Norman Nitschke  
Glasstech. Inc.  
Ampoint Industrial Park  
995 Fourth Street  
Perrysburg OH 43551  
Telephone: 419-661-9500

SGCC OFFICERS

President  
First Vice President  
Secretary  
Treasurer

Robert Moss  
Mario Cellarosi  
William J. Nugent  
Richard Behr

LEGAL COUNSEL

William M. Hannay, Esq.  
Schiff Hardin & Waite  
7200 Sears Tower  
Chicago IL 60606  
Telephone: 312-258-5617  
Telefax: 312-258-5600

FINANCIAL AUDITORS

David Bowles  
Kane, Bowles & Moore  
209 Second Street  
Liverpool NY 13088  
Telephone: 315-451-6167  
Telefax: 315-451-6093

## SGCC CERTIFICATION COMMITTEE

<b>Licensee</b>	<b>Primary Member</b>	<b>First Alternate</b>	<b>Second Alternate</b>
ACI Distribution	Mike Grossman	Rick Dashley	
AFG Inds. Inc.-TN	Mark Cody	Thomas Mewbourne	
AFGD, Div. Of AFG Inds. Ltd.	Bill Bowmeester	Gord Kilday	Joel Harmer
AFGD, FPD	Mark Cody	Thomas Mewbourne	
All Team Glass & Mirror Ltd.			
American Flat Glass Dist.	Mark Cody		
American Glassmith/Sumiglass			
Anthony's Mfg. Inc.			
Arch Aluminum & Glass	Leon Silverstein	Dan M. Haney	John Haws
Architectural Safety Glass	George Sutorka		
Ardco Inc.	Andrew G. Menke		
Berkowitz, J.E.	Jim Stinsman		
Cardinal IG	Robert Spindler	Oak Moser	
Coastal Glass Distributors			
Colonial Mirror & Glass Corp.	A. Alex Weiner	George Weiner	
Commercial Insulating Glass	Jeff Winsler		
Consolidated Glass Corp.	Carl Carmen	Louis Merryman	
Contour Industries Inc.	Scott Stidham	Pat Murphy	
Coraglass Inc.	Patrick Conner		
D & S Tempered Glass			
D & W, Incorporated			
Dong Sung Glass Co.			
Downey Glass Co.	Richard Wright	Luis O. Soto	Robert Mastrapa
Edge Seal Technologies	Mark Hutchinson		
Efco Corp.			
Flex-O-Glass Inc.	Harold G. Warp	Alfred R. Hunsicker	
Floral Glass & Mirror	Charles Kaplanek	Paul Bieber	
Four Seasons Solar Products	Brian Fabian	Mark Nahvi	George Andra
Free State Glass Inds.	Conrad Miller		
Gardner Mirror Corporation	Tim Hall		
Gemtron-Sweetwater	Robert A. Moss	Jack Francis	Freida Watson
GGI Glass Distributors Corp.	Bud Hudgins	David S. Balik	
Glass Distributors of America			
Glass, Inc.	Mickey Wilkinson		
Globe-Amerada Glass Co.	Cheri Kellman	Walt Myers	
Guardian Fabrication Inc.			
Guardian Inds. Canada Corp.	John G. Jablonski	Mark J. Steffanina	Henry A. Gorry
Guardian Inds. Corp.			
Guardian Walled Lake Fab.			
Hoffer's Inc.	Tom Bartz	Tom Beese	Kevin Schulz
Interpane Glass Company	John Neunlist	Tony Lee	Jimmy Williams
Jarrett, Inc.			
Laminated Glass Corp.	Mike Lerner		
Marvin Windows	James Krahn	Doug Steinbring	
Mid Ohio Tempering			
Milgard Tempering Inc.	W. F. Hart	Tom Sugano	
Mirror Factory	Marian Carlson	Tom Carlson	Lance Smith
Nashville Tempered Glass			
North American Glass	Richard Wright	Bob Berleth	Shelly Mascola
Patio Enclosures Inc.			
Perilstein Distribution Corp.			

## SGCC CERTIFICATION COMMITTEE

<b>Licensee</b>	<b>Primary Member</b>	<b>First Alternate</b>	<b>Second Alternate</b>
Poma Glass & Specialty PPG Inds. Inc. Prelco Inc. S & S Glass Specialties Inc. SAFTI c/o O'Keefe's Shaw Glass Co. Shin IL Safety Glass Co., Ltd. Sovis SA Specialty Building Products Sterling Plumbing Group Summit Window & Patio Door Sunbelt Glass Inc. Swift Glass Co., Inc. Taylor Made Glass Ohio Inc. Tecnoglass Tempered Glass Inc. Tempglass Group Inc. Tempglass Group Inc. Traco (Three Rivers Alum) US Precision Glass Vegla c/o O'Keefe's Viracon Inc. Virginia Glass Products Corp. Vitrene April Inc. Westshore Glass	Pat Thompson Charles Richeson  M. Scott Foote Frederic P. Shaw  Richard Paschel  Fred Bruce Lee Dunlop Mike Kelley Daniel J. Burke  Douglas Sampsel Richard Wright  Robert P. Randall Perry Gregorcy Scott Foote Bill Knutsen Robert L. Brown  Bill Bellis	 Mike Bitterice  William O'Keefe Troy Johnson    Steve Jones  Anthony Speciale  Joel Wrenn Tim Kachmarik  William Deuschle Daniel Hill  Mike Diedrich Benjamin D. Beeler  Todd Elozory	Bob Fiedor  Stacy Westhoff Walter Gilpatrick      Wayne Brown  William Coddington  John Kalakos Michael Carnes  Roger Skluzacek A. Paul Stillman  Tucker Kruse

**Certification Committee Chairman - Mark Cody****Member by virtue of being a director:**

Public Interest	Mario Cellarosi
Public Interest	George L. Graf, Jr.
Public Interest	Richard A. Behr
Glasstech, Inc.	Norman Nitschke
Wiss, Janney, Elstner Assoc.	Bill Nugent

**Member from those without certified products**

Dupont Company	John W. Turnbull
----------------	------------------

**PROGRAM CONCEPT**

The Safety Glazing Certification Council (SGCC) is a non-profit corporation, established in 1971 by manufacturers of safety glazing products, building code officials, and others concerned with public safety.

SGCC maintains a program which provides for the certification of safety glazing materials found to be in compliance with one or both of the following specifications:

American National Standard for Safety Glazing Materials used in Buildings - Safety Performance Specifications and Methods of Test: ANSI Z97.1-1984

Consumer Product Safety Commission Safety Standard for Architectural Glazing Materials - codified at Title 16, Part 1201 of the Code of Federal Regulations: 16 CFR 1201

These specifications subject safety glazing materials, used in buildings and architectural products, to practical tests designed to reduce or eliminate unreasonable risk of death and injury when safety glazing material is broken by human contact.

The specification(s), to which a safety glazing material is certified by SGCC, is at the direction of the licensee.

SGCC responsibilities are threefold: to conduct an independent routine sampling and testing program; to approve and register the form of a Licensee's label; and to withdraw the Licensee's authority to use that label if certified products do not meet specification(s).

Management and control of SGCC is vested in a board of directors, half representing industry and half representing the public interest. To prevent industry dominance of SGCC actions, the public interest directors are empowered to veto any action of the board regardless of the number of directors present at a meeting.

The certification program uses approved testing laboratories under the supervision of a qualified administrator, retained by and responsible to SGCC, who is unaffiliated with any Licensee of safety glazing materials.

The Licensee of a product listed in this directory has certified that the labeled material complies with the applicable specification(s). Compliance of a certified product with the applicable specification(s) is checked periodically by an approved testing laboratory under the supervision of SGCC.

All manufacturers of safety glazing products are eligible and encouraged to apply for SGCC certification. Products may also be licensed by non-manufacturers. (See "Who can become a licensee.") However, products are not certified until a test to the applicable specification(s), conducted at an approved testing laboratory, indicates compliance, the SGCC certification invoice is paid, and SGCC License Agreements are properly executed.

Once certified by SGCC, a product is assigned an exclusive certification number to identify it and the plant at which it is made. After which, to insure continued adherence to the specification(s), SGCC independently selects, at least twice in each year, samples during unannounced visits to the manufacturing plant or randomly from the market place, to be tested to the applicable specification(s). Consequent to a test result showing compliance with the applicable specification(s) SGCC authorizes the continued use of the certification number and the product listing in this directory.

This directory is divided into four basic listings: the first is by numerical sequence of certified product numbers listing the Licensee holding that number; the second is of manufacturing Licensees listed alphabetically by plants and the approved products manufactured at those plants; the third is by non-manufacturing Licensee's and their approved products; the fourth is by product type listing all Licensees and locations approved for each product type. There is also an alphabetical listing, by manufacturers, illustrating a label typical of the Licensee. The table of contents lists various procedural and administrative information, as well as information as to where officers and directors may be located.

Upon request, information from SGCC concerning a statement of procedures or copies of minutes, are available to manufacturers, public interest groups, and individuals.



## PROCEDURAL GUIDE

### FOREWORD

The acceptance of a certified safety glazing material comes from the conviction such certification assures a high level of safety and quality; and that the integrity of the identifying mark or certification label is reliably maintained by a competent certifying agency.

Both ANSI Z97.1-1984 and 16 CFR 1201 provide sound technical basis for a high level of safety. With the addition of independent administration, plus periodic routine sampling and product evaluation a program of product certification is maintained which provides an independent third-party certification and testing program. The Certification Program described herein is predicated upon the concept of independent and impartial administration of the certification procedures which are incorporated in the SGCC license agreement.

The SGCC License Agreement is the governing document for the operation of the Certification Program. The Procedural Guide, which is not an extension of this document, is for information and guidance and serves to describe administrative procedures and to insure the uniform and equitable operation of the Certification Program.

### GENERAL INFORMATION

#### THE CERTIFICATION CONCEPT

The SGCC Certification Program is based on the conviction no standard of safety or quality is good without the continuous adherence of the licensees' certified products to that standard.

To buyers, specifiers, code officials and users, the SGCC certification label offers the Licensee's assurance his safety glazing material has been produced in conformance to ANSI Z97.1-1984 and/or 16 CFR 1201.

Federal law, many state statutes, municipal ordinances and building codes require glazing materials, installed in certain defined locations, comply with ANSI Z97.1-1984 and/or 16 CFR 1201.

#### WHO CAN BECOME A LICENSEE?

Any manufacturer of safety glazing materials or any party contracting for the manufacture of safety glazing materials is eligible, on a voluntary basis, to become a Licensee.

#### WHO CONDUCTS THE PROGRAM?

The Safety Glazing Certification Council, a non-profit corporation, is the sponsor of the Certification Program. SGCC supervises the Certification Program under which its' administrator periodically checks and reports compliance of the products having the SGCC certification label with the requirements of ANSI Z97.1-1984 and/or 16 CFR 1201.

### ADMINISTRATION

Administrative Management Services (AMS), is the independent administrator of the Certification Program. AMS maintains the SGCC office of certification and conducts the routine day-to-day business. All transactions are done in the name of SGCC.

#### HOW CAN YOU BECOME A LICENSEE?

The following must be accomplished before SGCC can certify an item of safety glazing material:

- a) The applicant signs two copies of the SGCC License Agreement (including notarization of the Affidavit, Appendix A) and sends these to SGCC. SGCC will countersign all copies and return one to the applicant. Non-manufacturing applicants must include the location and appropriate signatures of their manufacturer for each location.

- b) The applicant directs an SGCC approved testing laboratory, of its own choosing, to send SGCC one copy of a valid test report indicating the 'initial' or 'prototype' samples submitted for testing are in full and complete compliance with ANSI Z97.1 and/or 16 CFR 1201.
- c) The applicant sends to SGCC the six-month certification fee for each item to be certified. This fee must be submitted within 6 months of completion of item b). Failure to do so will result in the need to resubmit item b). (Revised 10/22/93)

Having received all of the above items, SGCC sends to the licensee the notice of product certification which includes an SGCC certification number. This number must be incorporated into the permanent label affixed to each piece of certified safety glazing material. The certified item will be listed in the next edition of the Certified Products Directory.

**HOW THE CERTIFICATION PROGRAM WORKS**

Safety glazing materials must meet or exceed the applicable specification(s) before they can be certified by SGCC.

All tests are conducted by SGCC approved testing laboratories. All laboratories, whose test reports are utilized by the Certification Program, shall be approved by the SGCC Certification Committee. Initial or prototype tests are performed at an approved testing laboratory selected by the licensee. An approved testing laboratory selected with the concurrence of the administrator by the licensee, tests routine evaluation samples.

**ADMINISTRATOR AUTHORIZES CERTIFICATION**

As sole judge of compliance with the applicable specification(s), the administrator authorizes a product which has been approved to be listed in the Certified Products Directory.

Licensees label safety glazing material, with the assigned SGCC number, within the limits of the product size tested. If 34 by 76 inches is the size of the initial or prototype test sample, certification is extended to all sizes and the permanent label contains the letter U, designating unlimited size. The letter L contained within the permanent label denotes certification is limited to the width and length of the initial or prototype test sample.

**PRODUCTS LISTED IN CERTIFIED PRODUCTS DIRECTORY**

Approved products are listed in a Certified Products Directory. The Directory is published every six months and is sent to door, sash and building products manufacturers, glazing contractors, home builders, architects, regulatory agencies, code-making groups, etc. Directory listings contain the licensee's name, product description and examples of a label typical of that permanently affixed by a licensee to each piece of safety glazing material certified by SGCC.

The administrator selects, at least twice in each year, samples of certified safety glazing material to be tested to the applicable specification(s). These samples are selected during unannounced visits to the manufacturing plant or from the market place.

**COMPLIANCE SAFEGUARDS**

**HOW IS COMPLIANCE ASSURED**

Any certified product determined, in the course of routine sampling and evaluation, not in compliance with the applicable specification(s), is subject to the removal of certification. The licensee is given 30-days in which to demonstrate, to the satisfaction of the Administrator, compliance and, if not, certification is automatically withdrawn at the end of the 30-day period.

## CHALLENGING A CERTIFIED PRODUCT

Complaints of non-compliance, from any source, will be investigated promptly by SGCC upon receipt of a written complaint and surety deposit. A minimum surety deposit of \$1,000 will be required for each complaint of non-compliance. The surety deposit will be assessed at the rate of \$350 per man-day plus the reasonable cost of travel and the maintenance entailed in resolving such incidents. Refunds of part or all of the surety deposit will be made when applicable. All costs involved will be paid from the complainant's surety deposit, unless the investigation proves non-compliance, in which case all costs will be borne by the licensee found to be in non-compliance.

## WITHDRAWAL OF CERTIFIED PRODUCT

Any, product which has been certified by SGCC, may be voluntarily withdrawn from the Certification Program by a licensee at any time.

## COSTS

### WHAT DOES THE PROGRAM COST?

The licensee pays, in advance, all projected fees for future routine evaluations to SGCC on a six-month basis. A licensee is invoiced for each certified item separately listed in the Certified Products Directory.

The certification period is from January 1 - June 30 or July 1 - December 31. The Licensee's initial invoice will be determined by the payment schedule as is listed below. All subsequent invoices will be for a full certification period.

<u>DATE</u>	<u>ADMINISTRATIVE/BUSINESS ACCT FEE</u>	<u>TEST FEE</u>
January 1 - March 31	100%	None
April 1 - June 30	50%	None
July 1 - September 30	100%	None
October 1 - December 31	50%	None

No testing is necessary during the initial 6-month period if prototype testing took place within 30 days of initial certification. Normal inspection may take place during this initial period, however.

Initial certification during the first 3 months of the initial 6 month period will require a selection in the first 3 months of the following 6 month certification period.

## CERTIFICATION PROGRAM DOCUMENTS AND AGREEMENTS

### LICENSE AGREEMENT

This agreement, incorporating independent program administration and routine periodic independent sampling and evaluation, governs the relationship between SGCC and the licensee.

Future amendments or revisions to the License Agreement will be recommended by the SGCC Certification Committee and enacted by the SGCC Board of Directors.

### EFFECTIVE DATE, DURATION AND TERMINATION

The License Agreement, effective from the date of its execution, has a validity of six months (adjustable to a January 1 to June 30 or a July 1 to December 31 basis) and, unless revoked by SGCC for causes set forth in the document, is automatically renewed for successive additional periods of six months, unless either party gives notice at least 60 days prior to the date of expiration that cancellation is requested.

Upon its proper execution and acceptance by SGCC, the pre-issued certification number bond informs a licensee of the certification number of an item to be certified in the future. If the licensee marks production with the certification number, prior to actual certification, the bond is forfeited to SGCC.

Upon its proper execution and acceptance by SGCC, the test release bond permits the continuation of certification of an item when production facilities are shut down. If the licensee does not notify SGCC, within one week of the resumption of production, the bond is forfeited to SGCC.

#### **ADMINISTRATIVE SERVICE AGREEMENT**

This agreement entered into by SGCC and AMS; governs the relationship between SGCC and AMS, the independent administrator. In general, it provides that the Administrator

- a) samples certified products routinely;
- b) has the right to witness any and all testing required by the program;
- c) reviews all test reports in order to determine compliance of the certified product with the applicable specification(s);
- d) inspects and approves all in-plant and test laboratory test facilities for use in this Certification Program (test laboratories are approved by the SGCC Certification Committee);
- e) publishes and mails the SGCC Certified Products Directory on or about January 1 and July 1 of each year;
- f) handles all routine clerical duties of SGCC with respect to certification matters;
- g) acts as SGCC treasurer, invoices licensees, maintains a bank account and disburses funds (fiscal reports are made to the SGCC Certification Committee);
- h) furnishes all testing, except for initial or prototype tests;
- i) attends all scheduled meetings of the SGCC Certification Committee and;
- j) in all of its actions, acts in the name of SGCC.

#### **CERTIFIED PRODUCTS DIRECTORY**

This directory contains a listing of the certified safety glazing materials of each licensee.

#### **CERTIFICATION LABEL**

The certification label, containing a number that refers to the listing in the Certified Products Directory, is permanently affixed to each piece of certified safety glazing material by the licensee. The listing, in the directory, provides a complete product description including licensee's name, location, etc.

#### **PROGRAM RESPONSIBILITY**

The SGCC Board of Directors has overall responsibility for the well being and acceptance of the Certification Program by industry, building officials and the public. It also bears corporate legal responsibility.

The SGCC Certification Committee has the responsibility for the general procedure and policy pertaining to the conduct of the Certification Program. As a part thereof, it:

July 1, 1998

SGCC 12

- a) establishes certification "guidelines;"
- b) determines, where a question is raised by a licensee or the Administrator, the applicability of the specification(s) in specific situations.
- c) approves testing laboratories;
- d) determines which specifications are to be designated effective for the purposes of product certification and the date or dates on which they become effective;
- e) recommends to the SGCC Board of Directors changes to be made in the license agreement.

## COMMUNICATIONS

In all matters concerning the administration and implementation of the SGCC certification program, correspondence may be directed to any of the following:

Mr. Robert A. Moss  
SGCC President  
c/o Gemtron Vincennes  
PO Box 317  
Vincennes, IN 47594  
Telephone: 812-882-2680

Mr. Mark B. Cody, Chairman  
SGCC Certification Committee  
c/o AFG Industries  
PO Box 929  
Kingsport, TN 37662  
Telephone: 615-229-7222

Mr. John G. Kent  
Program Administrator  
Administrative Management Services (AMS)  
P.O. Box 9  
Henderson Harbor, NY 13651  
Telephone: 315-938-7444

## CERTIFICATION GUIDELINES AND INTERPRETATIONS

For guidance in certifying safety glazing materials, the SGCC Certification Committee has adopted the following:

### GENERAL

#### G.1

Participation in the Certification Program will be on a January 1 to June 30 and July 1 to December 31 basis.

#### G.2

Tests for initial compliance of safety glazing materials to ANSI Z97.1-1984 and/or 16 CFR 1201 will be accepted from any testing laboratory approved by the SGCC Certification Committee.

#### G.3 (ANSI ONLY)

Paragraph (1) Section 5.1.3 of ANSI Z97.1-1984 is intended to apply to laminated, wired and organic coated glass only. Paragraph (2) is intended to apply to tempered glass only. Paragraph (3) is intended to apply to plastics only. Paragraph (4) is intended to apply to any safety glazing material.

#### G.4

For insulating glass units to be considered safety glazing material, each lite in the construction must be of safety glazing material.

#### G.5

The SGCC item number, when used as part of a permanent label designates the name of the licensee (participant) and also the location of the manufacturing plant.

## G.6

- a) All test specimens, except prototype samples, must be marked with the correct SGCC permanent label prior to testing in order to be considered a valid sample. It is the responsibility of the licensee to ensure the specimens being represented to the Administrator's representative are properly labeled. The administrator shall construe the absence of a correct permanent label as a failure to comply with the specifications. In such case of noncompliance, Sections a, c, and e of G.11 shall be followed. (Revised 3/16/90)
- b) The laboratory shall verify that the label has the correct SGCC number, designation of the applicable specification(s) and CPSC categories, nominal thickness, and certified size designation (U or L).
- c) The testing laboratory is to advise the administrator of any specimen to which the correct SGCC permanent label is not affixed. The testing laboratory will be instructed by the administrator not to test but hold the sample.
- d) The administrator will inform the licensee of the situation and direct (by letter) the testing laboratory to commence testing no later than 30 days hence. Until that time, the testing laboratory is instructed to make these specimens available to the licensee at their convenience (the specimens are to remain at the testing laboratory) in order that the licensee may point out or show them that in fact the SGCC permanent label is correct or agree that in fact the correct SGCC permanent label is not present. In cases of any dispute between the licensee and the testing laboratory the decision of the administrator shall be final. The licensee shall not mark specimens after receipt at the testing laboratory.

## (ANSI ONLY)

- e) As of July 1, 1985 the SGCC permanent label must contain ANSI Z97.1-1984 in order to be considered a correct permanent label for purposes of Guideline G.6.

## G.7 (ANSI ONLY)

Safety glazing materials for which certification is requested for indoor use only shall be subjected to the provisions of section 5.1 (impact tests) and 5.4 (aging tests) of ANSI Z97.1-1984 irrespective of the composition or construction of the glazing material. Like products and materials produced in the same manner as samples submitted for test shall be legibly and permanently marked in one corner with the words "Indoor Use Only" and the SGCC identification number.

## G.8 (ANSI ONLY)

After initial compliance with a sample size as stated in Paragraph 4.3, testing of other sizes which represent the sizes manufactured may be allowed, provided however that all sizes produced up to the size provided by Paragraph 4.3, ANSI Z97.1-1984 are exposed to selection for testing.

## G.8 (CPSC ONLY)

After initial compliance with a sample size as stated in Table 1, testing of other sizes which represent the sizes manufactured may be allowed, provided however that all sizes produced up to the size provided in the standard 16 CFR 1201 are exposed to selection for testing.

## G.9

Specimen sizes up to 34 inches by 76 inches shall be valid samples when independently obtained by the administrator for purposes of routine evaluation.

## G.10

In cases where the administrator samples and identifies specimens for routine evaluation of the licensee's premises or requests licensee's samples when none are available at the time of sampling:

- a) The licensee be permitted 6 weeks in which to effect delivery of said specimens to the administrator's designated testing laboratory.

- b) Failure to act as specified above shall be construed by the administrator as failure of the said specimens to comply with the specifications and the administrator shall act as provided for in license agreement A.6.

G.11

In cases where a routine evaluation sample fails to comply with the specifications:

- a) Written notice and an invoice shall be sent to the licensee by the administrator stating that within 30 days from the date of such notice the licensee must submit a retest sample to the testing laboratory selected by the licensee with the concurrence of the Administrator.

Certification shall be removed if the sample and payment are not received within the allotted 30 days or if the sample submitted fails to comply with the specifications.

- b) Within 3 months the administrator shall obtain an additional random sample for evaluation (in addition to the routine evaluation sample obtained twice a year). The administrator shall be certain that this additional sample is of recent production.
- c) At the option of the administrator, specimens submitted under a) above shall be either prototype size and pattern or identical to those previously sampled and of recent production.
- d) Certification shall be removed if the additional random sample obtained in b) above fails to comply with the specifications.
- e) All costs related to G.11 are to be borne by the licensee.
- f) If the retest procedure is required, all routine inspections and sample selections will continue. However, routine testing for the next period will be suspended pending the outcome of the retest procedure. If the product is decertified, the prepaid fee for routine testing for the next period (but not the Administrative and Contingency fees) will be refunded.

G.12

If a licensee who manufactures or contracts for the manufacture of a certified product outside the United States and Canada feels that in a particular instance that he will be unable to act as provided for in paragraph a) of SGCC Guideline G.11, he should notify the administrator. The administrator will then contact the chairman of the certification committee for a decision as to what action is to be taken.

G.13

In cases where a certified item is produced infrequently or in small quantities so as to make it difficult for the administrator to obtain routine evaluation samples, the licensee shall notify the administrator at least two weeks in advance of any production of such item.

G.14

The semi-annual invoicing date for certification fees shall be April 1 and October 1 of each year and the administrator is instructed to take those steps necessary to remove certification from Licensees for failure of payment. (Modified 10/20/89)

The Administrator shall initiate de-certification procedures on products for a given Licensee's failure to pay any monies due to SGCC within 60 days of invoice date. (Reference License Agreement A.2, A.7, A.12, and B.6.)

The invoice procedures will be as follows:

- a) Semi-Annual SGCC invoices will be mailed on or before April 1 and October 1 of each year. Payment is due May 1 and November 1 respectively.
- b) For all overdue invoices as of May 1 and November 1, a phone call will be made as a reminder and to insure that the Licensee received the invoice. A letter will follow the phone call.

- c) For all overdue invoices as of May 15 and November 15, an overnight letter, return receipt requested, will be sent warning of de-certification if payment is not received within 15 days.
- d) Letters of de-certification will be sent certified mail fifteen (15) days from the mailing of the overnight letter if payment is not received. With de-certification, a Licensee will no longer be an SGCC participant and its certified products will not appear in the CPD.

#### G.15

In the situation where a licensee desires to re-certify a product that previously had certification removed because of failure to comply with the specifications (label and thickness tolerances excepted), the product shall be routinely sampled four times during the first year. The licensee shall pay the costs involved.

#### G.16

The nominal thickness designations in SGCC authorized permanent labels for safety glazing materials may be shown in metric units. The thickness will be expressed in millimeters, limited to two decimal places and will have the suffix "mm."

#### G.17

All safety glazing materials that are not symmetrical from surface to surface shall be impacted two specimens on one side and two specimens on the other side except as noted in Guideline G.27. (Revised 4/21/94)

#### G.18

Certified and permanently labeled safety glazing materials such as laminated glass, wired glass, rigid plastic or organic coated glass, may be cut into smaller pieces by a distributor or installer after manufacture and it is not practical for each such smaller piece to bear a manufacturer's permanent label when finally installed in a building. When this is the case, the distributor or installer shall apply a permanent label to each piece which states his name and certifies that he cut the piece from material that was properly labeled in accordance with the requirements of SGCC.

For the purpose of this guideline, a permanent label is defined as one that will remain permanently legible and would be destroyed in attempts to remove it from the product.

#### G.19 (Deleted 10/20/89)

#### G.20

For certification purposes, a panel of glazing material composed of multiple components (such as leaded glass) may be tested and interpreted as a unit.

#### G.21

A pre-issued SGCC certification number shall be issued by the administrator upon receipt of a properly executed license agreement and a properly executed bond form in the amount of \$10,000. The pre-issued SGCC certification number, if not used by the licensee, will be terminated twelve months from the date of issue. The condition of the bond is such that if the licensee does not label any safety glazing material with the pre-issued certification number prior to formal certification then the bond shall be void.

#### G.22

In the case of wired glass (ANSI ONLY), plastics and organic coated glass certification of a patterned product may be extended to cover other patterns provided:

- a) The nominal thickness of the proposed alternate and all aspects other than pattern are the same as the certified product.
- b) The administrator of the certification program is provided with a copy of a prototype test from an approved laboratory, showing satisfactory compliance with the impact requirements of ANSI Z97.1-1984 and/or 16 CFR 1201 for each alternate pattern proposed.



- c) The certification committee is provided with a 6 by 6-inch sample of each proposed alternate for its record and file. This must be sent to the administrator of the certification program.

After admission under blanket certification covering patterned products, any such patterns available may be selected by the administrator for routine sampling and testing.

In the case where a routine evaluation sample, covered under a blanket certification, fails to comply with the specifications, the situation requires that the particular product be submitted for the retest sample required by Guideline G.11a and also that particular product be sampled by the administrator for the additional sample required by Guideline G.11b.

#### G.23

There may be instances when a production facility is temporarily inoperative. This could be caused by, but not limited to, equipment repair or replacement, labor difficulties, energy or material shortages or economic considerations. As a consequence, samples for routine testing may not be available for long periods. The licensee may desire to retain certification during the shutdown period. This shall be done as follows:

- a) Prior to or within 2 weeks after the shutdown, the licensee shall inform the SGCC administrator by certified mail.
- b) The SGCC administrator will immediately supply the licensee with test release bond forms for submission by the licensee. A separate bond shall be submitted for each certified product affected.
- c) Within 2 weeks after receipt of the bond forms, the licensee shall submit them to the SGCC administrator.
- d) During the period covered by the bond the licensee shall retain certification, contingent upon payment of normal certification fees and meeting all other licensee obligations. Bonds will terminate 90 days after acceptance by SGCC but may be renewed by the licensee any number of times. Renewal is an obligation of the licensee and requires all steps listed herein.
- e) Within one week after re-activation of the production facility the licensee shall 1) notify the SGCC administrator by certified mail and 2) submit samples from the first weeks production to an SGCC approved laboratory for testing. In cases where more than one certified product is produced with the same equipment, samples of each must be furnished for testing within the first month. These will be considered as the routine samples for retesting for the six months period during which they are submitted.
- f) Failure of the licensee to comply with any of the preceding shall be the basis for removal of certification from the affected products.

#### G. 24

When a licensee's production equipment will not produce a size of 34 by 76 inches and the licensee wishes to certify

- a) a size whose smaller dimension exceeds 34 inches, material shall be tested whose smaller dimension is 34 inches or b) a size whose larger dimension exceeds 76 inches, material shall be tested whose larger dimension is 76 inches.

#### G.25 (ANSI ONLY)

When a licensee specifically and voluntarily desires to use a SGCC permanent label on their product that denotes compliance with ANSI Z97.1-1966, ANSI Z97.1-1972, ANSI Z97.1-1975, and ANSI Z97.1-1984 or combination thereof, that they notify SGCC in writing of the certified item that they desire to so mark. SGCC will, at the request of the licensee, conduct compliance tests to ANSI Z97.1-1956, ANSI Z97.1-1972, ANSI Z97.1-1975 and ANSI Z97.1-1984 or combination thereof. A single set of four test specimens will be impacted to determine impact test requirements of all standards. Upon successful completion of compliance tests the safety glazing materials are permanently labeled and listed in the SGCC certified products directory as having met the requirements of 1966,

1972, 1975 and 1984 versions or combination thereof the ANSI Z97.1 standard. The licensee shall pay any costs involved.

## G.26

Any label that can be removed intact shall not be considered permanent and is not acceptable to SGCC.

## G. 27

A licensee, by executing a supplementary license agreement, can elect to be in both ANSI Z97.1-1984 and 16 CFR 1201 programs under one SGCC number, provided the licensee submits four specimens to be impact tested to ANSI Z97.1-1984 and one specimen to be impact tested to 16 CFR 1201 (all safety glazing materials that are not symmetrical from surface to surface shall be impacted one specimen on one side and one specimen on the other side for 16 CFR 1201). If any one specimen of the composite sample fails, the entire composite sample will be considered to have failed to comply with both specifications.

## G. 28

The administrator shall construe noncompliance with thickness tolerance as a failure to comply with the specifications. In such cases of noncompliance, Sections a, c, and e of G.11 shall be followed.

## G. 29

For the purposes of certification, the thickness requirements of Specification ASTM C1036 shall apply.

## G. 30

For certification purposes, the minimum thickness shall be 0.092 and the maximum thickness shall be 0.108 inches for 0.100 inch glass.

## G.31

For certification purposes, the nominal thickness of single strength patterned glass shall be 0.094 inches and thickness tolerances shall be plus 0.047 inches and minus 0.015 inches.

## G.32 (CPSC ONLY)

When testing to category II requirements, the administrator shall select specimens greater than 9 square feet in surface area.

## G.33

If a manufacturing plant for which a product is certified is sold, the new owner or licensee must take the following steps to maintain certification:

- a) Notify the administrator in writing of the sale as soon as possible (and in no event, later than 60 days) after the sale;
- b) Execute a new license agreement, if the new owner is not already a licensee; and
- c) Exercise the option of maintaining the original licensee's SGCC number(s) or requesting new numbers. If the new owner chooses to keep the existing number(s), the logo on the certified product must clearly distinguish it from the previous owner's.

The administrator shall arrange for the next routine sampling to take place within 6 months of the sale. If the plant is temporarily inoperative in connection with the sale, the provisions of G.23 shall also apply.

**TEMPERED TRANSPARENT GLASS**

## T.1

Certification of either flat glass or patterned glass will not cover the other except as noted in Guideline T.2. (Flat glass designates ground and polished plate, float and sheet glass.) When testing to the impact test criteria in 16 CFR 1201.4(a)(1), four specimens shall be tested or as noted in guideline G.27. (Revised 10/22/93)

T.2

Polished plate glass and the rough glass blank from which it is produced will be considered to be of equal nominal thickness. Certification of tempered flat glass will therefore be interpreted as including tempered rough plate blank.

T.3

Certification of regular tempered glass will also cover tinted, heat absorbing, and coated glasses of the same nominal thickness where the coating does not alter substantially the post-breakage behavior of the glass substrate. A "substantial alteration" is one that would render the coated tempered glass in non-conformance with the applicable safety glazing standards. Glasses of the same nominal thickness with a ceramic or other material applied as a continuous or partial coating to one or more surfaces are also covered. (Modified 04/02/92)

T.4

In cases where certified glass is normally not available for sampling, the licensee may make an overrun (of four lites of prototype size that are to be marked with the date of production) when the item is in normal production and these will be accepted by the administrator if other samples are not available. Otherwise, when production samples are not available, the administrator shall notify the licensee to submit prototype size samples to the administrator within six weeks.

T.5

Certification of any nominal thickness of tempered safety plate, float or sheet glass will also cover the other two types. ANSI Z97.1-1984 and 16 CFR 1201 do not require the permanent label on tempered safety glass to specify which type of glass is used. Nor is it required that the test specimens be identified in this regard.

T.6

Prototype test shall be conducted on bent specimens sampled from normal production run. The specimen size shall have a surface area of at least 50 percent of the maximum size for which certification is desired. Routine tests will be performed on bent specimens. The test apparatus shall be modified to clamp the vertical straight edges and to support the concave side of the curved edges. Impact shall be on the convex surface.

**TEMPERED PATTERNED GLASS**

TP. 1

For the purposes of certification, the nominal thickness of patterned, figured, or rough rolled glass are the common fractions found in ASTM C1036. The permanent label must contain this fraction on a metric or decimal dimension within the tolerance of this thickness as published in ASTM C1036. When testing to the impact test criteria in 16 CFR 1201.4(a)(1), four specimens shall be tested or as noted in guideline G.27. (Revised 10/22/93)

The patterns in each thickness will be classified as to the ratio of minimum to maximum thickness as follows:

<u>Patterned Depth Class</u>	<u>Ratio</u>
Shallow patterned glass	0.90 or above
Medium patterned glass	0.80 through 0.89
Deep patterned glass	0.79 or below

Certification will be by nominal thickness and patterned depth class. Any pattern in a certified thickness and patterned depth class is certified.

New or unlisted patterns must be submitted to the pattern subcommittee for classification and file prior to certification. After measurement, the new pattern will be assigned to a patterned depth class.

Certification of deep also covers medium and shallow patterns of the same nominal thickness.

Certification of medium also covers shallow patterns of the same nominal thickness.

TP. 2

The maximum thickness shall be recorded when measuring the thickness of patterned glass.

TP.3

For tempered patterned glass, one specimen must be weighed and the weight of ten square inches determined from the weight, width and height of that specimen to use for test purposes.

TP.4

For certification purposes, the nominal thickness of 210 tempered patterned glass shall be 0.210 inches and thickness tolerances shall be plus 0.031 inches and minus 0.016 inches.

TP.5

When medium patterned glass is not available for routine sampling, the licensee submitted specimens must be a medium pattern (a shallow pattern is not acceptable).

TP.6

When deep patterned glass is not available for routine sampling, the licensee submitted specimens must be a deep pattern (shallow or medium patterns are not acceptable).

**LAMINATED GLASS**

L.1

Certification of regular laminated glass will also cover tinted, heat absorbing and coated glasses, and clear or tinted interlayer, both flat and bent of the same nominal thickness. When testing to the impact test criteria in 16 CFR 1201.4(a)(1), four specimens shall be tested or as noted in guideline G.27. (Revised 10/22/93)

L.2

In cases where certified laminated glass is normally not available for sampling the licensee may make an overrun (of four lights of prototype size that are to be marked with the date of production) when the item is in normal production and these will be accepted by the administrator if other samples are not available. Otherwise, when production samples are not available the administrator shall notify the licensee to submit prototype size samples to the administrator within six weeks.

L.3

Certification of 7/32 inch laminated glass also covers SS/DS and vice versa.

L.4

When a laminated glass is certified, other laminated glasses having the same thickness or thickness' of glass and a greater thickness of plastic interlayer will be considered to be of equal nominal thickness and will be included in the certification.

L.5

Laminated safety glass need not be identified by type of base glass.

L.6

Thickness of the plastic interlayer shall be measured by the SGCC standard method.

L.7

For certification purposes the following thickness tolerances shall be used. Thickness tolerance shall apply only to the overall thickness. The plus tolerance shall be the sum of all the individual plus tolerances of each layer of the laminate. The minus tolerance shall be the sum of all of the individual minus tolerances of each layer of the laminate.

The tolerance of the plastic sheet interlayer shall be based on the nominal thickness of the interlayer with a plus tolerance of 0.002 and a minus tolerance of 0.004 inches.

The tolerance of resin cast interlayers shall be based on the nominal thickness of the interlayer with a plus tolerance of 0.015 and a minus tolerance of 0.005 inches. (Revised 3/16/90)

L.8

When a laminated annealed glass is certified, other laminated glasses having the same thickness or thickness' of heat strengthened or tempered glass and the same or greater thickness of plastic interlayer of the same chemical composition will be considered to be included in the certification.

L.9

When laminated glass is not available for routine sampling, the licensee submitted specimens must contain the identical thickness plastic interlayer that was contained in the prototype specimens.

**WIRED GLASS (ANSI ONLY)**

W.1

Certification of one polished wired glass may be applied to other polished wired glasses provided:

- a) The glass thickness of the candidate glass is nominally equal to the thickness of the glass that is certified.
- b) The wire diameter of the candidate glass is at least as great as the wire diameter in the glass that is certified.
- c) The spacing of the wires in the candidate glass is no greater than the spacing of the wires in the glass that is certified.
- d) SGCC has been presented with a test report indicating compliance of the candidate glass with the impact test requirements of ANSI Z97.1-1984

After admission under the blanket certification covering wired glasses, all wired glasses so certified, must be exposed to random sampling at each examination although only one will probably be selected for testing.

**PLASTICS - GENERAL (ANSI Only)**

P.1

Certification of one tint or color of rigid plastic will also cover other tints, colors, flat configurations or bent and formed configurations.

P.2

For certifying all plastics covering a range of thickness' , prototype impact tests are required of the minimum thickness and also of the maximum thickness (except that 0.250 inch thickness would be tested if the maximum thickness exceeds 0.250 inches). Only one certification number will be issued and shall be marked upon all thickness' . Routine evaluation samples are to be selected by the administrator from any of the certified thickness'.

P.3

The following thickness tolerances shall be used for certification purposes:

Outdoor use plastic materials Categories C-1 and C-2 cast Acrylic, (including continuously cast sheet): As specified in ASTM-D4802-88, Table 2 and Table 3.

Outdoor use plastic materials Categories M-1 and M-2 extruded Acrylic: As specified in ASTM-D4802-88 Table 2 plus or minus 5%.

Outdoor use plastic materials extruded polycarbonate: As specified in Military Specification MILP-46144; latest issue.

Indoor use plastic materials plus or minus 5% of nominal thickness.

P.4

The maximum thickness shall be recorded when measuring the thickness of patterned plastics.

P.5

Certification of either smooth plastic or patterned plastic will not cover the other.

**PLASTICS - EXTERIOR USE (ANSI Only)**

PE. 1 (ANSI ONLY)

Sheet plastics for exterior use must comply with the applicable specification.

PE. 2

Certification of plastics for exterior use shall be permitted prior to completion of ANSI Z97.1-1984 weathering tests (paragraph 5.3) provided that a considered expert opinion states that the infrared spectrogram indicates that the plastic is an acrylic or UV, inhibited polycarbonate of proven weatherability. Certification shall be removed if compliance with the weathering test is not demonstrated within six months of the certification date.

PE. 3

For all plastics requiring UV weathering tests an infrared spectrogram shall be obtained of all prototype weathering specimens. An infrared spectrogram shall be obtained of all routine evaluation samples and shall be compared with that of the prototype in lieu of conducting weathering test. The spectral scan shall be made using a minimum film thickness of 0.002 inches or its equivalent.

PE.4

When initial Charpy unnotched specimens do not break, then notched specimens shall be used for both initial and exposed Charpy impact testing. The specimens shall be notched prior to UV exposure and the notched surface shall be exposed to the UV.

**PLASTICS - INDOOR USE ONLY (ANSI Only)**

PI.1

Sheet plastics used in indoor applications only do not have to comply with paragraph 5.3 of ANSI Z97.1-1984 (UV Weathering), but must comply with paragraph 5.4.

PI.2

The permanent label authorized by SGCC must include "Indoor Use Only."

PI.3

For all indoor plastics requiring aging tests, an infrared spectrogram shall be obtained of all prototype aging specimens. An infrared spectrogram shall be obtained of all routine re-evaluation samples and shall be compared with that of the prototype in lieu of conducting aging tests. The spectral scan shall be made using a minimum film thickness of 0.002 inches or its equivalent.

**LEADED PATTERNED ANNEALED GLASS - (ANSI ONLY)**

LG. 1

Certification of one leaded patterned glass (annealed) may be extended to cover other patterns (on the glass surface) provided:

- a) The nominal thickness of the proposed alternate and all aspects other than pattern are the same as the certified product.
- b) The administrator of the certification program is provided with a copy of a prototype test from an approved laboratory, showing satisfactory compliance with the impact requirements of ANSI Z97.1-1984 for each alternate pattern proposed.
- c) The certification committee is provided with a 6 by 6 inch sample of each proposed alternate for its record and file. This must be sent to the administrator of the certification program.

- d) After admission under blanket certification covering leaded patterned glass (annealed), any such patterns available may be selected by the administrator for routine sampling.

**LG .2**

Certification of one diamond shaped leaded patterned glass (annealed) may be extended to cover other sizes of diamonds provided:

- a) All aspects of the product except diamond size is the same as the certified product.
- b) The administrator of the certification program is provided with a copy of a prototype test from an approved laboratory, showing satisfactory compliance with the impact requirements of ANSI Z97.1-1984 for each alternate size diamond proposed.
- c) The certification committee is provided with a 6 by 6 inch or a proper and representative sample of each proposed alternate for its record and file. This must be sent to the administrator of the certification program. After admission under blanket certification, any such size diamond available may be selected by the administrator for routine testing.

**LG .3**

For leaded diamond patterned glass (annealed) the tolerance for diagonal coming center dimensions shall be plus or minus 12 percent.

Prototype samples must have diagonal coming center dimensions 10 percent greater than nominal. Diamond size listed in the Certified Products Directory shall be nominal dimensions.

**ORGANIC COATED GLASS**

**AG.1**

Thickness of the applied plastic coating shall be measured by the SGCC standard method. When testing to the impact test criteria in 16 CFR 1201.4(a)(1), four specimens shall be tested or as noted in guideline G.27. (Revised 10/22/93). For organic coated - hybrid, reference memorandum 940329-1.

**AG .2**

The SGCC authorized permanent label, which complies with Guideline G.26 must be imprinted upon or applied to a surface of the plastic for all plastic coated annealed glasses.

**(ANSI ONLY)**

Prototype test shall be conducted on bent specimens of the surface area at least 50 percent of the maximum size for which certification is desired. Routine tests may be conducted on flat or bent specimens. The test apparatus shall be modified to clamp the vertical straight edges and to support the concave side for the curved edges. Two specimens shall have organic coating on the concave surface and two on the convex surface. Impact shall be on the convex surface.

**SGCC LABEL REQUIREMENTS**

**GENERAL**

Unless the SGCC certification label is permanently affixed to each piece of safety glazing material, it is not covered by the SGCC certification program.

The permanent labels illustrated elsewhere in this Certified Products Directory are examples of some of those found on safety glazing materials certified by SGCC.

The permanent label must contain the correct SGCC number, ANSI Z97.1-1984 and/or 16 CFR 1201 (and category), the nominal thickness, and the letter U or L, indicating certified size.

For labeling purposes, a line of demarcation shall separate those specifications covered by the SGCC number from any other specifications the licensee may wish to reference.

For purposes of Guideline G.6 "SGCC-xxx/yyy" shall be the only correct designation other than "SGCC-xxx" and "SGCC-yyy" when an identical item is in both the ANSI and CPSC programs per the following examples:

**EXAMPLES:**

ANSI Z97.1-1984  
16 CFR 1201 II  
SGCC-123/691 ¼ U

ANSI Z97.1-1984 SGCC - 123 ¼ U  
16 CFR 1201 II SGCC-691

The permanent label must be affixed to certified products **ONLY** at the time and place of manufacture.

The permanent label must be affixed **ONLY** to safety glazing materials of the licensee, which are certified in the SGCC certification program.

The permanent label must not be sold, transferred or otherwise disposed of in any manner other than being affixed to the licensee's certified product.

The permanent label must **NOT** be affixed to any product from which certification has been withdrawn or which is produced with a process basically different from the one used to manufacture the initial or prototype samples.

**ANSI (ONLY)**

"After having successfully passed the appropriate tests, like products and materials produced in the same manner as samples submitted per test shall be legibly and permanently marked in one corner with the characters 'ANSI Z97.1-1984 - INDOOR USE ONLY' and shall be marked also with the manufacturer's distinctive mark or designation." Quoted from ANSI Z97.1-1984

"Organic-coated glass materials shall be permanently marked on the organic coating with a label, including the phrase, 'GLAZE THIS SIDE IN' to indicate to the installer, inspector or user which side of the organic-coated glass should be exposed to the elements if there is a specific side that should be exposed." Quoted from ANSI Z97.1-1984

**CPSC (ONLY)**

"Any glazing material that for accelerated environmental durability tests meets only the requirements of 1201.4 (e)(ii)(c) entitled 'Plastic (indoor service)' shall bear the statement 'INDOOR USE ONLY' as a part of the permanent label." Quoted from 16 CFR 1201.

"Organic-coated glass that has been tested for environmental exposure from one side only must bear a permanent label on the coating stating 'GLAZE THIS SIDE IN' and shall bear in the central 50 percent of the surface in letters at least ¼" inch high: 'SEE PERMANENT LABEL FOR IMPORTANT MOUNTING INSTRUCTIONS.' The latter message shall be attached to either side of the glazing by any means which shall ensure the message will remain in place until installation." Quoted from 16 CFR 1201.

**CPSC ACT LABELING REQUIREMENTS**

The following information is provided for the guidance of the licensee and is not a requirement of the SGCC certification program.



The Consumer Product Safety Act defines a private labeler and permits private labeling as long as a manufacturer is identified, which can be in code. A "private labeler" means an owner of a brand or trademark on the label of a consumer product which bears a private label.

Per CPSC Advisory Opinion, dated April 12, 1984, a label on the material or product is acceptable as a certificate of compliance meeting the requirements of the CPSC if the label contains the same information required of a certificate of compliance. This information must include the date of manufacture, the place of manufacture, and the name of the manufacturer, importer, or private labeler. The certificate of compliance may also be a separate document which accompanies the material or product or is otherwise furnished to each distributor or retailer.

With respect to the CPSC requirement that the certificate of compliance name the manufacturer, a label meets that requirement if it includes a suitable identification of the manufacturer of the product (unless the product bears a private label), in which case it shall identify the private labeler and shall also contain a code mark which shall permit the seller of such product to identify the manufacturer thereof to the purchaser upon his request.

As set forth in SGCC certification guideline G.5, the SGCC number designates the name of the licensee and also the location of the manufacturing plant; however, it does not designate the date of manufacture.

**CLASSIFIED TEMPERED GLASS PATTERNS****1/8 inch shallow**

(01) P-516	(02) Luxlite	(03) Factorlite	(09) Spraylite	(32) Muralex
(34) Velvex	(36) Ribbed	(37) Aquatex	(38) Finetex	(39) Industrex
(82) Pattern 62	(83) Pointex	(86) Showerlite	(87) Heliolite	(117) Solatex
(120) Sunadex	(147) Solatex I	(150) Solatex II	(168) Pattern 50	(170) Crepe

**1/8 inch medium**

(04) Rattan	(05) Cotswold	(06) Patchwork	(07) Burlap	(08) Smooth Rough
(11) Flemish	(31) Skytex	(33) Seashell	(35) Flax	(52) Pattern 73
(56) Syenite	(57) Pattern 299	(154) Rain	(160) Model 10	(162) Model 11
(164) Model 12	(165) Spotswood	(167) Leaf		

**1/8 inch deep**

(10) Autumn

**5/32 inch shallow**

(59) Luxlite	(60) Factorlite	(64) Spraylite	(70) Mulalex	(72) Velvex
(74) Ribbed	(75) Aquatex	(76) Finetex	(81) Pattern 6	(88) Pattern 100
(118) Solatex	(121) Sunadex	(123) P-516	(124) Heliolite	(126) Pattern 62
(127) Mistron Ace	(128) Showerlite	(148) Solatex I	(151) Solatex II	(153) Flax
(156) Clar 104	(157) Model 10	(158) Pontilhado	(161) Model 11	(162) Model 12

**5/32 inch medium**

(61) Cotswold	(62) Burlap	(63) Smooth Rough	(66) Flemish	(69) Skytex
(71) Seashell	(73) Flax	(77) Pattern 73	(78) Syenite	(79) Pattern 229
(80) Pattern 76	(130) Cathedral	(146) Pattern 28	(155) Rain	

**5/32 inch deep**

(65) Autumn	(67) Oceanic	(68) Roundel	(173) Fluted
-------------	--------------	--------------	--------------

**3/16 inch shallow**

(50) Pattern 62	(51) P-516	(54) Showerlite	(116) Heliolite	(119) Solatex
(122) Sunadex	(125) Spraylite	(131) Industrex	(132) Velvex	(133) Aquatex
(134) Pattern 100	(135) Pattern 6	(136) Burlap	(137) Factrolite	(138) Satinlite
(139) Pluralite	(140) Flax	(141) Skytex	(142) Chinchilla	(149) Solatex I
(152) Solatex II	(159) Model 10	(171) Crepe	(172) Pebble	

**3/16 inch medium**

(58) Pattern 76	(143) Seashell	(144) Syenite	(145) Flemish	(176) Rain
-----------------	----------------	---------------	---------------	------------

**3/16 inch deep**

(12) Oceanic	(13) Roundel	(14) Lozenge	(174) Krystal Flutes
--------------	--------------	--------------	----------------------

**210 inch shallow**

(89) Velvex	(90) Muralex	(91) Industrex	(92) Aquatex	(93) Pattern 100
(94) Pattern 6	(95) Pattern 62	(96) Spraylite	(97) Burlap	(98) Factrolite
(99) Satinlite	(100) Luxlite	(101) J-3	(102) P-516	(103) Smooth Rough
(105) Cascade	(106) Pluralite	(108) Flax	(110) Skytex	(115) Chinchilla
(166) Sportswood				

**7/32 inch shallow**

(14) Velvex	(15) Muralex	(16) Industrex	(17) Aquatex	(18) Pattern 100
(19) Pattern 6	(20) Pattern 62	(21) Spraylite	(22) Burlap	(23) Factrolite
(24) Satinlite	(25) Luxlite	(26) J-3	(27) P-516	(28) Smooth Rough
(30) Cascade	(42) Pluralite	(44) Flax	(46) Skytex	(5) Textured Plate
(84) Chinchilla	(129) Orange Peel			

**7/32 inch medium**

(42) Seashell	(45) Beadex	(47) Syenite	(48) Flemish	(49) Textured Linex
---------------	-------------	--------------	--------------	---------------------

**7/32 inch deep**

(29) Lizenge	(53) Boardlite
--------------	----------------

**1/4 inch shallow**

(169) P-516

**1/4 inch medium**

(175) Fluted

Note: Numbers in parenthesis represent internal coding.

*Certified Products-Numerical Sequence*

<u>SGCC No.</u>		<u>SGCC No.</u>		<u>SGCC No.</u>	
12	Virginia Glass Products Corp.	970	Guardian Inds. Corp.	1369	US Precision Glass
14	Virginia Glass Products Corp.	971	Guardian Inds. Corp.	1370	US Precision Glass
24	AFG Inds. Inc.-TN	999	Anthony's Mfg. Inc.	1371	US Precision Glass
28	AFG Inds. Inc.-TN	1000	Anthony's Mfg. Inc.	1372	US Precision Glass
40	Guardian Inds. Corp.	1035	Shaw Glass Co.	1381	North American Glass
64	PPG Inds. Inc.	1036	Shaw Glass Co.	1382	North American Glass
89	AFG Inds. Inc.-TN	1037	Shaw Glass Co.	1383	North American Glass
90	AFG Inds. Inc.-TN	1039	Tempglass Group Inc.	1384	North American Glass
93	Virginia Glass Products Corp.	1041	Ardco Inc.	1390	AFG Inds. Inc.-TN
94	Virginia Glass Products Corp.	1042	Ardco Inc.	1403	Viracon Inc.
95	Virginia Glass Products Corp.	1050	US Precision Glass	1404	Viracon Inc.
118	Flex-O-Glass Inc.	1073	Interpane Glass Company	1405	American Flat Glass Dist.
131	Guardian Inds. Corp.	1074	Interpane Glass Company	1406	American Flat Glass Dist.
185	US Precision Glass	1075	Interpane Glass Company	1414	AFG Inds. Inc.-TN
186	US Precision Glass	1076	Interpane Glass Company	1416	Nashville Tempered Glass Corp.
188	US Precision Glass	1077	Interpane Glass Company	1417	Nashville Tempered Glass Corp.
220	AFG Inds. Inc.-TN	1107	ACI Distribution	1420	Tempglass Group Inc.
249	PPG Inds. Inc.	1108	ACI Distribution	1422	Gemtron-Sweetwater
250	PPG Inds. Inc.	1110	PPG Inds. Inc.	1424	Gemtron-Sweetwater
295	PPG Inds. Inc.	1111	PPG Inds. Inc.	1428	American Flat Glass Dist.
300	Guardian Fabrication Inc.	1112	PPG Inds. Inc.	1436	AFG Inds. Inc.-WV
328	US Precision Glass	1113	PPG Inds. Inc.	1452	US Precision Glass
382	PPG Inds. Inc.	1139	AFG Inds. Inc.-TN	1453	Sunbelt Glass Inc.
400	ACI Distribution	1143	AFG Inds. Inc.-TN	1454	Sunbelt Glass Inc.
402	ACI Distribution	1157	ACI Distribution	1455	Sunbelt Glass Inc.
471	Guardian Fabrication Inc.	1161	Guardian Inds. Corp.	1456	Sunbelt Glass Inc.
514	Downey Glass Co.	1179	ACI Distribution	1457	Sunbelt Glass Inc.
515	Downey Glass Co.	1201	Gemtron-Sweetwater	1462	Guardian Inds. Corp.
516	Downey Glass Co.	1216	Guardian Fabrication Inc.	1463	Guardian Inds. Corp.
520	Anthony's Mfg. Inc.	1225	ACI Distribution	1464	Guardian Inds. Corp.
587	AFG Inds. Inc.-TN	1230	American Flat Glass Dist.	1467	Nashville Tempered Glass Corp.
592	Tempglass Group Inc.	1231	American Flat Glass Dist.	1477	Gemtron-Sweetwater
594	Tempglass Group Inc.	1232	American Flat Glass Dist.	1485	AFGD, FPD
595	Tempglass Group Inc.	1235	Guardian Fabrication Inc.	1486	AFGD, FPD
598	AFG Inds. Inc.-TN	1248	Guardian Inds. Corp.	1489	AFGD, FPD
630	Downey Glass Co.	1249	Guardian Inds. Corp.	1496	ACI Distribution
631	Guardian Inds. Corp.	1250	Guardian Inds. Corp.	1497	ACI Distribution
633	Guardian Inds. Corp.	1251	Guardian Inds. Corp.	1498	ACI Distribution
640	ACI Distribution	1253	Guardian Inds. Corp.	1508	Viracon Inc.
654	US Precision Glass	1282	Guardian Inds. Corp.	1509	Viracon Inc.
662	Guardian Fabrication Inc.	1301	Guardian Inds. Corp.	1518	American Flat Glass Dist.
675	PPG Inds. Inc.	1303	Guardian Inds. Corp.	1519	American Flat Glass Dist.
676	PPG Inds. Inc.	1304	Guardian Inds. Corp.	1520	American Flat Glass Dist.
678	Downey Glass Co.	1308	Traco (Three Rivers Alum)	1521	American Flat Glass Dist.
862	Tempered Glass Inc.	1310	Traco (Three Rivers Alum)	1522	American Flat Glass Dist.
863	Tempered Glass Inc.	1311	Traco (Three Rivers Alum)	1523	American Flat Glass Dist.
865	Tempered Glass Inc.	1316	Guardian Inds. Corp.	1526	Arch Aluminum & Glass
866	Tempered Glass Inc.	1318	Guardian Inds. Corp.	1527	Arch Aluminum & Glass
933	Guardian Inds. Corp.	1332	Gemtron-Sweetwater	1528	Arch Aluminum & Glass
934	Guardian Inds. Corp.	1334	Gemtron-Sweetwater	1530	Arch Aluminum & Glass
935	Downey Glass Co.	1355	Guardian Fabrication Inc.	1531	Arch Aluminum & Glass
949	AFG Inds. Inc.-TN	1356	Guardian Fabrication Inc.	1535	ACI Distribution
955	AFG Inds. Inc.-TN	1357	Guardian Fabrication Inc.	1536	North American Glass
968	Guardian Inds. Corp.	1358	Guardian Fabrication Inc.	1546	Floral Glass & Mirror
969	Guardian Inds. Corp.	1359	Guardian Fabrication Inc.	1547	Floral Glass & Mirror

*Certified Products-Numerical Sequence*

<u>SGCC No.</u>		<u>SGCC No.</u>		<u>SGCC No.</u>	
1548	Floral Glass & Mirror	1644	ACI Distribution	1784	Perilstein Distribution Corp.
1549	Floral Glass & Mirror	1645	ACI Distribution	1785	Perilstein Distribution Corp.
1550	Floral Glass & Mirror	1652	Laminated Glass Corp.	1786	Perilstein Distribution Corp.
1551	Floral Glass & Mirror	1653	D & S Tempered Glass	1787	Perilstein Distribution Corp.
1555	Swift Glass Co., Inc.	1654	D & S Tempered Glass	1788	Perilstein Distribution Corp.
1556	Swift Glass Co., Inc.	1655	D & S Tempered Glass	1789	Perilstein Distribution Corp.
1557	Swift Glass Co., Inc.	1656	D & S Tempered Glass	1790	Perilstein Distribution Corp.
1558	Swift Glass Co., Inc.	1657	D & S Tempered Glass	1791	Four Seasons Solar Products
1559	Swift Glass Co., Inc.	1658	D & S Tempered Glass	1792	Shaw Glass Co.
1562	Arch Aluminum & Glass	1659	D & S Tempered Glass	1794	AFG Inds. Inc.-WV
1563	Ardco Inc.	1660	D & S Tempered Glass	1795	AFG Inds. Inc.-WV
1564	Ardco Inc.	1661	D & S Tempered Glass	1796	Hoffer's Inc.
1565	Ardco Inc.	1663	AFG Inds. Inc.-CA	1797	Hoffer's Inc.
1574	Guardian Fabrication Inc.	1664	AFG Inds. Inc.-CA	1798	Hoffer's Inc.
1575	Guardian Fabrication Inc.	1665	Guardian Inds. Corp.	1799	Summit Window & Patio Door
1576	Guardian Fabrication Inc.	1668	Globe-Amerada Glass Co. (Assurance)	1800	Summit Window & Patio Door
1577	Guardian Fabrication Inc.	1676	Contour Industries Inc.	1801	Summit Window & Patio Door
1578	Milgard Tempering Inc.	1677	Contour Industries Inc.	1802	Summit Window & Patio Door
1586	Taylor Made Glass Ohio Inc.	1678	Contour Industries Inc.	1803	Guardian Inds. Corp.
1587	Taylor Made Glass Ohio Inc.	1680	Contour Industries Inc.	1804	Cardinal TG
1588	Taylor Made Glass Ohio Inc.	1682	Arch Aluminum & Glass	1805	Cardinal TG
1589	Taylor Made Glass Ohio Inc.	1683	Guardian Inds. Corp.	1806	Cardinal TG
1590	Free State Glass Inds.	1689	Marvin Windows	1807	Cardinal TG
1591	Free State Glass Inds.	1690	Marvin Windows	1809	North American Glass
1592	Free State Glass Inds.	1691	Marvin Windows	1826	Guardian Inds. Corp.
1593	Free State Glass Inds.	1701	Marvin Windows	1827	Cardinal IG
1594	Free State Glass Inds.	1702	AFG Inds. Inc.-KS	1828	Cardinal IG
1595	Hoffer's Inc.	1703	AFG Inds. Inc.-KS	1829	Cardinal IG
1596	Hoffer's Inc.	1704	AFG Inds. Inc.-KS	1830	Cardinal IG
1597	Hoffer's Inc.	1705	AFG Inds. Inc.-KS	1831	Cardinal IG
1603	PPG Inds. Inc.	1708	American Flat Glass Dist.	1832	Cardinal IG
1604	PPG Inds. Inc.	1709	American Flat Glass Dist.	1833	Cardinal IG
1605	PPG Inds. Inc.	1710	American Flat Glass Dist.	1834	Cardinal IG
1606	PPG Inds. Inc.	1711	American Flat Glass Dist.	1835	Arch Aluminum & Glass
1607	Guardian Fabrication Inc.	1712	American Flat Glass Dist.	1841	Cardinal IG
1608	Downey Glass Co.	1713	American Flat Glass Dist.	1842	Cardinal IG
1609	Downey Glass Co.	1714	American Flat Glass Dist.	1843	Cardinal IG
1611	Downey Glass Co.	1723	Marvin Windows	1844	Cardinal IG
1616	Guardian Fabrication Inc.	1724	Marvin Windows	1845	Cardinal IG
1617	Sunbelt Glass Inc.	1728	ACI Distribution	1846	Cardinal IG
1618	Sunbelt Glass Inc.	1737	Guardian Inds. Corp.	1847	Colonial Mirror & Glass Corp.
1624	AFG Inds. Inc.-WV	1744	Tempglass Group Inc.	1848	Colonial Mirror & Glass Corp.
1627	Guardian Inds. Corp.	1745	Tempglass Group Inc.	1854	US Precision Glass
1628	Guardian Inds. Corp.	1746	Tempglass Group Inc.	1861	ACI Distribution
1629	Guardian Inds. Corp.	1747	Tempglass Group Inc.	1862	Hoffer's Inc.
1630	Guardian Inds. Corp.	1754	All Team Glass & Mirror Ltd.	1864	Sovis North America, Inc.
1631	Guardian Inds. Corp.	1755	All Team Glass & Mirror Ltd.	1865	Guardian Inds. Corp.
1632	Guardian Inds. Corp.	1756	All Team Glass & Mirror Ltd.	1866	Guardian Inds. Corp.
1633	Guardian Inds. Corp.	1757	All Team Glass & Mirror Ltd.	1867	Guardian Inds. Corp.
1634	Guardian Inds. Corp.	1758	All Team Glass & Mirror Ltd.	1868	Guardian Inds. Corp.
1635	Guardian Inds. Corp.	1765	Arch Aluminum & Glass	1870	Sunbelt Glass Inc.
1637	Viracon Inc.	1766	Arch Aluminum & Glass	1871	Shaw Glass Co.
1641	AFG Inds. Inc.-CA	1767	Arch Aluminum & Glass	1872	AFGD, Div. Of AFG Inds. Ltd.
1642	ACI Distribution	1768	Arch Aluminum & Glass	1873	AFGD, Div. Of AFG Inds. Ltd.
1643	ACI Distribution	1769	Arch Aluminum & Glass	1874	AFGD, Div. Of AFG Inds. Ltd.

*Certified Products-Numerical Sequence*

<u>SGCC No.</u>		<u>SGCC No.</u>		<u>SGCC No.</u>	
1875	AFGD, Div. Of AFG Inds. Ltd.	1964	Coraglass Inc.	2030	D & W, Incorporated
1879	Laminated Glass Corp.	1965	D & S Tempered Glass	2031	American Flat Glass Dist.
1880	Laminated Glass Corp.	1966	Guardian Inds. Canada Corp.	2034	Prelco Inc.
1881	Laminated Glass Corp.	1967	American Flat Glass Dist.	2035	Prelco Inc.
1882	Guardian Inds. Corp.	1968	Gardner Mirror Corporation	2036	Prelco Inc.
1883	Viracon Inc.	1970	Westshore Glass	2037	Prelco Inc.
1884	Viracon Inc.	1971	Westshore Glass	2042	Interpane Glass Company
1885	Guardian Walled Lake Fab.	1972	Westshore Glass	2043	Interpane Glass Company
1886	Guardian Inds. Corp.	1973	Westshore Glass	2044	Interpane Glass Company
1889	Commercial Insulating Glass Co.	1974	Westshore Glass	2045	Interpane Glass Company
1890	Commercial Insulating Glass Co.			2046	Prelco Inc.
1891	Commercial Insulating Glass Co.	1978	Westshore Glass	2047	Prelco Inc.
1892	Commercial Insulating Glass Co.	1979	Sterling Plumbing Group	2048	Prelco Inc.
1894	Commercial Insulating Glass Co.	1980	Sterling Plumbing Group	2049	Prelco Inc.
1895	Arch Aluminum & Glass	1981	Sterling Plumbing Group	2050	Edge Seal Technologies
1901	Efco Corp.	1982	Sterling Plumbing Group	2051	Edge Seal Technologies
1902	Efco Corp.	1983	Sterling Plumbing Group	2052	Edge Seal Technologies
1908	Coraglass Inc.	1984	Sterling Plumbing Group	2053	North American Glass
1909	Coraglass Inc.	1985	Cardinal CG	2054	American Flat Glass Dist.
1910	Coraglass Inc.	1986	Cardinal CG	2055	Edge Seal Technologies
1911	Coraglass Inc.	1987	Cardinal CG	2056	Patio Enclosures Inc.
1914	Architectural Safety Glass	1988	Cardinal CG	2057	Patio Enclosures Inc.
1915	Mirror Factory	1989	Berkowitz, J.E.	2058	Patio Enclosures Inc.
1919	ACI Distribution	1990	Berkowitz, J.E.	2059	Patio Enclosures Inc.
1921	Cardinal CG	1991	Berkowitz, J.E.	2060	Consolidated Glass Corp.
1922	Cardinal CG	1992	Sovis North America, Inc.	2062	Vitrierie April Inc.
1923	Cardinal CG	1993	Tecnoglass	2063	Vitrierie April Inc.
1924	Cardinal CG	1994	Tecnoglass	2065	D & S Tempered Glass
1925	AFG Inds. Inc.-CA	1995	Tecnoglass	2066	Summit Window & Patio Door
1929	Colonial Mirror & Glass Corp.	1996	Vitrierie April Inc.	2067	Cardinal CG
1931	Gardner Mirror Corporation	1997	Vitrierie April Inc.	2068	Cardinal CG
1932	Gardner Mirror Corporation	1998	Consolidated Glass Corp.	2069	Cardinal CG
1933	Gardner Mirror Corporation	1999	Consolidated Glass Corp.	2070	Cardinal CG
1934	Gardner Mirror Corporation	2002	Consolidated Glass Corp.	2071	Cardinal CG
1935	Gardner Mirror Corporation	2003	Consolidated Glass Corp.	2074	Downey Glass Co.
1936	Gardner Mirror Corporation	2004	Consolidated Glass Corp.	2075	Downey Glass Co.
1937	Gardner Mirror Corporation	2005	Consolidated Glass Corp.	2077	ACI Distribution
1938	Sovis North America, Inc.	2006	Ardco Inc.	2078	Arch Aluminum & Glass
1939	Shaw Glass Co.	2007	Cardinal CG	2079	Arch Aluminum & Glass
1945	AFGD, FPD	2008	Cardinal CG	2080	Arch Aluminum & Glass
1946	Guardian Inds. Corp.	2009	Cardinal CG	2081	Arch Aluminum & Glass
1947	Guardian Inds. Corp.	2010	Cardinal CG	2082	Arch Aluminum & Glass
1949	Viracon Inc.	2011	Cardinal CG	2083	Arch Aluminum & Glass
1950	Viracon Inc.	2012	Cardinal CG	2084	Arch Aluminum & Glass
1951	Ardco Inc.	2013	Cardinal CG	2085	Arch Aluminum & Glass
1953	SAFTI c/o O'Keeffe's	2014	Laminated Glass Corp.	2086	Arch Aluminum & Glass
1954	SAFTI c/o O'Keeffe's	2015	Prelco Inc.	2087	Arch Aluminum & Glass
1956	American Flat Glass Dist.	2016	American Flat Glass Dist.	2088	Arch Aluminum & Glass
1957	American Flat Glass Dist.	2020	Guardian Inds. Corp.	2089	Arch Aluminum & Glass
1958	American Flat Glass Dist.	2021	Guardian Inds. Corp.	2090	Arch Aluminum & Glass
1959	American Flat Glass Dist.	2022	Guardian Inds. Corp.	2091	Arch Aluminum & Glass
1960	American Flat Glass Dist.	2023	Guardian Inds. Corp.	2092	Arch Aluminum & Glass
1961	American Flat Glass Dist.	2027	D & W, Incorporated	2093	Arch Aluminum & Glass
1962	Coraglass Inc.	2028	D & W, Incorporated	2094	Arch Aluminum & Glass
1963	Coraglass Inc.	2029	D & W, Incorporated	2095	Arch Aluminum & Glass

*Certified Products-Numerical Sequence*

<u>SGCC No.</u>		<u>SGCC No.</u>		<u>SGCC No.</u>	
2096	Arch Aluminum & Glass	2158	Mid Ohio Tempering		
2097	Arch Aluminum & Glass	2159	Mid Ohio Tempering		
2098	Arch Aluminum & Glass	2160	American Flat Glass Dist.		
2099	Arch Aluminum & Glass	2161	Arch Aluminum & Glass		
2100	Arch Aluminum & Glass	2162	Arch Aluminum & Glass		
2101	Coastal Glass Distributors	2163	Arch Aluminum & Glass		
2102	Coastal Glass Distributors	2164	Arch Aluminum & Glass		
2103	Coastal Glass Distributors	2165	Arch Aluminum & Glass		
2104	Coastal Glass Distributors	2166	Cardinal LG		
2105	Coastal Glass Distributors	2167	Cardinal LG		
2106	Coastal Glass Distributors	2169	Cardinal LG		
2109	Coastal Glass Distributors	2170	Mid Ohio Tempering		
2110	Arch Aluminum & Glass	2171	Summit Window & Patio Door		
2111	Arch Aluminum & Glass	2172	Summit Window & Patio Door		
2112	Arch Aluminum & Glass	2174	American Glassmith/Sumiglass		
2113	Arch Aluminum & Glass	2175	American Glassmith/Sumiglass		
2114	Arch Aluminum & Glass	2176	Cardinal IG		
2115	Arch Aluminum & Glass	2177	Cardinal IG		
2116	Arch Aluminum & Glass	2178	Cardinal IG		
2117	Guardian Inds. Corp.	2179	Cardinal IG		
2118	Jarrett, Inc.	2180	Arch Aluminum & Glass		
2119	Jarrett, Inc.	2181	Arch Aluminum & Glass		
2120	Jarrett, Inc.	2182	Virginia Glass Products Corp.		
2121	Specialty Building Products	2183	S & S Glass Specialties Inc.		
2122	Glass Distributors of America	2184	S & S Glass Specialties Inc.		
2123	Glass Distributors of America	2185	Glass, Inc.		
2124	Glass Distributors of America	2186	Glass, Inc.		
2125	Glass Distributors of America	2187	Glass, Inc.		
2126	Glass Distributors of America	2188	Glass, Inc.		
2127	Glass Distributors of America	2196	American Flat Glass Dist.		
2128	Glass Distributors of America	2197	American Flat Glass Dist.		
2133	Tecnoglass	2198	American Flat Glass Dist.		
2134	Tecnoglass	2199	American Flat Glass Dist.		
2135	Tecnoglass	2200	American Flat Glass Dist.		
2136	North American Glass	2201	American Flat Glass Dist.		
2137	North American Glass	2202	Nashville Tempered Glass Corp.		
2139	Glass Distributors of America	2203	Cardinal IG		
2140	Guardian Walled Lake Fab.	2204	Cardinal IG		
2141	Guardian Walled Lake Fab.	2205	Cardinal IG		
2142	Guardian Walled Lake Fab.	2207	Poma Glass & Specialty Windows, Inc.		
2143	Efco Corp.	2225	GGI Glass Distributors Corp.		
2144	Coraglass Inc.	2226	GGI Glass Distributors Corp.		
2145	Coraglass Inc.	2227	GGI Glass Distributors Corp.		
2146	Cardinal CG	2228	GGI Glass Distributors Corp.		
2147	Cardinal CG	2230	Dong Sung Glass Co.		
2148	Cardinal CG	2236	Colonial Mirror & Glass Corp.		
2149	Arch Aluminum & Glass	2237	Colonial Mirror & Glass Corp.		
2150	Arch Aluminum & Glass	2238	Colonial Mirror & Glass Corp.		
2151	Arch Aluminum & Glass	2240	Cardinal LG		
2152	Arch Aluminum & Glass	2248	Sovis North America, Inc.		
2153	Arch Aluminum & Glass				
2154	Prelco Inc.				
2155	Prelco Inc.				
2156	Mid Ohio Tempering				
2157	Mid Ohio Tempering				

*Certified Products-Alphabetical By Plant*

SGCC#	TEST STD	INCH	(MM)	TYPE	MAX SIZE CERTIFIED	SGCC#	TEST STD	INCH	(MM)	TYPE	MAX SIZE CERTIFIED
<b>ACI Distribution ; Dallas, TX</b>						<b>All Team Glass &amp; Mirror Ltd. ; Woodbridge, ON</b>					
1919	COMPOSITE	1/8	3.0	TTG	U	1754	COMPOSITE	5/32	4.0	TTG	U
400	COMPOSITE	3/16	5.0	TTG	U	1755	COMPOSITE	3/16	5.0	TTG	U
402	COMPOSITE	1/4	6.0	TTG	U	1756	COMPOSITE	1/4	6.0	TTG	U
1107	COMPOSITE	3/8	10.0	TTG	U	1757	COMPOSITE	3/8	10.0	TTG	U
1108	COMPOSITE	1/2	12.0	TTG	U	1758	COMPOSITE	1/2	12.0	TTG	U
1225	COMPOSITE	3/4	19.0	TTG	U	<b>American Flat Glass Dist. ; Alvarado, TX</b>					
1728	COMPOSITE	3/16	4.8	TPG (s)	U	1708	COMPOSITE	1/8	3.0	TTG	U
<b>ACI Distribution ; Greensboro, NC</b>						1709	COMPOSITE	3/16	5.0	TTG	U
1642	COMPOSITE	3/16	5.0	TTG	U	1710	COMPOSITE	1/4	6.0	TTG	U
1643	COMPOSITE	1/4	6.0	TTG	U	1711	COMPOSITE	3/8	10.0	TTG	U
1644	COMPOSITE	3/8	10.0	TTG	U	1712	COMPOSITE	1/2	12.0	TTG	U
1645	COMPOSITE	1/2	12.0	TTG	U	1713	COMPOSITE	5/32	4.0	TPG (s)	U
2077	COMPOSITE	3/16	4.8	TPG (s)	U	1714	COMPOSITE	3/16	4.8	TPG (s)	U
<b>ACI Distribution ; Santa Clara, CA</b>						<b>American Flat Glass Dist. ; Fall River, MA</b>					
1496	COMPOSITE	1/4	6.0	TTG	U	1518	COMPOSITE	1/8	3.0	TTG	U
1497	COMPOSITE	3/8	10.0	TTG	U	1519	COMPOSITE	3/16	5.0	TTG	U
1498	COMPOSITE	1/2	12.0	TTG	U	1520	COMPOSITE	1/4	6.0	TTG	U
<b>ACI Distribution ; Santa Fe Springs, CA</b>						1521	COMPOSITE	3/8	10.0	TTG	U
1157	COMPOSITE	3/16	5.0	TTG	U	1522	COMPOSITE	1/2	12.0	TTG	U
1535	COMPOSITE	1/4	6.0	TTG	U	2160	COMPOSITE	5/32	4.0	TPG (s)	U
1179	COMPOSITE	3/8	10.0	TTG	U	1523	COMPOSITE	3/16	4.8	TPG (s)	U
640	COMPOSITE	1/2	12.0	TTG	U	<b>American Flat Glass Dist. ; Hebron, OH</b>					
1861	COMPOSITE	1/8	3.0	TPG (s)	U	2196	COMPOSITE	1/8	3.0	TTG	U
<b>AFG Inds. Inc.-CA ; Victorville, CA</b>						2197	COMPOSITE	3/16	5.0	TTG	U
1664	COMPOSITE	1/8	3.0	TTG	U	2198	COMPOSITE	1/4	6.0	TTG	U
1641	COMPOSITE	5/32	4.0	TTG	U	2199	COMPOSITE	3/8	10.0	TTG	U
1663	COMPOSITE	3/16	5.0	TTG	U	2200	COMPOSITE	1/2	12.0	TTG	U
1925	COMPOSITE	1/4	6.0	TTG	U	2201	COMPOSITE	3/16	4.8	TPG (s)	U
<b>AFG Inds. Inc.-KS ; Spring Hill, KS</b>						<b>American Flat Glass Dist. ; Marietta, GA</b>					
1702	COMPOSITE	1/8	3.0	TTG	U	1405	COMPOSITE	1/8	3.0	TTG	U
1703	COMPOSITE	5/32	4.0	TTG	U	1967	COMPOSITE	5/32	4.0	TTG	U
1704	COMPOSITE	3/16	5.0	TTG	U	1230	COMPOSITE	3/16	5.0	TTG	U
1705	COMPOSITE	1/4	6.0	TTG	U	1231	COMPOSITE	1/4	6.0	TTG	U
<b>AFG Inds. Inc.-TN ; Greenland, TN</b>						1232	COMPOSITE	3/8	10.0	TTG	U
598	COMPOSITE	1/8	3.0	TTG	U	1406	COMPOSITE	1/2	12.0	TTG	U
955	COMPOSITE	5/32	4.0	TTG	U	1428	COMPOSITE	5/32	4.0	TPG (s)	U
220	COMPOSITE	3/16	5.0	TTG	U	2054	COMPOSITE	3/16	4.8	TPG (m)	U
89	COMPOSITE	1/4	6.0	TTG	U	<b>American Flat Glass Dist. ; Richmond, VA</b>					
90	COMPOSITE	3/8	10.0	TTG	U	2016	COMPOSITE	1/8	3.0	TTG	U
587	COMPOSITE	1/8	3.0	TPG (s)	U	2031	COMPOSITE	5/32	4.0	TTG	U
1139	COMPOSITE	3/16	4.8	TPG (s)	U	1956	COMPOSITE	3/16	5.0	TTG	U
<b>AFG Inds. Inc.-TN ; Kingsport, TN</b>						1957	COMPOSITE	1/4	6.0	TTG	U
1390	COMPOSITE	1/8	3.0	TTG	U	1958	COMPOSITE	3/8	10.0	TTG	U
949	COMPOSITE	5/32	4.0	TTG	U	1959	COMPOSITE	1/2	12.0	TTG	U
28	COMPOSITE	3/16	5.0	TTG	U	1960	COMPOSITE	5/32	4.0	TPG (s)	U
24	COMPOSITE	1/4	6.0	TTG	U	1961	COMPOSITE	3/16	4.8	TPG (s)	U
1414	COMPOSITE	1/8	3.0	TPG (m)	U	<b>American Glassmith/Sumiglass ; Columbus, OH</b>					
1143	COMPOSITE	3/16	4.8	TPG (s)	U	2174	COMPOSITE	1/4	6.0	LTG (b)	(.030) U
<b>AFG Inds. Inc.-WV ; Bridgeport, WV</b>						2175	COMPOSITE	1/2	12.0	LTG (b)	(.030) U
1436	COMPOSITE	1/8	3.0	TTG	U	<b>Anthony's Mfg. Inc. ; San Fernando, CA</b>					
1624	COMPOSITE	5/32	4.0	TTG	U	520	ANSI ONLY	1/8	3.0	TTG	U
1795	COMPOSITE	3/16	5.0	TTG	U	999	ANSI ONLY	3/16	5.0	TTG	U
1794	COMPOSITE	1/4	6.0	TTG	U	1000	ANSI ONLY	1/4	6.0	TTG	U
<b>AFGD, Div. Of AFG Inds. Ltd. ; London, ON</b>						<b>Arch Aluminum &amp; Glass ; Indianapolis, IN</b>					
1872	COMPOSITE	1/8	3.0	TTG	U	2078	ANSI ONLY	1/8	3.0	TTG	U
1873	COMPOSITE	5/32	4.0	TTG	U	2079	ANSI ONLY	5/32	4.0	TTG	U
1874	COMPOSITE	3/16	5.0	TTG	U	2080	ANSI ONLY	3/16	5.0	TTG	U
1875	COMPOSITE	1/4	6.0	TTG	U	2081	ANSI ONLY	1/4	6.0	TTG	U
<b>AFGD, FPD ; Concord, ON</b>						2082	ANSI ONLY	3/8	10.0	TTG	U
1485	COMPOSITE	1/8	3.0	TTG	U	2083	ANSI ONLY	1/2	12.0	TTG	U
1486	COMPOSITE	5/32	4.0	TTG	U	2084	ANSI ONLY	5/32	4.0	TPG (s)	U
1945	COMPOSITE	3/16	5.0	TTG	U	2085	ANSI ONLY	3/16	4.8	TPG (s)	U
1489	COMPOSITE	1/4	6.0	TTG	U						

*Certified Products-Alphabetical By Plant*

SGCC#	TEST STD	INCH	(MM)	TYPE	MAX SIZE CERTIFIED	SGCC#	TEST STD	INCH	(MM)	TYPE	MAX SIZE CERTIFIED
<b>Arch Aluminum &amp; Glass ; Kansas City, KS</b>						<b>Berkowitz, J.E. ; Westville, NJ</b>					
2086	ANSI ONLY	1/8	3.0	TTG	U	1989	COMPOSITE	1/8	3.0	TTG	U
2087	ANSI ONLY	3/16	5.0	TTG	U	1990	COMPOSITE	1/4	6.0	TTG	U
2088	ANSI ONLY	1/4	6.0	TTG	U	1991	COMPOSITE	1/2	12.0	TTG	U
2089	ANSI ONLY	3/8	10.0	TTG	U	<b>Cardinal CG ; Buford, GA</b>					
2090	ANSI ONLY	1/2	12.0	TTG	U	1921	COMPOSITE	1/8	3.0	TTG	U
2098	ANSI ONLY	5/32	4.0	TPG (s)	U	1922	COMPOSITE	5/32	4.0	TTG	U
2099	ANSI ONLY	3/16	4.8	TPG (s)	U	1923	COMPOSITE	3/16	5.0	TTG	U
<b>Arch Aluminum &amp; Glass ; Memphis, TN</b>						1924	COMPOSITE	1/4	6.0	TTG	U
2091	ANSI ONLY	1/8	3.0	TTG	U	2146	CPSC ONLY	1/8	3.0	TPG (s)	U
2092	ANSI ONLY	3/16	5.0	TTG	U	2147	CPSC ONLY	5/32	4.0	TPG (s)	U
2094	ANSI ONLY	1/4	6.0	TTG	U	2148	CPSC ONLY	3/16	4.8	TPG (s)	U
2095	ANSI ONLY	3/8	10.0	TTG	U	<b>Cardinal CG ; Northfield, MN</b>					
2096	ANSI ONLY	1/2	12.0	TTG	U	1985	CPSC ONLY	1/8	3.0	TTG	U
2093	ANSI ONLY	7/32	5.6	TPG (s)	U	1986	CPSC ONLY	5/32	4.0	TTG	U
<b>Arch Aluminum &amp; Glass ; Orlando, FL</b>						1987	CPSC ONLY	3/16	5.0	TTG	U
1526	ANSI ONLY	1/8	3.0	TTG	U	1988	CPSC ONLY	1/4	6.0	TTG	U
1527	COMPOSITE	3/16	5.0	TTG	U	2011	CPSC ONLY	1/8	3.0	TPG (s)	U
1528	ANSI ONLY	1/4	6.0	TTG	U	2012	CPSC ONLY	5/32	4.0	TPG (s)	U
1895	ANSI ONLY	3/8	10.0	TTG	U	2013	CPSC ONLY	3/16	4.8	TPG (s)	U
1530	ANSI ONLY	1/2	12.0	TTG	U	<b>Cardinal CG ; Spring Green, WI</b>					
1835	ANSI ONLY	3/4	19.0	TTG	U	2067	CPSC ONLY	1/8	3.0	TTG	U
1531	ANSI ONLY	1/8	3.0	TPG (s)	U	2068	CPSC ONLY	5/32	4.0	TTG	U
1682	ANSI ONLY	5/32	4.0	TPG (s)	U	2069	CPSC ONLY	3/16	5.0	TTG	U
1562	COMPOSITE	3/16	4.8	TPG (s)	U	2070	CPSC ONLY	1/4	6.0	TTG	U
<b>Arch Aluminum &amp; Glass ; Phoenix, AZ</b>						2071	CPSC ONLY	1/8	3.0	TPG (s)	U
2149	ANSI ONLY	1/8	3.0	TTG	U	<b>Cardinal CG ; Tumwater, WA</b>					
2150	ANSI ONLY	3/16	5.0	TTG	U	2007	CPSC ONLY	1/8	3.0	TTG	U
2151	ANSI ONLY	1/4	6.0	TTG	U	2008	CPSC ONLY	5/32	4.0	TTG	U
2152	ANSI ONLY	3/8	10.0	TTG	U	2009	CPSC ONLY	3/16	5.0	TTG	U
2153	ANSI ONLY	1/2	12.0	TTG	U	2010	CPSC ONLY	1/4	6.0	TTG	U
<b>Arch Aluminum &amp; Glass ; Tamarac, FL</b>						<b>Cardinal IG ; Fremont, IN</b>					
2161	ANSI ONLY	1/8	3.0	TTG	U	2176	CPSC ONLY	1/8	3.0	TTG	U
2162	ANSI ONLY	3/16	5.0	TTG	U	2177	CPSC ONLY	5/32	4.0	TTG	U
2163	ANSI ONLY	1/4	6.0	TTG	U	2178	CPSC ONLY	3/16	5.0	TTG	U
2164	ANSI ONLY	3/8	10.0	TTG	U	2179	CPSC ONLY	1/4	6.0	TTG	U
2165	ANSI ONLY	1/2	12.0	TTG	U	2203	CPSC ONLY	1/8	3.0	TPG (s)	U
2180	ANSI ONLY	1/8	3.0	TPG (s)	U	2204	CPSC ONLY	5/32	4.0	TPG (s)	U
2181	ANSI ONLY	3/16	4.8	TPG (s)	U	2205	CPSC ONLY	3/16	4.8	TPG (s)	U
<b>Arch Aluminum &amp; Glass ; Villa Rica, GA</b>						<b>Cardinal IG ; Greenfield, IA</b>					
1765	COMPOSITE	1/8	3.0	TTG	U	1827	CPSC ONLY	1/8	3.0	TTG	U
1766	ANSI ONLY	3/16	5.0	TTG	U	1828	CPSC ONLY	5/32	4.0	TTG	U
1767	ANSI ONLY	1/4	6.0	TTG	U	1829	CPSC ONLY	3/16	5.0	TTG	U
1768	ANSI ONLY	3/8	10.0	TTG	U	1830	CPSC ONLY	1/4	6.0	TTG	U
1769	ANSI ONLY	1/2	12.0	TTG	U	1841	CPSC ONLY	1/8	3.0	TPG (s)	U
2100	ANSI ONLY	5/32	4.0	TPG (s)	U	1842	CPSC ONLY	5/32	4.0	TPG (s)	U
2097	ANSI ONLY	7/32	5.6	TPG (s)	U	1843	CPSC ONLY	3/16	4.8	TPG (s)	U
<b>Arch Aluminum &amp; Glass ; Youngsville, NC</b>						<b>Cardinal IG ; Spring Green, WI</b>					
2110	COMPOSITE	1/8	3.0	TTG	U	1831	CPSC ONLY	1/8	3.0	TTG	U
2111	COMPOSITE	3/16	5.0	TTG	U	1832	CPSC ONLY	5/32	4.0	TTG	U
2112	COMPOSITE	1/4	6.0	TTG	U	1833	CPSC ONLY	3/16	5.0	TTG	U
2113	COMPOSITE	3/8	10.0	TTG	U	1834	CPSC ONLY	1/4	6.0	TTG	U
2114	COMPOSITE	1/2	12.0	TTG	U	1844	CPSC ONLY	1/8	3.0	TPG (s)	34"X60"
2115	COMPOSITE	5/32	4.0	TPG (s)	U	1845	CPSC ONLY	5/32	4.0	TPG (s)	U
2116	COMPOSITE	3/16	4.8	TPG (s)	U	1846	CPSC ONLY	3/16	4.8	TPG (s)	U
<b>Architectural Safety Glass ; Ft. Pierce</b>						<b>Cardinal LG ; Amery, WI</b>					
1914	COMPOSITE	1/4	6.0	LTG (b)	(.030) U	2166	COMPOSITE	5/32	4.0	LTG (b)(C1)	(.015) U
<b>Ardco Inc. ; Chicago, IL</b>						2169	COMPOSITE	1/4	6.0	LTG (l)	(.030) U
1041	COMPOSITE	1/8	3.0	TTG	U	2167	COMPOSITE	1/4	6.0	LTG (b)	(.030) U
1042	COMPOSITE	3/16	5.0	TTG	U	2240	COMPOSITE	5/16	8.9	LPG (b)(m)	(.030) U
1951	COMPOSITE	3/16	4.8	TBP (s)	U	<b>Cardinal TG ; Tomah, WI</b>					
2006	COMPOSITE	1/4	6.0	TBP (s)	U	1804	COMPOSITE	1/8	3.0	TTG	U
1563	COMPOSITE	5/32	4.0	TBG	U	1805	COMPOSITE	5/32	4.0	TTG	U
1564	COMPOSITE	3/16	5.0	TBG	U	1806	COMPOSITE	3/16	5.0	TTG	U
1565	COMPOSITE	1/4	6.0	TBG	U	1807	COMPOSITE	1/4	6.0	TTG	U



*Certified Products-Alphabetical By Plant*

SGCC#	TEST STD	INCH	(MM)	TYPE	MAX SIZE CERTIFIED	SGCC#	TEST STD	INCH	(MM)	TYPE	MAX SIZE CERTIFIED
<b>Coastal Glass Distributors ; Charleston, SC</b>						<b>Downey Glass Co. ; Los Angeles, CA</b>					
2101	COMPOSITE	1/8	3.0	TTG	U	1808	COMPOSITE	1/8	3.0	TTG	U
2102	COMPOSITE	5/32	4.0	TTG	U	1609	COMPOSITE	5/32	4.0	TTG	U
2103	COMPOSITE	3/16	5.0	TTG	U	630	COMPOSITE	3/16	5.0	TTG	U
2104	COMPOSITE	1/4	6.0	TTG	U	514	COMPOSITE	1/4	6.0	TTG	U
2105	COMPOSITE	3/8	10.0	TTG	U	515	COMPOSITE	3/8	10.0	TTG	U
2106	COMPOSITE	1/2	12.0	TTG	U	516	COMPOSITE	1/2	12.0	TTG	U
2109	COMPOSITE	3/16	4.8	TPG (m)	U	2074	COMPOSITE	3/4	19.0	TTG	U
<b>Colonial Mirror &amp; Glass Corp. ; Brooklyn, NY</b>						<b>Edge Seal Technologies ; Walton Hills, OH</b>					
2237	COMPOSITE	3/16	5.0	TTG	U	1611	COMPOSITE	1/8	3.0	TPG (m)	U
1847	COMPOSITE	1/4	6.0	TTG	U	2075	COMPOSITE	5/32	4.0	TPG (s)	U
1848	COMPOSITE	3/8	10.0	TTG	U	935	COMPOSITE	3/16	4.8	TPG (s)	U
1929	COMPOSITE	1/2	12.0	TTG	U	678	COMPOSITE	7/32	5.6	TPG (s)	U
2236	COMPOSITE	5/8	15.0	TTG	U	<b>Commercial Insulating Glass Co. ; Sarasota, FL</b>					
2238	COMPOSITE	3/4	19.0	TTG	U	1889	COMPOSITE	1/8	3.0	TTG	31"X76"
<b>Commercial Insulating Glass Co. ; Sarasota, FL</b>						<b>Edge Seal Technologies ; Walton Hills, OH</b>					
1890	COMPOSITE	3/16	5.0	TTG	31"X76"	2050	COMPOSITE	1/8	3.0	TTG	U
1891	COMPOSITE	1/4	6.0	TTG	31"X76"	2051	COMPOSITE	5/32	4.0	TTG	U
1892	COMPOSITE	1/8	3.0	TPG (s)	31"X76	2052	COMPOSITE	3/16	5.0	TTG	U
1894	COMPOSITE	3/16	4.8	TPG (s)	31"X76	2055	COMPOSITE	1/4	6.0	TTG	U
<b>Consolidated Glass Corp. ; New Castle, PA</b>						<b>Edge Seal Technologies ; Walton Hills, OH</b>					
1998	COMPOSITE	1/8	3.0	TTG	U	2050	COMPOSITE	1/8	3.0	TTG	U
1999	COMPOSITE	5/32	4.0	TTG	U	2051	COMPOSITE	5/32	4.0	TTG	U
2005	COMPOSITE	3/16	5.0	TTG	U	2052	COMPOSITE	3/16	5.0	TTG	U
2002	COMPOSITE	1/4	6.0	TTG	U	2055	COMPOSITE	1/4	6.0	TTG	U
2003	COMPOSITE	3/8	10.0	TTG	U	<b>Effco Corp. ; Monett, MO</b>					
2004	COMPOSITE	1/2	12.0	TTG	U	1901	COMPOSITE	3/16	5.0	TTG	U
2060	COMPOSITE	5/8	15.0	TTG	U	1902	COMPOSITE	1/4	6.0	TTG	U
<b>Contour Industries Inc. ; Surgoinville, TN</b>						<b>Flex-O-Glass Inc. ; Dixon, IL</b>					
1680	COMPOSITE	1/8	3.0	TTG	18"X76"	118	ANSI ONLY	.080	2.0	SPS	U
1678	COMPOSITE	3/16	5.0	TTG	18"X76"	<b>Floral Glass &amp; Mirror ; Hauppauge, NY</b>					
1677	COMPOSITE	1/4	6.0	TTG	18"X76"	1546	COMPOSITE	1/8	3.0	TTG	U
1676	COMPOSITE	1/8	3.0	TPG (s)	18"X60	1547	COMPOSITE	3/16	5.0	TTG	U
<b>Coraglass Inc. ; Reform, AL</b>						<b>Floral Glass &amp; Mirror ; Hauppauge, NY</b>					
1908	COMPOSITE	1/8	3.0	TTG	U	1548	COMPOSITE	1/4	6.0	TTG	U
1909	COMPOSITE	5/32	4.0	TTG	U	1549	COMPOSITE	3/8	10.0	TTG	U
1910	COMPOSITE	3/16	5.0	TTG	U	1550	COMPOSITE	1/2	12.0	TTG	U
1911	COMPOSITE	1/4	6.0	TTG	U	1551	COMPOSITE	3/4	19.0	TTG	U
2144	COMPOSITE	3/8	10.0	TTG	U	<b>Four Seasons Solar Products ; Holbrook, NY</b>					
2145	COMPOSITE	1/2	12.0	TTG	U	1791	COMPOSITE	1/8	3.0	TTG	U
1962	COMPOSITE	1/8	3.0	TPG (s)	U	<b>Free State Glass Inds. ; Warrenton, VA</b>					
1963	COMPOSITE	5/32	4.0	TPG (s)	U	1590	COMPOSITE	1/8	3.0	TTG	U
1964	COMPOSITE	3/16	4.8	TPG (s)	U	1591	COMPOSITE	3/16	5.0	TTG	U
<b>D &amp; S Tempered Glass ; Dallas, TX</b>						<b>Free State Glass Inds. ; Warrenton, VA</b>					
1653	COMPOSITE	1/8	3.0	TTG	U	1592	COMPOSITE	1/4	6.0	TTG	U
1654	COMPOSITE	5/32	4.0	TTG	U	1593	COMPOSITE	3/8	10.0	TTG	U
1655	COMPOSITE	3/16	5.0	TTG	U	1594	COMPOSITE	1/2	12.0	TTG	U
1656	COMPOSITE	1/4	6.0	TTG	U	<b>Gardner Mirror Corporation ; North Wilkesboro, NC</b>					
1657	COMPOSITE	3/8	10.0	TTG	U	1931	COMPOSITE	1/8	3.0	TTG	U
1658	COMPOSITE	1/2	12.0	TTG	U	1932	COMPOSITE	5/32	4.0	TTG	U
1965	COMPOSITE	3/4	19.0	TTG	U	1933	COMPOSITE	3/16	5.0	TTG	U
2065	COMPOSITE	1/8	3.0	TPG (d)	U	1934	COMPOSITE	1/4	6.0	TTG	U
1659	COMPOSITE	1/8	3.0	TPG (s)	U	1968	COMPOSITE	5/16	8.0	TTG	U
1660	COMPOSITE	5/32	4.0	TPG (s)	U	1935	COMPOSITE	3/8	10.0	TTG	U
1661	COMPOSITE	3/16	4.8	TPG (s)	U	1936	COMPOSITE	1/2	12.0	TTG	U
<b>D &amp; W, Incorporated ; Elkhart, IN</b>						<b>Gardner Mirror Corporation ; North Wilkesboro, NC</b>					
2027	COMPOSITE	1/8	3.0	TTG	28"X42"	1937	COMPOSITE	3/4	19.0	TTG	U
2028	COMPOSITE	5/32	4.0	TTG	28"X42"	<b>Gemtron-Sweetwater ; Sweetwater, TN</b>					
2029	COMPOSITE	3/16	5.0	TTG	28"X42"	1334	COMPOSITE	1/8	3.0	TTG	U
2030	COMPOSITE	1/4	6.0	TTG	28"X42"	1332	COMPOSITE	5/32	4.0	TTG	U
<b>Dong Sung Glass Co. ; Incheon, Korea</b>						<b>Gemtron-Sweetwater ; Sweetwater, TN</b>					
2230	ANSI ONLY	1/8	3.0	TTG	U	1201	COMPOSITE	3/16	5.0	TTG	U
						<b>GGI Glass Distributors Corp. ; Ronkonkoma, NY</b>					
						2225	COMPOSITE	1/8	3.0	TTG	U
						2226	COMPOSITE	3/16	5.0	TTG	U
						2227	COMPOSITE	1/4	6.0	TTG	U
						2228	COMPOSITE	1/2	12.0	TTG	U

Certified Products-Alphabetical By Plant

SGCC#	TEST STD	INCH	(MM)	TYPE	MAX SIZE CERTIFIED	SGCC#	TEST STD	INCH	(MM)	TYPE	MAX SIZE CERTIFIED
<b>Glass Distributors of America ; Lithia Springs, GA</b>						<b>Guardian Inds. Corp. ; Kingsburg, CA</b>					
2123	COMPOSITE	1/8	3.0	TTG	U	968	ANSI ONLY	1/8	3.0	TTG	U
2124	COMPOSITE	3/16	5.0	TTG	U	969	ANSI ONLY	5/32	4.0	TTG	U
2125	COMPOSITE	1/4	6.0	TTG	U	970	ANSI ONLY	3/16	5.0	TTG	U
2126	COMPOSITE	3/8	10.0	TTG	U	971	ANSI ONLY	1/4	6.0	TTG	U
2127	COMPOSITE	1/2	12.0	TTG	U	1303	ANSI ONLY	1/8	3.0	TPG (m)	U
2139	COMPOSITE	1/8	3.0	TPG (s)	U	1301	ANSI ONLY	5/32	4.0	TPG (m)	U
2128	COMPOSITE	5/32	4.0	TPG (s)	U	1304	ANSI ONLY	3/16	4.8	TPG (s)	U
2122	COMPOSITE	3/16	4.8	TPG (s)	U	1882	ANSI ONLY	1/4	6.0	TPG (s)	U
<b>Glass, Inc. ; Englewood, CO</b>						<b>Guardian Inds. Corp. ; Lewistown, PA</b>					
2185	COMPOSITE	1/8	3.0	TTG	U	1627	ANSI ONLY	1/8	3.0	TTG	U
2186	COMPOSITE	3/16	5.0	TTG	U	1866	ANSI ONLY	5/32	4.0	TTG	U
2187	COMPOSITE	1/4	6.0	TTG	U	1628	ANSI ONLY	3/16	5.0	TTG	U
2188	COMPOSITE	3/8	10.0	TTG	U	1629	ANSI ONLY	1/4	6.0	TTG	U
<b>Globe-Amerada Glass Co. (Assurance) ; Selma, AL</b>						<b>Guardian Inds. Corp. ; Reedley, CA</b>					
1668	COMPOSITE	1/4	6.0	LTG (b)	(.030) U	2117	CPSC ONLY	1/8	3.0	OCG	U
<b>Guardian Fabrication Inc. ; Millbury, OH</b>						<b>Guardian Inds. Corp. ; Richburg, SC</b>					
1574	ANSI ONLY	1/8	3.0	TTG	U	1630	ANSI ONLY	1/8	3.0	TTG	U
1575	ANSI ONLY	5/32	4.0	TTG	U	1631	ANSI ONLY	5/32	4.0	TTG	U
1576	ANSI ONLY	3/16	5.0	TTG	U	1632	ANSI ONLY	3/16	5.0	TTG	U
1577	ANSI ONLY	1/4	6.0	TTG	U	1633	ANSI ONLY	1/4	6.0	TTG	U
<b>Guardian Fabrication Inc. ; Rogers, AR</b>						<b>Guardian Inds. Corp. ; Tillsonburg, ON</b>					
1355	ANSI ONLY	1/8	3.0	TTG	U	1462	ANSI ONLY	1/8	3.0	TTG	U
1616	ANSI ONLY	5/32	4.0	TTG	U	<b>Guardian Walled Lake Fab. ; Walled Lake, MI</b>					
1356	ANSI ONLY	3/16	5.0	TTG	U	1885	ANSI ONLY	1/8	3.0	TTG	U
1357	ANSI ONLY	1/4	6.0	TTG	U	2140	ANSI ONLY	5/32	4.0	TTG	U
1358	ANSI ONLY	1/8	3.0	TPG (s)	U	2141	ANSI ONLY	3/16	5.0	TTG	U
1359	ANSI ONLY	5/32	4.0	TPG (s)	U	2142	ANSI ONLY	1/4	6.0	TTG	U
<b>Guardian Fabrication Inc. ; Webster, MA</b>						<b>Hoffer's Inc. ; Schofield, WI</b>					
300	ANSI ONLY	1/8	3.0	TTG	U	1595	COMPOSITE	1/8	3.0	TTG	U
1607	ANSI ONLY	5/32	4.0	TTG	U	1862	COMPOSITE	5/32	4.0	TTG	U
1216	ANSI ONLY	3/16	5.0	TTG	U	1596	COMPOSITE	3/16	5.0	TTG	U
662	ANSI ONLY	1/4	6.0	TTG	U	1597	COMPOSITE	1/4	6.0	TTG	U
471	ANSI ONLY	3/8	10.0	TTG	U	1796	COMPOSITE	3/8	10.0	TTG	U
1235	ANSI ONLY	1/2	12.0	TTG	U	1797	COMPOSITE	1/2	12.0	TTG	U
<b>Guardian Inds. Canada Corp. ; Rexdale, ON</b>						<b>Interpane Glass Company ; Clinton, NC</b>					
1966	ANSI ONLY	5/32	4.0	OCG	U	1073	COMPOSITE	3/16	5.0	TTG	U
<b>Guardian Inds. Corp. ; Carleton, MI</b>						<b>Interpane Glass Company ; Deerfield, WI</b>					
933	ANSI ONLY	1/8	3.0	TTG	U	2042	COMPOSITE	3/16	5.0	TTG	U
934	ANSI ONLY	5/32	4.0	TTG	U	2043	COMPOSITE	1/4	6.0	TTG	U
631	ANSI ONLY	3/16	5.0	TTG	U	2044	COMPOSITE	5/16	8.0	TTG	U
131	ANSI ONLY	1/4	6.0	TTG	U	2045	COMPOSITE	3/8	10.0	TTG	U
<b>Guardian Inds. Corp. ; Corsicana, TX</b>						<b>Jarrett, Inc. ; East Palestine, OH</b>					
1248	ANSI ONLY	1/8	3.0	TTG	U	2118	COMPOSITE	1/8	3.0	LTG (I)	(.030) U
1249	ANSI ONLY	5/32	4.0	TTG	U	2119	COMPOSITE	3/16	5.0	LTG (I)	(.030) U
1250	ANSI ONLY	3/16	5.0	TTG	U	2120	COMPOSITE	1/4	6.0	LTG (I)	(.030) U
1251	ANSI ONLY	1/4	6.0	TTG	U						
1826	ANSI ONLY	5/16	8.0	TTG	U						
1253	ANSI ONLY	3/8	10.0	TTG	U						
1803	ANSI ONLY	1/2	12.0	TTG	U						
1463	ANSI ONLY	1/8	3.0	TPG (s)	U						
1737	ANSI ONLY	5/32	4.0	TPG (s)	U						
1464	ANSI ONLY	7/32	5.6	TPG (s)	U						
<b>Guardian Inds. Corp. ; Dewitt, IA</b>											
2020	ANSI ONLY	1/8	3.0	TTG	U						
2021	ANSI ONLY	5/32	4.0	TTG	U						
2022	ANSI ONLY	3/16	5.0	TTG	U						
2023	ANSI ONLY	1/4	6.0	TTG	U						
<b>Guardian Inds. Corp. ; Ft. Lauderdale, FL</b>											
1161	ANSI ONLY	1/8	3.0	TTG	U						
633	ANSI ONLY	3/16	5.0	TTG	U						
40	ANSI ONLY	1/4	6.0	TTG	U						
1665	ANSI ONLY	1/8	3.0	TPG (s)	U						
1318	ANSI ONLY	3/16	4.8	TPG (s)	U						

*Certified Products-Alphabetical By Plant*

SGCC#	TEST STD	INCH	(MM)	TYPE	MAX SIZE CERTIFIED	SGCC#	TEST STD	INCH	(MM)	TYPE	MAX SIZE CERTIFIED
<b>Laminated Glass Corp. ; Telford, PA</b>						<b>PPG Inds. Inc. ; Wichita Falls, TX</b>					
2014	COMPOSITE	3/16	5.0	TTG	U	1110	COMPOSITE	1/8	3.0	TTG	U
1879	COMPOSITE	1/4	6.0	TTG	U	1111	COMPOSITE	5/32	4.0	TTG	U
1880	COMPOSITE	3/8	10.0	TTG	U	1112	COMPOSITE	3/16	5.0	TTG	U
1881	COMPOSITE	1/2	12.0	TTG	U	1113	ANSI ONLY	1/4	6.0	TTG	U
1652	COMPOSITE	1/4	6.0	LTG (b)	(.030) U	<b>Prelco Inc. ; Riviers-du-Loup, QC</b>					
<b>Marvin Windows ; Warroad, MN</b>						2034	COMPOSITE	1/8	3.0	TTG	U
1689	COMPOSITE	1/8	3.0	TTG	U	2035	COMPOSITE	5/32	4.0	TTG	U
1723	COMPOSITE	5/32	4.0	TTG	U	2036	COMPOSITE	3/16	5.0	TTG	U
1690	COMPOSITE	3/16	5.0	TTG	U	2015	COMPOSITE	1/4	6.0	TTG	U
1691	COMPOSITE	1/4	6.0	TTG	U	2046	COMPOSITE	5/16	8.0	TTG	U
1724	COMPOSITE	1/8	3.0	TPG (s)	U	2047	COMPOSITE	3/8	10.0	TTG	U
1701	COMPOSITE	3/16	4.8	TPG (s)	U	2048	COMPOSITE	1/2	12.0	TTG	U
<b>Mid Ohio Tempering ; Columbus, OH</b>						2049	COMPOSITE	5/8	15.0	TTG	U
2156	COMPOSITE	1/8	3.0	TTG	U	2154	COMPOSITE	3/4	19.0	TTG	U
2170	COMPOSITE	3/16	5.0	TTG	U	2037	COMPOSITE	1/4	6.0	LTG (b)	(.030) U
2157	COMPOSITE	1/4	6.0	TTG	U	2155	COMPOSITE	1/4	6.0	LTG (b)(C1)	(.015) U
2158	COMPOSITE	3/8	10.0	TTG	U	<b>S &amp; S Glass Specialties Inc. ; Wauseon, OH</b>					
2159	COMPOSITE	1/2	12.0	TTG	U	2183	ANSI ONLY	1/8	3.0	TTG	U
<b>Milgard Tempering Inc. ; Tacoma, WA</b>						2184	ANSI ONLY	1/4	6.0	TTG	U
1578	COMPOSITE	1/4	6.0	TTG	U	<b>SAFTI c/o O'Keeffe's ; San Francisco, CA</b>					
<b>Mirror Factory ; Plymouth, MN</b>						1953	COMPOSITE	1/4	6.0	TTG	U
1915	COMPOSITE	7/32	5.6	LTG (b)	(.030) U	1954	COMPOSITE	1/2	12.0	TTG	U
<b>Nashville Tempered Glass Corp. ; Nashville, TN</b>						<b>Shaw Glass Co. ; S. Easton, MA</b>					
1416	COMPOSITE	1/8	3.0	TTG	U	1792	COMPOSITE	5/32	4.0	TTG	U
1467	COMPOSITE	3/16	5.0	TTG	U	1871	COMPOSITE	3/16	5.0	TTG	U
1417	COMPOSITE	1/4	6.0	TTG	U	1035	COMPOSITE	1/4	6.0	TTG	U
2202	COMPOSITE	1/4	6.0	LTG (b)	(.030) U	1036	COMPOSITE	3/8	10.0	TTG	U
<b>North American Glass ; Bensenville, IL</b>						1037	COMPOSITE	1/2	12.0	TTG	U
2136	COMPOSITE	5/32	4.0	TTG	U	1939	COMPOSITE	3/16	4.8	TPG (s)	U
1381	COMPOSITE	3/16	5.0	TTG	U	<b>Sovis North America, Inc. ; Thierry, France</b>					
1382	COMPOSITE	1/4	6.0	TTG	U	2248	COMPOSITE	1/4	6.0	TTG	U
1383	COMPOSITE	3/8	10.0	TTG	U	1992	COMPOSITE	5/32	4.0	TBG	U
1384	COMPOSITE	1/2	12.0	TTG	U	1938	COMPOSITE	3/16	5.0	TBG	U
2137	COMPOSITE	3/4	19.0	TTG	U	1864	COMPOSITE	1/4	6.0	TBG	U
1809	COMPOSITE	1/4	6.0	TBG	U	<b>Specialty Building Products ; New Westminster, BC</b>					
1536	COMPOSITE	3/8	10.0	TBG	U	2121	COMPOSITE	1/8	3.0	TTG	22"X64"
2053	COMPOSITE	1/2	12.0	TBG	U	<b>Sterling Plumbing Group ; Union City, TN</b>					
<b>Patio Enclosures Inc. ; Macedonia, OH</b>						1979	COMPOSITE	1/8	3.0	TTG	U
2056	COMPOSITE	1/8	3.0	TTG	U	1980	COMPOSITE	5/32	4.0	TTG	U
2057	COMPOSITE	5/32	4.0	TTG	U	1981	COMPOSITE	3/16	5.0	TTG	U
2058	COMPOSITE	3/16	5.0	TTG	U	1982	COMPOSITE	1/4	6.0	TTG	U
2059	COMPOSITE	1/4	6.0	TTG	U	1983	COMPOSITE	1/8	3.0	TPG (s)	U
<b>Perilstein Distribution Corp. ; Cheswick, PA</b>						1984	COMPOSITE	3/16	4.8	TPG (s)	U
1784	COMPOSITE	1/8	3.0	TTG	U	<b>Summit Window &amp; Patio Door ; Yakima, WA</b>					
1785	COMPOSITE	3/16	5.0	TTG	U	2066	COMPOSITE	3/32	2.0	TTG	U
1786	COMPOSITE	1/4	6.0	TTG	U	1799	COMPOSITE	1/8	3.0	TTG	U
1787	COMPOSITE	3/8	10.0	TTG	U	1800	COMPOSITE	3/16	5.0	TTG	U
1788	COMPOSITE	1/2	12.0	TTG	U	1801	COMPOSITE	1/4	6.0	TTG	U
1789	COMPOSITE	1/8	3.0	TPG (s)	U	1802	COMPOSITE	1/8	3.0	TPG (s)	U
1790	COMPOSITE	3/16	4.8	TPG (s)	U	2171	COMPOSITE	3/16	4.8	TPG (s)	U
<b>Poma Glass &amp; Specialty Windows, Inc. ; Girard, OH</b>						2172	COMPOSITE	1/4	6.0	TPG (s)	U
2207	COMPOSITE	1/8	3.0	OCG	U	<b>Sunbelt Glass inc. ; Tulsa, OK</b>					
<b>PPG Inds. Inc. ; Burlington, IA</b>						1453	COMPOSITE	1/8	3.0	TTG	U
1605	COMPOSITE	1/8	3.0	TTG	U	1870	COMPOSITE	5/32	4.0	TTG	U
1606	COMPOSITE	5/32	4.0	TTG	U	1454	COMPOSITE	3/16	5.0	TTG	U
1603	COMPOSITE	3/16	5.0	TTG	U	1455	COMPOSITE	1/4	6.0	TTG	U
1604	COMPOSITE	1/4	6.0	TTG	U	1456	COMPOSITE	3/8	10.0	TTG	U
<b>PPG Inds. Inc. ; Carlisle, PA</b>						1457	COMPOSITE	1/2	12.0	TTG	U
250	COMPOSITE	1/8	3.0	TTG	U	1617	COMPOSITE	5/32	4.0	TPG (s)	U
675	COMPOSITE	5/32	4.0	TTG	U	1618	COMPOSITE	3/16	4.8	TPG (s)	U
249	COMPOSITE	3/16	5.0	TTG	U	<b>Swift Glass Co., Inc. ; Elmira Heights, NY</b>					
382	ANSI ONLY	1/4	6.0	TTG	U	1555	COMPOSITE	1/8	3.0	TTG	U
<b>PPG Inds. Inc. ; Fresno, CA</b>						1556	COMPOSITE	3/16	5.0	TTG	U
295	COMPOSITE	1/8	3.0	TTG	U	1557	COMPOSITE	1/4	6.0	TTG	U
676	COMPOSITE	5/32	4.0	TTG	U	1558	COMPOSITE	3/8	10.0	TTG	U
64	COMPOSITE	3/16	5.0	TTG	U	1559	COMPOSITE	1/2	12.0	TTG	U

**Certified Products-Alphabetical By Plant**

SGCC#	TEST STD	INCH	(MM)	TYPE	MAX SIZE CERTIFIED	SGCC#	TEST STD	INCH	(MM)	TYPE	MAX SIZE CERTIFIED
<b>Taylor Made Glass Ohio Inc. ; Payne, OH</b>						<b>Vitrierie April Inc. ; Montreal, QC</b>					
1586	COMPOSITE	1/8	3.0	TTG	U	1996	COMPOSITE	1/8	3.0	TTG	U
1587	COMPOSITE	5/32	4.0	TTG	U	1997	COMPOSITE	3/16	5.0	TTG	U
1588	COMPOSITE	3/16	5.0	TTG	U	2062	COMPOSITE	1/2	12.0	TTG	U
1589	COMPOSITE	1/4	6.0	TTG	U	2063	COMPOSITE	5/8	15.0	TTG	U
<b>Tecnoglass ; Barranquilla, Columbia</b>						<b>Westshore Glass ; Tampa, FL</b>					
2133	COMPOSITE	1/8	3.0	TTG	U	1970	COMPOSITE	1/8	3.0	TTG	U
1993	COMPOSITE	3/16	5.0	TTG	U	1971	COMPOSITE	5/32	4.0	TTG	U
1994	COMPOSITE	1/4	6.0	TTG	U	1972	COMPOSITE	3/16	5.0	TTG	U
2134	COMPOSITE	5/16	8.0	TTG	U	1973	COMPOSITE	1/4	6.0	TTG	U
1995	COMPOSITE	3/8	10.0	TTG	U	1978	COMPOSITE	3/8	10.0	TTG	U
2135	COMPOSITE	1/2	12.0	TTG	U	1974	COMPOSITE	1/2	12.0	TTG	U
<b>Tempered Glass Inc. ; Austell, GA</b>						<b>CERTIFIED PRODUCTS KEY</b>					
862	COMPOSITE	3/16	5.0	TTG	U	TTG =	TEMPERED TRANSPARENT GLASS				
863	COMPOSITE	1/4	6.0	TTG	U	TPG =	TEMPERED PATTERNED GLASS				
865	COMPOSITE	3/8	10.0	TTG	U	TBG =	TEMPERED BENT GLASS				
866	COMPOSITE	1/2	12.0	TTG	U	TBP =	TEMPERED BENT PATTERNED GLASS				
<b>Tempglass Group Inc. ; Miami, FL</b>						LTG =	LAMINATED TRANSPARENT GLASS				
1744	COMPOSITE	3/16	5.0	TTG	U	LPG =	LAMINATED PATTERNED GLASS				
1745	COMPOSITE	1/4	6.0	TTG	U	LSP =	LAMINATED SPECIALTY PRODUCTS				
1746	COMPOSITE	3/8	10.0	TTG	U	OCG =	ORGANIC COATED GLASS				
1747	COMPOSITE	1/2	12.0	TTG	U	OCH =	ORGANIC COATED GLASS HYBRID				
<b>Tempglass Group Inc. ; Perrysburg, OH</b>						SPS =	SAFETY PLASTIC SHEET				
1039	COMPOSITE	1/8	3.0	TTG	U	U =	UNLIMITED SIZE CATEGORY				
592	COMPOSITE	3/16	5.0	TTG	U	(s) =	SHALLOW PATTERN				
1420	COMPOSITE	1/4	6.0	TTG	U	(m) =	MEDIUM PATTERN				
594	COMPOSITE	3/8	10.0	TTG	U	(d) =	DEEP PATTERN				
595	COMPOSITE	1/2	12.0	TTG	U	(b) =	POLY VINYL BUTRAL INTERLAYER				
<b>Traco (Three Rivers Alum) ; Red Oak, IA</b>						(l) =	LIQUID RESIN INTERLAYER				
1308	COMPOSITE	1/8	3.0	TTG	U	(p) =	POLYETHYLENE TERPHTHALATE				
1310	COMPOSITE	3/16	5.0	TTG	U	(f) =	FLUORINATED ETHYLENE PROPYLENE INTERLAYER				
1311	COMPOSITE	1/4	6.0	TTG	U	(c1) =	CPSC CAT I ONLY				
<b>US Precision Glass ; Elgin, IL</b>											
1369	COMPOSITE	1/8	3.0	TTG	U						
1370	COMPOSITE	5/32	4.0	TTG	U						
1371	COMPOSITE	3/16	5.0	TTG	U						
1372	COMPOSITE	1/4	6.0	TTG	U						
1854	COMPOSITE	3/8	10.0	TTG	U						
<b>US Precision Glass ; Lewisburg, OH</b>											
1050	COMPOSITE	1/8	3.0	TTG	U						
1452	COMPOSITE	5/32	4.0	TTG	U						
185	COMPOSITE	3/16	5.0	TTG	U						
186	COMPOSITE	1/4	6.0	TTG	U						
654	ANSI ONLY	1/8	3.0	TPG (m)	U						
328	ANSI ONLY	3/16	4.8	TPG (d)	U						
188	ANSI ONLY	3/16	4.8	TPG (s)	U						
<b>Viracon Inc. ; Owatonna, MN</b>											
1403	COMPOSITE	3/16	5.0	TTG	U						
1404	COMPOSITE	1/4	6.0	TTG	U						
1508	COMPOSITE	3/8	10.0	TTG	U						
1509	COMPOSITE	1/2	12.0	TTG	U						
1863	COMPOSITE	1/8	3.0	OCH (h)	(.037) U						
1949	COMPOSITE	3/16	5.0	OCH (h)	(.030) U						
1884	COMPOSITE	1/4	6.0	OCH (h)	(.037) U						
1637	COMPOSITE	3/16	4.8	LTG (b)	(.030) U						
1950	COMPOSITE	5/16	7.5	LSP	U						
<b>Virginia Glass Products Corp. ; Martinsville, VA</b>											
12	COMPOSITE	3/16	5.0	TTG	U						
14	COMPOSITE	1/4	6.0	TTG	U						
93	COMPOSITE	3/8	10.0	TTG	U						
94	COMPOSITE	1/2	12.0	TTG	U						
2182	COMPOSITE	5/8	15.0	TTG	U						
95	COMPOSITE	3/4	19.0	TTG	U						

*Certified Products - by Product Type*

		<u>SGCC #</u>		<u>Lab ID</u>	<u>Max Size Certified</u>
<b><u>Tempered Transparent Glass</u></b>					
<b><i>3/32 Inch Tempered Transparent Glass</i></b>					
Summit Window & Patio Door	Yakima, WA	2066	COMPOSITE	750	U
<b><i>1/8 Inch Tempered Transparent Glass</i></b>					
ACI Distribution	Dallas, TX	1919	COMPOSITE	550	U
AFG Inds. Inc.-CA	Victorville, CA	1664	COMPOSITE	250	U
AFG Inds. Inc.-KS	Spring Hill, KS	1702	COMPOSITE	500	U
AFG Inds. Inc.-TN	Kingsport, TN	1390	COMPOSITE	300	U
AFG Inds. Inc.-TN	Greenland, TN	598	COMPOSITE	300	U
AFG Inds. Inc.-WV	Bridgeport, WV	1436	COMPOSITE	400	U
AFGD, Div. Of AFG Inds. Ltd.	London, ON	1872	COMPOSITE	400	U
AFGD, FPD	Concord, ON	1485	COMPOSITE	400	U
American Flat Glass Dist.	Marietta, GA	1405	COMPOSITE	300	U
American Flat Glass Dist.	Hebron, OH	2196	COMPOSITE	200	U
American Flat Glass Dist.	Fall River, MA	1518	COMPOSITE	400	U
American Flat Glass Dist.	Richmond, VA	2016	COMPOSITE	100	U
American Flat Glass Dist.	Alvarado, TX	1708	COMPOSITE	550	U
Anthony's Mfg. Inc.	San Fernando, CA	520	ANSI ONLY	250	U
Arch Aluminum & Glass	Memphis, TN	2091	ANSI ONLY	300	U
Arch Aluminum & Glass	Tamarac, FL	2161	ANSI ONLY	285	U
Arch Aluminum & Glass	Orlando, FL	1526	ANSI ONLY	300	U
Arch Aluminum & Glass	Kansas City, KS	2086	ANSI ONLY	300	U
Arch Aluminum & Glass	Villa Rica, GA	1765	COMPOSITE	300	U
Arch Aluminum & Glass	Phoenix, AZ	2149	ANSI ONLY	950	U
Arch Aluminum & Glass	Indianapolis, IN	2078	ANSI ONLY	300	U
Arch Aluminum & Glass	Youngsville, NC	2110	COMPOSITE	300	U
Ardco Inc.	Chicago, IL	1041	COMPOSITE	400	U
Berkowitz, J.E.	Westville, NJ	1989	COMPOSITE	100	U
Cardinal CG	Northfield, MN	1985	CPSC ONLY	150	U
Cardinal CG	Tumwater, WA	2007	CPSC ONLY	750	U
Cardinal CG	Buford, GA	1921	COMPOSITE	300	U
Cardinal CG	Spring Green, WI	2067	CPSC ONLY	500	U
Cardinal IG	Fremont, IN	2176	CPSC ONLY	200	U
Cardinal IG	Greenfield, IA	1827	CPSC ONLY	500	U
Cardinal IG	Spring Green, WI	1831	CPSC ONLY	500	U
Cardinal TG	Tomah, WI	1804	COMPOSITE	500	U
Coastal Glass Distributors	Charleston, SC	2101	COMPOSITE	300	U
Commercial Insulating Glass Co.	Sarasota, FL	1889	COMPOSITE	300	31"X76"
Consolidated Glass Corp.	New Castle, PA	1998	COMPOSITE	400	U
Contour Industries Inc.	Surgoinsville, TN	1680	COMPOSITE	300	18"X76"
Coraglass Inc.	Reform, AL	1908	COMPOSITE	300	U
D & S Tempered Glass	Dallas, TX	1653	COMPOSITE	550	U
D & W, Incorporated	Elkhart, IN	2027	COMPOSITE	200	28"X42"
Dong Sung Glass Co.	Inchon, Korea	2230	ANSI ONLY	950	U
Downey Glass Co.	Los Angeles, CA	1608	COMPOSITE	250	U
Edge Seal Technologies	Walton Hills, OH	2050	COMPOSITE	200	U
Floral Glass & Mirror	Hauppauge, NY	1546	COMPOSITE	400	U
Four Seasons Solar Products	Holbrook, NY	1791	COMPOSITE	400	U
Free State Glass Inds.	Warrenton, VA	1590	COMPOSITE	100	U
Gardner Mirror Corporation	North Wilkesboro, NC	1931	COMPOSITE	300	U
Gemtron-Sweetwater	Sweetwater, TN	1334	COMPOSITE	300	U
GGI Glass Distributors Corp.	Ronkonkoma, NY	2225	COMPOSITE	400	U
Glass Distributors of America	Lithia Springs, GA	2123	COMPOSITE	300	U
Glass, Inc.	Englewood, CO	2185	COMPOSITE	250	U
Guardian Fabrication Inc.	Rogers, AR	1355	ANSI ONLY	550	U
Guardian Fabrication Inc.	Millbury, OH	1574	ANSI ONLY	200	U
Guardian Fabrication Inc.	Webster, MA	300	ANSI ONLY	400	U
Guardian Inds. Corp.	Richburg, SC	1630	ANSI ONLY	300	U
Guardian Inds. Corp.	Lewistown, PA	1627	ANSI ONLY	400	U
Guardian Inds. Corp.	Kingsburg, CA	968	ANSI ONLY	550	U

*Certified Products - by Product Type*

		<u>SGCC #</u>		<u>Lab ID</u>	<u>Max Size Certified</u>
<i>1/8 Inch Tempered Transparent Glass</i>					
Guardian Inds. Corp.	Tillsonburg, ON	1462	ANSI ONLY	400	U
Guardian Inds. Corp.	Corsicana, TX	1248	ANSI ONLY	550	U
Guardian Inds. Corp.	Ft. Lauderdale, FL	1161	ANSI ONLY	300	U
Guardian Inds. Corp.	Carleton, MI	933	ANSI ONLY	200	U
Guardian Inds. Corp.	Dewitt, IA	2020	ANSI ONLY	500	U
Guardian Walled Lake Fab.	Walled Lake, MI	1885	ANSI ONLY	200	U
Hoffer's Inc.	Schofield, WI	1595	COMPOSITE	150	U
Marvin Windows	Warroad, MN	1689	COMPOSITE	400	U
Mid Ohio Tempering	Columbus, OH	2156	COMPOSITE	200	U
Nashville Tempered Glass Corp.	Nashville, TN	1416	COMPOSITE	200	U
Patio Enclosures Inc.	Macedonia, OH	2056	COMPOSITE	200	U
Perilstein Distribution Corp.	Cheswick, PA	1784	COMPOSITE	400	U
PPG Inds. Inc.	Fresno, CA	295	COMPOSITE	250	U
PPG Inds. Inc.	Carlisle, PA	250	COMPOSITE	400	U
PPG Inds. Inc.	Burlington, IA	1605	COMPOSITE	500	U
PPG Inds. Inc.	Wichita Falls, TX	1110	COMPOSITE	550	U
Prelco Inc.	Riviers-du-Loup, QC	2034	COMPOSITE	400	U
S & S Glass Specialties Inc.	Wauseon, OH	2183	ANSI ONLY	400	U
Specialty Building Products	New Westminster, BC	2121	COMPOSITE	400	22"X64"
Sterling Plumbing Group	Union City, TN	1979	COMPOSITE	550	U
Summit Window & Patio Door	Yakima, WA	1799	COMPOSITE	750	U
Sunbelt Glass Inc.	Tulsa, OK	1453	COMPOSITE	550	U
Swift Glass Co., Inc.	Elmira Heights, NY	1555	COMPOSITE	400	U
Taylor Made Glass Ohio Inc.	Payne, OH	1586	COMPOSITE	400	U
Tecnoglass	Barranquilla, Columbia	2133	COMPOSITE	300	U
Tempglass Group Inc.	Perrysburg, OH	1039	COMPOSITE	200	U
Traco (Three Rivers Alum)	Red Oak, IA	1308	COMPOSITE	100	U
US Precision Glass	Elgin, IL	1369	COMPOSITE	200	U
US Precision Glass	Lewisburg, OH	1050	COMPOSITE	200	U
Vitrierie April Inc.	Montreal, QC	1996	COMPOSITE	400	U
Westshore Glass	Tampa, FL	1970	COMPOSITE	300	U
<i>5/32 Inch Tempered Transparent Glass</i>					
AFG Inds. Inc.-CA	Victorville, CA	1641	COMPOSITE	250	U
AFG Inds. Inc.-KS	Spring Hill, KS	1703	COMPOSITE	500	U
AFG Inds. Inc.-TN	Greenland, TN	955	COMPOSITE	300	U
AFG Inds. Inc.-TN	Kingsport, TN	949	COMPOSITE	300	U
AFG Inds. Inc.-WV	Bridgeport, WV	1624	COMPOSITE	400	U
AFGD, Div. Of AFG Inds. Ltd.	London, ON	1873	COMPOSITE	400	U
AFGD, FPD	Concord, ON	1486	COMPOSITE	400	U
All Team Glass & Mirror Ltd.	Woodbridge, ON	1754	COMPOSITE	400	U
American Flat Glass Dist.	Marietta, GA	1967	COMPOSITE	300	U
American Flat Glass Dist.	Richmond, VA	2031	COMPOSITE	100	U
Arch Aluminum & Glass	Indianapolis, IN	2079	ANSI ONLY	300	U
Cardinal CG	Tumwater, WA	2008	CPSC ONLY	750	U
Cardinal CG	Northfield, MN	1986	CPSC ONLY	150	U
Cardinal CG	Buford, GA	1922	COMPOSITE	300	U
Cardinal CG	Spring Green, WI	2068	CPSC ONLY	500	U
Cardinal IG	Fremont, IN	2177	CPSC ONLY	200	U
Cardinal IG	Spring Green, WI	1832	CPSC ONLY	500	U
Cardinal IG	Greenfield, IA	1828	CPSC ONLY	500	U
Cardinal TG	Tomah, WI	1805	COMPOSITE	500	U
Coastal Glass Distributors	Charleston, SC	2102	COMPOSITE	300	U
Consolidated Glass Corp.	New Castle, PA	1999	COMPOSITE	400	U
Coraglass Inc.	Reform, AL	1909	COMPOSITE	300	U
D & S Tempered Glass	Dallas, TX	1654	COMPOSITE	550	U
D & W, Incorporated	Elkhart, IN	2028	COMPOSITE	200	28"X42"
Downey Glass Co.	Los Angeles, CA	1609	COMPOSITE	250	U
Edge Seal Technologies	Walton Hills, OH	2051	COMPOSITE	200	U
Gardner Mirror Corporation	North Wilkesboro, NC	1932	COMPOSITE	300	U

*Certified Products - by Product Type*

		<u>SGCC #</u>		<u>Lab ID</u>	<u>Max Size Certified</u>
<i>5/32 Inch Tempered Transparent Glass</i>					
Gemtron-Sweetwater	Sweetwater, TN	1332	COMPOSITE	300	U
Guardian Fabrication Inc.	Rogers, AR	1616	ANSI ONLY	550	U
Guardian Fabrication Inc.	Webster, MA	1607	ANSI ONLY	400	U
Guardian Fabrication Inc.	Millbury, OH	1575	ANSI ONLY	200	U
Guardian Inds. Corp.	Carleton, MI	934	ANSI ONLY	200	U
Guardian Inds. Corp.	Lewistown, PA	1866	ANSI ONLY	400	U
Guardian Inds. Corp.	Dewitt, IA	2021	ANSI ONLY	500	U
Guardian Inds. Corp.	Corsicana, TX	1249	ANSI ONLY	550	U
Guardian Inds. Corp.	Richburg, SC	1631	ANSI ONLY	300	U
Guardian Inds. Corp.	Kingsburg, CA	969	ANSI ONLY	550	U
Guardian Walled Lake Fab.	Walled Lake, MI	2140	ANSI ONLY	200	U
Hoffer's Inc.	Schofield, WI	1862	COMPOSITE	150	U
Marvin Windows	Warroad, MN	1723	COMPOSITE	400	U
North American Glass	Bensenville, IL	2136	COMPOSITE	200	U
Patio Enclosures Inc.	Macedonia, OH	2057	COMPOSITE	200	U
PPG Inds. Inc.	Burlington, IA	1606	COMPOSITE	500	U
PPG Inds. Inc.	Wichita Falls, TX	1111	COMPOSITE	550	U
PPG Inds. Inc.	Fresno, CA	676	COMPOSITE	250	U
PPG Inds. Inc.	Carlisle, PA	675	COMPOSITE	400	U
Prelco Inc.	Riviers-du-Loup, QC	2035	COMPOSITE	400	U
Shaw Glass Co.	S. Easton, MA	1792	COMPOSITE	400	U
Sterling Plumbing Group	Union City, TN	1980	COMPOSITE	550	U
Sunbelt Glass Inc.	Tulsa, OK	1870	COMPOSITE	550	U
Taylor Made Glass Ohio Inc.	Payne, OH	1587	COMPOSITE	400	U
US Precision Glass	Lewisburg, OH	1452	COMPOSITE	200	U
US Precision Glass	Elgin, IL	1370	COMPOSITE	200	U
Westshore Glass	Tampa, FL	1971	COMPOSITE	300	U
<i>3/16 Inch Tempered Transparent Glass</i>					
ACI Distribution	Santa Fe Springs, CA	1157	COMPOSITE	250	U
ACI Distribution	Greensboro, NC	1642	COMPOSITE	300	U
ACI Distribution	Dallas, TX	400	COMPOSITE	550	U
AFG Inds. Inc.-CA	Victorville, CA	1663	COMPOSITE	250	U
AFG Inds. Inc.-KS	Spring Hill, KS	1704	COMPOSITE	500	U
AFG Inds. Inc.-TN	Greenland, TN	220	COMPOSITE	300	U
AFG Inds. Inc.-TN	Kingsport, TN	28	COMPOSITE	300	U
AFG Inds. Inc.-WV	Bridgeport, WV	1795	COMPOSITE	400	U
AFGD, Div. Of AFG Inds. Ltd.	London, ON	1874	COMPOSITE	400	U
AFGD, FPD	Concord, ON	1945	COMPOSITE	400	U
All Team Glass & Mirror Ltd.	Woodbridge, ON	1755	COMPOSITE	400	U
American Flat Glass Dist.	Alvarado, TX	1709	COMPOSITE	550	U
American Flat Glass Dist.	Richmond, VA	1956	COMPOSITE	100	U
American Flat Glass Dist.	Marietta, GA	1230	COMPOSITE	300	U
American Flat Glass Dist.	Fall River, MA	1519	COMPOSITE	400	U
American Flat Glass Dist.	Hebron, OH	2197	COMPOSITE	200	U
Anthony's Mfg. Inc.	San Fernando, CA	999	ANSI ONLY	250	U
Arch Aluminum & Glass	Tamarac, FL	2162	ANSI ONLY	285	U
Arch Aluminum & Glass	Orlando, FL	1527	COMPOSITE	300	U
Arch Aluminum & Glass	Villa Rica, GA	1766	ANSI ONLY	300	U
Arch Aluminum & Glass	Kansas City, KS	2087	ANSI ONLY	300	U
Arch Aluminum & Glass	Indianapolis, IN	2080	ANSI ONLY	300	U
Arch Aluminum & Glass	Memphis, TN	2092	ANSI ONLY	300	U
Arch Aluminum & Glass	Phoenix, AZ	2150	ANSI ONLY	950	U
Arch Aluminum & Glass	Youngsville, NC	2111	COMPOSITE	300	U
Ardco Inc.	Chicago, IL	1042	COMPOSITE	400	U
Cardinal CG	Spring Green, WI	2069	CPSC ONLY	500	U
Cardinal CG	Northfield, MN	1987	CPSC ONLY	150	U
Cardinal CG	Tumwater, WA	2009	CPSC ONLY	750	U
Cardinal CG	Buford, GA	1923	COMPOSITE	300	U
Cardinal IG	Greenfield, IA	1829	CPSC ONLY	500	U
Cardinal IG	Spring Green, WI	1833	CPSC ONLY	500	U

*Certified Products - by Product Type*

		<u>SGCC #</u>		<u>Lab ID</u>	<u>Max Size Certified</u>
<i>3/16 Inch Tempered Transparent Glass</i>					
Cardinal IG	Fremont, IN	2178	CPSC ONLY	200	U
Cardinal TG	Tomah, WI	1806	COMPOSITE	500	U
Coastal Glass Distributors	Charleston, SC	2103	COMPOSITE	300	U
Colonial Mirror & Glass Corp.	Brooklyn, NY	2237	COMPOSITE	400	U
Commercial Insulating Glass Co.	Sarasota, FL	1890	COMPOSITE	300	31"X76"
Consolidated Glass Corp.	New Castle, PA	2005	COMPOSITE	400	U
Contour Industries Inc.	Surgoinsville, TN	1678	COMPOSITE	300	18"X76"
Coraglass Inc.	Reform, AL	1910	COMPOSITE	300	U
D & S Tempered Glass	Dallas, TX	1655	COMPOSITE	550	U
D & W, Incorporated	Elkhart, IN	2029	COMPOSITE	200	28"X42"
Downey Glass Co.	Los Angeles, CA	630	COMPOSITE	250	U
Edge Seal Technologies	Walton Hills, OH	2052	COMPOSITE	200	U
Efco Corp.	Monett, MO	1901	COMPOSITE	150	U
Floral Glass & Mirror	Hauppauge, NY	1547	COMPOSITE	400	U
Free State Glass Inds.	Warrenton, VA	1591	COMPOSITE	100	U
Gardner Mirror Corporation	North Wilkesboro, NC	1933	COMPOSITE	300	U
Gemtron-Sweetwater	Sweetwater, TN	1201	COMPOSITE	300	U
GGI Glass Distributors Corp.	Ronkonkoma, NY	2226	COMPOSITE	400	U
Glass Distributors of America	Lithia Springs, GA	2124	COMPOSITE	300	U
Glass, Inc.	Englewood, CO	2186	COMPOSITE	250	U
Guardian Fabrication Inc.	Webster, MA	1216	ANSI ONLY	400	U
Guardian Fabrication Inc.	Millbury, OH	1576	ANSI ONLY	200	U
Guardian Fabrication Inc.	Rogers, AR	1356	ANSI ONLY	550	U
Guardian Inds. Corp.	Kingsburg, CA	970	ANSI ONLY	550	U
Guardian Inds. Corp.	Lewistown, PA	1628	ANSI ONLY	400	U
Guardian Inds. Corp.	Dewitt, IA	2022	ANSI ONLY	500	U
Guardian Inds. Corp.	Corsicana, TX	1250	ANSI ONLY	550	U
Guardian Inds. Corp.	Richburg, SC	1632	ANSI ONLY	300	U
Guardian Inds. Corp.	Ft. Lauderdale, FL	633	ANSI ONLY	300	U
Guardian Inds. Corp.	Carleton, MI	631	ANSI ONLY	200	U
Guardian Walled Lake Fab.	Walled Lake, MI	2141	ANSI ONLY	200	U
Hoffer's Inc.	Schofield, WI	1596	COMPOSITE	150	U
Interpane Glass Company	Clinton, NC	1073	COMPOSITE	300	U
Interpane Glass Company	Deerfield, WI	2042	COMPOSITE	975	U
Laminated Glass Corp.	Telford, PA	2014	COMPOSITE	275	U
Marvin Windows	Warroad, MN	1690	COMPOSITE	400	U
Mid Ohio Tempering	Columbus, OH	2170	COMPOSITE	200	U
Nashville Tempered Glass Corp.	Nashville, TN	1467	COMPOSITE	200	U
North American Glass	Bensenville, IL	1381	COMPOSITE	200	U
Patio Enclosures Inc.	Macedonia, OH	2058	COMPOSITE	200	U
Perilstein Distribution Corp.	Cheswick, PA	1785	COMPOSITE	400	U
PPG Inds. Inc.	Fresno, CA	64	COMPOSITE	250	U
PPG Inds. Inc.	Burlington, IA	1603	COMPOSITE	500	U
PPG Inds. Inc.	Carlisle, PA	249	COMPOSITE	400	U
PPG Inds. Inc.	Wichita Falls, TX	1112	COMPOSITE	550	U
Prelco Inc.	Riviers-du-Loup, QC	2036	COMPOSITE	400	U
Shaw Glass Co.	S. Easton, MA	1871	COMPOSITE	400	U
Sterling Plumbing Group	Union City, TN	1981	COMPOSITE	550	U
Summit Window & Patio Door	Yakima, WA	1800	COMPOSITE	750	U
Sunbelt Glass Inc.	Tulsa, OK	1454	COMPOSITE	550	U
Swift Glass Co., Inc.	Elmira Heights, NY	1556	COMPOSITE	400	U
Taylor Made Glass Ohio Inc.	Payne, OH	1588	COMPOSITE	400	U
Tecnoglass	Barranquilla, Columbia	1993	COMPOSITE	300	U
Tempered Glass Inc.	Austell, GA	862	COMPOSITE	300	U
Tempglass Group Inc.	Miami, FL	1744	COMPOSITE	285	U
Tempglass Group Inc.	Perrysburg, OH	592	COMPOSITE	200	U
Traco (Three Rivers Alum)	Red Oak, IA	1310	COMPOSITE	100	U
US Precision Glass	Elgin, IL	1371	COMPOSITE	200	U
US Precision Glass	Lewisburg, OH	185	COMPOSITE	200	U
Viracon Inc.	Owatonna, MN	1403	COMPOSITE	150	U



*Certified Products - by Product Type*

		<u>SGCC #</u>		<u>Lab ID</u>	<u>Max Size Certified</u>
<i>3/16 Inch Tempered Transparent Glass</i>					
Virginia Glass Products Corp.	Martinsville, VA	12	COMPOSITE	300	U
Vitrierie April Inc.	Montreal, QC	1997	COMPOSITE	400	U
Westshore Glass	Tampa, FL	1972	COMPOSITE	300	U
<i>1/4 Inch Tempered Transparent Glass</i>					
ACI Distribution	Dallas, TX	402	COMPOSITE	550	U
ACI Distribution	Santa Fe Springs, CA	1535	COMPOSITE	250	U
ACI Distribution	Greensboro, NC	1643	COMPOSITE	300	U
ACI Distribution	Santa Clara, CA	1496	COMPOSITE	250	U
AFG Inds. Inc.-CA	Victorville, CA	1925	COMPOSITE	250	U
AFG Inds. Inc.-KS	Spring Hill, KS	1705	COMPOSITE	500	U
AFG Inds. Inc.-TN	Greenland, TN	89	COMPOSITE	300	U
AFG Inds. Inc.-TN	Kingsport, TN	24	COMPOSITE	300	U
AFG Inds. Inc.-WV	Bridgeport, WV	1794	COMPOSITE	400	U
AFGD, Div. Of AFG Inds. Ltd.	London, ON	1875	COMPOSITE	400	U
AFGD, FPD	Concord, ON	1489	COMPOSITE	400	U
All Team Glass & Mirror Ltd.	Woodbridge, ON	1756	COMPOSITE	400	U
American Flat Glass Dist.	Richmond, VA	1957	COMPOSITE	100	U
American Flat Glass Dist.	Alvarado, TX	1710	COMPOSITE	550	U
American Flat Glass Dist.	Hebron, OH	2198	COMPOSITE	200	U
American Flat Glass Dist.	Fall River, MA	1520	COMPOSITE	400	U
American Flat Glass Dist.	Marietta, GA	1231	COMPOSITE	300	U
Anthony's Mfg. Inc.	San Fernando, CA	1000	ANSI ONLY	250	U
Arch Aluminum & Glass	Villa Rica, GA	1767	ANSI ONLY	300	U
Arch Aluminum & Glass	Youngsville, NC	2112	COMPOSITE	300	U
Arch Aluminum & Glass	Tamarac, FL	2163	ANSI ONLY	285	U
Arch Aluminum & Glass	Indianapolis, IN	2081	ANSI ONLY	300	U
Arch Aluminum & Glass	Memphis, TN	2094	ANSI ONLY	300	U
Arch Aluminum & Glass	Orlando, FL	1528	ANSI ONLY	300	U
Arch Aluminum & Glass	Phoenix, AZ	2151	ANSI ONLY	950	U
Arch Aluminum & Glass	Kansas City, KS	2088	ANSI ONLY	300	U
Berkowitz, J.E.	Westville, NJ	1990	COMPOSITE	100	U
Cardinal CG	Northfield, MN	1988	CPSC ONLY	150	U
Cardinal CG	Tumwater, WA	2010	CPSC ONLY	750	U
Cardinal CG	Buford, GA	1924	COMPOSITE	300	U
Cardinal CG	Spring Green, WI	2070	CPSC ONLY	500	U
Cardinal IG	Spring Green, WI	1834	CPSC ONLY	500	U
Cardinal IG	Fremont, IN	2179	CPSC ONLY	200	U
Cardinal IG	Greenfield, IA	1830	CPSC ONLY	500	U
Cardinal TG	Tomah, WI	1807	COMPOSITE	500	U
Coastal Glass Distributors	Charleston, SC	2104	COMPOSITE	300	U
Colonial Mirror & Glass Corp.	Brooklyn, NY	1847	COMPOSITE	400	U
Commercial Insulating Glass Co.	Sarasota, FL	1891	COMPOSITE	300	31"X76"
Consolidated Glass Corp.	New Castle, PA	2002	COMPOSITE	400	U
Contour Industries Inc.	Surgoinsville, TN	1677	COMPOSITE	300	18"X76"
Coraglass Inc.	Reform, AL	1911	COMPOSITE	300	U
D & S Tempered Glass	Dallas, TX	1656	COMPOSITE	550	U
D & W, Incorporated	Elkhart, IN	2030	COMPOSITE	200	28"X42"
Downey Glass Co.	Los Angeles, CA	514	COMPOSITE	250	U
Edge Seal Technologies	Walton Hills, OH	2055	COMPOSITE	200	U
Efco Corp.	Monett, MO	1902	COMPOSITE	150	U
Floral Glass & Mirror	Hauppauge, NY	1548	COMPOSITE	400	U
Free State Glass Inrds.	Warrenton, VA	1592	COMPOSITE	100	U
Gardner Mirror Corporation	North Wilkesboro, NC	1934	COMPOSITE	300	U
Gemtron-Sweetwater	Sweetwater, TN	1477	COMPOSITE	300	U
GGI Glass Distributors Corp.	Ronkonkoma, NY	2227	COMPOSITE	400	U
Glass Distributors of America	Lithia Springs, GA	2125	COMPOSITE	300	U
Glass, Inc.	Englewood, CO	2187	COMPOSITE	250	U
Guardian Fabrication Inc.	Webster, MA	662	ANSI ONLY	400	U
Guardian Fabrication Inc.	Millbury, OH	1577	ANSI ONLY	200	U
Guardian Fabrication Inc.	Rogers, AR	1357	ANSI ONLY	550	U

*Certified Products - by Product Type*

		<u>SGCC #</u>		<u>Lab ID</u>	<u>Max Size Certified</u>
<i>1/4 Inch Tempered Transparent Glass</i>					
Guardian Inds. Corp.	Carleton, MI	131	ANSI ONLY	200	U
Guardian Inds. Corp.	Richburg, SC	1633	ANSI ONLY	300	U
Guardian Inds. Corp.	Ft. Lauderdale, FL	40	ANSI ONLY	300	U
Guardian Inds. Corp.	Kingsburg, CA	971	ANSI ONLY	550	U
Guardian Inds. Corp.	Corsicana, TX	1251	ANSI ONLY	550	U
Guardian Inds. Corp.	Lewistown, PA	1629	ANSI ONLY	400	U
Guardian Inds. Corp.	Dewitt, IA	2023	ANSI ONLY	500	U
Guardian Walled Lake Fab.	Walled Lake, MI	2142	ANSI ONLY	200	U
Hoffer's Inc.	Schofield, WI	1597	COMPOSITE	150	U
Interpane Glass Company	Clinton, NC	1074	COMPOSITE	300	U
Interpane Glass Company	Deerfield, WI	2043	COMPOSITE	975	U
Laminated Glass Corp.	Telford, PA	1879	COMPOSITE	275	U
Marvin Windows	Warroad, MN	1691	COMPOSITE	400	U
Mid Ohio Tempering	Columbus, OH	2157	COMPOSITE	200	U
Milgard Tempering Inc.	Tacoma, WA	1578	COMPOSITE	750	U
Nashville Tempered Glass Corp.	Nashville, TN	1417	COMPOSITE	200	U
North American Glass	Bensenville, IL	1382	COMPOSITE	200	U
Patio Enclosures Inc.	Macedonia, OH	2059	COMPOSITE	200	U
Perlstein Distribution Corp.	Cheswick, PA	1786	COMPOSITE	400	U
PPG Inds. Inc.	Carlisle, PA	382	ANSI ONLY	400	U
PPG Inds. Inc.	Wichita Falls, TX	1113	ANSI ONLY	550	U
PPG Inds. Inc.	Burlington, IA	1604	COMPOSITE	500	U
Prelco Inc.	Riviers-du-Loup, QC	2015	COMPOSITE	400	U
S & S Glass Specialties Inc.	Wauseon, OH	2184	ANSI ONLY	400	U
SAFTI c/o O'Keeffe's	San Francisco, CA	1953	COMPOSITE	950	U
Shaw Glass Co.	S. Easton, MA	1035	COMPOSITE	400	U
Sovis North America, Inc.	Thierry, France	2248	COMPOSITE	300	U
Sterling Plumbing Group	Union City, TN	1982	COMPOSITE	550	U
Summit Window & Patio Door	Yakima, WA	1801	COMPOSITE	750	U
Sunbelt Glass Inc.	Tulsa, OK	1455	COMPOSITE	550	U
Swift Glass Co., Inc.	Elmira Heights, NY	1557	COMPOSITE	400	U
Taylor Made Glass Ohio Inc.	Payne, OH	1589	COMPOSITE	400	U
Tecnoglass	Barranquilla, Columbia	1994	COMPOSITE	300	U
Tempered Glass Inc.	Austell, GA	863	COMPOSITE	300	U
Tempglass Group Inc.	Miami, FL	1745	COMPOSITE	285	U
Tempglass Group Inc.	Perrysburg, OH	1420	COMPOSITE	200	U
Traco (Three Rivers Alum)	Red Oak, IA	1311	COMPOSITE	100	U
US Precision Glass	Elgin, IL	1372	COMPOSITE	200	U
US Precision Glass	Lewisburg, OH	186	COMPOSITE	200	U
Viracon Inc.	Owatonna, MN	1404	COMPOSITE	150	U
Virginia Glass Products Corp.	Martinsville, VA	14	COMPOSITE	300	U
Westshore Glass	Tampa, FL	1973	COMPOSITE	300	U
<i>5/16 Inch Tempered Transparent Glass</i>					
Gardner Mirror Corporation	North Wilkesboro, NC	1968	COMPOSITE	300	U
Guardian Inds. Corp.	Corsicana, TX	1826	ANSI ONLY	550	U
Interpane Glass Company	Deerfield, WI	2044	COMPOSITE	975	U
Interpane Glass Company	Clinton, NC	1075	COMPOSITE	300	U
Prelco Inc.	Riviers-du-Loup, QC	2046	COMPOSITE	400	U
Tecnoglass	Barranquilla, Columbia	2134	COMPOSITE	300	U
<i>3/8 Inch Tempered Transparent Glass</i>					
ACI Distribution	Santa Clara, CA	1497	COMPOSITE	250	U
ACI Distribution	Greensboro, NC	1644	COMPOSITE	300	U
ACI Distribution	Dallas, TX	1107	COMPOSITE	550	U
ACI Distribution	Santa Fe Springs, CA	1179	COMPOSITE	250	U
AFG Inds. Inc.-TN	Greenland, TN	90	COMPOSITE	300	U
All Team Glass & Mirror Ltd.	Woodbridge, ON	1757	COMPOSITE	400	U
American Flat Glass Dist.	Marietta, GA	1232	COMPOSITE	300	U
American Flat Glass Dist.	Alvarado, TX	1711	COMPOSITE	550	U
American Flat Glass Dist.	Fall River, MA	1521	COMPOSITE	400	U

*Certified Products - by Product Type*Max Size  
CertifiedSGCC #Lab ID*3/8 Inch Tempered Transparent Glass*

American Flat Glass Dist.	Richmond, VA	1958	COMPOSITE	100	U
American Flat Glass Dist.	Hebron, OH	2199	COMPOSITE	200	U
Arch Aluminum & Glass	Kansas City, KS	2089	ANSI ONLY	300	U
Arch Aluminum & Glass	Tamarac, FL	2164	ANSI ONLY	285	U
Arch Aluminum & Glass	Youngsville, NC	2113	COMPOSITE	300	U
Arch Aluminum & Glass	Orlando, FL	1895	ANSI ONLY	300	U
Arch Aluminum & Glass	Indianapolis, IN	2082	ANSI ONLY	300	U
Arch Aluminum & Glass	Phoenix, AZ	2152	ANSI ONLY	950	U
Arch Aluminum & Glass	Villa Rica, GA	1768	ANSI ONLY	300	U
Arch Aluminum & Glass	Memphis, TN	2095	ANSI ONLY	300	U
Coastal Glass Distributors	Charleston, SC	2105	COMPOSITE	300	U
Colonial Mirror & Glass Corp.	Brooklyn, NY	1848	COMPOSITE	400	U
Consolidated Glass Corp.	New Castle, PA	2003	COMPOSITE	400	U
Coraglass Inc.	Reform, AL	2144	COMPOSITE	300	U
D & S Tempered Glass	Dallas, TX	1657	COMPOSITE	550	U
Downey Glass Co.	Los Angeles, CA	515	COMPOSITE	250	U
Floral Glass & Mirror	Hauppauge, NY	1549	COMPOSITE	400	U
Free State Glass Inds.	Warrenton, VA	1593	COMPOSITE	100	U
Gardner Mirror Corporation	North Wilkesboro, NC	1935	COMPOSITE	300	U
Glass Distributors of America	Lithia Springs, GA	2126	COMPOSITE	300	U
Glass, Inc.	Englewood, CO	2188	COMPOSITE	250	U
Guardian Fabrication Inc.	Webster, MA	471	ANSI ONLY	400	U
Guardian Inds. Corp.	Corsicana, TX	1253	ANSI ONLY	550	U
Guardian Inds. Corp.	Richburg, SC	1634	ANSI ONLY	300	U
Guardian Inds. Corp.	Lewistown, PA	1867	ANSI ONLY	400	U
Hoffer's Inc.	Schofield, WI	1796	COMPOSITE	150	U
Interpane Glass Company	Clinton, NC	1076	COMPOSITE	300	U
Interpane Glass Company	Deerfield, WI	2045	COMPOSITE	975	U
Laminated Glass Corp.	Telford, PA	1880	COMPOSITE	275	U
Mid Ohio Tempering	Columbus, OH	2158	COMPOSITE	200	U
North American Glass	Bensenville, IL	1383	COMPOSITE	200	U
Perlstein Distribution Corp.	Cheswick, PA	1787	COMPOSITE	400	U
Prelco Inc.	Riviers-du-Loup, QC	2047	COMPOSITE	400	U
Shaw Glass Co.	S. Easton, MA	1036	COMPOSITE	400	U
Sunbelt Glass Inc.	Tulsa, OK	1456	COMPOSITE	550	U
Swift Glass Co., Inc.	Elmira Heights, NY	1558	COMPOSITE	400	U
Tecnoglass	Barranquilla, Columbia	1995	COMPOSITE	300	U
Tempered Glass Inc.	Austell, GA	865	COMPOSITE	300	U
Tempglass Group Inc.	Perrysburg, OH	594	COMPOSITE	200	U
Tempglass Group Inc.	Miami, FL	1746	COMPOSITE	285	U
US Precision Glass	Elgin, IL	1854	COMPOSITE	200	U
Viracon Inc.	Owatonna, MN	1508	COMPOSITE	150	U
Virginia Glass Products Corp.	Martinsville, VA	93	COMPOSITE	300	U
Westshore Glass	Tampa, FL	1978	COMPOSITE	300	U

*1/2 Inch Tempered Transparent Glass*

ACI Distribution	Greensboro, NC	1645	COMPOSITE	300	U
ACI Distribution	Santa Fe Springs, CA	640	COMPOSITE	250	U
ACI Distribution	Dallas, TX	1108	COMPOSITE	550	U
ACI Distribution	Santa Clara, CA	1498	COMPOSITE	250	U
All Team Glass & Mirror Ltd.	Woodbridge, ON	1758	COMPOSITE	400	U
American Flat Glass Dist.	Marietta, GA	1406	COMPOSITE	300	U
American Flat Glass Dist.	Fall River, MA	1522	COMPOSITE	400	U
American Flat Glass Dist.	Hebron, OH	2200	COMPOSITE	200	U
American Flat Glass Dist.	Alvarado, TX	1712	COMPOSITE	550	U
American Flat Glass Dist.	Richmond, VA	1959	COMPOSITE	100	U
Arch Aluminum & Glass	Youngsville, NC	2114	COMPOSITE	300	U
Arch Aluminum & Glass	Orlando, FL	1530	ANSI ONLY	300	U
Arch Aluminum & Glass	Tamarac, FL	2165	ANSI ONLY	285	U
Arch Aluminum & Glass	Kansas City, KS	2090	ANSI ONLY	300	U
Arch Aluminum & Glass	Memphis, TN	2096	ANSI ONLY	300	U
Arch Aluminum & Glass	Villa Rica, GA	1769	ANSI ONLY	300	U

*Certified Products - by Product Type*

		<u>SGCC #</u>		<u>Lab ID</u>	<u>Max Size Certified</u>
<b>1/2 Inch Tempered Transparent Glass</b>					
Arch Aluminum & Glass	Phoenix, AZ	2153	ANSI ONLY	950	U
Arch Aluminum & Glass	Indianapolis, IN	2083	ANSI ONLY	300	U
Berkowitz, J.E.	Westville, NJ	1991	COMPOSITE	100	U
Coastal Glass Distibutors	Charleston, SC	2106	COMPOSITE	300	U
Colonial Mirror & Glass Corp.	Brooklyn, NY	1929	COMPOSITE	400	U
Consolidated Glass Corp.	New Castle, PA	2004	COMPOSITE	400	U
Coraglass Inc.	Reform, AL	2145	COMPOSITE	300	U
D & S Tempered Glass	Dallas, TX	1658	COMPOSITE	550	U
Downey Glass Co.	Los Angeles, CA	516	COMPOSITE	250	U
Floral Glass & Mirror	Hauppauge, NY	1550	COMPOSITE	400	U
Free State Glass Inds.	Warrenton, VA	1594	COMPOSITE	100	U
Gardner Mirror Corporation	North Wilkesboro, NC	1936	COMPOSITE	300	U
GGI Glass Distributors Corp.	Ronkonkoma, NY	2228	COMPOSITE	400	U
Glass Distributors of America	Lithia Springs, GA	2127	COMPOSITE	300	U
Guardian Fabrication Inc.	Webster, MA	1235	ANSI ONLY	400	U
Guardian Inds. Corp.	Lewistown, PA	1868	ANSI ONLY	400	U
Guardian Inds. Corp.	Corsicana, TX	1803	ANSI ONLY	550	U
Hoffer's Inc.	Schofield, WI	1797	COMPOSITE	150	U
Interpane Glass Company	Clinton, NC	1077	COMPOSITE	300	U
Laminated Glass Corp.	Telford, PA	1881	COMPOSITE	275	U
Mid Ohio Tempering	Columbus, OH	2159	COMPOSITE	200	U
North American Glass	Bensenville, IL	1384	COMPOSITE	200	U
Perilstein Distribution Corp.	Cheswick, PA	1788	COMPOSITE	400	U
Prelco Inc.	Riviers-du-Loup, QC	2048	COMPOSITE	400	U
SAFTI c/o O'Keeffe's	San Francisco, CA	1954	COMPOSITE	950	U
Shaw Glass Co.	S. Easton, MA	1037	COMPOSITE	400	U
Sunbelt Glass Inc.	Tulsa, OK	1457	COMPOSITE	550	U
Swift Glass Co., Inc.	Elmira Heights, NY	1559	COMPOSITE	400	U
Tecnoglass	Barranquilla, Columbia	2135	COMPOSITE	300	U
Tempered Glass Inc.	Austell, GA	866	COMPOSITE	300	U
Tempglass Group Inc.	Perrysburg, OH	595	COMPOSITE	200	U
Tempglass Group Inc.	Miami, FL	1747	COMPOSITE	285	U
Viracon Inc.	Owatonna, MN	1509	COMPOSITE	150	U
Virginia Glass Products Corp.	Martinsville, VA	94	COMPOSITE	300	U
Vitrierie April Inc.	Montreal, QC	2062	COMPOSITE	400	U
Westshore Glass	Tampa, FL	1974	COMPOSITE	300	U
<b>5/8 Inch Tempered Transparent Glass</b>					
Colonial Mirror & Glass Corp.	Brooklyn, NY	2236	COMPOSITE	400	U
Consolidated Glass Corp.	New Castle, PA	2060	COMPOSITE	400	U
Prelco Inc.	Riviers-du-Loup, QC	2049	COMPOSITE	400	U
Virginia Glass Products Corp.	Martinsville, VA	2182	COMPOSITE	300	U
Vitrierie April Inc.	Montreal, QC	2063	COMPOSITE	400	U
<b>3/4 Inch Tempered Transparent Glass</b>					
ACI Distribution	Dallas, TX	1225	COMPOSITE	550	U
Arch Aluminum & Glass	Orlando, FL	1835	ANSI ONLY	300	U
Colonial Mirror & Glass Corp.	Brooklyn, NY	2238	COMPOSITE	400	U
D & S Tempered Glass	Dallas, TX	1965	COMPOSITE	550	U
Downey Glass Co.	Los Angeles, CA	2074	COMPOSITE	250	U
Floral Glass & Mirror	Hauppauge, NY	1551	COMPOSITE	400	U
Gardner Mirror Corporation	North Wilkesboro, NC	1937	COMPOSITE	300	U
North American Glass	Bensenville, IL	2137	COMPOSITE	200	U
Prelco Inc.	Riviers-du-Loup, QC	2154	COMPOSITE	400	U
Virginia Glass Products Corp.	Martinsville, VA	95	COMPOSITE	300	U
<b>Tempered Patterned Glass</b>					
<b>1/8 Inch Tempered Patterned Glass</b>					
ACI Distribution	Santa Fe Springs, CA	1861	COMPOSITE	250	U
AFG Inds. Inc.-TN	Kingsport, TN	1414	COMPOSITE	300	U
AFG Inds. Inc.-TN	Greenland, TN	587	COMPOSITE	300	U
Arch Aluminum & Glass	Orlando, FL	1531	ANSI ONLY	300	U
Arch Aluminum & Glass	Tamarac, FL	2180	ANSI ONLY	285	U

*Certified Products - by Product Type*

		<u>SGCC #</u>		<u>Lab ID</u>	<u>Max Size Certified</u>
<i>1/8 Inch Tempered Patterned Glass</i>					
Cardinal CG	Northfield, MN	2011	CPSC ONLY	150	U
Cardinal CG	Buford, GA	2146	CPSC ONLY	300	U
Cardinal CG	Spring Green, WI	2071	CPSC ONLY	500	U
Cardinal IG	Greenfield, IA	1841	CPSC ONLY	500	U
Cardinal IG	Fremont, IN	2203	CPSC ONLY	200	U
Cardinal IG	Spring Green, WI	1844	CPSC ONLY	500	34"X60"
Commercial Insulating Glass Co.	Sarasota, FL	1892	COMPOSITE	300	31"X76
Contour Industries Inc.	Surgoinsville, TN	1676	COMPOSITE	300	18"X60
Coraglass Inc.	Reform, AL	1962	COMPOSITE	300	U
D & S Tempered Glass	Dallas, TX	1659	COMPOSITE	550	U
D & S Tempered Glass	Dallas, TX	2065	COMPOSITE	550	U
Downey Glass Co.	Los Angeles, CA	1611	COMPOSITE	250	U
Gemtron-Sweetwater	Sweetwater, TN	1422	COMPOSITE	300	U
Glass Distributors of America	Lithia Springs, GA	2139	COMPOSITE	300	U
Guardian Fabrication Inc.	Rogers, AR	1358	ANSI ONLY	550	U
Guardian Inds. Corp.	Kingsburg, CA	1303	ANSI ONLY	550	U
Guardian Inds. Corp.	Corsicana, TX	1463	ANSI ONLY	550	U
Guardian Inds. Corp.	Ft. Lauderdale, FL	1665	ANSI ONLY	300	U
Guardian Inds. Corp.	Richburg, SC	1683	ANSI ONLY	300	U
Marvin Windows	Warroad, MN	1724	COMPOSITE	400	U
Perlstein Distribution Corp.	Cheswick, PA	1789	COMPOSITE	400	U
Sterling Plumbing Group	Union City, TN	1983	COMPOSITE	550	U
Summit Window & Patio Door	Yakima, WA	1802	COMPOSITE	750	U
US Precision Glass	Lewisburg, OH	654	ANSI ONLY	200	U
<i>5/32 Inch Tempered Patterned Glass</i>					
American Flat Glass Dist.	Fall River, MA	2160	COMPOSITE	400	U
American Flat Glass Dist.	Alvarado, TX	1713	COMPOSITE	550	U
American Flat Glass Dist.	Marietta, GA	1428	COMPOSITE	300	U
American Flat Glass Dist.	Richmond, VA	1960	COMPOSITE	100	U
Arch Aluminum & Glass	Youngsville, NC	2115	COMPOSITE	300	U
Arch Aluminum & Glass	Villa Rica, GA	2100	ANSI ONLY	300	U
Arch Aluminum & Glass	Orlando, FL	1682	ANSI ONLY	300	U
Arch Aluminum & Glass	Kansas City, KS	2098	ANSI ONLY	300	U
Arch Aluminum & Glass	Indianapolis, IN	2084	ANSI ONLY	300	U
Cardinal CG	Buford, GA	2147	CPSC ONLY	300	U
Cardinal CG	Northfield, MN	2012	CPSC ONLY	150	U
Cardinal IG	Greenfield, IA	1842	CPSC ONLY	500	U
Cardinal IG	Fremont, IN	2204	CPSC ONLY	200	U
Cardinal IG	Spring Green, WI	1845	CPSC ONLY	500	U
Coraglass Inc.	Reform, AL	1963	COMPOSITE	300	U
D & S Tempered Glass	Dallas, TX	1660	COMPOSITE	550	U
Downey Glass Co.	Los Angeles, CA	2075	COMPOSITE	250	U
Gemtron-Sweetwater	Sweetwater, TN	1424	COMPOSITE	300	U
Glass Distributors of America	Lithia Springs, GA	2128	COMPOSITE	300	U
Guardian Fabrication Inc.	Rogers, AR	1359	ANSI ONLY	550	U
Guardian Inds. Corp.	Kingsburg, CA	1301	ANSI ONLY	550	U
Guardian Inds. Corp.	Richburg, SC	1635	ANSI ONLY	300	U
Guardian Inds. Corp.	Corsicana, TX	1737	ANSI ONLY	550	U
Sunbelt Glass Inc.	Tulsa, OK	1617	COMPOSITE	550	U
<i>3/16 Inch Tempered Patterned Glass</i>					
ACI Distribution	Greensboro, NC	2077	COMPOSITE	300	U
ACI Distribution	Dallas, TX	1728	COMPOSITE	550	U
AFG Inds. Inc.-TN	Kingsport, TN	1143	COMPOSITE	300	U
AFG Inds. Inc.-TN	Greenland, TN	1139	COMPOSITE	300	U
American Flat Glass Dist.	Richmond, VA	1961	COMPOSITE	100	U
American Flat Glass Dist.	Alvarado, TX	1714	COMPOSITE	550	U
American Flat Glass Dist.	Fall River, MA	1523	COMPOSITE	400	U
American Flat Glass Dist.	Hebron, OH	2201	COMPOSITE	200	U

*Certified Products - by Product Type*

		<u>SGCC #</u>		<u>Lab ID</u>	<u>Max Size Certified</u>
<b>3/16 Inch Tempered Patterned Glass</b>					
American Flat Glass Dist.	Marietta, GA	2054	COMPOSITE	300	U
Arch Aluminum & Glass	Kansas City, KS	2099	ANSI ONLY	300	U
Arch Aluminum & Glass	Indianapolis, IN	2085	ANSI ONLY	300	U
Arch Aluminum & Glass	Tamarac, FL	2181	ANSI ONLY	285	U
Arch Aluminum & Glass	Orlando, FL	1562	COMPOSITE	300	U
Arch Aluminum & Glass	Youngsville, NC	2116	COMPOSITE	300	U
Cardinal CG	Northfield, MN	2013	CPSC ONLY	150	U
Cardinal CG	Buford, GA	2148	CPSC ONLY	300	U
Cardinal IG	Greenfield, IA	1843	CPSC ONLY	500	U
Cardinal IG	Fremont, IN	2205	CPSC ONLY	200	U
Cardinal IG	Spring Green, WI	1846	CPSC ONLY	500	U
Coastal Glass Distibutors	Charleston, SC	2109	COMPOSITE	300	U
Commercial Insulating Glass Co.	Sarasota, FL	1894	COMPOSITE	300	31"X76
Coraglass Inc.	Reform, AL	1964	COMPOSITE	300	U
D & S Tempered Glass	Dallas, TX	1661	COMPOSITE	550	U
Downey Glass Co.	Los Angeles, CA	935	COMPOSITE	250	U
Efco Corp.	Monett, MO	2143	COMPOSITE	150	U
Glass Distributors of America	Lithia Springs, GA	2122	COMPOSITE	300	U
Guardian Inds. Corp.	Ft. Lauderdale, FL	1318	ANSI ONLY	300	U
Guardian Inds. Corp.	Richburg, SC	1865	ANSI ONLY	300	U
Guardian Inds. Corp.	Kingsburg, CA	1304	ANSI ONLY	550	U
Hoffer's Inc.	Schofield, WI	1798	COMPOSITE	150	U
Marvin Windows	Warroad, MN	1701	COMPOSITE	400	U
Perilstein Distribution Corp.	Cheswick, PA	1790	COMPOSITE	400	U
Shaw Glass Co.	S. Easton, MA	1939	COMPOSITE	400	U
Sterling Plumbing Group	Union City, TN	1984	COMPOSITE	550	U
Summit Window & Patio Door	Yakima, WA	2171	COMPOSITE	750	U
Sunbelt Glass Inc.	Tulsa, OK	1618	COMPOSITE	550	U
US Precision Glass	Lewisburg, OH	188	ANSI ONLY	200	U
US Precision Glass	Lewisburg, OH	328	ANSI ONLY	200	U
<b>7/32 Inch Tempered Patterned Glass</b>					
Arch Aluminum & Glass	Memphis, TN	2093	ANSI ONLY	300	U
Arch Aluminum & Glass	Villa Rica, GA	2097	ANSI ONLY	300	U
Downey Glass Co.	Los Angeles, CA	678	COMPOSITE	250	U
Guardian Inds. Corp.	Corsicana, TX	1464	ANSI ONLY	550	U
<b>1/4 Inch Tempered Patterned Glass</b>					
Guardian Inds. Corp.	Kingsburg, CA	1882	ANSI ONLY	550	U
Summit Window & Patio Door	Yakima, WA	2172	COMPOSITE	750	U
<b>Tempered Bent Patterned Glass</b>					
<b>3/16 Inch Tempered Bent Patterned Glass</b>					
Ardco Inc.	Chicago, IL	1951	COMPOSITE	400	U
<b>1/4 Inch Tempered Bent Patterned Glass</b>					
Ardco Inc.	Chicago, IL	2006	COMPOSITE	400	U
<b>Tempered Bent Glass</b>					
<b>5/32 Inch Tempered Bent Glass</b>					
Ardco Inc.	Chicago, IL	1563	COMPOSITE	400	U
Sovis North America, Inc.	Thierry, France	1992	COMPOSITE	300	U
<b>3/16 Inch Tempered Bent Glass</b>					
Ardco Inc.	Chicago, IL	1564	COMPOSITE	400	U
Sovis North America, Inc.	Thierry, France	1938	COMPOSITE	300	U
<b>1/4 Inch Tempered Bent Glass</b>					
Ardco Inc.	Chicago, IL	1565	COMPOSITE	400	U
North American Glass	Bensenville, IL	1809	COMPOSITE	200	U
Sovis North America, Inc.	Thierry, France	1864	COMPOSITE	300	U

*Certified Products - by Product Type*

			<u>SGCC #</u>		<u>Lab ID</u>	<u>Max Size Certified</u>
<b>3/8 Inch Tempered Bent Glass</b>						
North American Glass	Bensenville, IL		1536	COMPOSITE	200	U
<b>1/2 Inch Tempered Bent Glass</b>						
North American Glass	Bensenville, IL		2053	COMPOSITE	200	U
<b><u>Safety Plastic Sheet</u></b>						
<b>.080 Inch Safety Plastic Sheet</b>						
Flex-O-Glass Inc.	Dixon, IL		118	ANSI ONLY	285	U
<b><u>Organic Coated Glass Hybrid</u></b>						
<b>1/8 Inch Organic Coated Glass Hybrid</b>						
Viracon Inc.	Owatonna, MN		1883	COMPOSITE	150	U
<b>3/16 Inch Organic Coated Glass Hybrid</b>						
Viracon Inc.	Owatonna, MN		1949	COMPOSITE	150	U
<b>1/4 Inch Organic Coated Glass Hybrid</b>						
Viracon Inc.	Owatonna, MN		1884	COMPOSITE	150	U
<b><u>Organic Coated Glass</u></b>						
<b>1/8 Inch Organic Coated Glass</b>						
Guardian Inds. Corp.	Reedley, CA		2117	CPSC ONLY	250	U
Poma Glass & Specialty Windows, Inc.	Girard, OH		2207	COMPOSITE	100	U
<b>5/32 Inch Organic Coated Glass</b>						
Guardian Inds. Canada Corp.	Rexdale, ON		1966	ANSI ONLY	400	U
<b><u>Laminated Transparent Glass</u></b>						
<b>1/2 Inch Laminated Transparent Glass</b>						
Guardian Inds. Corp.	Lewistown, PA		1316	ANSI ONLY	400	U
<b>1/8 Inch Laminated Transparent Glass</b>						
Jarrett, Inc.	East Palestine, OH		2118	COMPOSITE	400	U
<b>5/32 Inch Laminated Transparent Glass</b>						
Cardinal LG	Amery, WI		2166	COMPOSITE	150	U
Guardian Inds. Corp.	Lewistown, PA		1886	ANSI ONLY	400	U
<b>3/16 Inch Laminated Transparent Glass</b>						
Viracon Inc.	Owatonna, MN		1637	COMPOSITE	150	U
<b>3/16 Inch Laminated Transparent Glass</b>						
Jarrett, Inc.	East Palestine, OH		2119	COMPOSITE	400	U
<b>7/32 Inch Laminated Transparent Glass</b>						
Guardian Inds. Corp.	Lewistown, PA		1282	ANSI ONLY	400	U
Mirror Factory	Plymouth, MN		1915	COMPOSITE	150	U
<b>1/4 Inch Laminated Transparent Glass</b>						
American Glassmith/Sumiglass	Columbus, OH		2174	COMPOSITE	200	U
Architectural Safety Glass	Ft. Pierce		1914	COMPOSITE	400	U
Cardinal LG	Amery, WI		2169	COMPOSITE	150	U
Cardinal LG	Amery, WI		2167	COMPOSITE	150	U
Globe-Amerada Glass Co.	Selma, AL		1668	COMPOSITE	400	U
Guardian Inds. Corp.	Lewistown, PA		1946	ANSI ONLY	400	U
Jarrett, Inc.	East Palestine, OH		2120	COMPOSITE	400	U
Laminated Glass Corp.	Telford, PA		1652	COMPOSITE	275	U
Nashville Tempered Glass Corp.	Nashville, TN		2202	COMPOSITE	200	U
Prelco Inc.	Riviers-du-Loup, QC		2037	COMPOSITE	400	U
Prelco Inc.	Riviers-du-Loup, QC		2155	COMPOSITE	400	U
<b>3/8 Inch Laminated Transparent Glass</b>						
Guardian Inds. Corp.	Lewistown, PA		1947	ANSI ONLY	400	U

July 1, 1998

SGCC 47

*Certified Products - by Product Type*

		<u>SGCC #</u>		<u>Lab ID</u>	<u>Max Size Certified</u>
<i>1/2 Inch Laminated Transparent Glass</i>					
American Glassmith/Sumiglass	Columbus, OH	2175	COMPOSITE	200	U
<b><u>Laminated Specialty Product</u></b>					
<i>5/16 Inch Laminated Specialty Product</i>					
Viracon Inc.	Owatonna, MN	1950	COMPOSITE	150	U
<b><u>Laminated Patterned Glass</u></b>					
<i>5/16 Inch Laminated Patterned Glass</i>					
Cardinal LG	Amery, WI	2240	COMPOSITE	150	U



July 1, 1998

SGCC 48

ACI Distribution  
12900 Nicholson Rd.  
PO Box 815547  
Dallas, TX 75381-5547

All Team Glass & Mirror  
Ltd.  
281 Hanlon Rd.  
Woodbridge, ON L4L 3R7

Arch Aluminum & Glass  
7701 W. New York St.  
Indianapolis, IN 46214




**TEMPERED SAFETY GLASS**  
16CFR1201 CII  
ANSI Z97.1-1984 3/16"U  
SGCC 400

AFG Inds. Inc.-TN  
PO Box 929  
1400 Lincoln St.  
Kingsport, TN 37662

American Flat Glass Dist.  
1201 Highway 67E  
Alvarado, TX 76009

Architectural Safety Glas  
7337 Commercial Circle  
Ft. Pierce, FL 34951

  
**TEMPERED**  
16 CFR 1201-C II  
ANSI Z97.1 1984  
1/80 SGCC-1390  
AFG 006  
BS 5206 A

**AFGD**  
ANSI Z97.1-1984  
16CFR 1201-CII  
SGCC 1232 3/8" U

AFGD, Div. Of AFG Inds.  
Ltd.  
384 Exter Rd.  
London, ON N6E 2Z4

American  
Glassmith/Sumiglass  
195 Phillipi Rd.  
Columbus, OH 43228

Ardco Inc.  
12400 S. Laramie Ave.  
Chicago, IL 60658

**Ardco TemperBent**

ANSI Z97.1-1984  
16 CFR 1201-CII  
SGCC-1043 1/13U

AFGD, FPD  
75 Doney Crescent  
Concord, ON L4K 1P6

Anthony's Mfg. Inc.  
12812 Arroyo St  
San Fernando, CA 91342

Berkowitz, J.E.  
Delsea Dr. & Harvard Dr.  
Westville, NJ 08093



USA  
ANSI Z97.1 1984  
SGCC 520 1/8U

July 1, 1998

SGCC 49

Cardinal IG  
Iowa 25 N.  
PO Box 99  
Greenfield, IA 50849

Consolidated Glass Corp.  
1150 N. Cedar St.  
New Castle, PA 16103

D & W, Incorporated  
941 Oak Street  
Elkhart, IN 46514

**CRG #2 TEMPERED**  
**WCFR 1201 II**  
**DATE-INSD 3/16/01**

Coastal Glass Distributors  
P.O. Box 41087  
7421 E. Spartan Blvd.  
Charleston, SC 29423

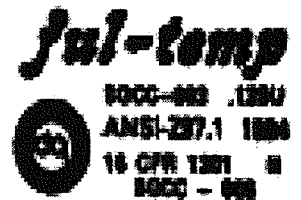
Contour Industries Inc.  
125 Industrial Drive  
Surgoinsville, TN 37873

Dong Sung Glass Co.  
120BL-9LT,NAMDONG-KONG  
8 GOJAN-DONG,NAM  
DONG-GU  
Inchon, 405-310

Colonial Mirror & Glass  
Corp.  
35 Kent Ave.  
Brooklyn, NY 11232

Coraglass Inc.  
Hwy 17 South  
Reform, AL 35481

Downey Glass Co.  
5631 Ferguson Dr.  
Los Angeles, CA 90022



Commercial Insulating  
Glass Co.  
1155 Porter Rd.  
Sarasota, FL 34240

D & S Tempered Glass  
2533 Royal Ln. Ste. 525  
Dallas, TX 75229

Edge Seal Technologies  
7850 Northfield Rd.  
Walton Hills, OH 44146

July 1, 1998

SGCC 50

Efco Corp.  
1000 County Rd.  
PO Box 609  
Monett, MO 65708

Free State Glass Inds.  
5415 Lee Highway  
Warrenton, VA 20187

Glass Distributors of  
America  
2310 Sweetwater Ind. Blvd.  
Lithia Springs, GA 30057-2882

**FREE STATE GLASS**  
**TEMPERED SAFETY GLASS**  
ANSI Z97.1-1984 16 CFR 1201-I & II  
SGCC 1002 1/4" U

Flex-O-Glass Inc.  
4647 W. Augusta Blvd.  
Chicago, IL 60651

Gardner Mirror  
Corporation  
600 Elkin Hwy.  
North Wilkesboro, NC 28659-1570

Glass, Inc.  
4005 S. Clay St.  
Englewood, CO 80110

*Waipā*  
**FLEX-O-GLAZE™**  
**ACRYLIC SAFETY GLAZING**  
16 CFR 1201 CII 100U  
ANSI Z97.1-84 SGCC-118

Floral Glass & Mirror  
895 Motor Pkwy.  
Hauppauge, NY 11788

Gemtron-Sweetwater  
615 Hwy. 68  
Sweetwater, TN 37874

Globe-Amerada Glass  
Co. (Assurance)  
2001 Greenleaf Ave.  
Elk Grove Village, IL 60007

**TemPLUS**  
**FLORAL GLASS & MIRROR**  
**TEMPERED SAFETY GLASS**  
ANSI Z97.1-1984  
16 CFR 1201-I-II  
SGCC-1000 7/32 U

**TEMPERED**  
**16 CFR 1201 CII**  
**ANSI Z97.1-1984**  
**1/4" U • SGCC-1201/1202**  
**GEMTRON 57 1000**

**LAMINATED SAFETY GLASS**  
SGCC-1668 .218 U  
ANSI Z97.1-1984  
16 CFR 1201 C II  
AS 90

Four Seasons Solar  
Products  
5005 Veterans Memorial Hwy.  
Holbrook, NY 11741

GGI Glass Distributors  
Corp.  
5012 Expressway Dr. S.  
Ronkonkoma, NY 11779

Guardian Fabrication Inc.  
1412 S. First St.  
Rogers, AR 72756

**FOUR SEASONS**  
**TEMPERED**  
**SAFETY GLASS**  
16 CFR 1201-C II  
ANSI Z97.1-1984  
SGCC-1195/1200

**GUARDIAN**  
**ROGERS, AR.**  
**TEMPERED**  
**ANSI Z97.1-1984**  
**SGCC 1010 5/32U**  
-----  
**16 CFR 1201 II**

July 1, 1998

SGCC 51

Guardian Inds. Canada  
Corp.  
355 Attwell Drive  
Rexdale, ON M9W 5C2

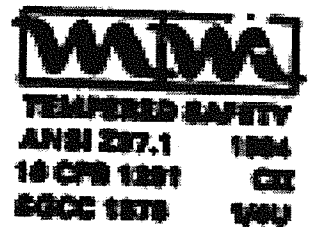
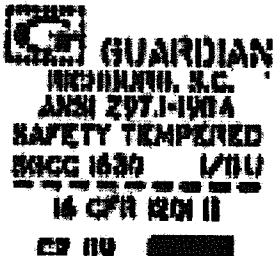
Interpane Glass  
Company  
520 E Railroad St  
PO Box 408  
Clinton, NC 28328

Mid Ohio Tempering  
5150 Walcutt Court  
Columbus, OH 43228

Guardian Inds. Corp.  
Carolina Dist. Pk.  
S. Hwy. 9  
Richburg, SC 29729

Jarrett, Inc.  
217 East Clark Street  
East Palestine, OH 44413

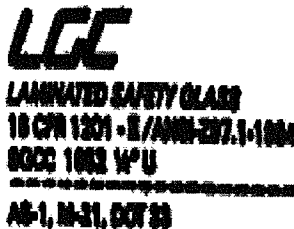
Milgard Tempering Inc.  
1010 54th Ave. E.  
PO Box 11368  
Tacoma, WA 98411-0368



Guardian Walled Lake  
Fab.  
3160 Ridgeway Court  
Walled Lake, MI 48390

Laminated Glass Corp.  
375 E. Church Ave.  
PO Box 1003  
Telford, PA 18969-1003

Mirror Factory  
12725 16th Ave. N.  
Plymouth, MN 55441



Hoffer's Inc.  
Glass Fabrication Div.  
5103 Janice Ave.  
Schofield, WI 54476

Marvin Windows  
PO Box 100  
Hwy. 11 W.  
Warroad, MN 56763

Nashville Tempered  
Glass Corp.  
1860 Air Lane Dr.  
Nashville, TN 37210

**H-I-T**  
TEMPERED GLASS  
ANSI Z97.1-1984  
16CFR 1201 CII  
SGCC 1595 1/8

**NtGc**  
ANSI Z97.1-1984  
16 CFR 1201 CII  
SGCC 1416 1/8 U  
DOT 359 AS 2

July 1, 1998

SGCC 52

North American Glass  
1001 Foster Ave.  
Bensenville, IL 60106

PPG Inds. Inc.  
3700 Division St.  
Burlington, IA 52601

Shaw Glass Co.  
55 Bristol Dr.  
S. Easton, MA 02375

**PPG Herculite N**  
TEMPERED SAFETY GLASS  
1/4" (1201) CR  
ANSI Z-87.1-1984 1/4U  
SGCC-302 4 922606

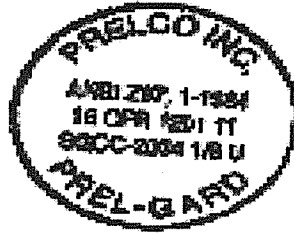
**SOLAR TEMP.**  
**16 CFR 1201 11**

**ANSI Z 87.1-1984**  
**1/4 U SGCC 1035**

Patio Enclosures Inc.  
720 East Highland Rd.  
Macedonia, OH 44056

Prelco Inc.  
94 Boulevard Cartier  
Riviers-du-Loup, QC G5R 2M9

Sovis North America, Inc.  
1101 Sovis Road  
Madison, GA 30650



Perilstein Distribution  
Corp.  
100 Business Center Dr.  
Cheswick, PA 15024

S & S Glass Specialties  
Inc.  
1051 N. Ottokee Street  
Wauseon, OH 43567

Specialty Building  
Products  
400 Ewen Ave.  
New Westminster, BC V3M 5B

Poma Glass & Specialty  
Windows, Inc.  
160 Trumbull Ave  
Girard, OH 44420

SAFTI c/o O'Keeffe's  
c/o O'Keeffe's Inc.  
75 Williams Avenue  
San Francisco, CA 94124

Sterling Plumbing Group  
2000 N. 5th St.  
Industrial Park  
Union City, TN 38261

July 1, 1998

SGCC 53

Summit Window & Patio  
Door  
1015 E. Lincoln Ave.  
Yakima, WA 98901

Tecnoglass  
Avenida Circunvalar a 100 mts.  
de l a Via 40  
Las Flores, Barranquilla

Traco (Three Rivers  
Alum)  
71 Progress Ave.  
Cranberry Township, PA 1606



**TRACO VIEW-SAFE  
TEMPERED GLASS**  
ANSI Z97.1-1984  
16 CFR 1201.11  
SGCC-100 1/2U

Sunbelt Glass Inc.  
8531 E. 44th St.  
Tulsa, OK 74145

Tempered Glass Inc.  
7160 Delta Circle  
Austell, GA 30001

US Precision Glass  
1900 Holmes Rd.  
Elgin, IL 60123

**BUNTEMP 1-87**  
**SAFETY TEMPERED**  
**ANSI Z97.1-1984**  
**16 CFR 1201.11**  
**SGCC-1453 1/8 U**

**• Tuf-Tex Glass FT 1/2" U 1 •**  
**• TEMPERED SAFETY GLASS •**  
**ANSI Z97.1-1984 16 CFR 1201.11**  
**• SGCC-121 SGCC-163 •**

Swift Glass Co., Inc.  
131 W. 22nd St.  
Elmira Heights, NY 14903

Tempglass Group Inc.  
Ampoint  
291 M St.  
Perrysburg, OH 43551

Viracon Inc.  
800 Park Dr.  
PO Box 248  
Owatonna, MN 55060

**VIRACON**  
**TEMPERED**  
**16 CFR 1201.11**  
**SGCC 1453 1/8 U**  
**ANSI Z97.1-1984**  
**1 88**

Taylor Made Glass Ohio  
Inc.  
316 N. Laura Ave.  
PO Box 77  
Payne, OH 45880

Tempglass Group Inc.  
17851 N.W. Miami Ct.  
Miami, FL 33169

Virginia Glass Products  
Corp.  
PO Box 5431  
Martinsville, VA 24115

**TEMPGLASS, INC.**  
**16 CFR 1201.11**  
**ANSI Z97.1 - 1984**  
**SGCC 1420**  
**1/4 - U (1)**

**VIRGINIA GLASS**  
**ANSI**  
**Z97.1-1984**  
**SGCC-11**  
**16 CFR 1201-11**  
**1/4-11**  
**TEMPERED**  
**PRODUCTS**

July 1, 1998

SGCC 54

Vitrierie April Inc.  
12645 Rue April  
Montreal, QC H1B 5P6

Westshore Glass  
5300 W. Knox St.  
PO Box 15216  
Tampa, FL 33684-5216



ANSI Z97.1-1984  
16 CFR 1201 CII  
WGC TEMPERED  
SGCC 1973 1/4U

Additional SGCC Certified Products Directories are available from the SGCC office for \$3.00/copy. A check or money order must accompany each order and be made payable to "SGCC".

\*\*\*\*\*

SGCC DIRECTORY ORDER FORM

PLEASE SEND . . . \_\_\_\_\_ copies of SGCC Certified Products Directory at \$3.00/copy = \_\_\_\_\_ to:

Name: \_\_\_\_\_

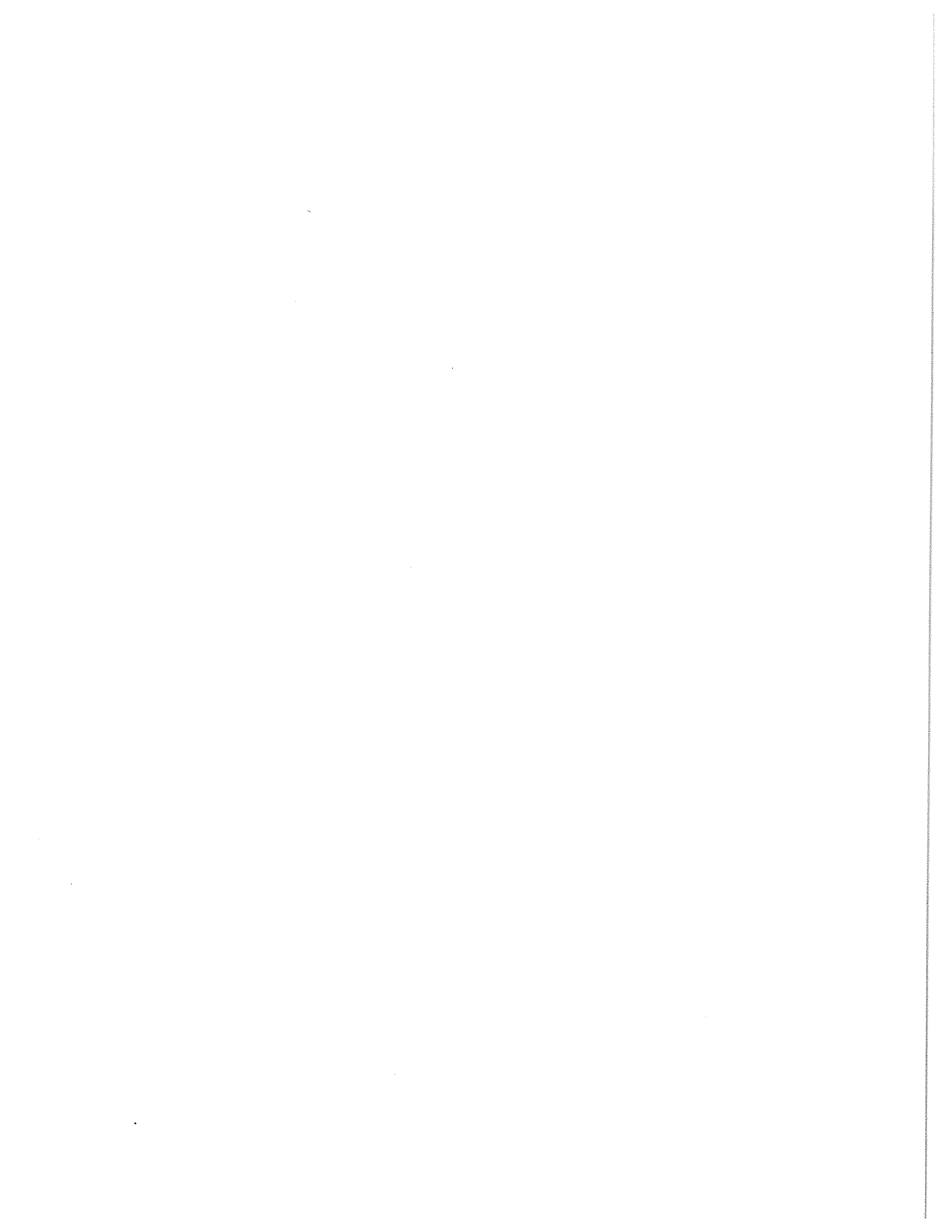
Company: \_\_\_\_\_

Address: \_\_\_\_\_

Address: \_\_\_\_\_

City,St. Zip: \_\_\_\_\_







SGCC APPROVED TESTING LABORATORIES  
APPROVED FOR TESTING IN THE ANSI AND CPSC  
CERTIFICATION PROGRAMS

- |     |  |     |   |
|-----|--|-----|---|
| 150 | Architectural Testing Inc.<br>587 First St SW<br>New Brighton MN 55112<br>Attn: Mr. Daniel P Braun<br>Telephone: 612-636-3835<br>Telefax: 612-636-3843                                 | 400 | ITS/ETL Testing Laboratories Inc.<br>3933 US Route 11<br>Cortland NY 13045-0950<br>Attn: Mr. Randy Hill<br>Telephone: 607-753-6711<br>Telefax: 607-756-9894             |
| 100 | Architectural Testing Inc.<br>130 Derry Ct<br>York PA 17402-9405<br>Attn: Mr. David Moyer<br>Telephone: 717-764-7700<br>Telefax: 717-764-4129  | 500 | Maxim Technologies/Des Moines<br>3922 Delaware Ave<br>Des Moines IA 50313<br>Attn: Mr. Carl C Andreasen S E T<br>Telephone: 515-266-5101<br>Telefax: 515-262-1910       |
| 200 | Bowser-Morner Inc.<br>4518 Taylorsville Rd<br>Dayton OH 45424<br>Attn: Mr. Tom Peters<br>Telephone: 937-236-8805<br>Telefax: 937-237-9947  | 550 | Maxim Technologies/Ft. Worth<br>2200 Gravel Dr<br>Ft Worth TX 76118-7123<br>Attn: Mr. Jack Gary<br>Telephone: 817-284-7755<br>Telefax: 817-589-1420                     |
| 250 | Construction Consulting Laboratory Inc.<br>Western Division<br>4751 W State St Ste E<br>Ontario CA 91762<br>Attn: Mr. Jack Jackson<br>Telephone: 909-591-1789<br>Telefax: 909-627-9020 | 750 | Performance Testing Inc.<br>4076-148th Ave N E<br>Redmond WA 98052<br>Attn: Mr Jon DeRose<br>Telephone: 206-883-9788<br>Telefax: 206-869-5266                           |
| 275 | ETC Laboratories<br>40 Ajax Road<br>Rochester NY 14624<br>Attn: Mr. Bryant Dunham<br>Telephone: 716-328-7668<br>Telefax: 716-328-7777  | 950 | ITS/Warnock Hersey International Inc.<br>530 Garcia Ave<br>Pittsburg CA 94565<br>Attn: Mr. Vijay G Ruikar, P E<br>Telephone: 510-432-7344<br>Telefax: 510-432-3576      |
| 300 | ITS/ETL Testing Laboratories Inc<br>4317-A Park Dr N W<br>Norcross GA 30093<br>Attn: Mr. William Penuel<br>Telephone: 770-925-2444<br>Telefax: 770-925-7294                            | 975 | ITS/Warnock Hersey International Inc.<br>8431 Murphy Dr<br>PO Box 735<br>Middleton WI 53562<br>Attn: Mr. Rocco Moro<br>Telephone: 608-836-4400<br>Telefax: 608-831-9279 |
| 285 | Fenestration Testing Laboratory Inc.<br>1677 West 31 <sup>st</sup> Place<br>Hialeah, FL 33012<br>Attn: Ms. Leigh Sanchez<br>Telephone: 305-819-7877<br>Telfax: 305-819-7998            | 125 | ATI Fresno<br>2524 East Jensen Avenue<br>Fresno, CA 93708<br>Attn: Mr. Don Empey<br>Telephone: 209-233-8705<br>Telefax: 209-233-8360                                    |

NOTE: The ID of the laboratory used for testing of each product is provided in the Certified Products - by Product Type section of this directory.



safety glazing certification council

P. O. Box 9  
Henderson Harbor, NY 13651

ADDRESS CORRECTION REQUESTED

BULK RATE  
U.S. POSTAGE  
PAID  
PERMIT NO. 281  
HAZLETON, PA